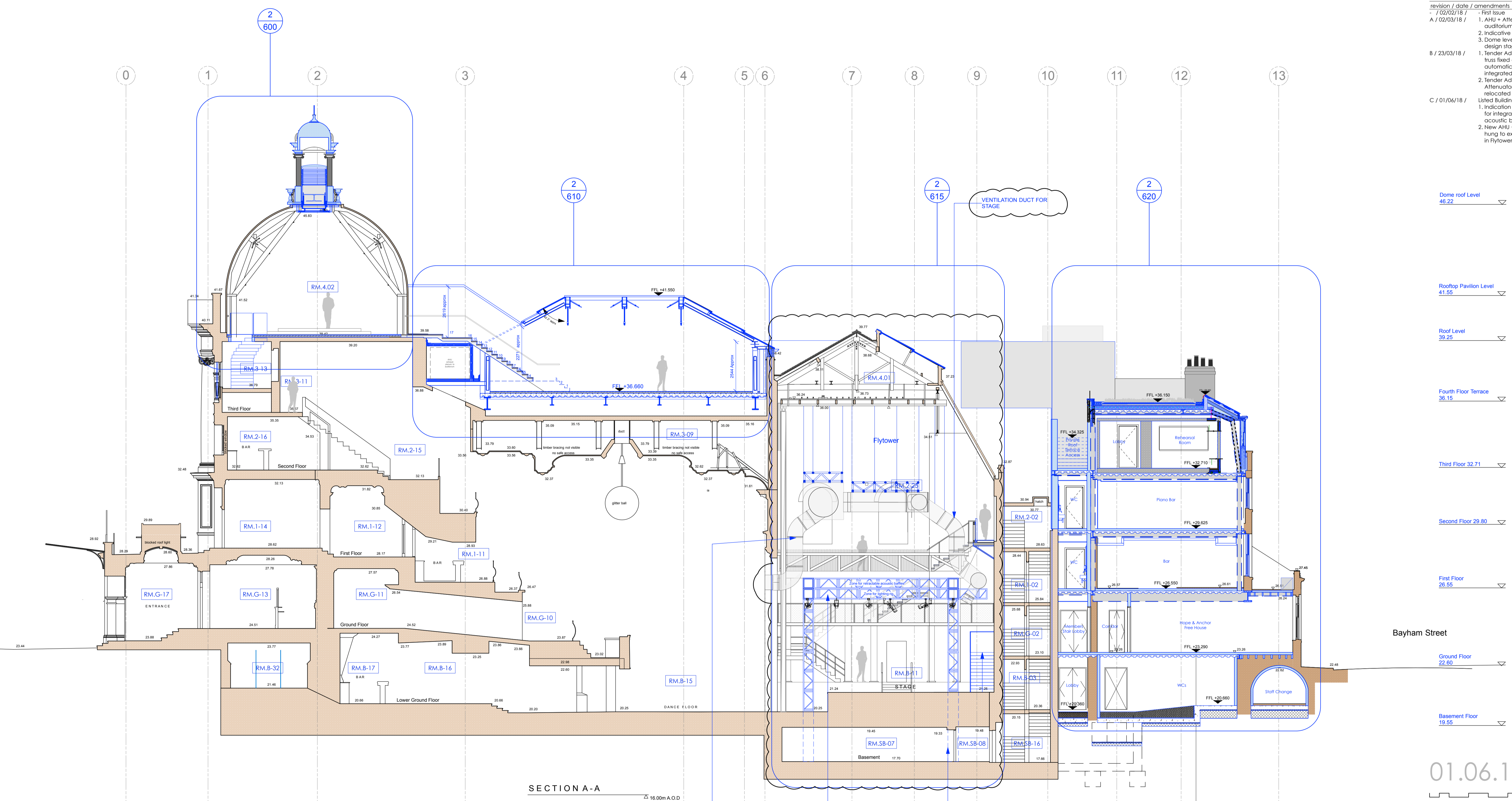


revision / date / amendments	First Issue
- / 02/02/18 /	1. AHU + Attenuator for KOKO stage and auditorium shown indicatively.
A / 02/03/18 /	2. Indicative rigging/ space frame shown 3. Dome levels updated to align with interior design stage 3 layout.
B / 23/03/18 /	1. Tender Addendum (1). Indication of 4 post truss fixed at stage level for integrated automatic retractable acoustic baffles and integrated lighting rig.
C / 01/06/18 /	2. Tender Addendum (2). New AHU + Attenuator over stage to be hung to existing relocated secondary beams in Flytower. Listed Building Application 1. Indication of 4 post truss fixed at stage level for integrated automatic retractable acoustic baffles and integrated lighting rig. 2. New AHU + Attenuator over stage to be hung to existing relocated secondary beams in Flytower.



Dome roof Level	46.22
Rooftop Pavilion Level	41.55
Roof Level	39.25
Fourth Floor Terrace	36.15
Third Floor	32.71
Second Floor	29.80
First Floor	26.55
Ground Floor	22.60
Basement Floor	19.55

SECTION A-A
16.00m A.O.D.

NEW AHU + ATTENUATOR OVER STAGE SUPPLYING VENTILATION TO STAGE AND TO AUDITORIUM. MEP UNITS TO BE FIXED TO SPACE FRAME AND HUNG TO FLYTOWER USING EXISTING RELOCATED SECONDARY STEEL BEAMS. REFER TO STRUCTURAL ENGINEER'S DETAILS, FLYTOWER TIMBER REPORT BY SPECIALIST AND DETAILS FROM EXTREME RIGGING.

NB: ATTENUATOR AND MEP EQUIPMENT WILL HANG ABOVE NEW 4 POST TRUSS. REFER TO AHA DRAWING AHA/KKC/DET/1615 AND AHA/KKC/PR/303

NEW 4 POST TRUSS FRAME WITH INTEGRATED RETRACTABLE ACOUSTIC BAFFLES (AT TOP LEVEL) AND INTEGRATED LIGHTING RIG (AT SECOND LEVEL). REFER TO TECHNICAL DETAILS FROM EXTREME RIGGING. PROPOSAL TO RE-USE EXISTING LIGHTING TRUSS/RIG. REFER TO SE DETAILS FOR FOOTING DETAILS.

PROPOSED 4NO BRICK PIERS TO SUPPORT 4 POST TRUSS FRAME. REFER TO SE DETAILS FOR BRICK PIERS AND FOOTING DETAILS.

01.06.18
0 1 2 3 4 5 8m

STAGE 4
Archer Humphries Architects
Basement
Central House
142 Central Street
London, United Kingdom
EC1V 8AR
T: +44 (0) 20 7251 8555

project title	KOKO + Hope & Anchor + Bayham Place Camden, London		
drawing title	scale	date	
Proposed Section AA	1:100 @ A1	18.05.17	
drawing number	drawn	checked	
AHA/KKC / PR / 300	EH/FR	FR/PC	
	revision		
	C		