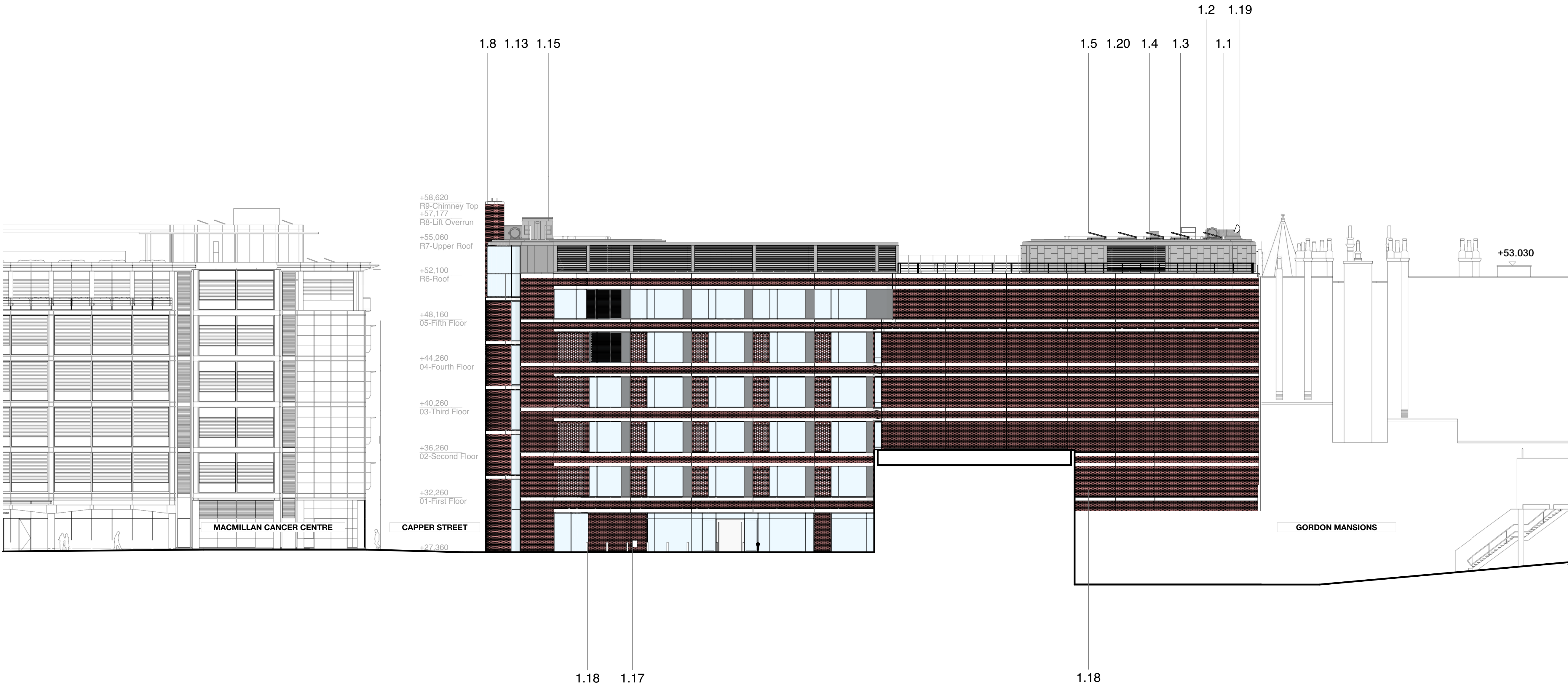


BMJ Architects makes no representation or warranties, express or implied, with respect to the use of the data provided hereunder, regardless of its format or the means of its transmission. There is no guarantee or representation to the user as to the accuracy, currency, suitability or reliability of the data for any purpose. The user accepts the data "as is", and assumes all risks associated with its use. By acceptance of this data, the user agrees not to transmit this data or provide access or any part of it to another party unless the user shall include with the data a copy of this disclaimer. BMJ assumes no responsibility for actual or consequential damage incurred as a result of any user's reliance on this data.

THIS DRAWING IS STILL IN DEVELOPMENT WITH ONGOING CO-ORDINATION REQUIRED. This drawing and any associated 3D models should not be used for Construction until full "Construction" status is applied by BMJ. The current "Construction" status of this drawing is applied only for the Client and Main Contractor procurement process and is the default status following CMT sign off.

- 1.1 - Lift overrun removed
- 1.2 - South Core smoke depressurisation duct reconfigured
- 1.3 - Guardrail added to access hatch for improved safe access
- 1.4 - Toilet extract flue added
- 1.5 - Position of PVs reconfigured and profile lowered
- 1.6 - Removal of access door through glass balustrade
- 1.7 - Addition of housing for North Core smoke depressurisation duct
- 1.8 - Chimney flues added
- 1.9 - Escape door changed to flat metal panel doors to provide thermal performance
- 1.10 - Door arrangement to meet UKPN requirements
- 1.11 - Sheffield Hoop bike stands added
- 1.12 - Mullions added due to glass panel size restrictions
- 1.13 - North Core smoke depressurisation duct reconfigured
- 1.14 - Roller shutter amended with open grill sections to provide required fresh air flow
- 1.15 - Minor amendments to access ladders
- 1.16 - Bollards added to protect pavement grill
- 1.17 - Dry Riser moved
- 1.18 - Configuration of panel joints amended for buildability
- 1.19 - Satellite dish & aerial added
- 1.20 - Louvre increased to provide required air flow



P02 Galvanized trim omitted from bottom of lift 4 overrun GP MH HG 05/02/2019

P02 Changes incorporated as per CMT comments GP MH HG 23/01/2019

01 Drawings issued for MMA approval GP MH HG 12/11/2018

| Rev | Description | Dm | Chk | Apr | Date |
|-----|-------------|----|-----|-----|------|
|-----|-------------|----|-----|-----|------|

**bmj architects**

London / Glasgow / Aberdeen  
Boswell Mitchell & Johnston  
23-24 Easton Street  
London, WC1X 0DS

+44 141 271 3200  
london@bmjarchitects.co.uk  
www.bmjarchitects.co.uk

Client

Mace



Project

UCLH

Phase 5 ENT Treatment Centre

Document Title

Planning MMA Shropshire Place Elevation

Scale(s) @ A1 1:200

BMJ Project Ref: [3433]

File Name

Project Originator Vol. Level Type Role Number  
P5 - BMJ-001-XX-DR-A- 2192

Status Code Suitable for

- -

Revision Code Issued for

P03

© Boswell Mitchell & Johnston Ltd.