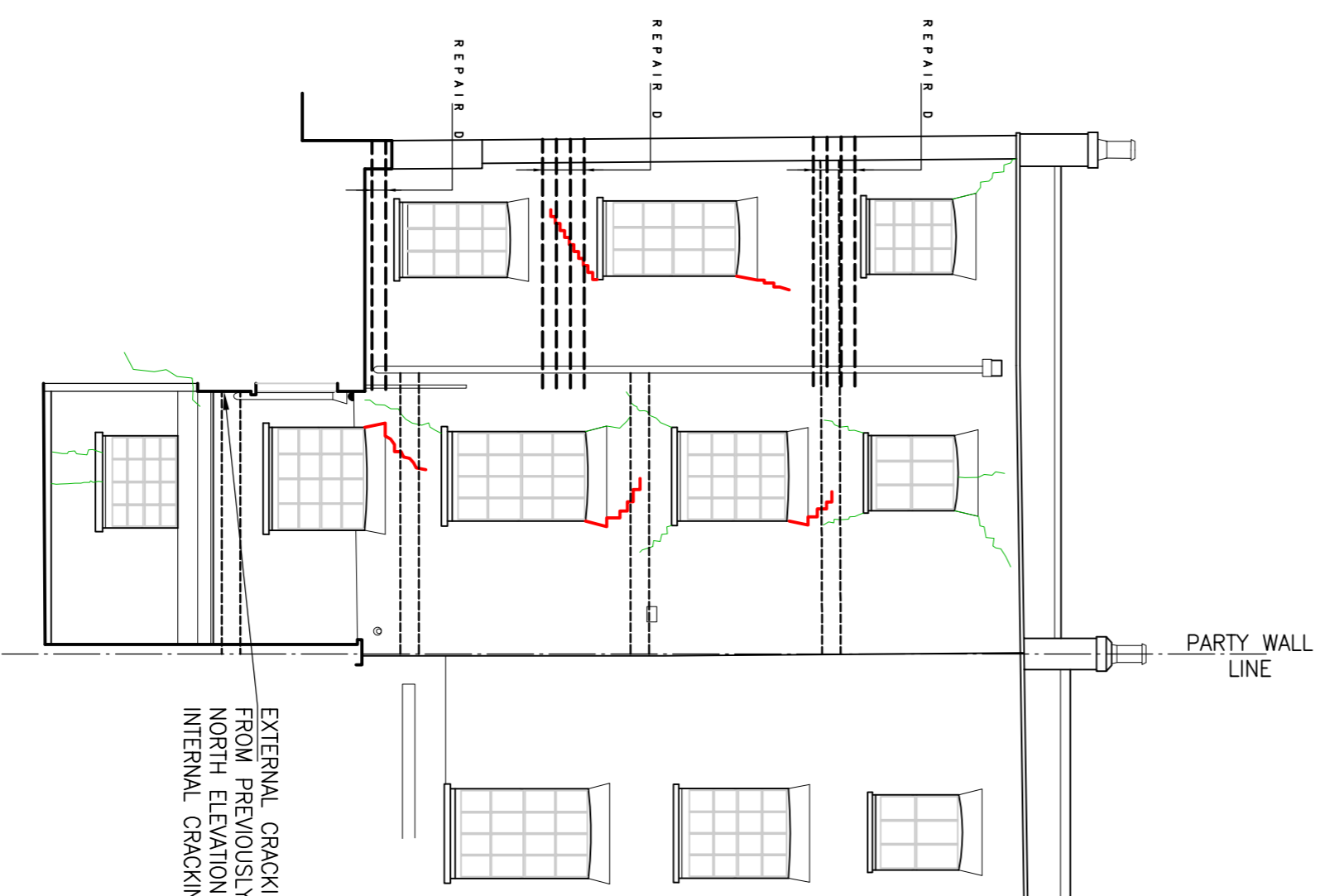
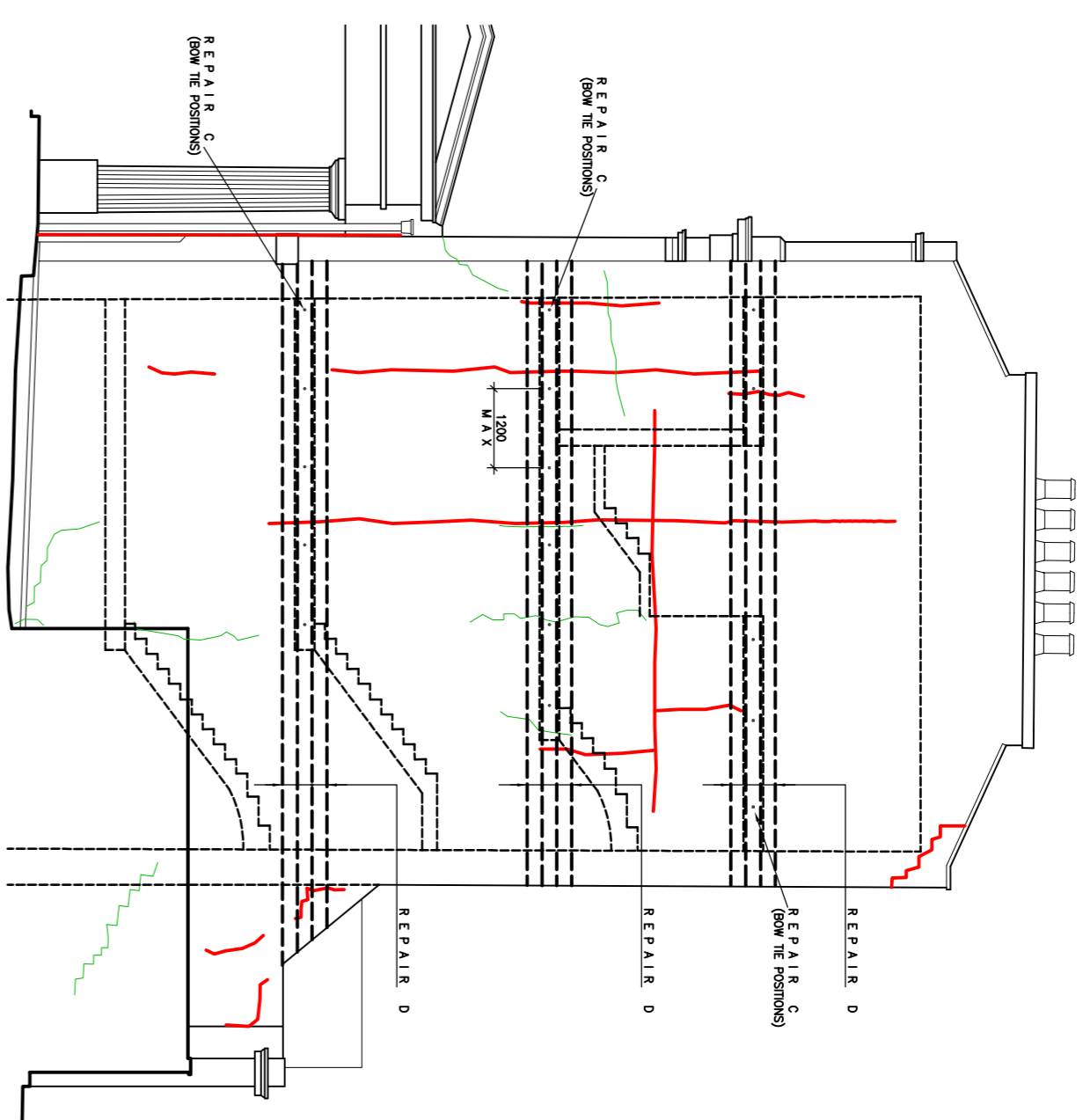


ELEVATION 1-1
SCALE 1:100

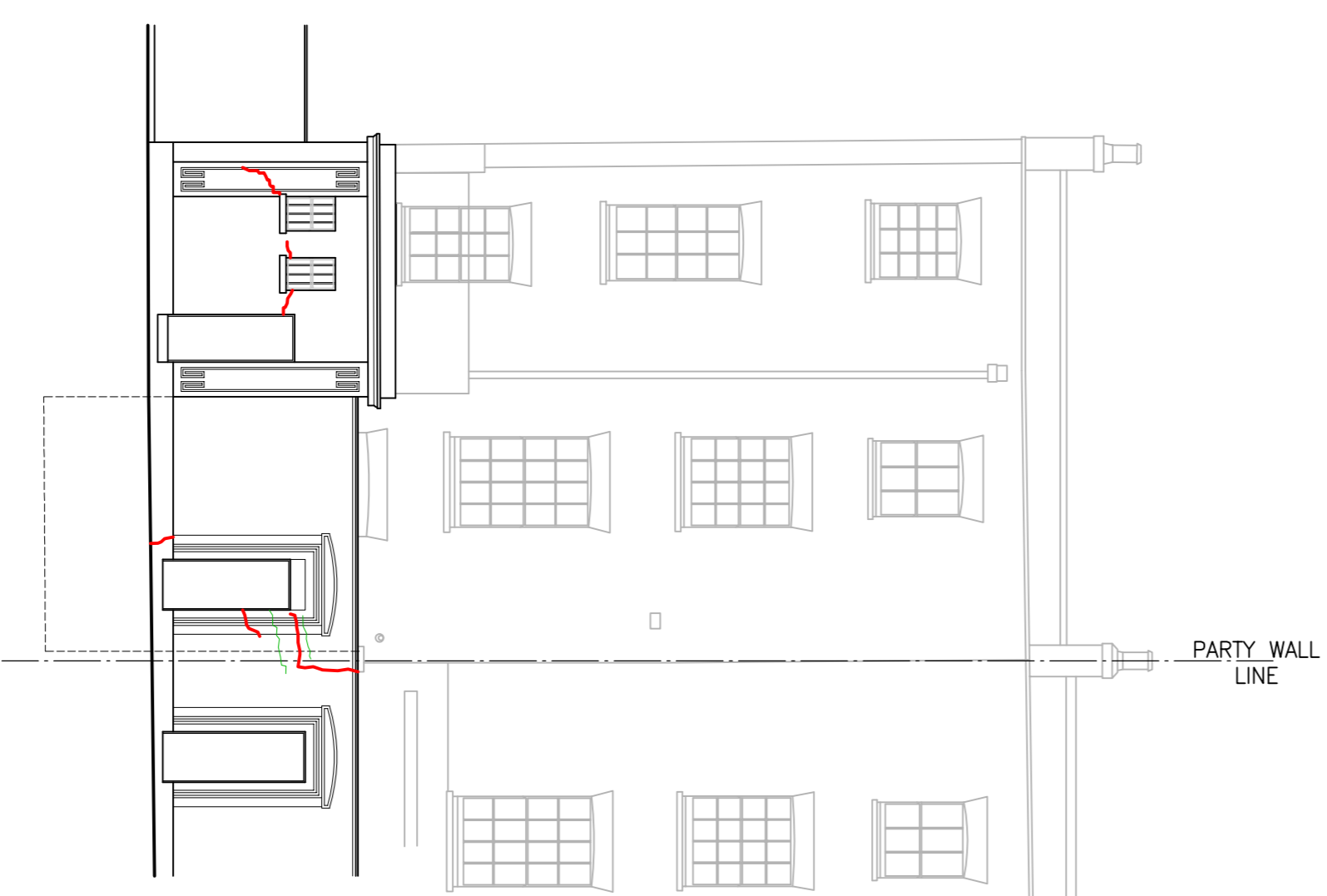


ELEVATION 3-3
SCALE 1:100

KEY TO CRACKING
 — EVIDENCE OF EXTERNAL CRACKING
 — EVIDENCE OF INTERNAL CRACKING



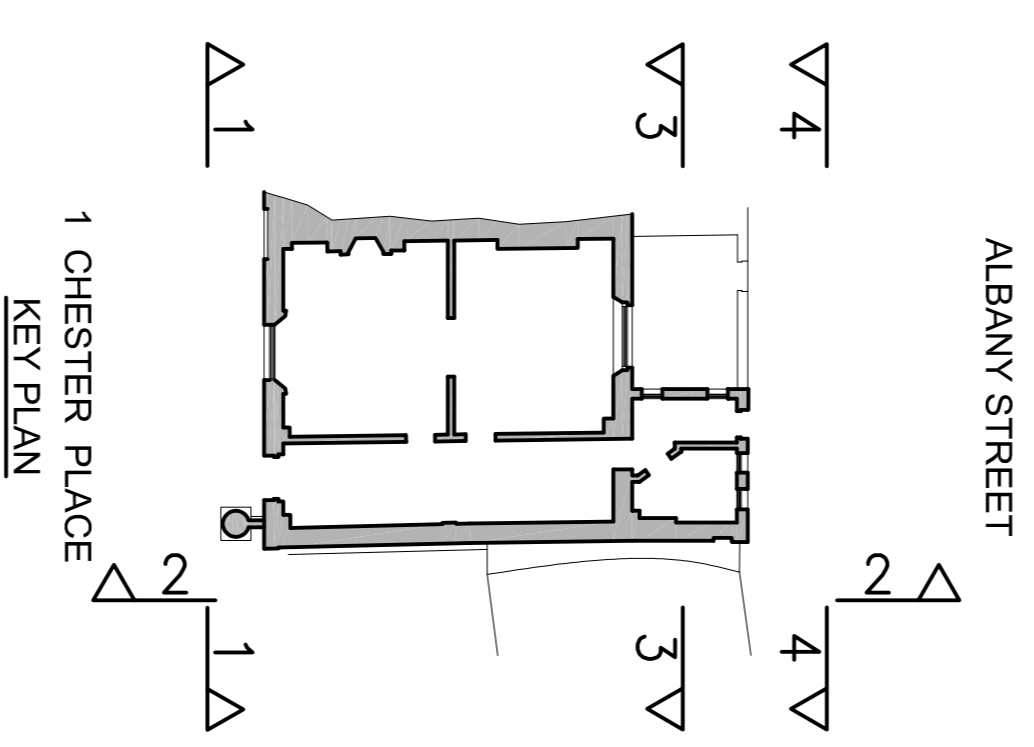
ELEVATION 2-2
SCALE 1:100



ELEVATION 4-4
SCALE 1:100

REPAIR SCHEDULE

- Repair A
Hack off plaster to full length of crack. Replace any cracked bricks using NHL 3:5 mortar in 1:2½ mix. Install helibor every third course of brick in accordance with manufacturers details and specifications. Make good plaster and finishes for completion.
- Repair B
Repair as schedule A but with external stucco/render. Make good stucco/render and decorate on completion.
- Repair C
Install helifix bowties and bowtie HD's to floor, including nogging, fully in accordance with manufacturers instructions at approx 1200mm centres.
- Repair D
Form helibeam bar bands from 4 no. bars in 50mm stainless steel at 225mm vertical centres fully in accordance with manufacturers instructions at each floor plate.
- Repair E
Strip back plaster and finishes. Fix existing timber stud back to flank wall with resin bolts – see details.
- Repair F
Hack off plaster for brickwork inspection. Allow for partial rebuild/making good of masonry and possible additional helibor to two faces as per repair A



1 CHESTER PLACE
KEY PLAN

REV	DATE	ISSUED FOR TENDER	DETAILS	JSP	DALP
-	27.03.2019	ISSUED FOR TENDER	DETAILS	JSP	DALP
				DRAWN	CHECKED

structurehaus
 consulting · engineering · designing
 LONDON OFFICE 020 8840 7810
 EXETER OFFICE 01392 363497
 info@structurehaus.com
 www.structurehaus.com

1 CHESTER PLACE
 REGENTS PARK
 LONDON NW1 4NB

REPAIR DETAILS TO
 ELEVATIONS

1:100 @ A1

DRAWING NUMBER
 02962L/06

Drawn by JSP
 Date 26.02.2019

Checked by DALP
 Date 28.02.2019

FOR TENDER