



PHOTO 56



PHOTO 50



PHOTO 54



PHOTO 55



CRACKING OVER WINDOW FRONT ELEVATION REPAIR B
PHOTO 53



SLIGHT CRACKING ABOVE AND BELOW WINDOW REPAIR A
PHOTO 52

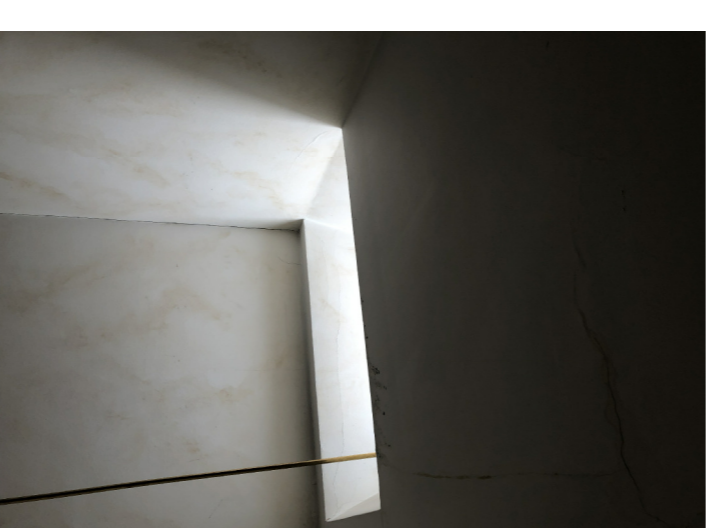
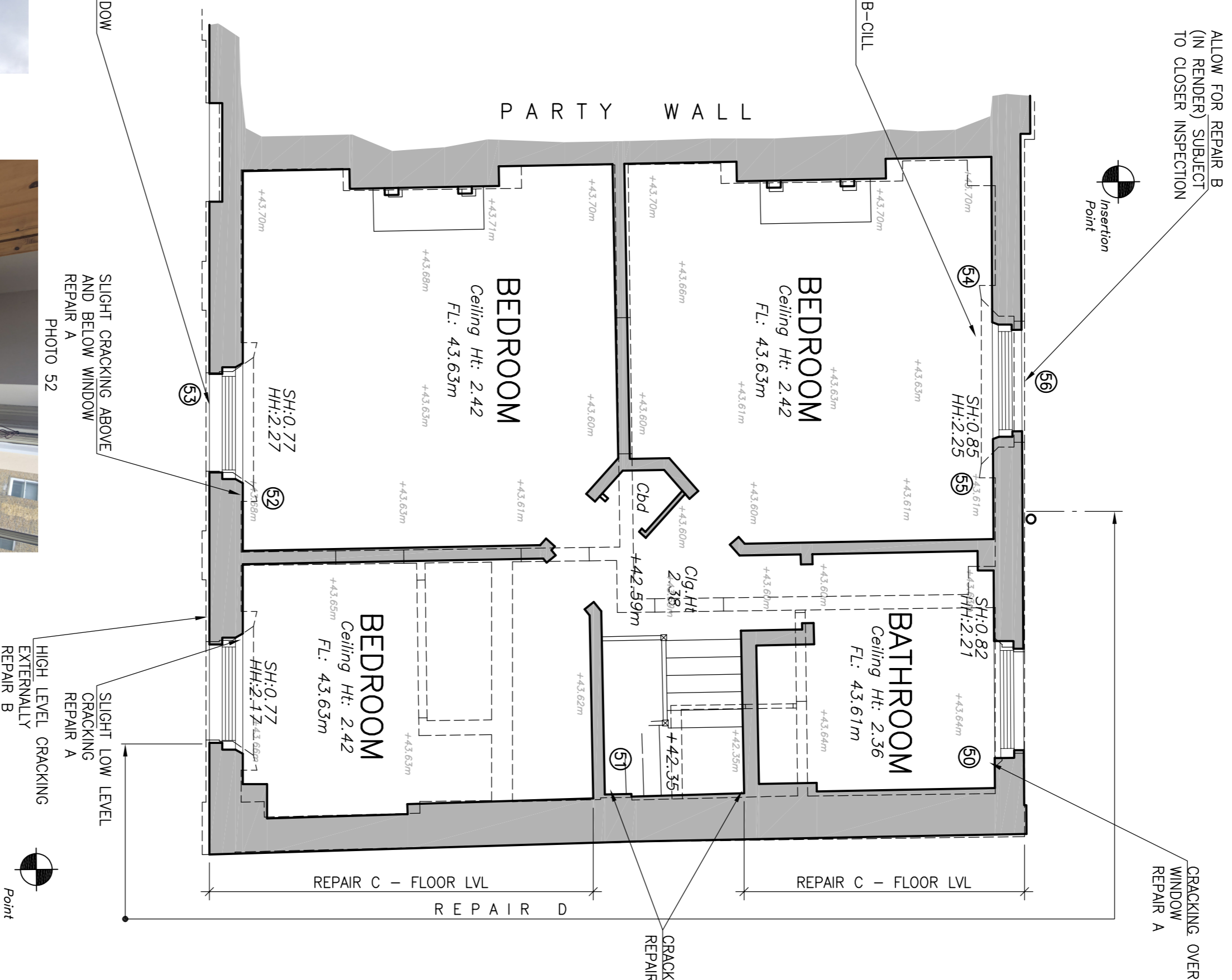
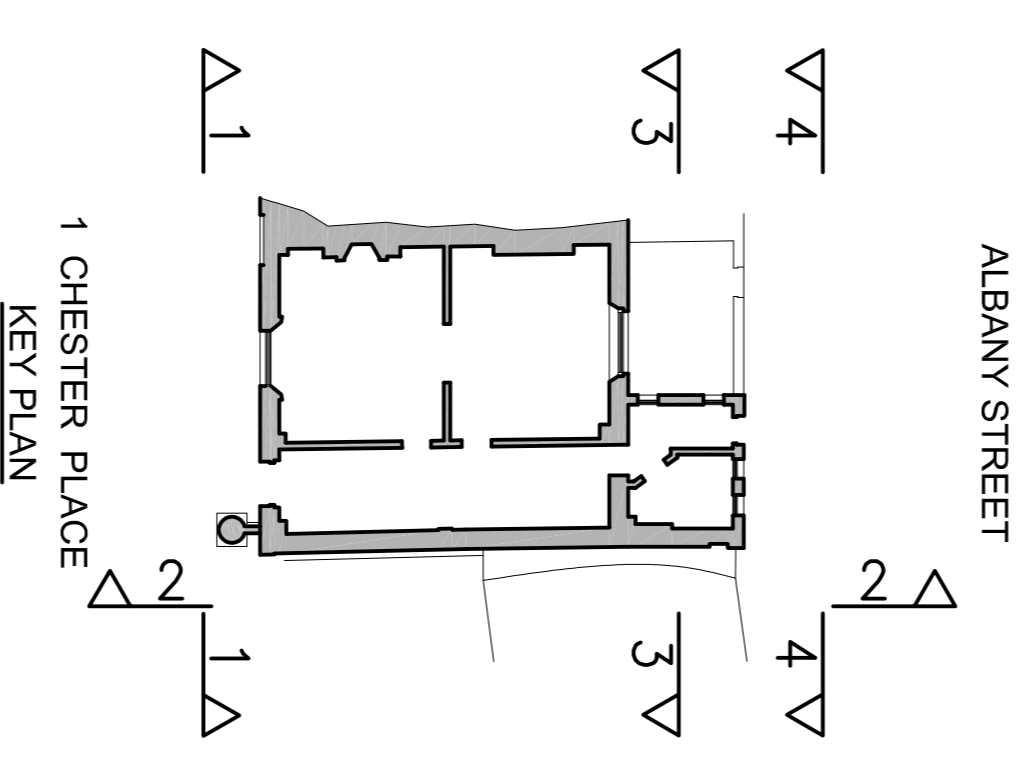


PHOTO 51



REPAIR SCHEDULE	
Repair A	Hack off plaster to full length of crack. Replace any cracked bricks using NHL 3:5 mortar in 1:2½ mix. Install hallow every third course of brick in accordance with manufacturers details and instructions. Make good plaster and finishes for completion.
Repair B	Repair as schedule A but with external stucco/render. Make good stucco/render and decorate on completion.
Repair C	Install helifix bowties and bowtie HD's to floor, including noggin, fully in accordance with manufacturers instructions at approx 1200mm centres.
Repair D	Form heliobeam bar bonds from 4 no. bars in 5mm stainless steel at 225mm vertical centres fully in accordance with manufacturers instructions of each floor plate.
Repair E	Strip back plaster and finishes. Fix existing timber stud back to flank wall with resin bolts – see details.
Repair F	Hack off plaster for brickwork inspection. Allow for partial rebuild/making good of masonry and possible additional hallow to two faces as per repair A

EXISTING THIRD FLOOR PLAN
SCALE 1:50

FOR TENDER

REV	DATE	ISSUED FOR TENDER	DETAILS	JSP	DALP
-	27.03.2019	ISSUED FOR TENDER	DETAILS	JSP	DALP
consulting · engineering · designing LONDON OFFICE 020 8940 7810 EXETER OFFICE 01392 363497 info@structurehaus.com www.structurehaus.com					
1 CHESTER PLACE REGENTS PARK LONDON NW1 4NB					
REPAIR DETAILS TO THIRD FLOOR					
1:50 @ A1					
DRAWING NUMBER	02962L/05				REVISION
Drawn by	JSP	Checked by	DALP	Date	28.02.2019
Date	26.02.2019	Date	28.02.2019		