



PHOTO 29



PHOTO 20



PHOTO 21



PHOTO 22

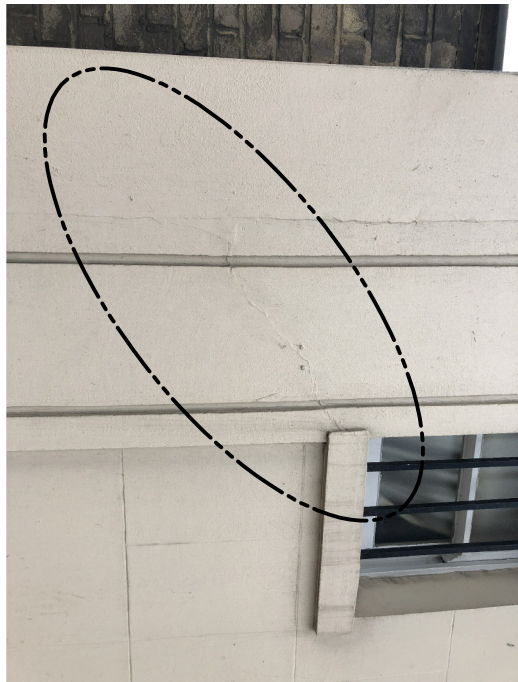


PHOTO 23



PHOTO 24



PHOTO 28



PHOTO 25



PHOTO 26

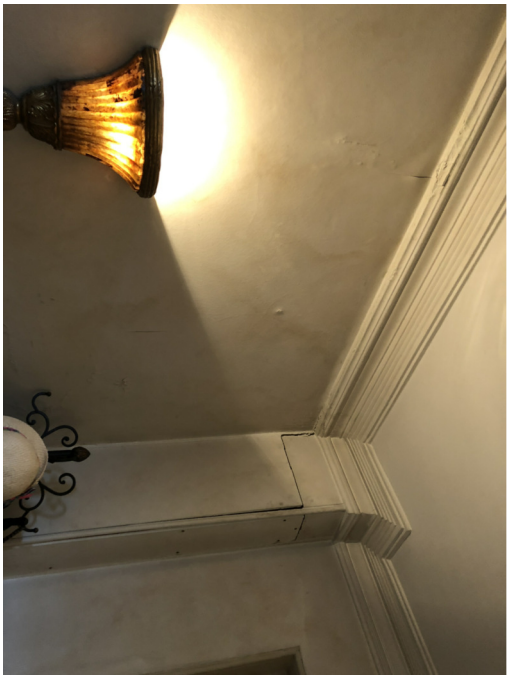
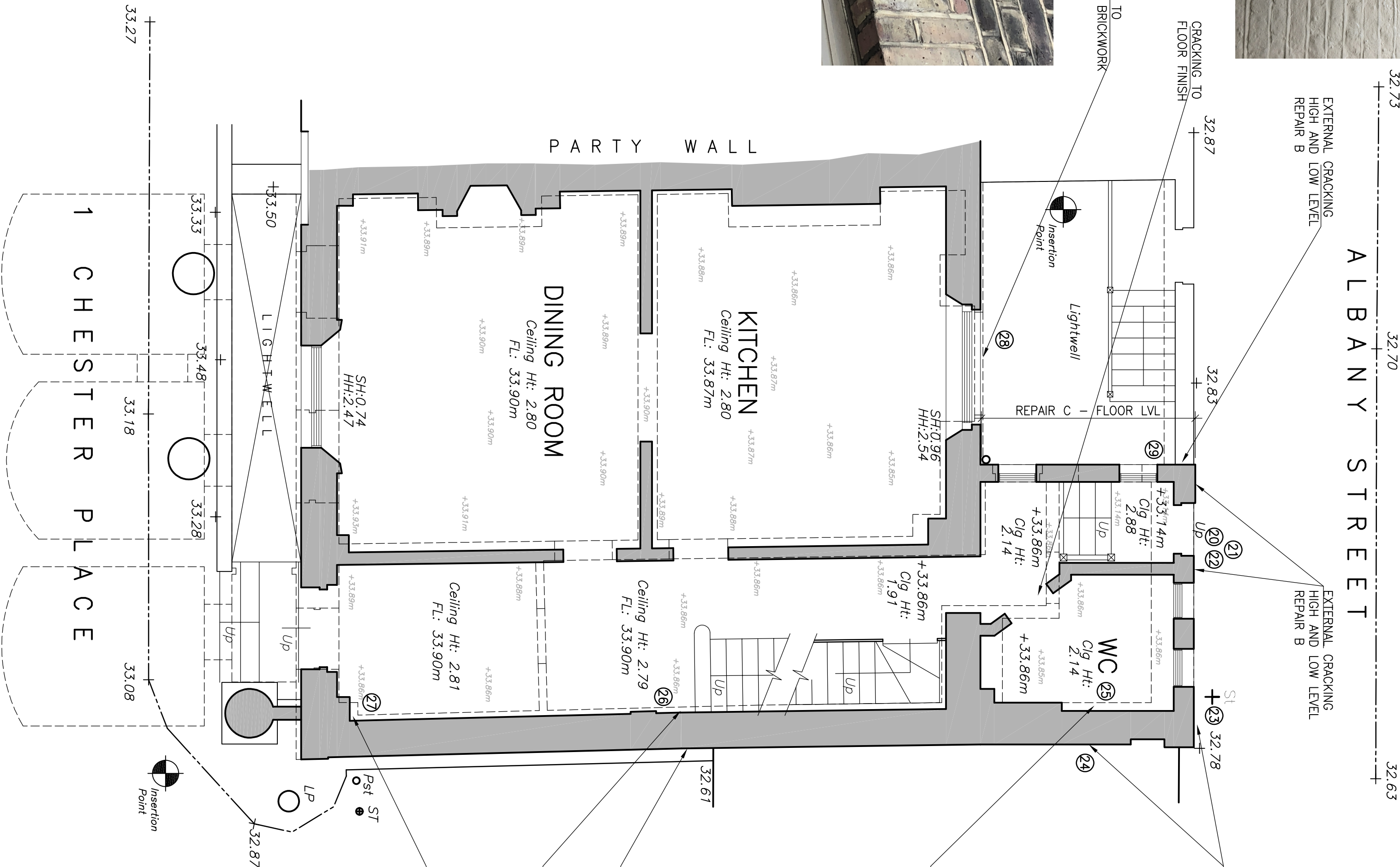
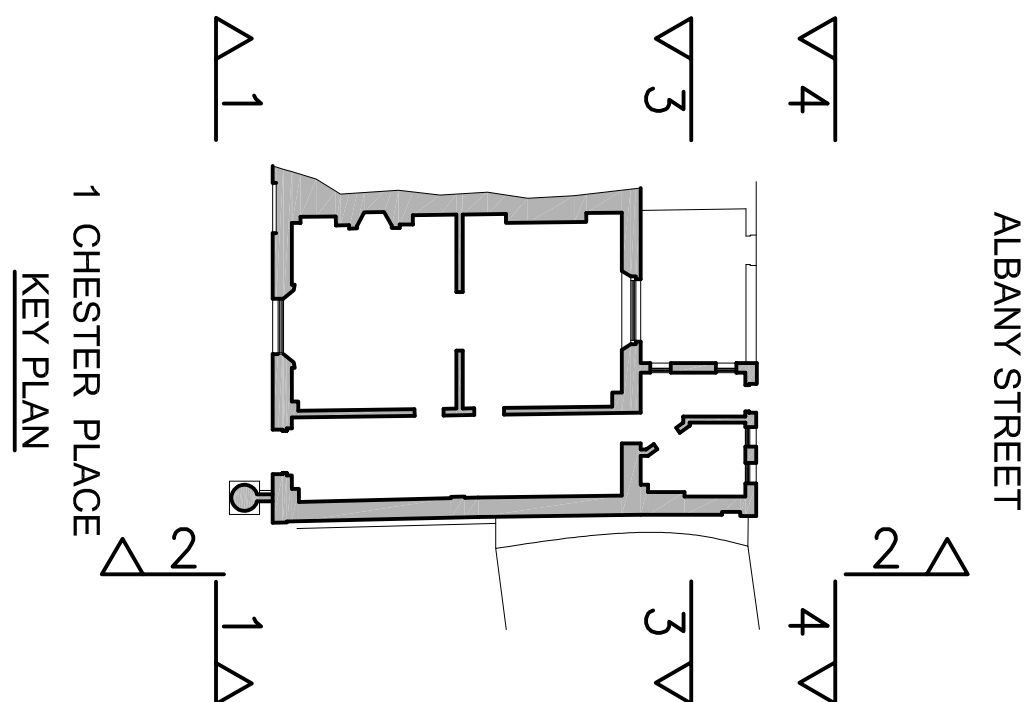


PHOTO 27



EXISTING GROUND FLOOR PLAN  
SCALE 1:50

REPAIR SCHEDULE	
Repair A	Hack off plaster to full length of crack. Replace any cracked bricks using NHL 3.5 mortar in 1:2½ mix. Install helibor every third course of brick in accordance with manufacturers details and instructions. Make good plaster and finishes for completion.
Repair B	Repair as schedule A but with external stucco/render. Make good stucco/render and decorate on completion.
Repair C	Install helifix bowties and bowtie HD's to floor, including nogging, fully in accordance with manufacturers instructions at approx 1200mm centres.
Repair D	Form helibeam bar bonds from 4 no. bars in 5mm stainless steel at 723mm vertical centres fully in accordance with manufacturers instructions at each floor plate.
Repair E	Strip back plaster and finishes. Fix existing timber stud back to flank wall with resin bolts – see details.
Repair F	Hack off plaster fro brickwork inspection. Allow for partial rebuild/making good of masonry and possible additional helibor to two faces as per repair A



1 CHESTER PLACE REGENTS PARK LONDON NW1 4NB	REPAIR DETAILS TO GROUND FLOOR	1:50 @ A1	DRAWING NUMBER 02962L/02	REVISION -
structurehaus consulting · engineering · designing LONDON OFFICE 020 8940 7810 EXETER OFFICE 01382 363497 info@structurehaus.com www.structurehaus.com		Drawn by JSP Date 26.02.2019	Checked by DALP Date 28.02.2019	Copyright

FOR TENDER