

**REPAIR SCHEDULE**

- Repair A**  
Hack off plaster to full length of crack. Replace any cracked bricks using MFL 3.5 mortar in 1:2:8 mix. Install helix every 400mm vertically and 400mm horizontally. Follow manufacturer's instructions. Make good plaster and finishes for completion.
- Repair B**  
Repair as schedule A but with external stucco/render. Make good stucco/render and decorate on completion.
- Repair C**  
Install helix, bowties and bowtie HD's to floor, including nogging, fully in accordance with manufacturers instructions at approx 1200mm centres.
- Repair D**  
Form helixbeam bar bands from 4 no. bars in 5mm stainless steel 42mm vertical centres with accordance with manufacturers instructions at each floor plate.
- Repair E**  
Strip back plaster and finishes. Fix existing timber stud back to flank wall with resin bolts – see details.
- Repair F**  
Hack off plaster for brickwork inspection. Allow for partial rebuild/making good of masonry and possible additional helixbar to two faces as per repair A

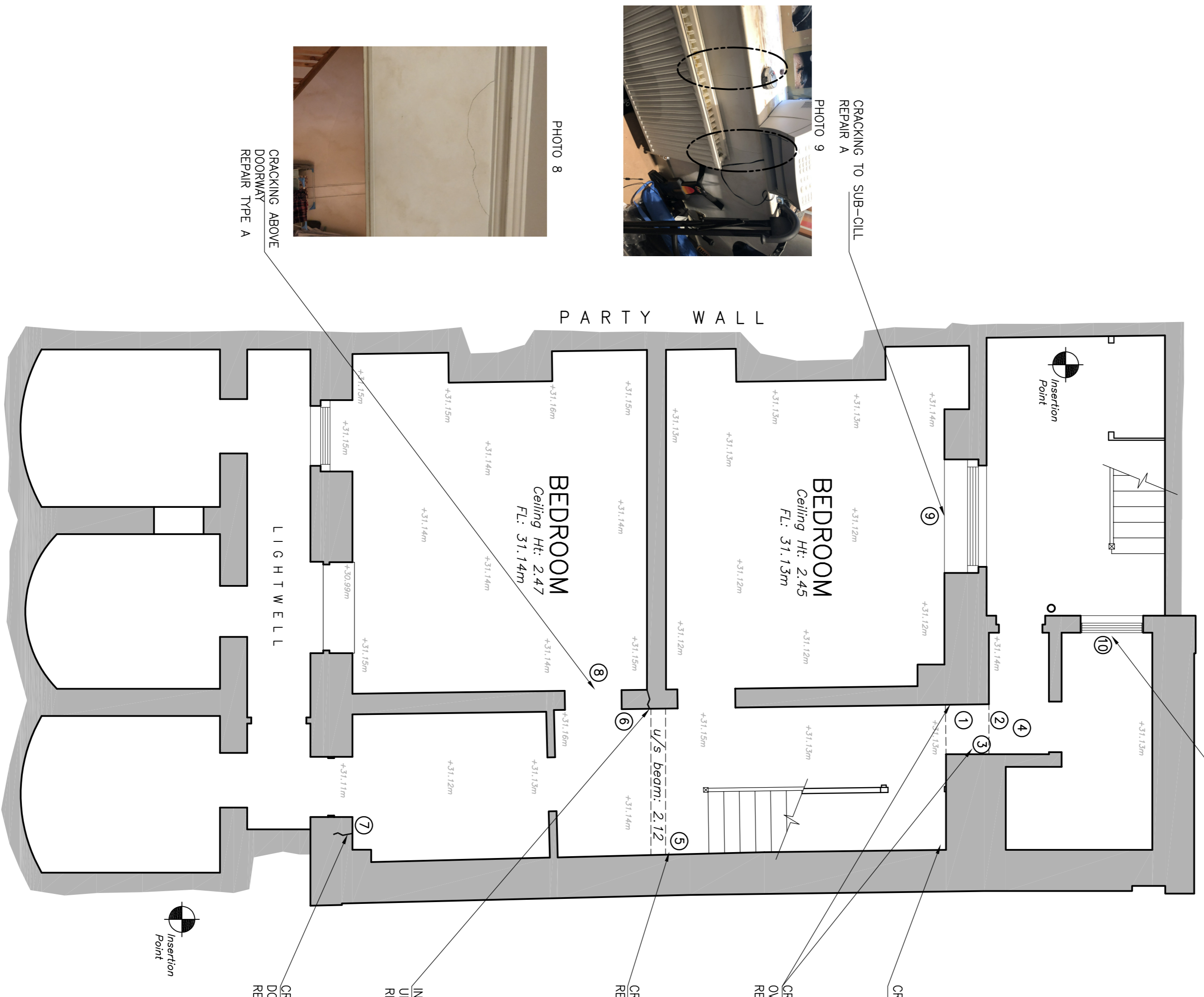
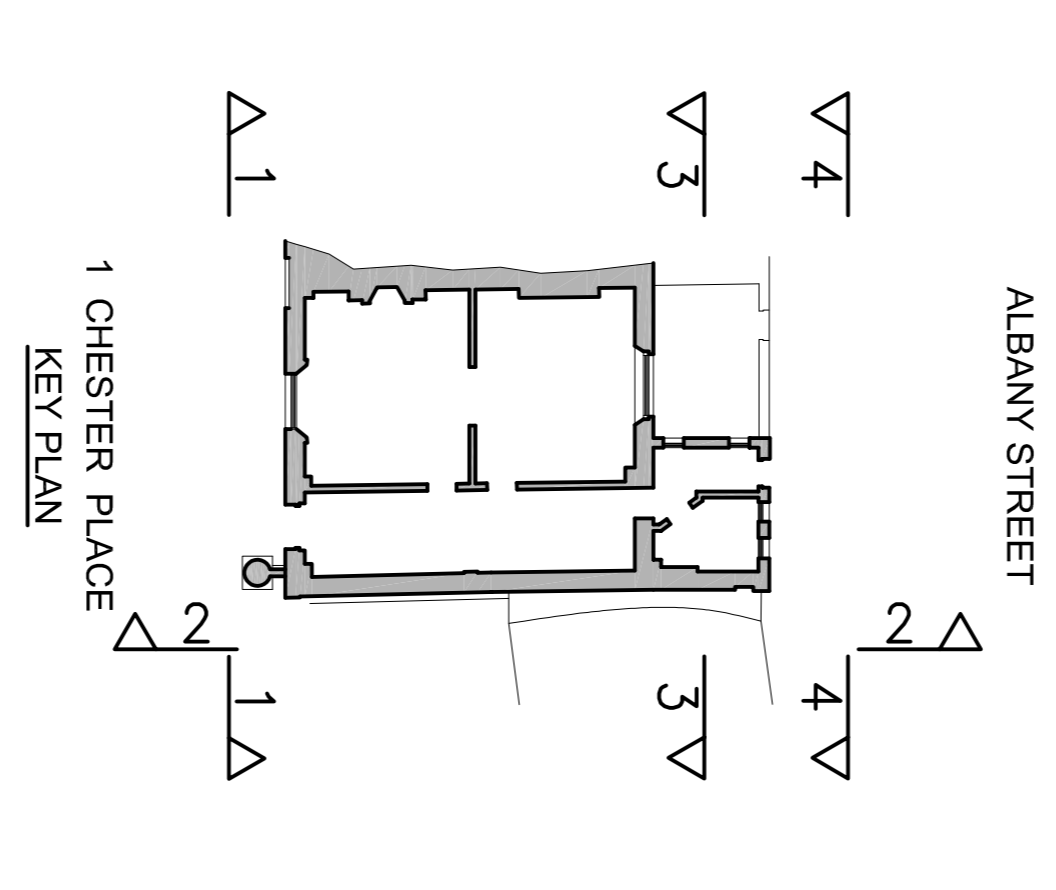


PHOTO 10  
SUB-CILL – REPAIR A



PHOTO 3



PHOTO 4



PHOTO 1



PHOTO 2



PHOTO 5



PHOTO 6



PHOTO 7



PHOTO 9



PHOTO 8

**EXISTING BASEMENT PLAN**  
SCALE 1:50

**FOR TENDER**

|  |   |
|--|---|
| <p><b>structurehaus</b><br/>consulting · engineering · designing</p> <p>LONDON OFFICE 020 8940 7810<br/>EXETER OFFICE 01392 363497</p> <p>info@structurehaus.com<br/>www.structurehaus.com</p> | <p><b>1 CHESTER PLACE</b><br/><b>REGENTS PARK</b><br/><b>LONDON NW1 4NB</b></p> <p><b>REPAIR DETAILS TO</b><br/><b>BASEMENT</b></p> <p><b>1:50 @ A1</b></p> <p>DRAWING NUMBER<br/><b>02962L/01</b></p> <p>Drawn by JSP Date 26.02.2019</p> <p>Checked by DALP Date 28.02.2019</p> |
|--|---|