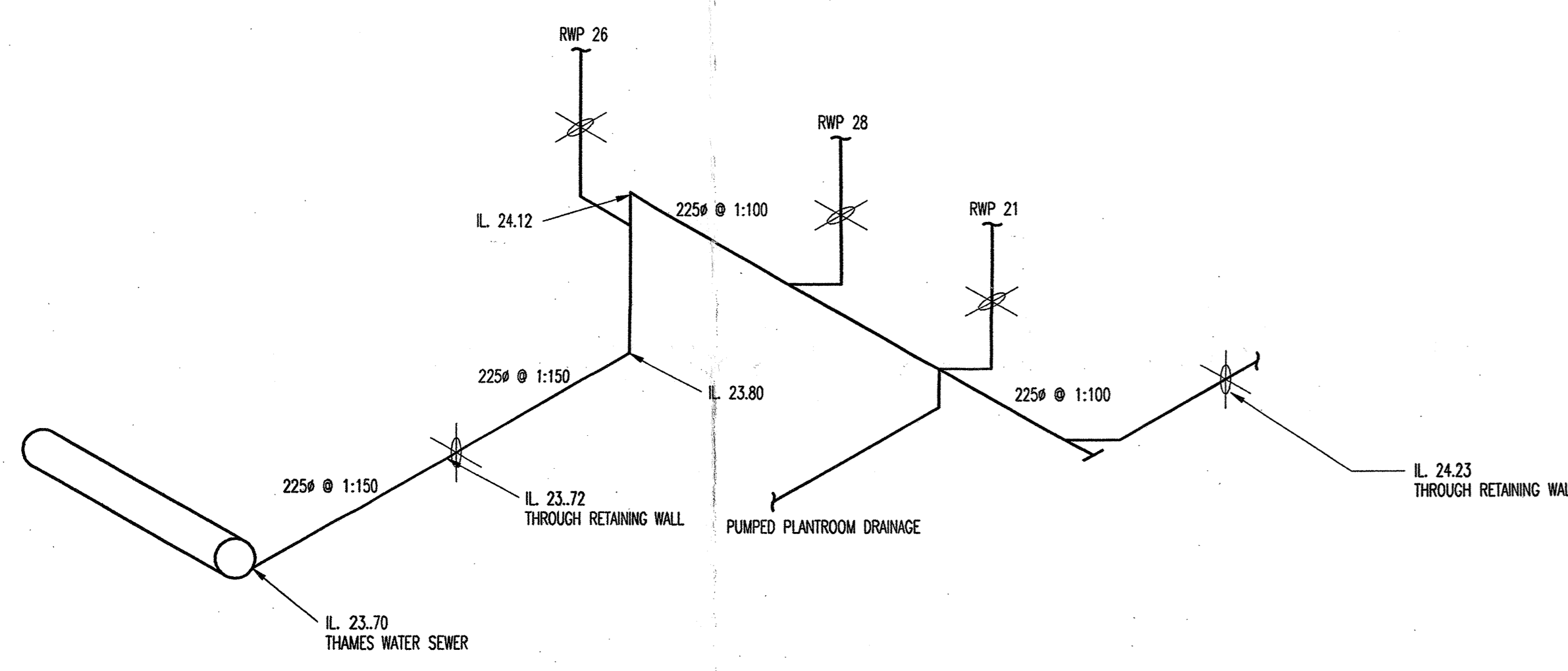
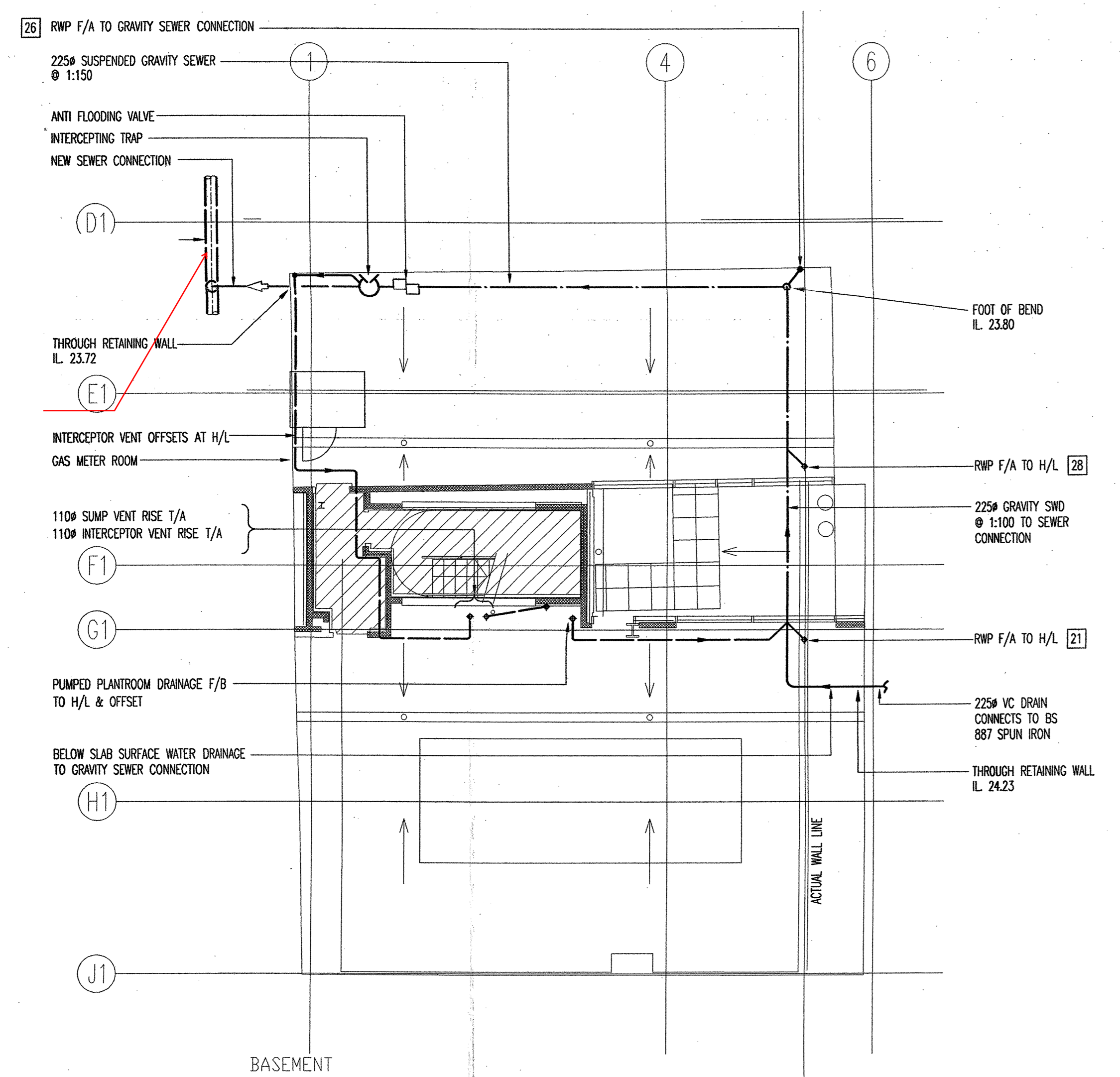


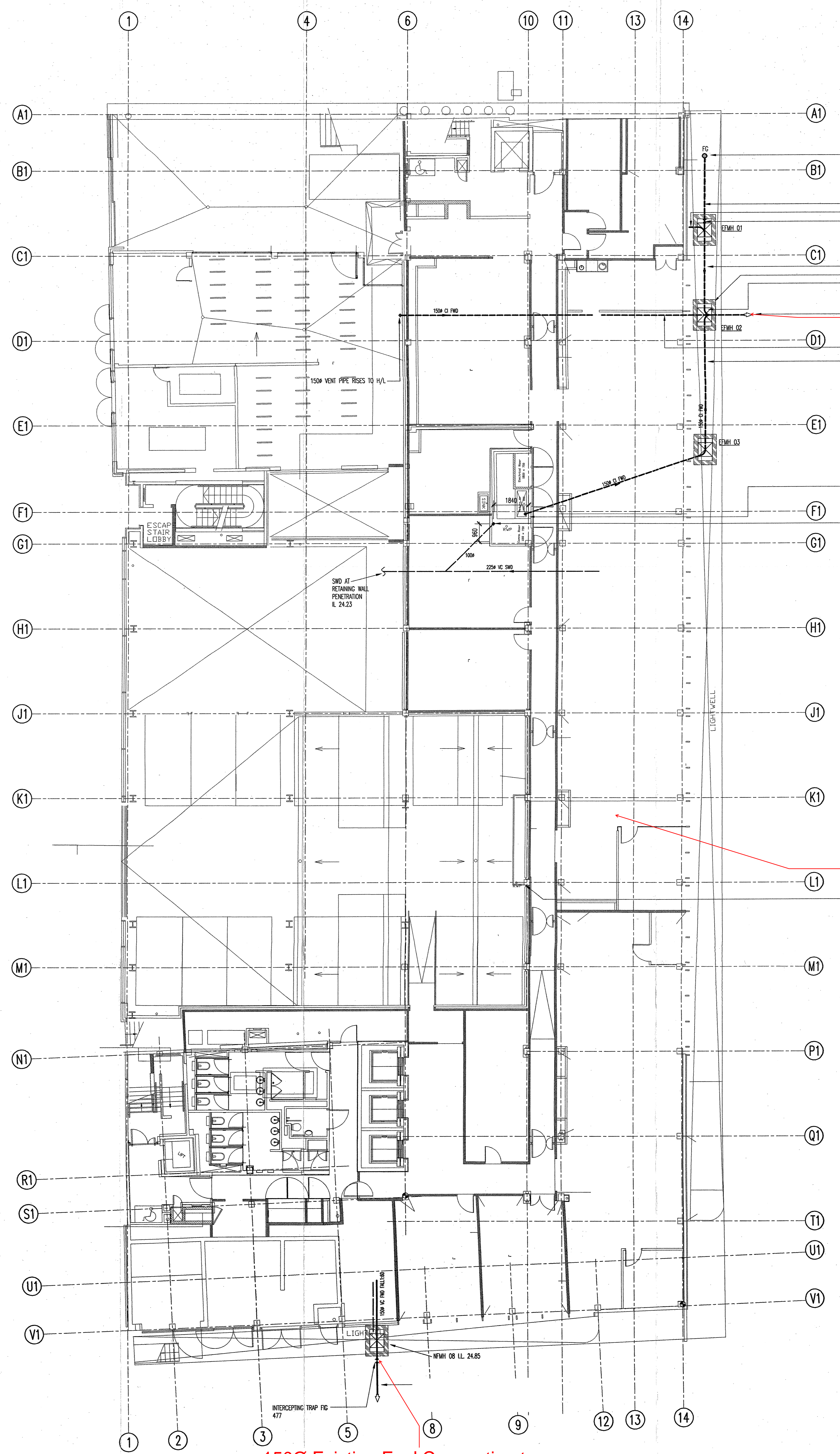
- THIS DRAWING IS TO BE READ IN CONJUNCTION WITH ALL RELEVANT ARCHITECTURAL, STRUCTURAL, MECHANICAL, ELECTRICAL & PUBLIC HEALTH DRAWINGS.
- FOR DETAILS OF MATERIALS & WORKMANSHIP REFER TO THE PUBLIC HEALTH BELOW GROUND SERVICES SPECIFICATION.
- CAR PARK GULLIES TO BE TRAPPED 300A, T0554P, WITH SEWAGE TRAP AS NOTED.
- ANY REDUNDANT DRAINS TO BE EITHER COMPLETELY REMOVED OR FILLED WITH CONCRETE.
- ALL NEW DRAINAGE LINES ARE TO BE VITRIFIED CLAY TO BS EN 285 WITH FLEXIBLE JOINTS LAD TO FALL AS SPECIFIED, WITH CLASS 5 BED AND SURROUND UNLESS STATED OTHERWISE.
- LIGHT WELL GULLIES AS PER DETAIL SD-P-10-082 (LW)
- PLANT ROOM GULLIES TO BE TRAPLESS 225A, T0467
- ALL MANHOLES TO USE BOLTED CAST IRON ACCESS CHAMBERS
- ALL EXISTING MANHOLES TO BE EQUIPPED WITH GALVANIZED WILD STEEL, DOUBLE SEAL MANHOLE COVERS.
- 600mm long ROCKER PIPES ARE TO BE PROVIDED 150mm max FROM EITHER SIDE OF MANHOLES, STUMPS OR WHERE THE DRAIN IS CAST AS PART OF THE STRUCTURE, AS DETAILED IN THE SPECIFICATION.
- LOCATIONS OF ALL EXISTING MANHOLES TO BE CONFIRMED ON SITE.
- LOCATIONS, LEVELS AND SIZES OF EXISTING DRAINLINES TO BE CONNECTED TO OR BUILT AROUND ARE TO BE CONFIRMED ON SITE.
- FOR DETAILS OF THE CONSTRUCTION SEQUENCE OF THE NEW DRAINAGE WORKS, REFER TO STRUCTURAL DRAWINGS.
- MANHOLE COVERS TYPE 1: BRISTLE WATER TIGHT (BWT) - TIGHT CLASS AA, 1.5t, GALVANIZED BY GUNNED BROOKHOUSE FABRICATED STEEL OR OTHER EQUIVALENT APPROVED.
- MANHOLE COVER TYPE 2: BRISTLE WATER TIGHT, DOUBLE COVER, CLASS B, 5t, COVER AND FRAME MANUFACTURED IN STAINLESS STEEL BY GUNNED BROOKHOUSE FABRICATED STEEL OR OTHER EQUIVALENT APPROVED.
- ROOFING EYE COVER TO BE F.C. FROST LTD. RE-300-U OR OTHER EQUIVALENT APPROVED.
- SHOWER DRAINAGE CHANNEL OUTLETS TO BE ACO EGS15 BELL TRAP GULLIES.
- FOR SHOWER DRAINAGE CHANNEL DETAILS REFER TO ARCHITECTS DRAWINGS.
- MANHOLE INSPECTION CHAMBERS UP TO 2250A TO BE SINGULAR TIMESHER OVER 2250A TO BE TRADITIONAL CAST IRON.
- ALL TAPERS AT MANHOLES TO BE LEVEL SOFTT.

LEGEND

305Ø Existing Sewer Connection to be Cleveland Mews to be reused



BASEMENT CONNECTION TO CLEVELAND MEWS



150Ø Existing Sewer Connection to be reused

Internal drainage provisions to be confirmed during following design stages

150Ø Existing Foul Connection to Howland Street sewer to be reused

Drainage Connections

Project Name 13 Fitzroy Street
 Job Number 259991
 Sketch Number SK-P-001
 Date 08 April 2019
 For Information AC

