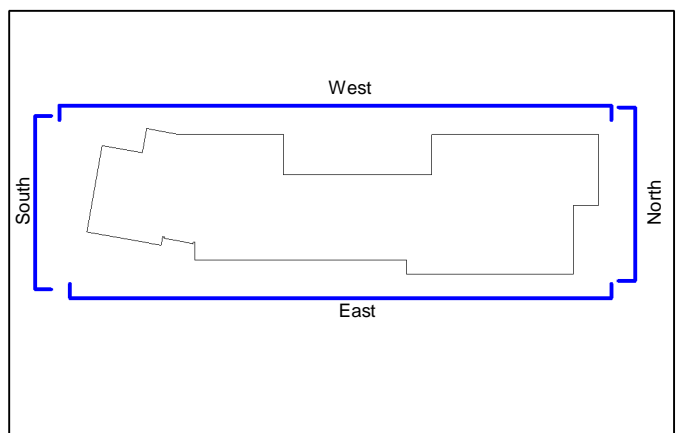


The contractor is responsible for checking dimensions, tolerances and references. Any discrepancy to be verified with the Architect before proceeding with the works. Where an item is covered by drawings to different scales the larger scale drawing is to be worked to.

Do not scale drawing. Figured dimensions to be worked to in all cases.

CDM REGULATIONS 2015. All current drawings and specifications for the project must be read in conjunction with the Designer's Hazard and Environment Assessment Record

All intellectual property rights reserved.



Key Plan Elevation
1 : 1000

DESIGN INTENT DRAWING ONLY

This drawing requires design development by the Contractor to achieve construction status including Building Regulations compliance, full detail resolution and co-ordination with all other Designers and Sub-Contractors. It is not a full description of the elements and components which will be required to satisfy those requirements and so the tenderer will need to allow for this development in their pricing.

DRAWING NOTES:

PPC = Polyester Powder Coated

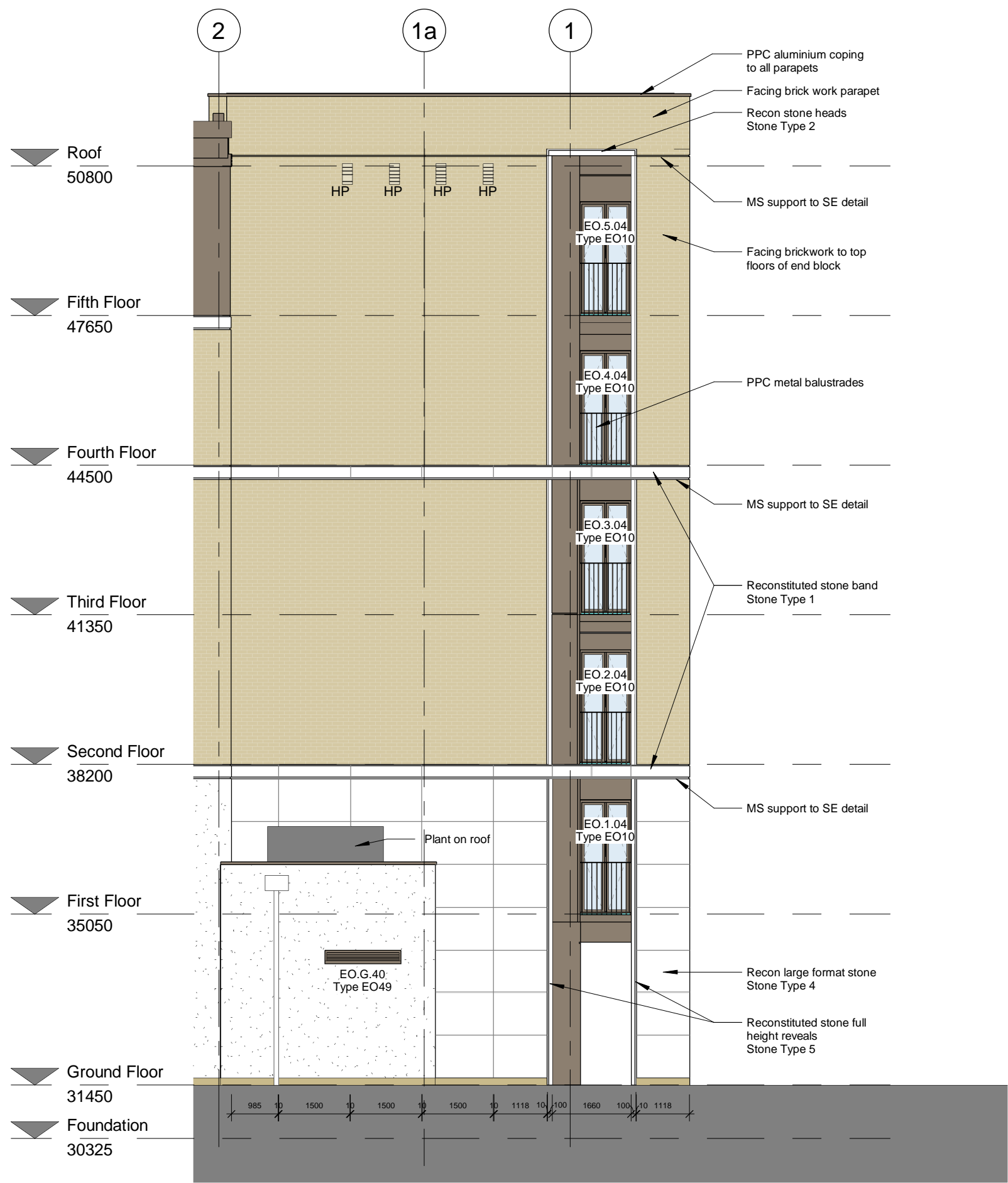
READ IN CONJUNCTION WITH ALL PLANNING DRAWINGS & ALL OTHER TENDER DRAWINGS, PARTICULAR DRG'S: AA4796/6005 & 6006.

NEIGHBOURING BUILDINGS OMITTED FOR CLARITY

FRONT BOUNDARY WALLS, RAILINGS AND GATES OMITTED FOR CLARITY



East Elevation (Southern End)
1 : 100



West Elevation (Southern End)
1 : 100

| | | | | |
|-----|----------|--|-----|-----|
| B | 24-04-19 | Non material Amendment for Planning | PJ | JB |
| A | 15-04-19 | Roof screens removed and updated to contractors comments, Revisions to stone - dims updated Recessed Joints clarified, PVS indicated | KS | PJ |
| - | 18-01-19 | First issue | PJ | JB |
| Rev | Date | Description | Dwn | Ckd |

Charlie Ratchford, Extra Care
Elevations Sheet 3

AA4796C-4039

REV B

Construction

| | | | | | | | |
|-------|--------|---------|---------|------|----------|-------|-------------------|
| Drawn | Author | Checked | Checker | Date | 11/21/18 | Scale | @ A1 As indicated |
|-------|--------|---------|---------|------|----------|-------|-------------------|

PRP

prp-co.uk
Surrey
020 8339 3600