

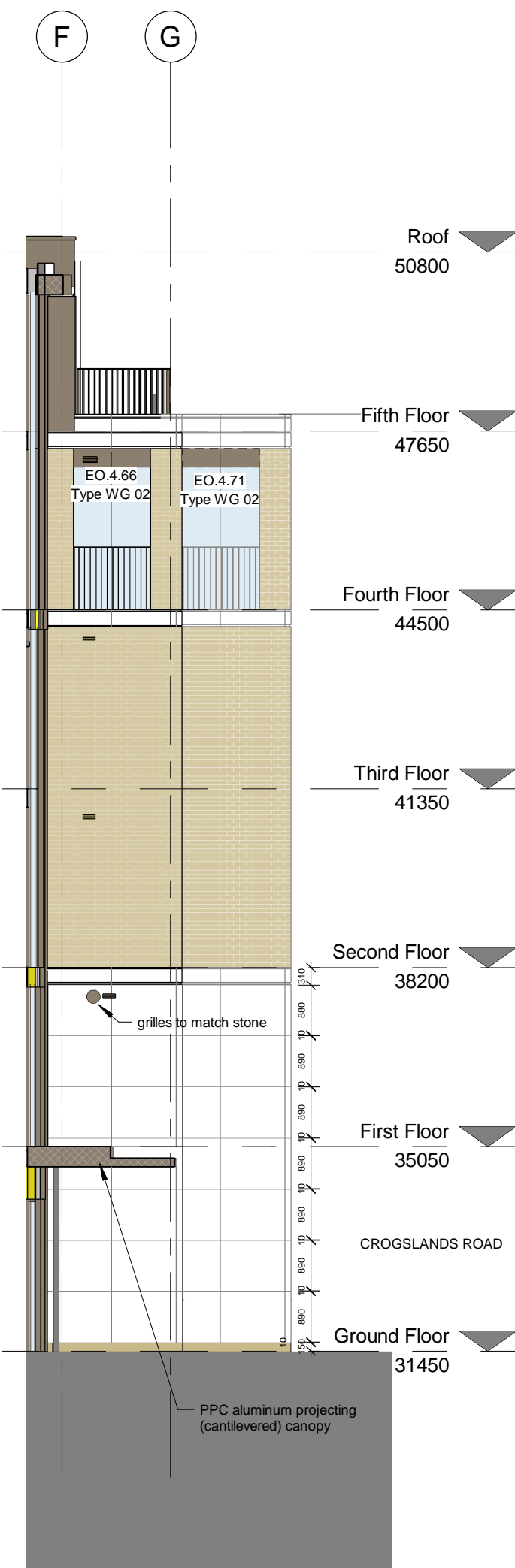
1 | South Elevation taken through Wintergarden
1 : 100



2 | Internal West Elevation
1 : 100



3 | South Main Elevation
1 : 100



4 | South Elevation at Stagger
1 : 100



5 | West Main Elevation
1 : 100

SBD BOX LEGEND

5 No ST. Sparrow Teraed
Dimensions: 100mm (w) 100mm (h) 100mm (d)
SP Schwinger Sparrow Teraed surface mounted or wall approved

5 No SB. Swift Box
Newman Box
Dimensions: 100mm (w) 140mm (h) 140mm (d)
No. 16 Schwinger Swift Box surface mounted or wall approved

GB. Generalist bird box
Dimensions:
Storm entrance hole will attract Great Blue, Marsh, Coal and Cuckoo, TL, Redstart, Nuthatch, Colaptes and Red Flycatcher, Wren, Tree and House Sparrows and Gold
18 Schwinger Nest Box for mounting on trees or wall approved

BATS BOX LEGEND

3 No HB. Habitat Bat Box
Six Bat boxes 65 by Wildlife or equal approved

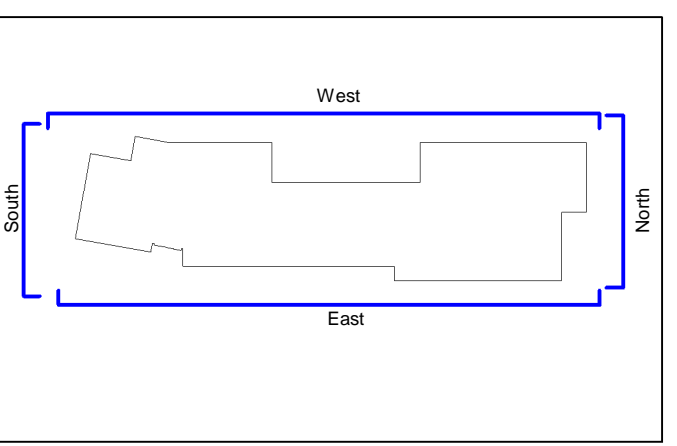
4 No Bat boxes 65 by Wildlife or equal approved

The contractor is responsible for checking dimensions, tolerances and references. Any discrepancy to be verified with the Architect before proceeding with the works. Where an item is covered by drawings to different scales the larger scale drawing is to be worked to.

Do not scale drawing. Figured dimensions to be worked to in all cases.

CDM REGULATIONS 2015: An current drawing and specifications for the project must be read in conjunction with the Designer's Hazard and Environment Assessment Report.

All intellectual property rights reserved.



Key Plan Elevation
1 : 1000

DESIGN INTENT DRAWING ONLY

This drawing requires design development by the Contractor to achieve construction status including Building Regulations compliance, full detail resolution and co-ordination with all other Drawings and Sub-Components. It is a design intent drawing and components which will be required to satisfy those requirements and to the tenderer will need to allow for the development in their pricing.

DRAWING NOTES:

PPC = Polyester Powder Coated

READ IN CONJUNCTION WITH ALL PLANNING DRAWINGS & ALL OTHER TENDER DRAWINGS. PARTICULAR DPG'S AA4796C & 8006.

NEIGHBOURING BUILDINGS OMITTED FOR CLARITY

FRONT BOUNDARY WALLS, RAILINGS AND GATES OMITTED FOR CLARITY

DRAWING REFERENCES:

AA4796C-4000 series
AA4796C-4001 - Ground Floor Key Plan
AA4796C-4002 - First Floor Key Plan
AA4796C-4003 - Second Floor Key Plan
AA4796C-4004 - Third Floor Key Plan
AA4796C-4005 - Fourth Floor Key Plan
AA4796C-4006 - Fifth Floor Key Plan
AA4796C-4007 - Roof Key Plan
AA4796C-4008 - Ground Floor Plans
AA4796C-4009 - First Floor Plans
AA4796C-4010 - Second Floor Plans
AA4796C-4011 - Third Floor Plans
AA4796C-4012 - Fourth Floor Plans
AA4796C-4013 - Fifth Floor Plans
AA4796C-4014 - Roof Plans
AA4796C-4015 - Building Sections
AA4796C-4016 - Flat Type A
AA4796C-4017 - Flat Type B
AA4796C-4018 - Flat Type C
AA4796C-4019 - Flat Type D
AA4796C-4020 - Flat Type E
AA4796C-4021 - Flat Type F
AA4796C-4022 - Flat Type G
AA4796C-4023 - Flat Type H
AA4796C-4024 - Flat Type I
AA4796C-4025 - Flat Type J
AA4796C-4026 - Flat Type K
AA4796C-4027 - Flat Type L
AA4796C-4028 - Flat Type M
AA4796C-4029 - Flat Type N
AA4796C-4030 - Flat Type O
AA4796C-4031 - Flat Type P
AA4796C-4032 - Flat Type Q
AA4796C-4033 - Flat Type R
AA4796C-4034 - Flat Type S
AA4796C-4035 - Flat Type T
AA4796C-4036 - Flat Type U
AA4796C-4037 - Flat Type V
AA4796C-4038 - Flat Type W
AA4796C-4039 - Flat Type X
AA4796C-4040 - Flat Type Y
AA4796C-4041 - Flat Type Z
AA4796C-4042 - Flat Type AA
AA4796C-4043 - Flat Type AB
AA4796C-4044 - Flat Type AC
AA4796C-4045 - Flat Type AD
AA4796C-4046 - Flat Type AE
AA4796C-4047 - Flat Type AF
AA4796C-4048 - Flat Type AG
AA4796C-4049 - Flat Type AH
AA4796C-4050 - Flat Type AI
AA4796C-4051 - Flat Type AJ
AA4796C-4052 - Flat Type AK
AA4796C-4053 - Flat Type AL
AA4796C-4054 - Flat Type AM
AA4796C-4055 - Flat Type AN
AA4796C-4056 - Flat Type AO
AA4796C-4057 - Flat Type AP
AA4796C-4058 - Flat Type AQ
AA4796C-4059 - Flat Type AR
AA4796C-4060 - Flat Type AS
AA4796C-4061 - Flat Type AT
AA4796C-4062 - Flat Type AU
AA4796C-4063 - Flat Type AV
AA4796C-4064 - Flat Type AW
AA4796C-4065 - Flat Type AX
AA4796C-4066 - Flat Type AY
AA4796C-4067 - Flat Type AZ
AA4796C-4068 - Flat Type BA
AA4796C-4069 - Flat Type BB
AA4796C-4070 - Flat Type BC
AA4796C-4071 - Flat Type BD
AA4796C-4072 - Flat Type BE
AA4796C-4073 - Flat Type BF
AA4796C-4074 - Flat Type BG
AA4796C-4075 - Flat Type BH
AA4796C-4076 - Flat Type BI
AA4796C-4077 - Flat Type BJ
AA4796C-4078 - Flat Type BK
AA4796C-4079 - Flat Type BL
AA4796C-4080 - Flat Type BM
AA4796C-4081 - Flat Type BN
AA4796C-4082 - Flat Type BO
AA4796C-4083 - Flat Type BP
AA4796C-4084 - Flat Type BQ
AA4796C-4085 - Flat Type BR
AA4796C-4086 - Flat Type BS
AA4796C-4087 - Flat Type BT
AA4796C-4088 - Flat Type BU
AA4796C-4089 - Flat Type BV
AA4796C-4090 - Flat Type BW
AA4796C-4091 - Flat Type BX
AA4796C-4092 - Flat Type BY
AA4796C-4093 - Flat Type BZ
AA4796C-4094 - Flat Type CA
AA4796C-4095 - Flat Type CB
AA4796C-4096 - Flat Type CC
AA4796C-4097 - Flat Type CD
AA4796C-4098 - Flat Type CE
AA4796C-4099 - Flat Type CF
AA4796C-4100 - Flat Type CG
AA4796C-4101 - Flat Type CH
AA4796C-4102 - Flat Type CI
AA4796C-4103 - Flat Type CJ
AA4796C-4104 - Flat Type CK
AA4796C-4105 - Flat Type CL
AA4796C-4106 - Flat Type CM
AA4796C-4107 - Flat Type CN
AA4796C-4108 - Flat Type CO
AA4796C-4109 - Flat Type CP
AA4796C-4110 - Flat Type CQ
AA4796C-4111 - Flat Type CR
AA4796C-4112 - Flat Type CS
AA4796C-4113 - Flat Type CT
AA4796C-4114 - Flat Type CU
AA4796C-4115 - Flat Type CV
AA4796C-4116 - Flat Type CW
AA4796C-4117 - Flat Type CX
AA4796C-4118 - Flat Type CY
AA4796C-4119 - Flat Type CZ
AA4796C-4120 - Flat Type DA
AA4796C-4121 - Flat Type DB
AA4796C-4122 - Flat Type DC
AA4796C-4123 - Flat Type DD
AA4796C-4124 - Flat Type DE
AA4796C-4125 - Flat Type DF
AA4796C-4126 - Flat Type DG
AA4796C-4127 - Flat Type DH
AA4796C-4128 - Flat Type DI
AA4796C-4129 - Flat Type DJ
AA4796C-4130 - Flat Type DK
AA4796C-4131 - Flat Type DL
AA4796C-4132 - Flat Type DM
AA4796C-4133 - Flat Type DN
AA4796C-4134 - Flat Type DO
AA4796C-4135 - Flat Type DP
AA4796C-4136 - Flat Type DQ
AA4796C-4137 - Flat Type DR
AA4796C-4138 - Flat Type DS
AA4796C-4139 - Flat Type DT
AA4796C-4140 - Flat Type DU
AA4796C-4141 - Flat Type DV
AA4796C-4142 - Flat Type DW
AA4796C-4143 - Flat Type DX
AA4796C-4144 - Flat Type DY
AA4796C-4145 - Flat Type DZ
AA4796C-4146 - Flat Type EA
AA4796C-4147 - Flat Type EB
AA4796C-4148 - Flat Type EC
AA4796C-4149 - Flat Type ED
AA4796C-4150 - Flat Type EE
AA4796C-4151 - Flat Type EF
AA4796C-4152 - Flat Type EG
AA4796C-4153 - Flat Type EH
AA4796C-4154 - Flat Type EI
AA4796C-4155 - Flat Type EJ
AA4796C-4156 - Flat Type EK
AA4796C-4157 - Flat Type EL
AA4796C-4158 - Flat Type EM
AA4796C-4159 - Flat Type EN
AA4796C-4160 - Flat Type EO
AA4796C-4161 - Flat Type EP
AA4796C-4162 - Flat Type EQ
AA4796C-4163 - Flat Type ER
AA4796C-4164 - Flat Type ES
AA4796C-4165 - Flat Type ET
AA4796C-4166 - Flat Type EU
AA4796C-4167 - Flat Type EV
AA4796C-4168 - Flat Type EW
AA4796C-4169 - Flat Type EX
AA4796C-4170 - Flat Type EY
AA4796C-4171 - Flat Type EZ
AA4796C-4172 - Flat Type FA
AA4796C-4173 - Flat Type FB
AA4796C-4174 - Flat Type FC
AA4796C-4175 - Flat Type FD
AA4796C-4176 - Flat Type FE
AA4796C-4177 - Flat Type FF
AA4796C-4178 - Flat Type FG
AA4796C-4179 - Flat Type FH
AA4796C-4180 - Flat Type FI
AA4796C-4181 - Flat Type FJ
AA4796C-4182 - Flat Type FK
AA4796C-4183 - Flat Type FL
AA4796C-4184 - Flat Type FM
AA4796C-4185 - Flat Type FN
AA4796C-4186 - Flat Type FO
AA4796C-4187 - Flat Type FP
AA4796C-4188 - Flat Type FQ
AA4796C-4189 - Flat Type FR
AA4796C-4190 - Flat Type FS
AA4796C-4191 - Flat Type FT
AA4796C-4192 - Flat Type FU
AA4796C-4193 - Flat Type FV
AA4796C-4194 - Flat Type FW
AA4796C-4195 - Flat Type FX
AA4796C-4196 - Flat Type FY
AA4796C-4197 - Flat Type FZ
AA4796C-4198 - Flat Type GA
AA4796C-4199 - Flat Type GB
AA4796C-4200 - Flat Type GC
AA4796C-4201 - Flat Type GD
AA4796C-4202 - Flat Type GE
AA4796C-4203 - Flat Type GF
AA4796C-4204 - Flat Type GG
AA4796C-4205 - Flat Type GH
AA4796C-4206 - Flat Type GI
AA4796C-4207 - Flat Type GJ
AA4796C-4208 - Flat Type GK
AA4796C-4209 - Flat Type GL
AA4796C-4210 - Flat Type GM
AA4796C-4211 - Flat Type GN
AA4796C-4212 - Flat Type GO
AA4796C-4213 - Flat Type GP
AA4796C-4214 - Flat Type GQ
AA4796C-4215 - Flat Type GR
AA4796C-4216 - Flat Type GS
AA4796C-4217 - Flat Type GT
AA4796C-4218 - Flat Type GU
AA4796C-4219 - Flat Type GV
AA4796C-4220 - Flat Type GW
AA4796C-4221 - Flat Type GX
AA4796C-4222 - Flat Type GY
AA4796C-4223 - Flat Type GZ
AA4796C-4224 - Flat Type HA
AA4796C-4225 - Flat Type HB
AA4796C-4226 - Flat Type HC
AA4796C-4227 - Flat Type HD
AA4796C-4228 - Flat Type HE
AA4796C-4229 - Flat Type HF
AA4796C-4230 - Flat Type HG
AA4796C-4231 - Flat Type HH
AA4796C-4232 - Flat Type HI
AA4796C-4233 - Flat Type HJ
AA4796C-4234 - Flat Type HK
AA4796C-4235 - Flat Type HL
AA4796C-4236 - Flat Type HM
AA4796C-4237 - Flat Type HN
AA4796C-4238 - Flat Type HO
AA4796C-4239 - Flat Type HP
AA4796C-4240 - Flat Type HQ
AA4796C-4241 - Flat Type HR
AA4796C-4242 - Flat Type HS
AA4796C-4243 - Flat Type HT
AA4796C-4244 - Flat Type HU
AA4796C-4245 - Flat Type HV
AA4796C-4246 - Flat Type HW
AA4796C-4247 - Flat Type HX
AA4796C-4248 - Flat Type HY
AA4796C-4249 - Flat Type HZ
AA4796C-4250 - Flat Type IA
AA4796C-4251 - Flat Type IB
AA4796C-4252 - Flat Type IC
AA4796C-4253 - Flat Type ID
AA4796C-4254 - Flat Type IE
AA4796C-4255 - Flat Type IF
AA4796C-4256 - Flat Type IG
AA4796C-4257 - Flat Type IH
AA4796C-4258 - Flat Type II
AA4796C-4259 - Flat Type IJ
AA4796C-4260 - Flat Type IK
AA4796C-4261 - Flat Type IL
AA4796C-4262 - Flat Type IM
AA4796C-4263 - Flat Type IN
AA4796C-4264 - Flat Type IO
AA4796C-4265 - Flat Type IP
AA4796C-4266 - Flat Type IQ
AA4796C-4267 - Flat Type IR
AA4796C-4268 - Flat Type IS
AA4796C-4269 - Flat Type IT
AA4796C-4270 - Flat Type IU
AA4796C-4271 - Flat Type IV
AA4796C-4272 - Flat Type IW
AA4796C-4273 - Flat Type IX
AA4796C-4274 - Flat Type IY
AA4796C-4275 - Flat Type IZ
AA4796C-4276 - Flat Type JA
AA4796C-4277 - Flat Type JB
AA4796C-4278 - Flat Type JC
AA4796C-4279 - Flat Type JD
AA4796C-4280 - Flat Type JE
AA4796C-4281 - Flat Type JF
AA4796C-4282 - Flat Type JG
AA4796C-4283 - Flat Type JH
AA4796C-4284 - Flat Type JI
AA4796C-4285 - Flat Type JJ
AA4796C-4286 - Flat Type JK
AA4796C-4287 - Flat Type JL
AA4796C-4288 - Flat Type JM
AA4796C-4289 - Flat Type JN
AA4796C-4290 - Flat Type JO
AA4796C-4291 - Flat Type JP
AA4796C-4292 - Flat Type JQ
AA4796C-4293 - Flat Type JR
AA4796C-4294 - Flat Type JS
AA4796C-4295 - Flat Type JT
AA4796C-4296 - Flat Type JU
AA4796C-4297 - Flat Type JV
AA4796C-4298 - Flat Type JW
AA4796C-4299 - Flat Type JX
AA4796C-4300 - Flat Type JY
AA4796C-4301 - Flat Type JZ
AA4796C-4302 - Flat Type KA
AA4796C-4303 - Flat Type KB
AA4796C-4304 - Flat Type KC
AA4796C-4305 - Flat Type KD
AA4796C-4306 - Flat Type KE
AA4796C-4307 - Flat Type KF
AA4796C-4308 - Flat Type KG
AA4796C-4309 - Flat Type KH
AA4796C-4310 - Flat Type KI
AA4796C-4311 - Flat Type KJ
AA4796C-4312 - Flat Type KK
AA4796C-4313 - Flat Type KL
AA4796C-4314 - Flat Type KM
AA4796C-4315 - Flat Type KN
AA4796C-4316 - Flat Type KO
AA4796C-4317 - Flat Type KP
AA4796C-4318 - Flat Type KQ
AA4796C-4319 - Flat Type KR
AA4796C-4320 - Flat Type KS
AA4796C-4321 - Flat Type KT
AA4796C-4322 - Flat Type KU
AA4796C-4323 - Flat Type KV
AA4796C-4324 - Flat Type KW
AA4796C-4325 - Flat Type KX
AA4796C-4326 - Flat Type KY
AA4796C-4327 - Flat Type KZ
AA4796C-4328 - Flat Type LA
AA4796C-4329 - Flat Type LB
AA4796C-4330 - Flat Type LC
AA4796C-4331 - Flat Type LD
AA4796C-4332 - Flat Type LE
AA4796C-4333 - Flat Type LF
AA4796C-4334 - Flat Type LG
AA4796C-4335 - Flat Type LH
AA4796C-4336 - Flat Type LI
AA4796C-4337 - Flat Type LJ
AA4796C-4338 - Flat Type LK
AA4796C-4339 - Flat Type LL
AA4796C-4340 - Flat Type LM
AA4796C-4341 - Flat Type LN
AA4796C-4342 - Flat Type LO
AA4796C-4343 - Flat Type LP
AA4796C-4344 - Flat Type LQ
AA4796C-4345 - Flat Type LR
AA4796C-4346 - Flat Type LS
AA4796C-4347 - Flat Type LT
AA4796C-4348 - Flat Type LU
AA4796C-4349 - Flat Type LV
AA4796C-4350 - Flat Type LW
AA4796C-4351 - Flat Type LX
AA4796C-4352 - Flat Type LY
AA4796C-4353 - Flat Type LZ
AA4796C-4354 - Flat Type MA
AA4796C-4355 - Flat Type MB
AA4796C-4356 - Flat Type MC
AA4796C-4357 - Flat Type MD
AA4796C-4358 - Flat Type ME
AA4796C-4359 - Flat Type MF
AA4796C-4360 - Flat Type MG
AA4796C-4361 - Flat Type MH
AA4796C-4362 - Flat Type MI
AA4796C-4363 - Flat Type MJ
AA4796C-4364 - Flat Type MK
AA4796C-4365 - Flat Type ML
AA4796C-4366 - Flat Type MN
AA4796C-4367 - Flat Type MO
AA4796C-4368 - Flat Type MP
AA4796C-4369 - Flat Type MQ
AA4796C-4370 - Flat Type MR
AA4796C-4371 - Flat Type MS
AA4796C-4372 - Flat Type MT
AA4796C-4373 - Flat Type MU
AA4796C-4374 - Flat Type MV
AA4796C-4375 - Flat Type MW
AA4796C-4376 - Flat Type MX
AA4796C-4377 - Flat Type MY
AA4796C-4378 - Flat Type MZ
AA4796C-4379 - Flat Type NA
AA4796C-4380 - Flat Type NB
AA4796C-4381 - Flat Type NC
AA4796C-4382 - Flat Type ND
AA4796C-4383 - Flat Type NE
AA4796C-4384 - Flat Type NF
AA4796C-4385 - Flat Type NG
AA4796C-4386 - Flat Type NH
AA4796C-4387 - Flat Type NI
AA4796C-4388 - Flat Type NJ
AA4796C-4389 - Flat Type NK
AA4796C-4390 - Flat Type NL
AA4796C-4391 - Flat Type NM
AA4796C-4392 - Flat Type NO
AA4796C-4393 - Flat Type NP
AA4796C-4394 - Flat Type NQ
AA4796C-4395 - Flat Type NR
AA4796C-4396 - Flat Type NS
AA4796C-4397 - Flat Type NT
AA4796C-4398 - Flat Type NU
AA4796C-4399 - Flat Type NV
AA4796C-4400 - Flat Type NW
AA4796C-4401 - Flat Type NX
AA4796C-4402 - Flat Type NY
AA4796C-4403 - Flat Type NZ
AA4796C-4404 - Flat Type OA
AA4796C-4405 - Flat Type OB
AA4796C-4406 - Flat Type OC
AA4796C-4407 - Flat Type OD
AA4796C-4408 - Flat Type OE
AA4796C-4409 - Flat Type OF
AA4796C-4410 - Flat Type OG
AA4796C-4411 - Flat Type OH
AA4796C-4412 - Flat Type OI
AA4796C-4413 - Flat Type OJ
AA4796C-4414 - Flat Type OK
AA4796C-4415 - Flat Type OL
AA4796C-4416 - Flat Type OM
AA4796C-4417 - Flat Type ON
AA4796C-4418 - Flat Type OO
AA4796C-4419 - Flat Type OP
AA4796C-4420 - Flat Type OQ
AA4796C-4421 - Flat Type OR
AA4796C-4422 - Flat Type OS
AA4796C-4423 - Flat Type OT
AA4796C-4424 - Flat Type OU
AA4796C-4425 - Flat Type OV
AA4796C-4426 - Flat Type OW
AA4796C-4427 - Flat Type OX
AA4796C-4428 - Flat Type OY
AA4796C-4429 - Flat Type OZ
AA4796C-4430 - Flat Type PA
AA4796C-4431 - Flat Type PB
AA4796C-4432 - Flat Type PC
AA4796C-4433 - Flat Type PD
AA4796C-4434 - Flat Type PE
AA4796C-4435 - Flat Type PF
AA4796C-4436 - Flat Type PG
AA4796C-4437 - Flat Type PH
AA4796C-4438 - Flat Type PI
AA4796C-4439 - Flat Type PJ
AA4796C-4440 - Flat Type PK
AA4796C-4441 - Flat Type PL
AA4796C-4442 - Flat Type PM
AA4796C-4443 - Flat Type PN
AA4796C-4444 - Flat Type PO
AA4796C-4445 - Flat Type PP
AA4796C-4446 - Flat Type PQ
AA4796C-4447 - Flat Type PR
AA4796C-4448 - Flat Type PS
AA4796C-4449 - Flat Type PT
AA4796C-4450 - Flat Type PU
AA4796C-4451 - Flat Type PV
AA4796C-4452 - Flat Type PW
AA4796C-4453 - Flat Type PX
AA4796C-4454 - Flat Type PY
AA4796C-4455 - Flat Type PZ
AA4796C-4456 - Flat Type QA
AA4796C-4457 - Flat Type QB
AA4796C-4458 - Flat Type QC
AA4796C-4459 - Flat Type QD
AA4796C-4460 - Flat Type QE
AA4796C-4461 - Flat Type QF
AA4796C-4462 - Flat Type QG
AA4796C-4463 - Flat Type QH
AA4796C-4464 - Flat Type QI
AA4796C-4465 - Flat Type QJ
AA4796C-4466 - Flat Type QK
AA4796C-4467 - Flat Type QL
AA4796C-4468 - Flat Type QM
AA4796C-4469 - Flat Type QN
AA4796C-4470 - Flat Type QO
AA4796C-4471 - Flat Type QP
AA4796C-4472 - Flat Type QQ
AA4796C-4473 - Flat Type QR
AA4796C-4474 - Flat Type QS
AA4796C-4475 - Flat Type QT
AA4796C-4476 - Flat Type QU
AA4796C-4477 - Flat Type QV
AA4796C-4478 - Flat Type QW
AA4796C-4479 - Flat Type QX
AA4796C-4480 - Flat Type QY
AA4796C-4481 - Flat Type QZ
AA4796C-4482 - Flat Type RA
AA4796C-4483 - Flat Type RB
AA4796C-4484 - Flat Type RC
AA4796C-4485 - Flat Type RD
AA4796C-4486 - Flat Type RE
AA4796C-4487 - Flat Type RF
AA4796C-4488 - Flat Type RG
AA4796C-4489 - Flat Type RH
AA4796C-4490 - Flat Type RI
AA4796C-4491 - Flat Type RJ
AA4796C-4492 - Flat Type RK
AA4796C-4493 - Flat Type RL
AA4796C-4494 - Flat Type RM
AA4796C-4495 - Flat Type RN
AA4796C-4496 - Flat Type RO
AA4796C-4497 - Flat Type RP
AA4796C-4498 - Flat Type RQ
AA4796C-4499 - Flat Type RR
AA4796C-4500 - Flat Type RS
AA4796C-4501 - Flat Type RT
AA4796C-4502 - Flat Type RU
AA4796C-4503 - Flat Type RV
AA4796C-4504 - Flat Type RW
AA4796C-4505 - Flat Type RX
AA4796C-4506 - Flat Type RY
AA4796C-4507 - Flat Type RZ
AA4796C-4508 - Flat Type SA
AA4796C-4509 - Flat Type SB
AA4796C-4510 - Flat Type SC
AA4796C-4511 - Flat Type SD
AA4796C-4512 - Flat Type SE
AA4796C-4513 - Flat Type SF
AA4796C-4514 - Flat Type SG
AA4796C-4515 - Flat Type SH
AA4796C-4516 - Flat Type SI
AA4796C-4517 - Flat Type SJ
AA4796C-4518 - Flat Type SK
AA4796C-4519 - Flat Type SL
AA4796C-4520 - Flat Type SM
AA4796C-4521 - Flat Type SN
AA4796C-4522 - Flat Type SO
AA4796C-4523 - Flat Type SP
AA4796C-4524 - Flat Type SQ
AA4796C-4525 - Flat Type SR
AA4796C-4526 - Flat Type SS
AA4796C-4527 - Flat Type ST
AA4796C-4528 - Flat Type SU
AA4796C-4529 - Flat Type SV
AA4796C-4530 - Flat Type SW
AA4796C-4531 - Flat Type SX
AA4796C-4532 - Flat Type SY
AA4796C-4533 - Flat Type SZ
AA4796C-4534 - Flat Type TA
AA4796C-4535 - Flat Type TB
AA4796C-4536 - Flat Type TC
AA4796C-4537 - Flat Type TD
AA4796C-4538 - Flat Type TE
AA4796C-4539 - Flat Type TF
AA4796C-4540 - Flat Type TG
AA4796C-4541 - Flat Type TH
AA4796C-4542 - Flat Type TI
AA4796C-4543 - Flat Type TJ
AA4796C-4544 - Flat Type TK
AA4796C-4545 - Flat Type TL
AA4796C-4546 - Flat Type TM
AA4796C-4547 - Flat Type TN
AA4796C-4548 - Flat Type TO
AA4796C-4549 - Flat Type TP
AA4796C-4550 - Flat Type TQ
AA4796C-4551 - Flat Type TR
AA4796C-4552 - Flat Type TS
AA4796C-4553 - Flat Type TT
AA4796C-4554 - Flat Type TU
AA4796C-4555 - Flat Type TV
AA4796C-4556 - Flat Type TW
AA4796C-4557 - Flat Type TX
AA4796C-4558 - Flat Type TY
AA4796C-4559 - Flat Type TZ
AA4796C-4560 - Flat Type UA
AA4796C-4561 - Flat Type UB
AA4796C-4562 - Flat Type UC
AA4796C-4563 - Flat Type UD
AA4796C-4564 - Flat Type UE
AA4796C-4565 - Flat Type UF
AA4796C-4566 - Flat Type UG
AA4796C-4567 - Flat Type UH
AA4796C-4568 - Flat Type UI
AA4796C-4569 - Flat Type UJ
AA4796C-4570 - Flat Type UK
AA4796C-4571 - Flat Type UL
AA4796C-4572 - Flat Type UM
AA4796C-4573 - Flat Type UN
AA4796C-4574 - Flat Type UO
AA4796C-4575 - Flat Type UP
AA4796C-4576 - Flat Type UQ
AA4796C-4577 - Flat Type UR
AA4796C-4578 - Flat Type US
AA4796C-4579 - Flat Type UT
AA4796C-4580 - Flat Type UV
AA4796C-4581 - Flat Type UW
AA4796C-4582 - Flat Type UX
AA4796C-4583 - Flat Type UY
AA4796C-4584 - Flat Type UZ
AA4796C-4585 - Flat Type VA
AA4796C-4586 - Flat Type VB
AA4796C-4587 - Flat Type VC
AA4796C-4588 - Flat Type VD
AA4796C-4589 - Flat Type VE
AA4796C-4590 - Flat Type VF
AA4796C-4591 - Flat Type VG
AA4796C-4592 - Flat Type VH
AA4796C-4593 - Flat Type VI
AA4796C-4594 - Flat Type VJ
AA4796C-4595 - Flat Type VK
AA4796C-4596 - Flat Type VL
AA4796C-4597 - Flat Type VM
AA4796C-4598 - Flat Type VN
AA4796C-4599 - Flat Type VO
AA4796C-4600 - Flat Type VP
AA4796C-4601 - Flat Type VQ
AA4796C-4602 - Flat Type VR
AA4796C-4603 - Flat Type VS
AA4796C-