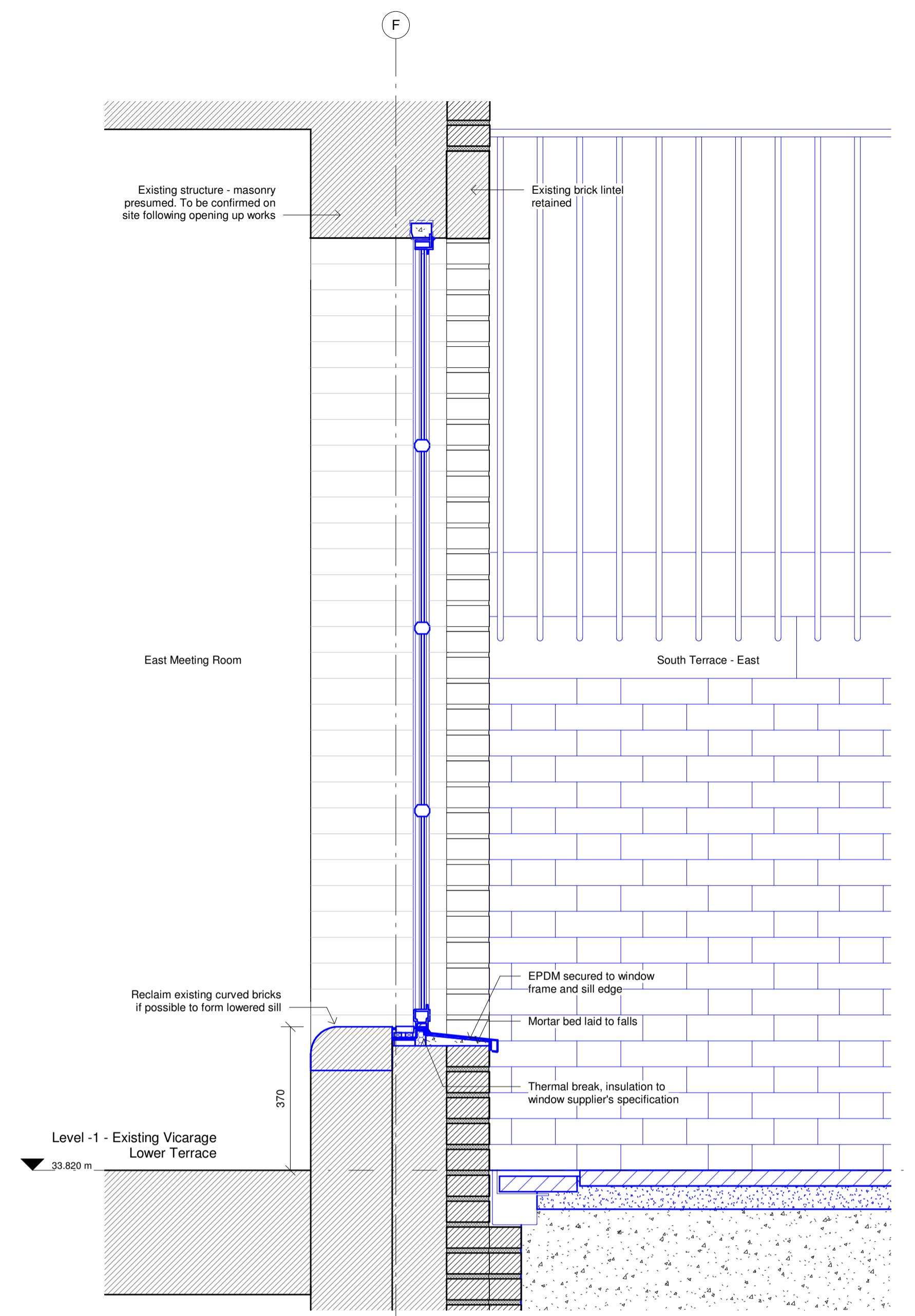
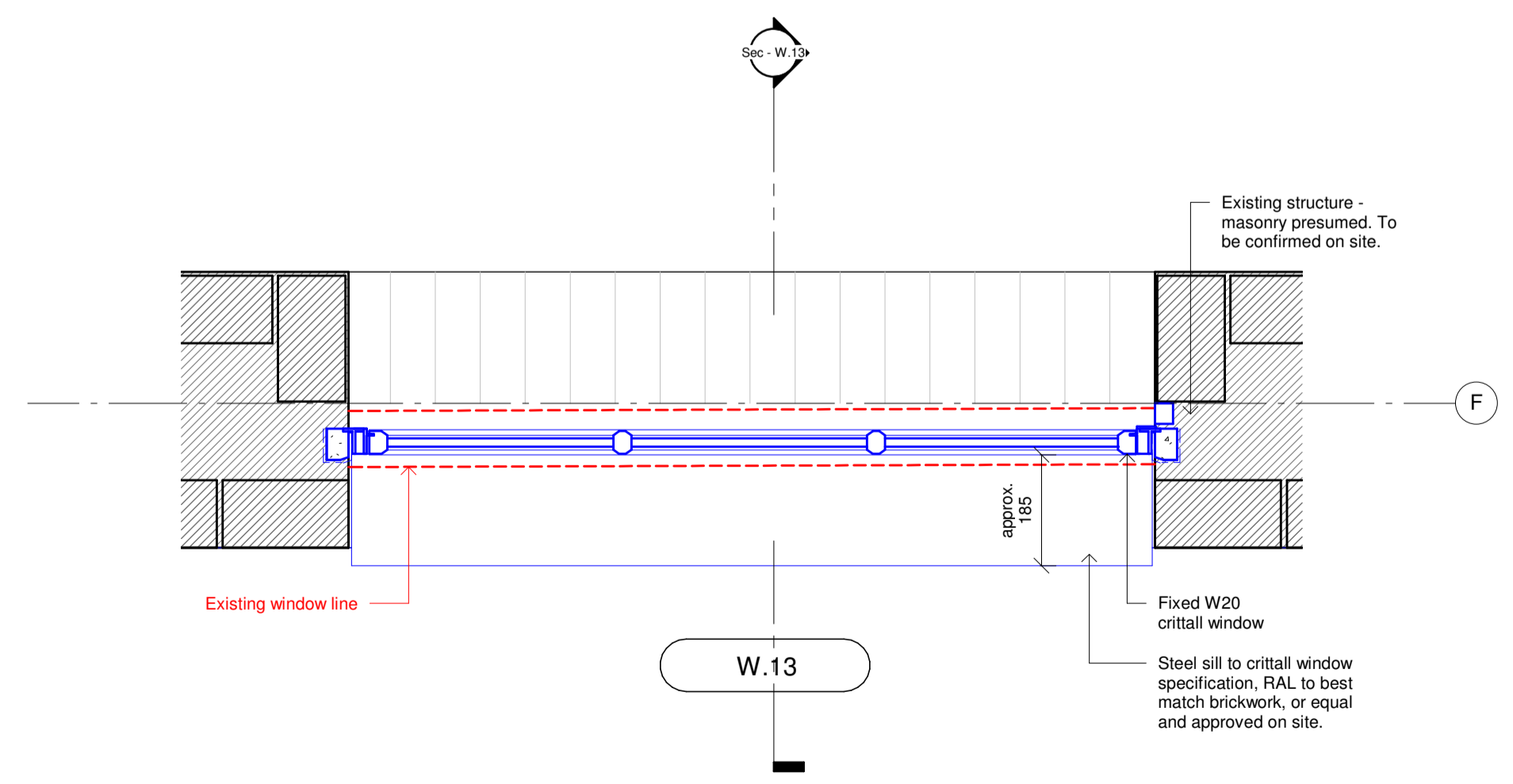


Ele - W.13
1:10



Sec - W.13
1:10



W.13

D.01

Description	Crittall W20 double glazed fixed window - achieved by lowering existing windowsill.
Approx. structural opening size	1400 x 2100mm
Clear opening width	n/a
Threshold / sill	Crittall steel sill, as shown. RAL to best match existing brickwork adjacent, or equal and approved.
Finishes	Hot-dip galvanised post fabrication to prevent corrosion. Duralife polyester powder coated. RAL to match existing condition.
Glazing	Double-glazed - 4mm Low E Toughened safety glass
Ironmongery	n/a

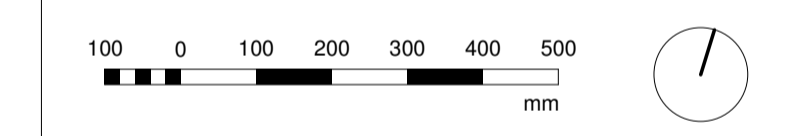
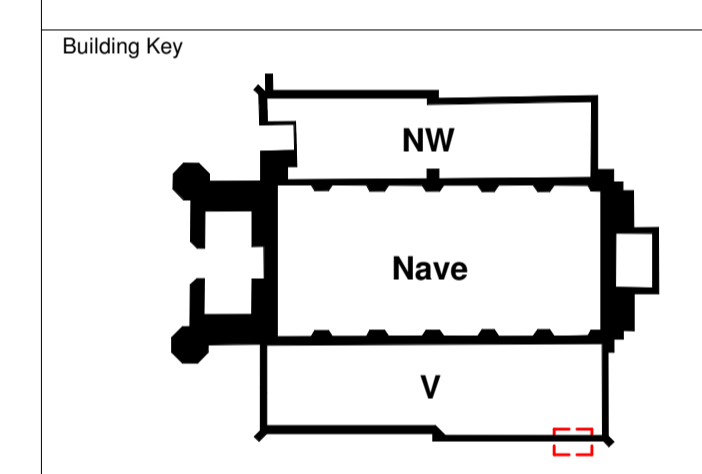
Existing Condition



GENERAL NOTES
DO NOT SCALE OFF THIS DRAWING. ALL DIMENSIONS MUST BE CHECKED ON SITE INFORM THE ARCHITECT OF ANY DISCREPANCIES PRIOR TO CONSTRUCTION. THIS DRAWING IS COPYRIGHT & MAY NOT BE OTHERWISE USED OR COPIED. READ IN CONJUNCTION WITH M.E.P. S.E. AND CIVIL ENGINEER'S DRAWINGS.
CDM REGULATIONS 2015
ALL CURRENT DRAWINGS AND SPECIFICATIONS FOR THE PROJECT MUST BE READ IN CONJUNCTION WITH THE DESIGNER'S HAZARD AND ENVIRONMENTAL ASSESSMENT RECORD

Key
Existing
Proposed

Please note
1. All structural opening dimensions shown are subject to confirmation on site, following opening up works and surveys undertaken by specialist subcontractor.
2. All final window and door sizes are subject to confirmation by specialist window and door suppliers.



The Danish Church
4 St Katharine's Precinct
London NW1 4HH

C.F. Møller
Telephone House, 69-77 Paul Street
London, EC2A 4NW
United Kingdom
Tel.: +44 020 7427 1530
london@cfmoller.com
Europaplads 2, 11
8000 Aarhus C
Denmark
Tel.: +45 8730 5300
www.cfmoller.com

Rev	Description	By	Chk	Date
C	Planning Condition Discharge	HBA	RN	16.04.19

The Danish Church
Title
The Vicarage - Crittall Terrace Window - W.13

Project No.
85331
Status
Stage 4 - TENDER
Scale @ A1
1 : 10
Date
08/02/19
Revision
C
Drawing Number
85331-CFM-21-611