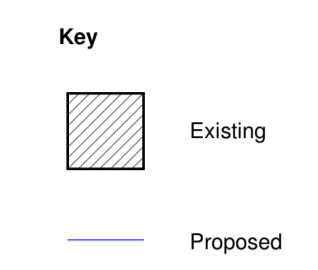
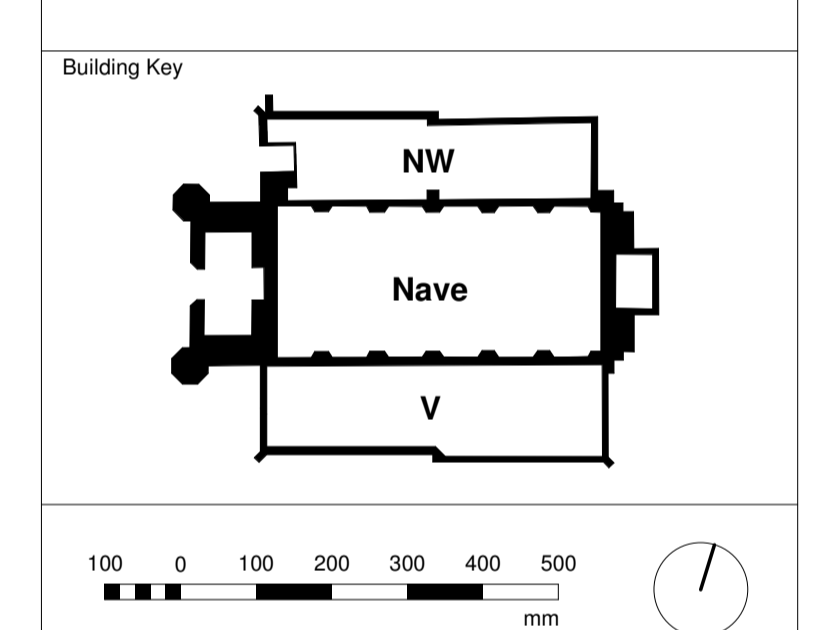


GENERAL NOTES
 DO NOT SCALE OFF THIS DRAWING.
 ALL DIMENSIONS MUST BE CHECKED ON SITE INFORM THE ARCHITECT OF ANY DISCREPANCIES PRIOR TO CONSTRUCTION.
 THIS DRAWING IS COPYRIGHT & MAY NOT BE OTHERWISE USED OR COPIED.
 READ IN CONJUNCTION WITH M.E.P. S.E. AND CIVIL ENGINEER'S DRAWINGS.
 CDM REGULATIONS 2015
 ALL CURRENT DRAWINGS AND SPECIFICATIONS FOR THE PROJECT MUST BE READ IN CONJUNCTION WITH THE DESIGNER'S HAZARD AND ENVIRONMENTAL ASSESSMENT RECORD

Key

 Existing
 Proposed

Please note
 1. All structural opening dimensions shown are subject to confirmation on site, following opening up works and surveys undertaken by specialist subcontractor.
 2. All final window and door sizes are subject to confirmation by specialist window and door suppliers.



The Danish Church
 4 St Katharine's Precinct
 London NW1 4HH

C.F. Møller

Telephone House, 69-77 Paul Street
 London, EC2A 4NW
 United Kingdom
 Tel.: +44 020 7427 1530
 london@cfmoller.com

Europagade 2, 11
 8000 Aarhus C
 Denmark
 Tel.: +45 8730 5300
 www.cfmoller.com

Rev	Description	By	Chk	Date
C	Planning Condition Discharge	HBA	RN	16.04.19
A	Tender Issues	HBA	RN	08.02.19

The Danish Church

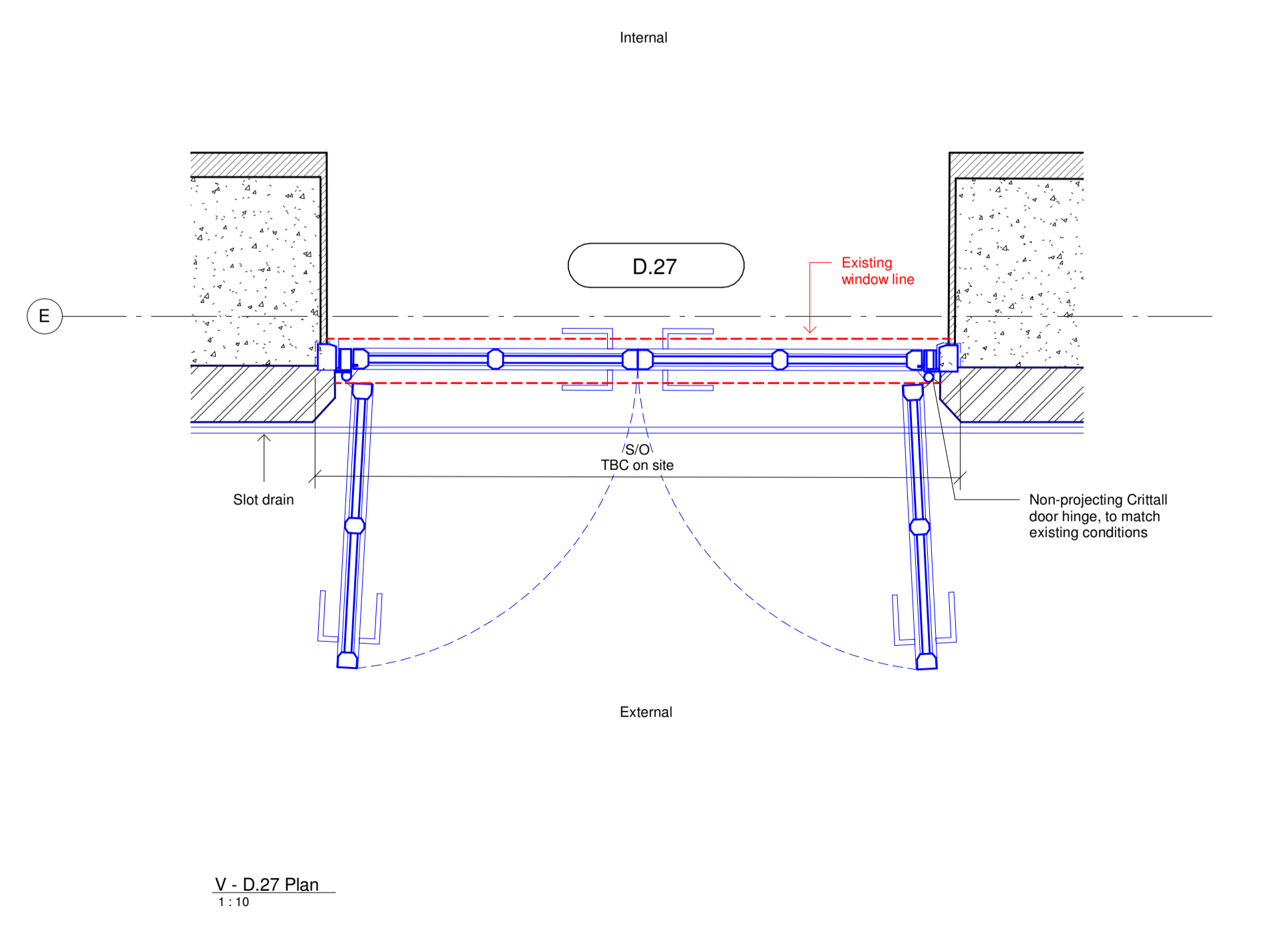
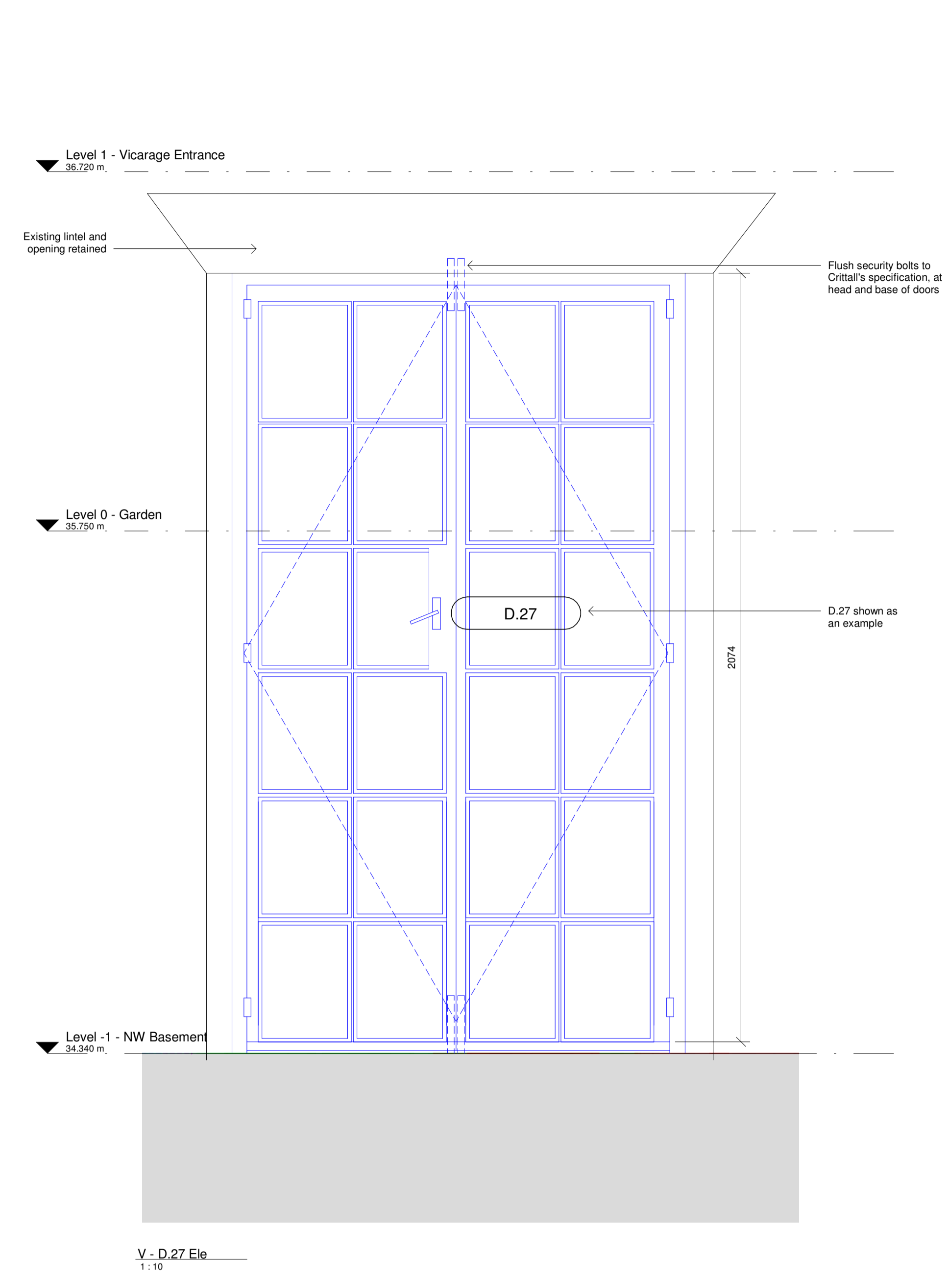
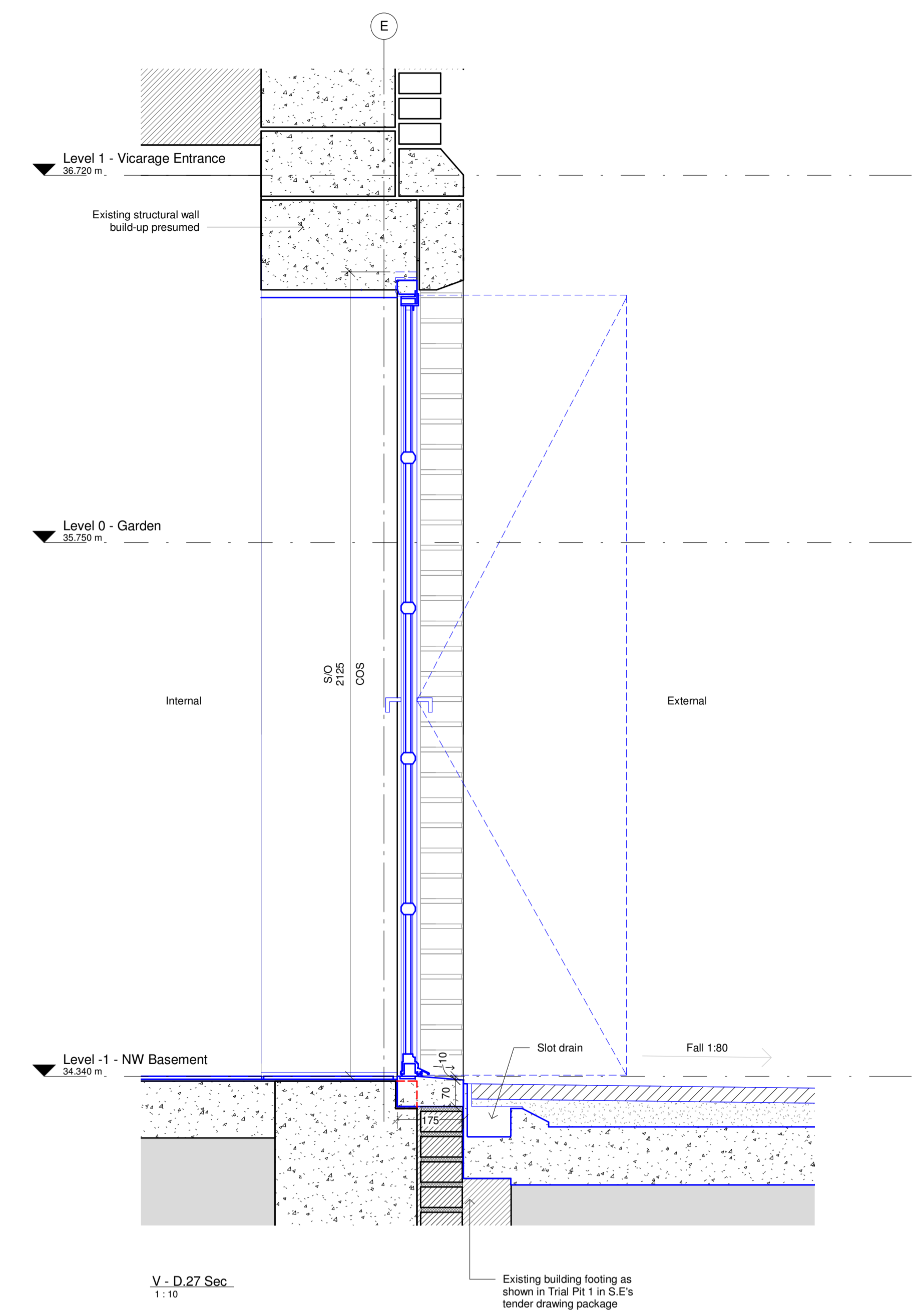
The Vicarage - Typical Crittall Terrace Doors - D.25, D.27 - 29

Project No.
85331

Status
Stage 4 - TENDER

Scale @ A1	Date	Revision
1 : 10	08/02/19	C

Drawing Number
85331-CFM-21-610



D.25, 27-29

Description	Crittall W20 double glazed double door with weld on non-projecting hinges. Provides new second means of escape to the Vicarage basement.
Approx. structural opening size	To be surveyed in detail on site
Structural opening width	To be surveyed in detail on site
Threshold	Sloped threshold to match terrace stone.
Finishes	Hot-dip galvanised post fabrication to prevent corrosion. Duralife polyester powder coated - RAL to match existing
Glazing	Double-glazed - 4mm Low E Toughened safety glass
Ironmongery	Crittall standard bronze handles. Flush security bolts inset, top and bottom.

Existing Condition

