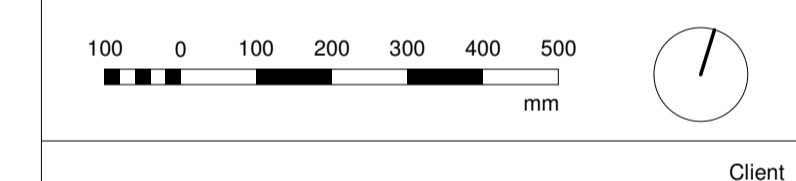
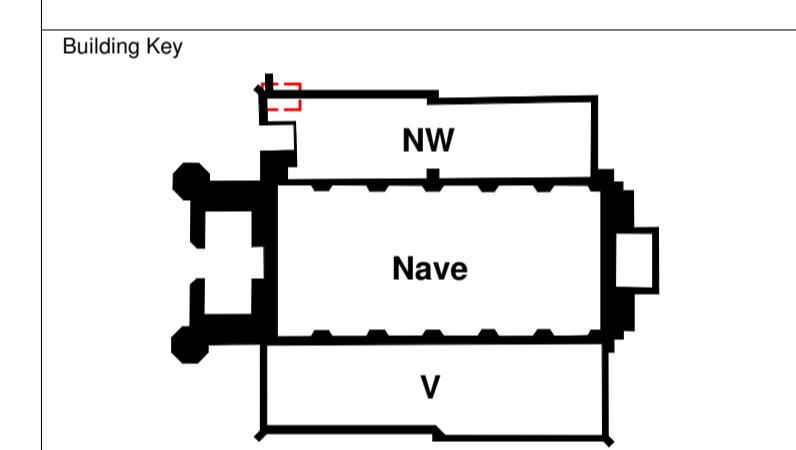


GENERAL NOTES
 DO NOT SCALE OFF THIS DRAWING.
 ALL DIMENSIONS MUST BE CHECKED ON SITE INFORM THE ARCHITECT OF ANY DISCREPANCIES PRIOR TO CONSTRUCTION.
 THIS DRAWING IS COPYRIGHT & MAY NOT BE OTHERWISE USED OR COPIED.
 READ IN CONJUNCTION WITH M.E.P. S.E. AND CIVIL ENGINEER'S DRAWINGS.
 CDM REGULATIONS 2015
 ALL CURRENT DRAWINGS AND SPECIFICATIONS FOR THE PROJECT MUST BE READ IN CONJUNCTION WITH THE DESIGNER'S HAZARD AND ENVIRONMENTAL ASSESSMENT RECORD

- Key**
- Existing
 - Proposed
- Please note**
- All structural opening dimensions shown are subject to confirmation on site, following opening up works and surveys undertaken by specialist subcontractor.
 - All final window and door sizes are subject to confirmation by specialist window and door suppliers.



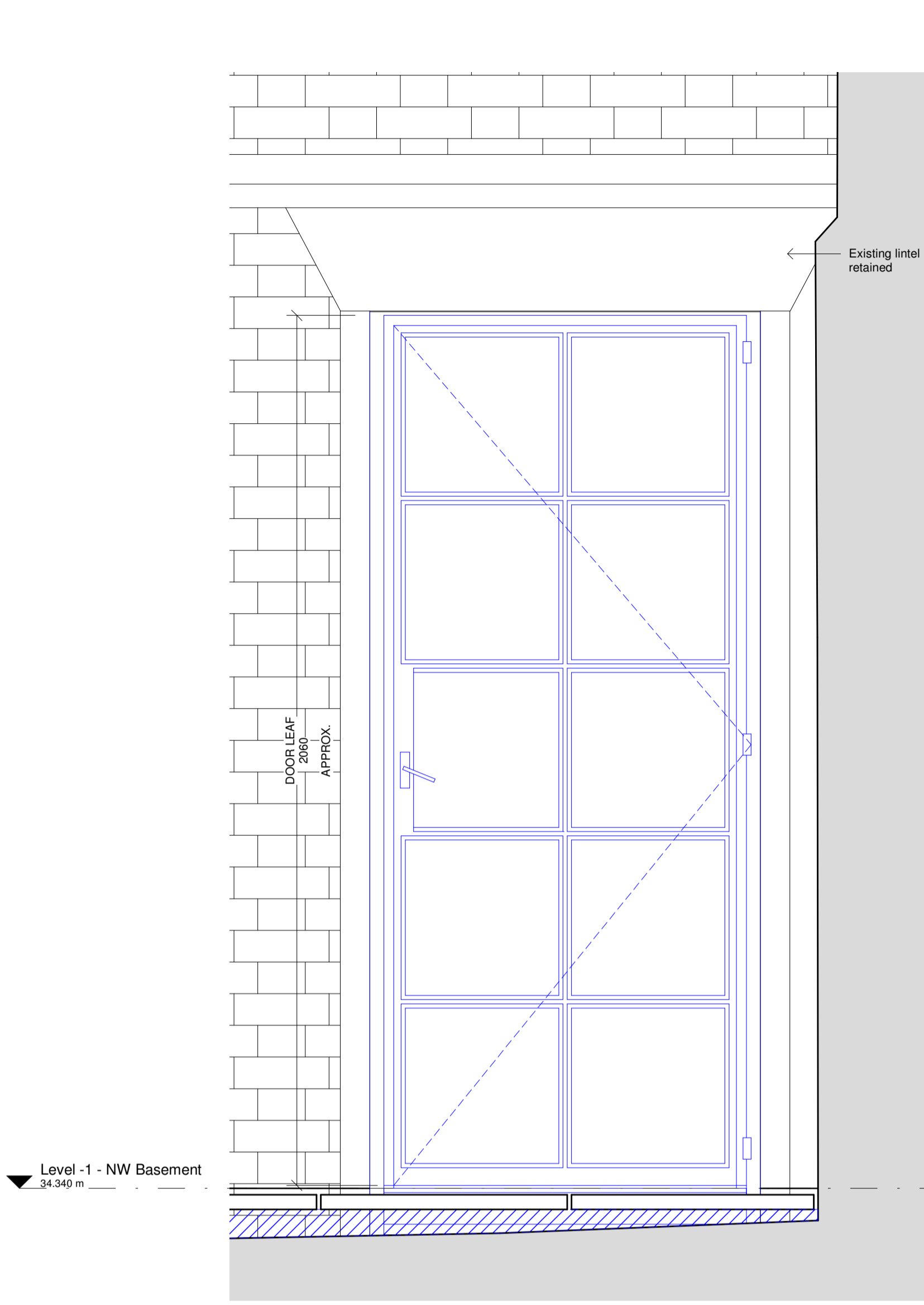
Client
 The Danish Church
 4 St Katharine's Precinct
 London NW1 4HH

C.F. Møller
 Telephone House, 69-77 Paul Street
 London, EC2A 4NW
 United Kingdom
 Tel.: +44 020 7427 1530
 london@cfmoller.com
 Europaplads 2, 11
 8000 Aarhus C
 Denmark
 Tel.: +45 8730 5300
 www.cfmoller.com

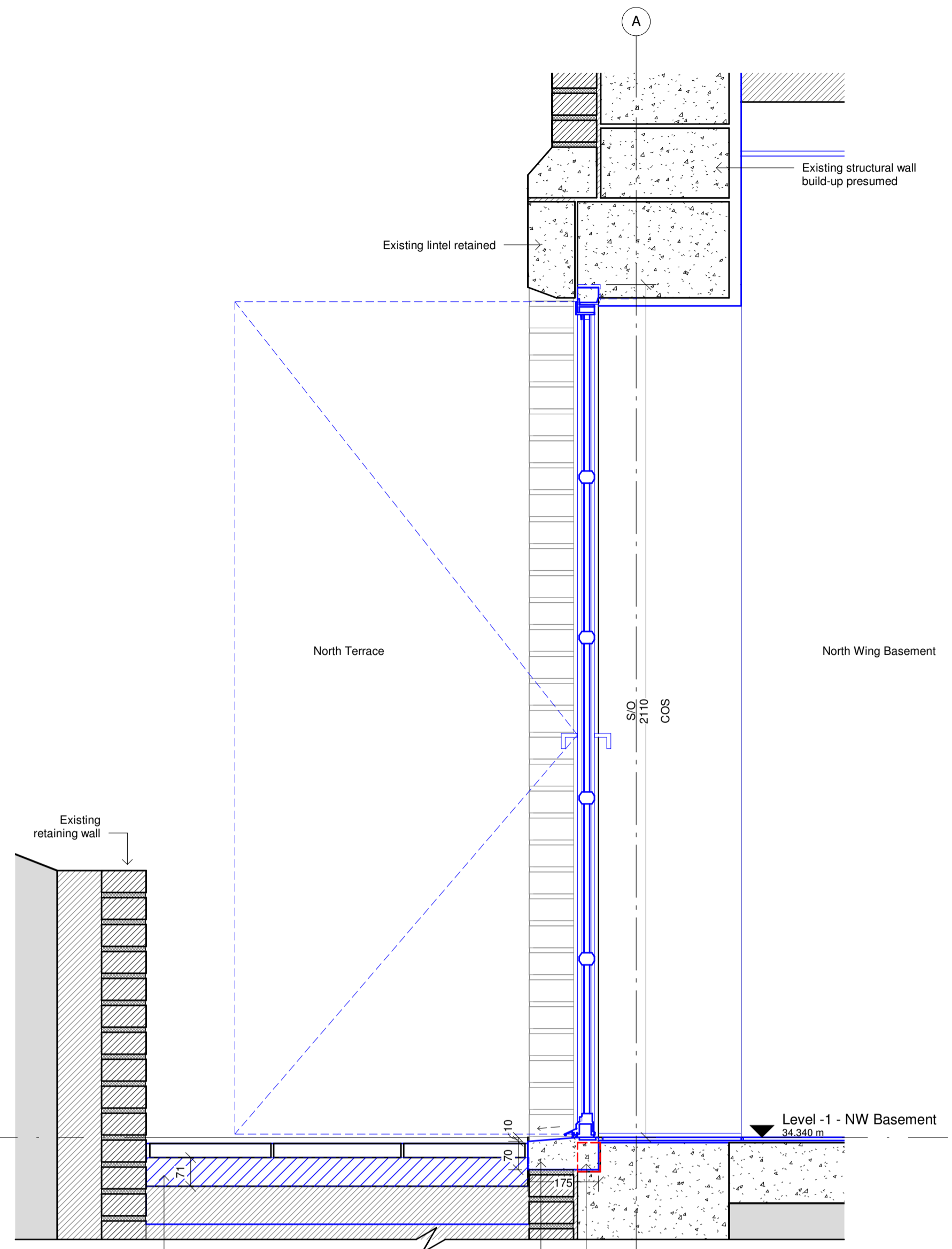
Rev	Description	By	Chk	Date
C	Planning Condition Discharge	HBA	RN	16.04.19
A	Tender Issue	HBA	RN	08.02.19

The Danish Church
 Title
 North Wing - Proposed Crittall Door - D.01 - Details

Project No.
85331
 Status
Stage 4 - TENDER
 Scale @ A1
 1 : 10
 Date
 08/02/19
 Revision
 C
 Drawing Number
85331-CFM-21-605

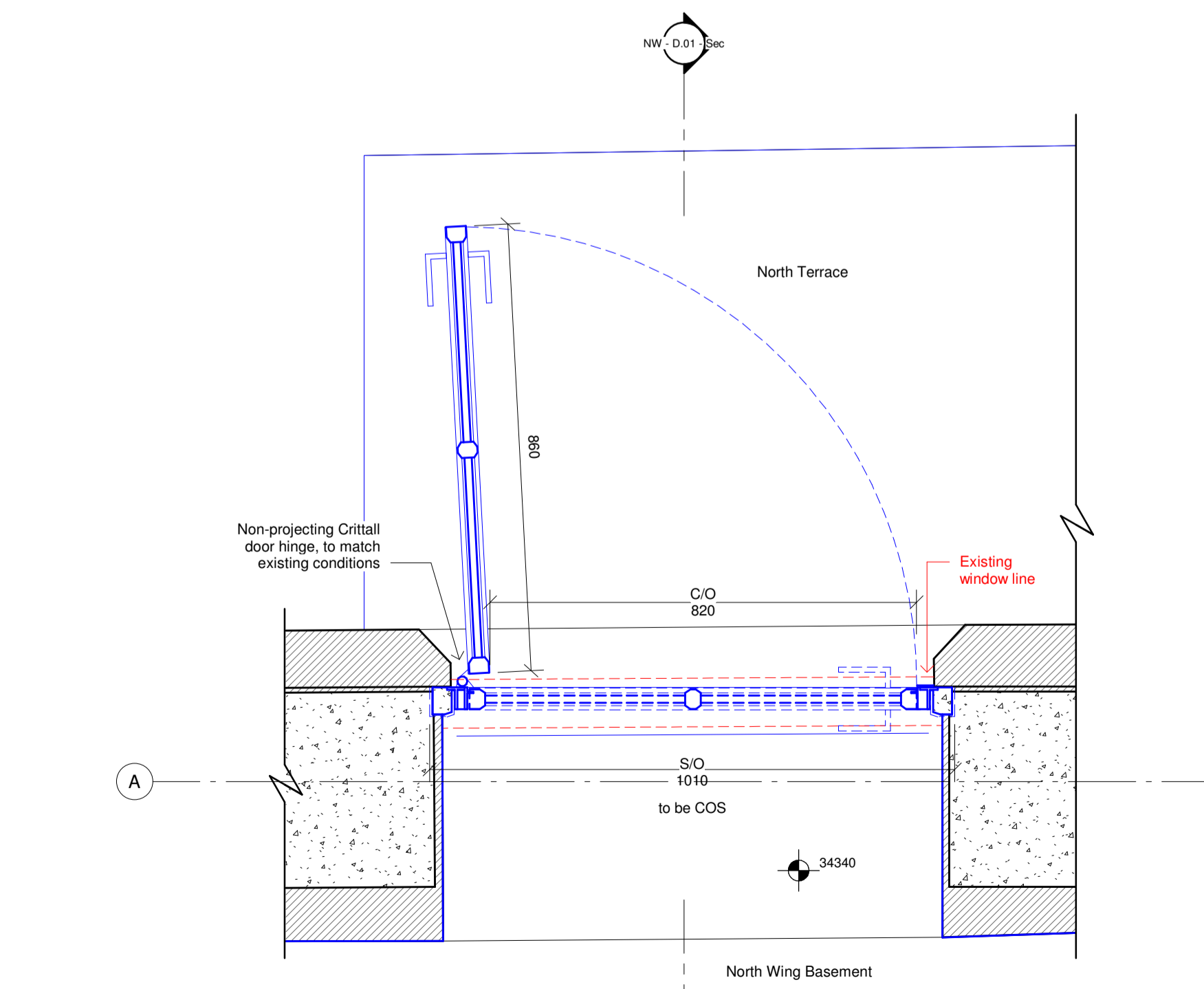


NW - D.01 Ele
 1:10



NW - D.01 - Sec
 1:10

Build up existing terrace level and lay reclaimed paving stones from South Garden
 Pre-cast concrete threshold with sloped edge to sunken terrace
 Cut back existing below-ground wall to lay threshold piece



NW - D.01 Plan
 1:10

D.01

Description	Crittall W20 double glazed door with weld on non-projecting hinges. Provides new second means of escape to North Wing basement.
Approx. structural opening size	1010 x 2110mm
Clear opening width	820mm
Threshold / sill	Sloped pre-cast concrete threshold, as shown
Finishes	Hot-dip galvanised post fabrication to prevent corrosion. Duralife polyester powder coated - RAL to match existing adjacent.
Glazing	Double-glazed - 4mm Low E Toughened safety glass
Ironmongery	Crittall standard bronze handles. Flush security bolts inset, top and bottom.

Existing Condition

