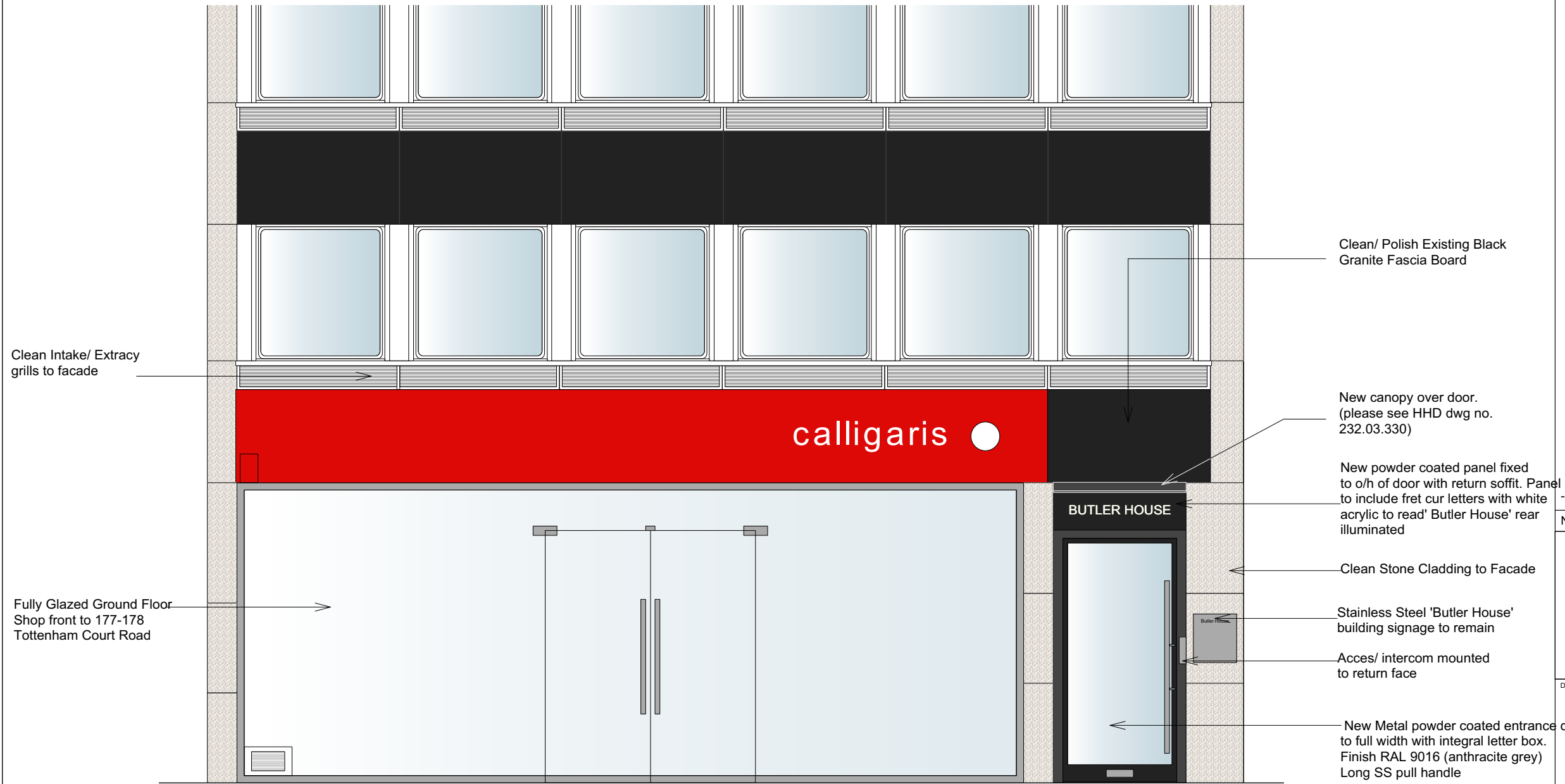


Site Measurements not to be taken from drawings.
 Contractor to confirm all dimensions.
 HHD not liable for seeking relevant planning authority
 permissions (including LBC) unless specifically directed by
 the client



Clean Intake/ Extracy
grills to facade

Fully Glazed Ground Floor
Shop front to 177-178
Tottenham Court Road

Clean/ Polish Existing Black
Granite Fascia Board

New canopy over door.
(please see HHD dwg no.
232.03.330)

New powder coated panel fixed
to o/h of door with return soffit. Panel
to include fret cur letters with white
acrylic to read 'Butler House' rear
illuminated

Clean Stone Cladding to Facade

Stainless Steel 'Butler House'
building signage to remain

Acces/ intercom mounted
to return face

New Metal powder coated entrance
door
to full width with integral letter box.
Finish RAL 9016 (anthracite grey)
Long SS pull handle

Proposed Exterior Elevation
Scale 1:50

No.	Date	Revisions / Submissions	Revised by
-	12.04.19	First Issue	JB



Design Firm
HamburyHird Design Ltd.
 50-52 Wellsway
 Bath
 BA2 4SA
 Telephone: 01225 336004

Stage
Planning

Project Title
**Butler House, 177-178 Tottenham
 Court Road**
 London, W1

Drawing Title
Proposed Exterior Elevation

Project Manager	Project ID	232.03
Drawn By	CAD File Name	232.03.211 Proposed External Facade -Butler House 177-178 Tottenham Court Road.vwx
Reviewed By	Drawing No.	232.03.211
Date	FEB 2019	
Scale	1:50 @ A3	

Proposed Exterior Elevation
 Butler House, 177-178 Tottenham Court Road
 1:50 @ A3