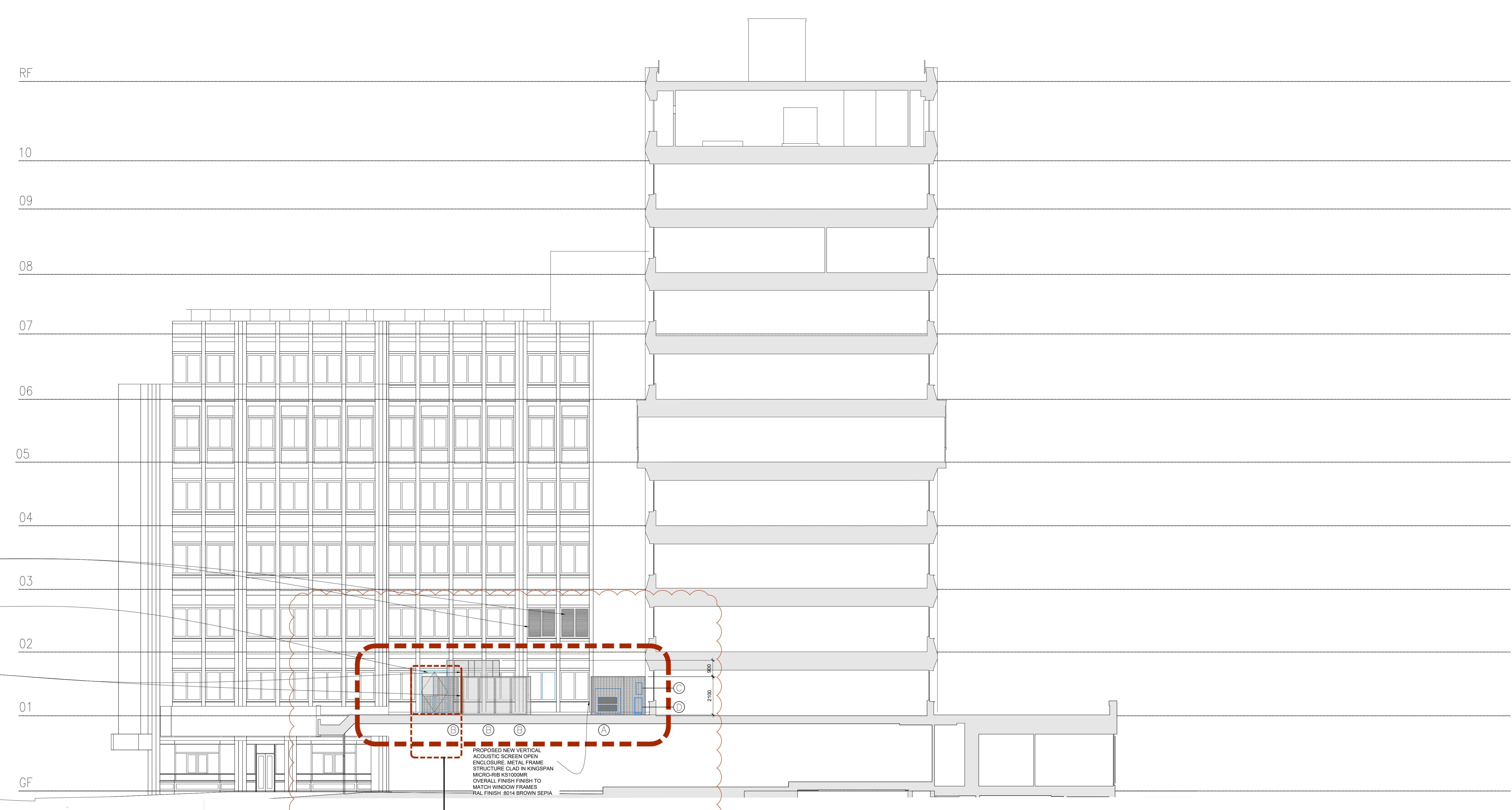


**LOCATION PLAN**  
NTS



PROPOSED FRESH INTAKE VIA  
ACOUSTIC LOUVER  
MIN AREA 5M2 WITH 50% FREE AREA  
TO REPLACE 2 EXISTING WINDOW SETS  
FINISHES TO MATCH REPLACEMENTS  
WINDOWS

PROPOSED NEW DOUBLE ACCESS  
DOOR TO REPLACE EXISTING WINDOW BAY  
PREVIOUSLY APPROVED UNDER APPLICATION  
2018/188P.

ACOUSTIC ENCLOSURE WITH ACOUSTIC PANEL ROOF  
& 3x CONDENSER DISCHARGE ATTENUATORS  
METAL FRAME CONSTRUCTION WITH SUPPORTING  
FRAMEWORK FOR ROOF & ATTENUATORS  
3 SIDES WITH HALF HEIGHT (UPPER SECTION)  
ACOUSTIC LOUVERES - TO REAR AND SIDES  
WITH LOWER SECTION DOOR PANEL SECTION IN  
KINGSPAN MICRO-RIB KS1000MR  
1 SIDE WITH FULL HEIGHT LOUVERES - FRONT FACE  
SEE ATTACHED ENCLOSURE DOCUMENTS FOR  
PRODUCT SPEC & ACOUSTIC PROPERTIES  
OVERALL FINISH FINISH TO MATCH WINDOW FRAMES  
RAL FINISH 9014 BROWN SEPIA  
FORMED ENCLOSURE AROUND 3x AHU KITCHEN  
CONDENSER (TYPE B)

PROPOSED NEW VERTICAL  
ACOUSTIC SCREEN OPEN  
ENCLOSURE METAL FRAME  
STRUCTURE CLAD IN KINGSPAN  
MICRO-RIB KS1000MR  
OVERALL FINISH FINISH TO  
MATCH WINDOW FRAMES  
RAL FINISH 9014 BROWN SEPIA

## SOUTH SECTIONAL ELEVATION

**LEGEND**

Ⓐ KITCHEN SPECIALIST CONDENSER FOR COLDROOMS ETC  
DIM. 1390Lx683Dx1345H  
WT. ---  
SOUND LEVEL (LpA @10m) 43 dB(A)

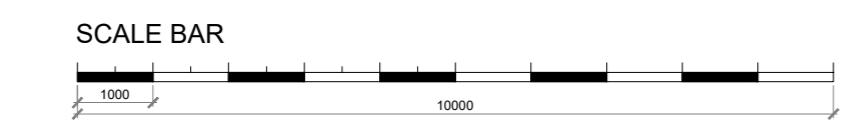
Ⓑ KITCHEN SUPPLY AHU CONDENSER  
DIM. 990Lx790Dx1635H  
WT. 219KG

HZ	63	125	250	500	1000	2000	4000	8000
DB	41	43	51	52	50	47	40	30

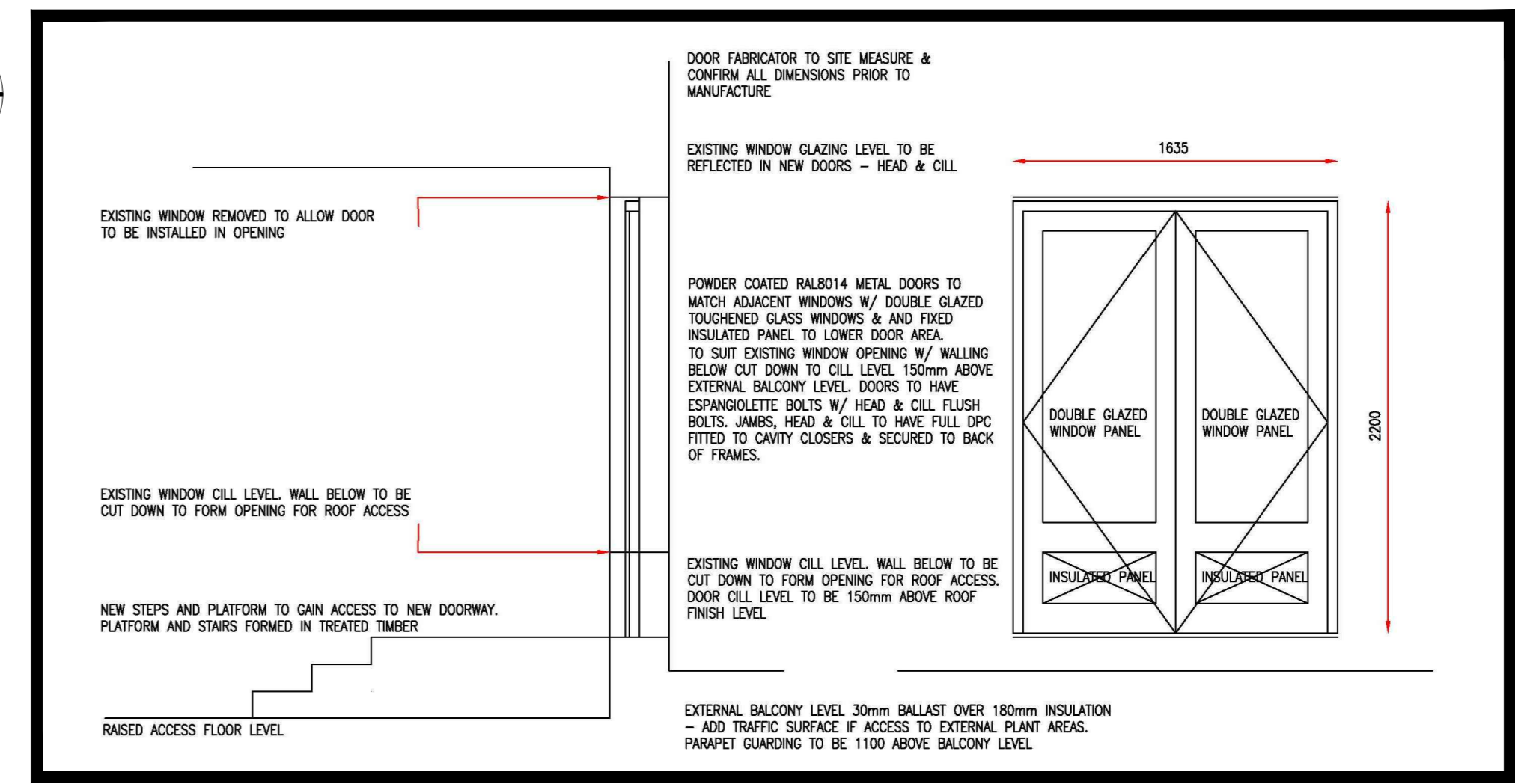
Ⓒ KITCHEN OFFICE A/C UNIT CONDENSER  
DIM. 870Lx320Dx655H  
WT. 45KG  
SOUND POWER - 63 dBA

Ⓓ KITCHEN SPECIALIST CONDENSER OF FREEZER  
DIM. 1029Lx424Dx840H  
WT. 81KG  
SOUND LEVEL - 40 dB(A)

**REVISION A (2019-03-28)**  
ORIGINAL DRAWING ISSUE: 1124-ALL-PA-07.1  
REPLACE BY REVISED DRAWING 1124-ALL-0A-07.1.A



detail  
01



sketch detail 01 - Proposed Replacement Access Doors

Rev	Description	Drawn By	Date
A	REVISED ISSUE	NJ	28.03.19
-	Drawing first produced	AN	22.08.18

Client Contact  
**WeWork**  
125 Shaftesbury Avenue

Account Manager  
Designer/ Senior Tech. Designer / Project Manager  
N. HASSEY (P. HUGO L. GRAYLAND)

Scale: 1:100 @ A0  
Drawn By: NJ  
First Drawing Date: 22/08/18

Contract Number: 1124  
Floor: ALL  
Detail: PA-07.1  
Revision: A

