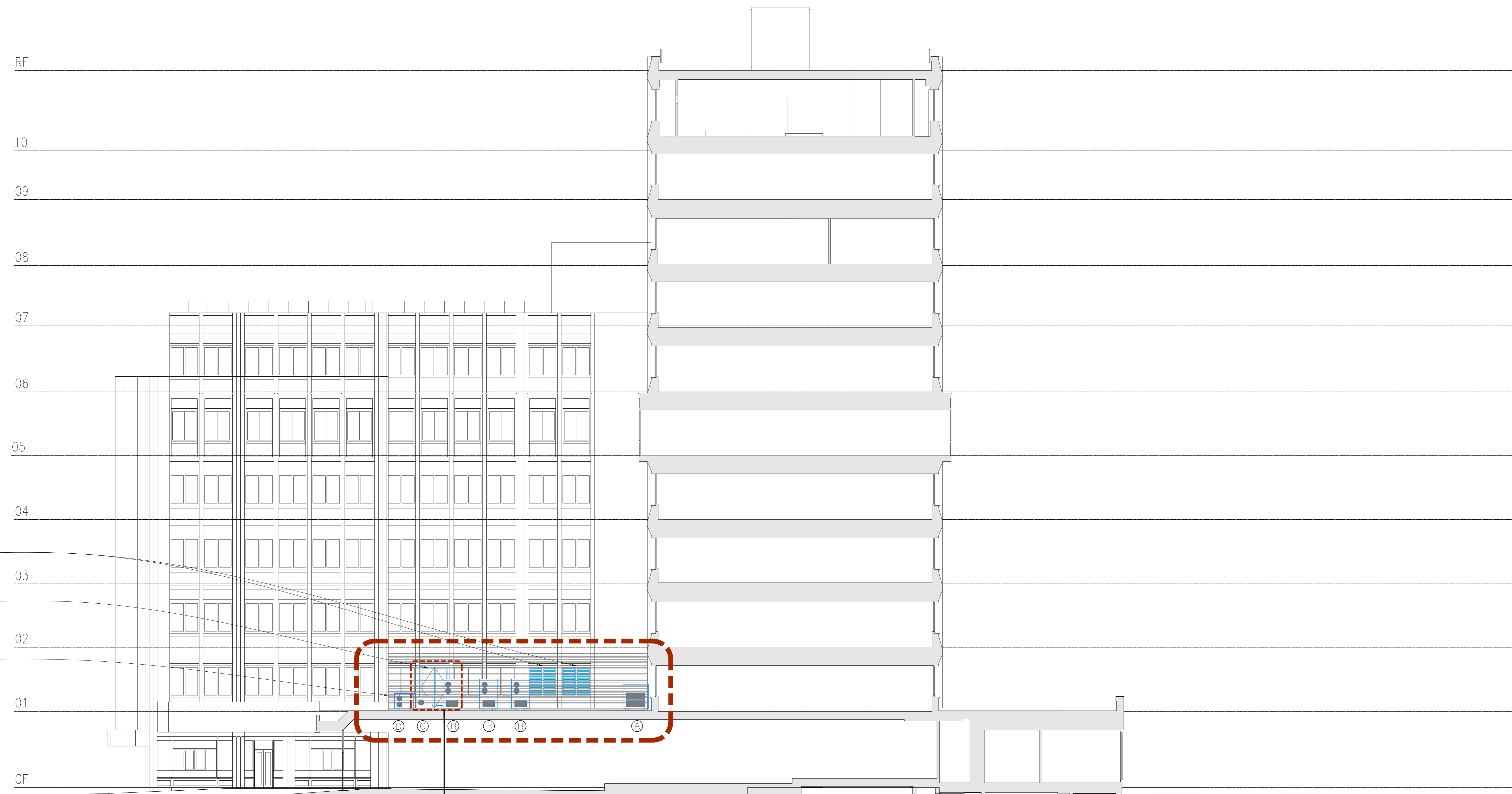


LOCATION PLAN
NTS



PROPOSED FRESH INTAKE VIA
ACOUSTIC LOUVER
MIN AREA 0.02 WITH 50% FREE AREA
TO REPLACE EXISTING WINDOW SETS
FINISHES TO MATCH REPLACEMENTS
WINDOWS

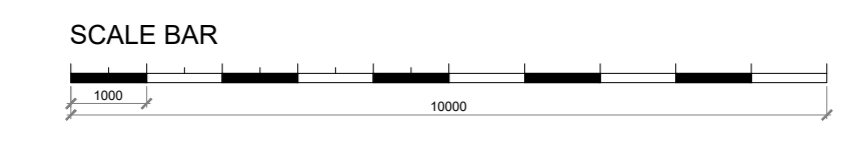
PROPOSED NEW DOUBLE ACCESS
DOOR TO REPLACE EXISTING WINDOW BAY
FINISHES MATERIALS TO MATCH
EXISTING REPLACEMENT WINDOWS
SEE TYPICAL DOOR DETAIL

PROPOSED NEW VERTICAL
SCREEN FINAL DETAILS
INCLUDING ACOUSTIC
PROPERTIES TO BE CONFIRMED

- LEGEND**
- Ⓐ KITCHEN SPECIALIST CONDENSER FOR COLDROOMS ETC
DIM. 1390Lx683Dx1345H
WT. ---
SOUND LEVEL (LpA @10m) 43 dB(A)
 - Ⓑ KITCHEN SUPPLY AHU CONDENSER
DIM. 990Lx790Dx1635H
WT. 219KG

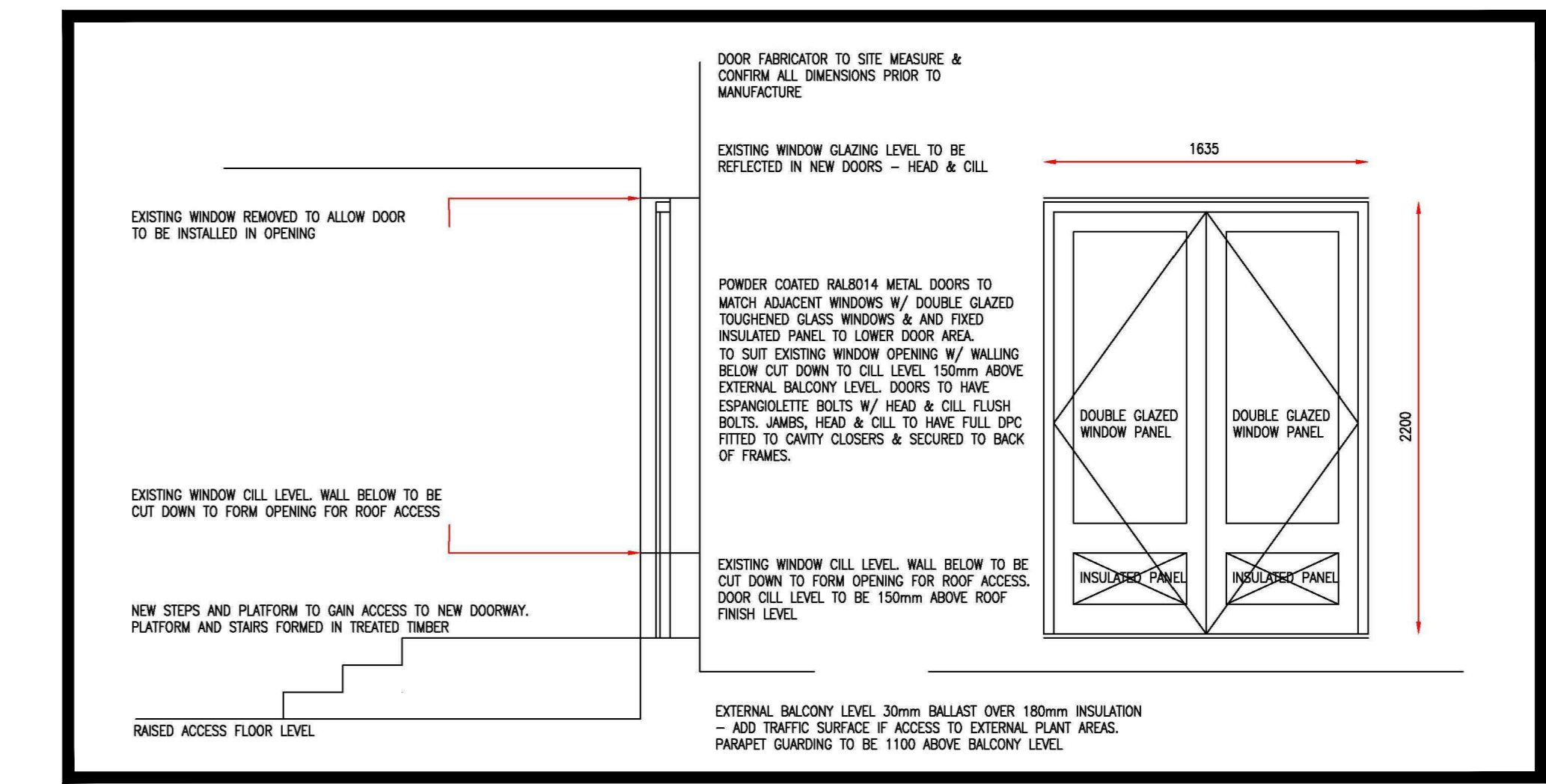
HZ	63	125	250	500	1000	2000	4000	8000
DB	41	43	51	52	50	47	40	30
 - Ⓒ KITCHEN OFFICE A/C UNIT CONDENSER
DIM. 870Lx320Dx655H
WT. 45KG
SOUND POWER - 63 dBA
 - Ⓓ KITCHEN SPECIALIST CONDENSER OF FREEZER
DIM. 1029Lx424Dx840H
WT. 81KG
SOUND LEVEL - 40 dB(A)

SOUTH SECTIONAL ELEVATION



scale : nts

detail
01



sketch detail 01 - Proposed Replacement Access Doors

Rev	Descriptive amendments	Drawn by	Date
-	Drawing first produced	AN	22.08.18
Planning Application			
Client			
WeWork			
Client Contact			
Site Address			
125 Shaftesbury Avenue			
Drawing Title			
South Sectional Elevation - Proposed			
Account Manager			
Designer/ Senior Tech. Designer / Project Manager			
N. HASSEY / J. VAUGHAN / L. GRAYLAND			
Scale	1:100 @ A0	Drawn By	First Drawing Date
		NJ	22/08/18
Contract Number	1124	Floor	Detail
		ALL	PA-07.1
			Revision
			-

