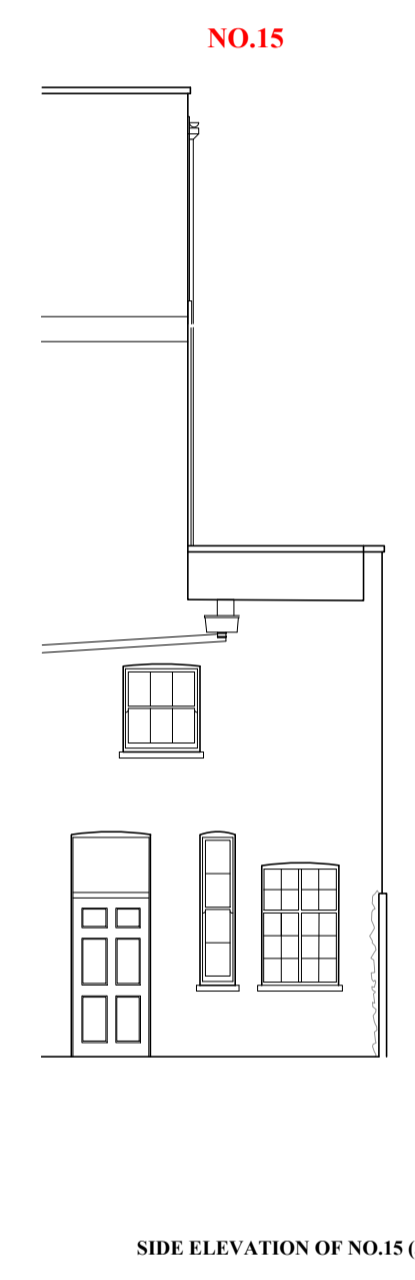




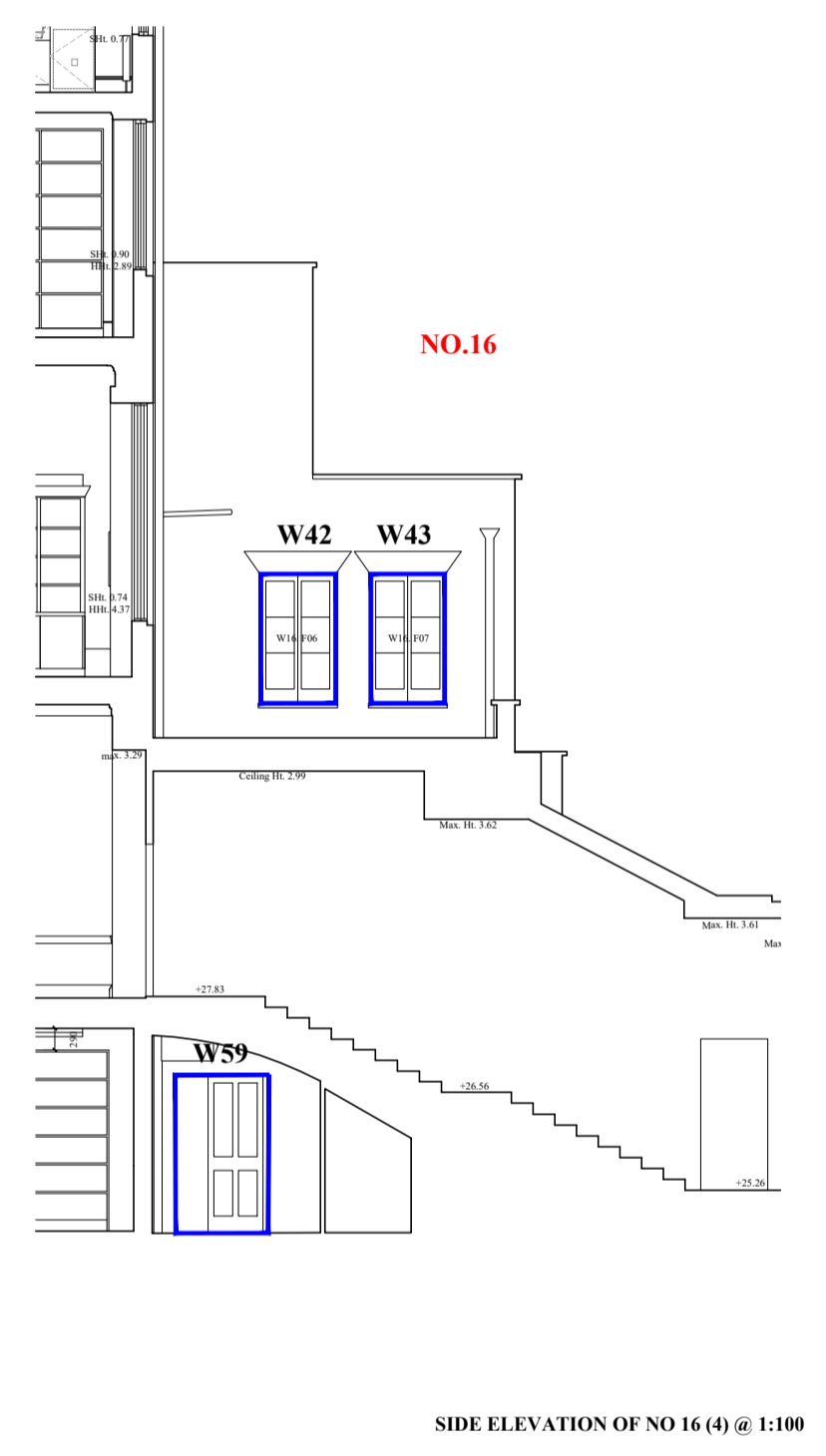
FRONT ELEVATION (1) @ 1:100



REAR ELEVATION (2) @ 1:100



SIDE ELEVATION OF NO.15 (3) @ 1:100



SIDE ELEVATION OF NO.16 (4) @ 1:100

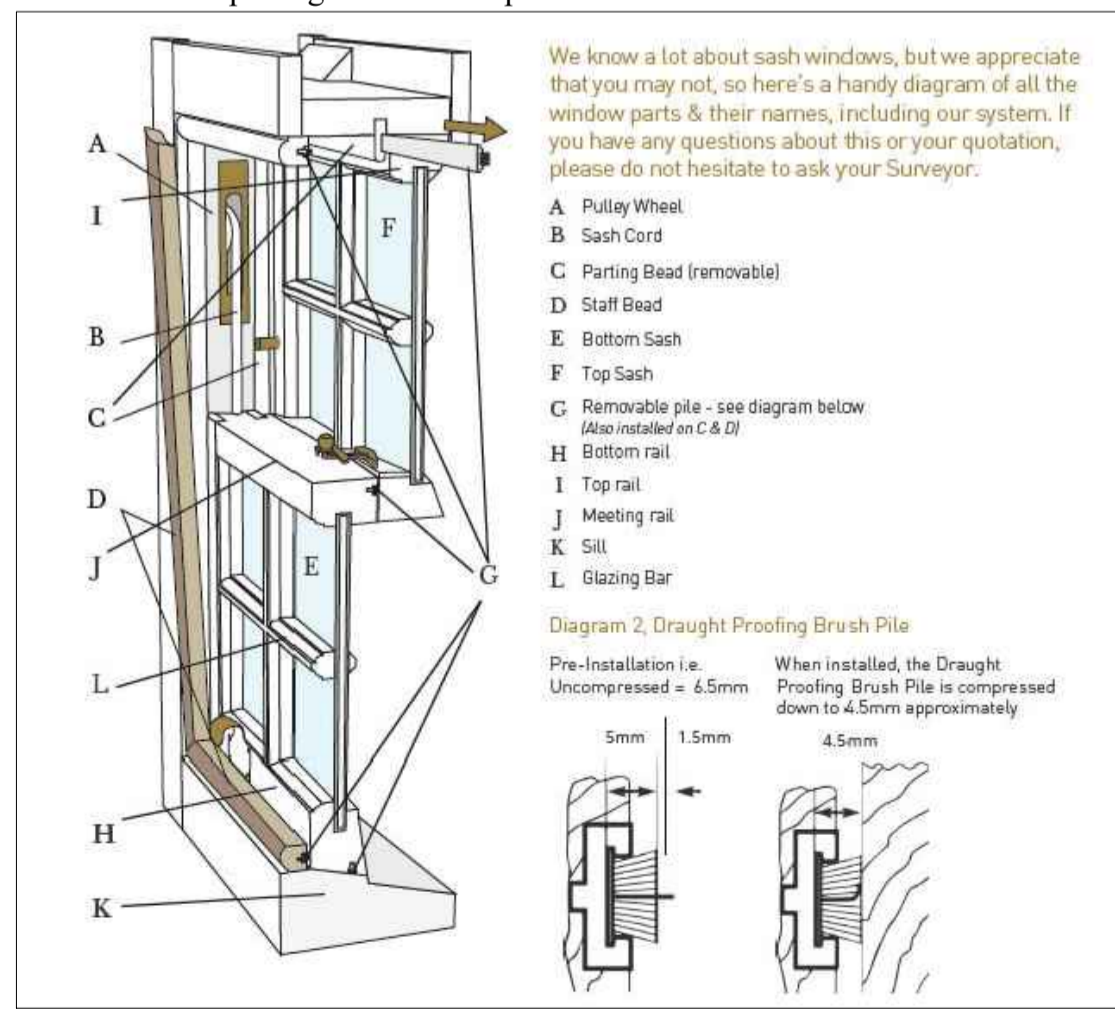
REVISIONS:

**KEY: SCOPE OF WINDOW REFURBISHMENT**

- Draught proofing system and overhaul window
- Draught proofing system and overhaul window  
New internal hardwood sill
- Draught proofing system and overhaul window  
New lower sash, single glazed, in hardwood to match existing (SEE DRAWING 211)

**TYPICAL DRAUGHT PROOFING DETAIL**

Note: wooden parting beads to be specified.

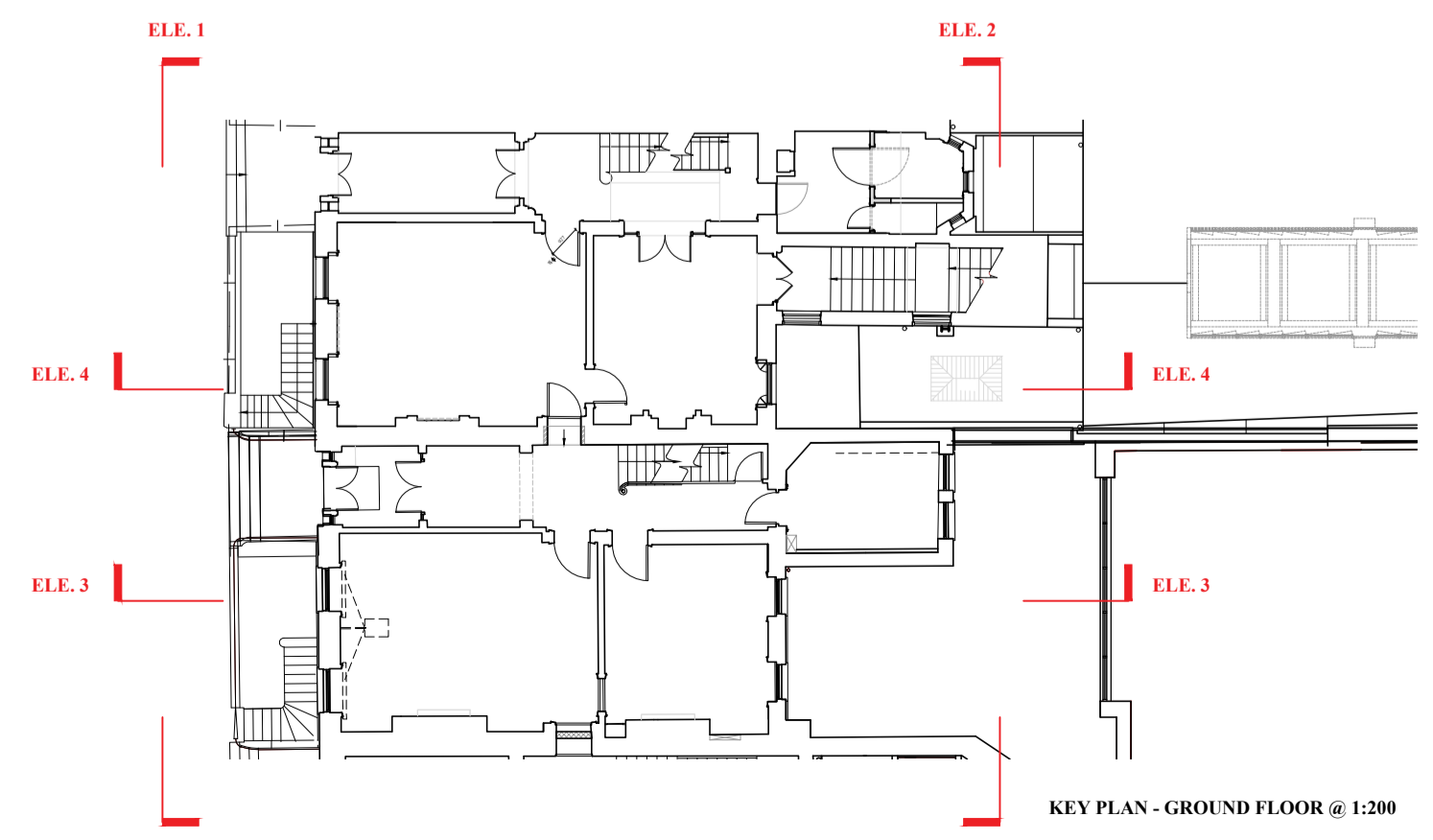


**Draught proofing and overhauling scope to include:**

- Remove bottom sash and set aside
- Remove parting beads and clear away
- Remove top sash and set aside
- Plane down/scrape down where required to the sashes and box frame to create the gaps around the sashes for free movement
- Prime bare timbers created by supplier
- Free up and oil pulley wheels
- Re-hang and re-balance top sash on new sash cords
- Fit draft u-section to sides and top of box frame fitted with screws and mastic seal
- Rout out a special groove into the bottom sash meeting rail and bottom rail and prime
- Fit pile carriers into the bottom sash meeting rail and bottom rail.
- Re-hang & re-balance bottom sash on new sash cords
- Fit parting bead with brush seals into the u-section.
- Fit brush seals into the pile carriers to the bottom sash meeting rail & bottom rail.
- Fit new staff beads in correct position with brush seals inserted
- Check window for correct operation.

**Notes:**

- Any repairs to glazing bars and rails are to match those existing.
- Any necessary glass replacements to damaged glass will be replaced in float glass to match existing.



KEY PLAN - GROUND FLOOR @ 1:200

PAUL MELLON CENTRE  
15 & 16 BEDFORD SQUARE

PROPOSED  
WINDOW WORKS

DRAWING NO:  
**210**

SCALE: 1:100@A1, 1:200@A3      DATE: 16.04.19

WRIGHT & WRIGHT ARCHITECTS