

Taxus baccata hedge



Green wall

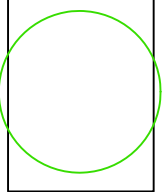


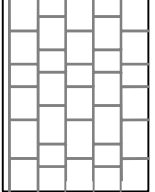
Lonicera purpusii

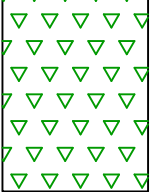


Sarcococca hookeriana

KEY

 Existing trees / vegetation

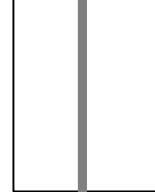
 Proposed porcelain paving

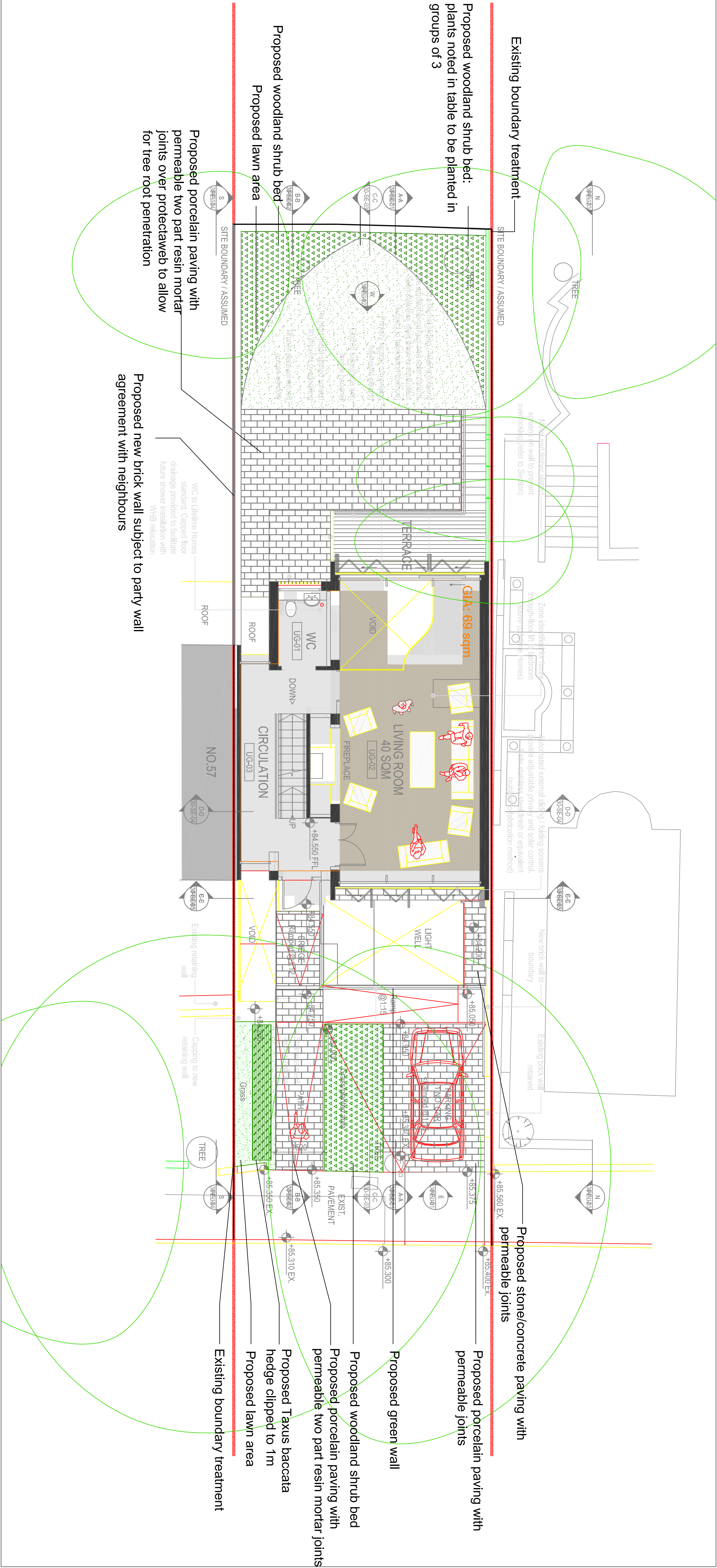
 Proposed mixed shrub bed

 Proposed lawn area

 Proposed Taxus baccata hedge

 Existing boundary treatment

 Proposed new brick wall



Outline Specification Notes

General
Plant material all plants shall conform to the relevant british standards BS 3936 and BS 5326. All plants shall be true to form, type, size, healthy, vigorous, pest and weed free. No substitutes in size or type shall be made without written consent of the landscape architect.

Proposed Ornamental Shrub / Perennial Planting / Ferns

To be planted in a minimum of 300mm depth approved topsoil to BS 3882:2007 'Multipurpose' in the first available planting season after construction. All shrubs are to be planted as container stock unless otherwise specified (3-25L), all stock is to be well rooted into the container. All shrubs are to be planted with a slow release organic fertilizer. A minimum of 50 mm approved ornamental grade bark mulch is to be applied to planting areas unless stated otherwise. Bark only to be applied for the first season around ground cover plants.

Shrub Planting

Shrubs shall be planted into 450mm of topsoil. Apply a slow release fertilizer such as Emag at 70g/sq.m or similar approved and work into the topsoil. Plant material shall be planted into pits 75mm wider than the root spread. The pits shall be backfilled gently, firming-in around the roots, ensuring that all plants are finished at their original soil levels. All plants shall be watered-in thoroughly immediately after planting. Allow for an amendment to the fertilizer specification as indicated by the topsoil analysis. Shrub beds shall be mulched with a minimum 50mm layer of composted bark, with the depth topped up at end of maintenance period.

Planting Guidelines: All planting and landscape operations should comply with the requirements specified in BS 3936:1992 'Nursery Stock (Part One)' and BS 4428:1989 'Code of Practice for General Landscape Operations (excluding hard surfaces)' and BS 8545: 'From Nursery to Independence in the Landscape'

- All reused existing or imported topsoil shall be tested by approved Topsoil Analyst to conform to BS 3882:2007 'Specification for Topsoil and Requirements for Use'. Any required amelioration or soil improvement to be carried out in line with Analyst's report.

- Topsoil storage mounds shall be in accordance with NBS landscape specification - locations are to be confirmed with Contractor.

- All fertilizers are to be applied or supervised by qualified staff to avoid the action of phytotoxicity.

Maintenance Notes - Overview

All landscaped areas are to be maintained for 24 months following practical completion of the phase or until the plants have established, all tree planting to be maintained for 36 months.

Planting to be protected from mammal and human damage by stock proof fencing.

All planted areas to be kept clear of weeds at all times throughout maintenance period.

Planted areas to be forked through regularly to keep soil loose and aerated.

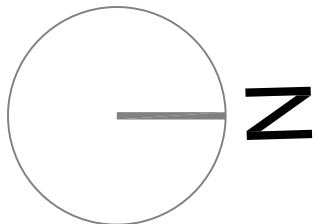
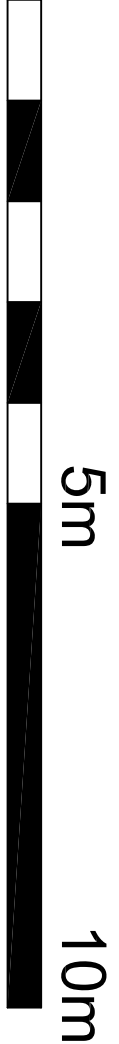
All litter and debris to be removed from landscaped areas and carted off site.

Plants pruned as instructed by the Landscape Architect to promote healthy growth and to remove dead and diseased wood.

Watering as required to maintain healthy growth. (allow for 12No. watering minimum).

Any species that dies or fails to establish in the first five years should be replaced by an identical species, or alternative species as agreed otherwise.

Shrub Beds	Number	Density	Height	Girth	Pot Size
Lonicera purpusii	18	3m ²			3lt
Sarcococca hookeriana var humilis	18	3m ²			3lt
Ruscus aculeatus	18	4m ²			3lt
Euphorbia amygdaloides var robbiae	18	3m ²			3lt
Cornus alternifolia	18	3m ²			3lt
Choisya ternata	18	3m ²			3lt



SPECIFICATION

- All planting stock and trees should comply & be carried out in accordance to the following:
 - Following: 'Companion Practice' note 8.
 - Native species from local stock.
 - Native trees and shrubs certified as British Native plant stock.
 - Horticultural Trade Association National Plant specification.
 - Planting preparation, handling, planting & maintenance to the CPSE Code for Best Practice.
 - Importing and Establishing plants.
 - Imported topsoil to be mounded towards the centre of each bed to allow for settlement.
 - On completion of planting, shrub beds mulched with 75mm consolidated mulch of medium grade woodchip or approved natural pine bark (see specification for details).
 - Existing trees and hedges to be protected in accordance with BS8837:2005 for the duration of the construction period.
 - Tree distances to be in accordance with engineers specification.
 - For more details on the spec see the accompanying notes.

Landmark Trees

Hidden House, 4th Floor, 57 Rathbone Place, London, W1T 1JU
Tel: 0207 851 4544 Mobile: 07812 899828
e-mail: info@landmarktrees.co.uk Web: www.landmarktrees.co.uk