

PLATE 1: EXCAVATION

ENVIRONMENTAL
SAMPLES:
-

TRIAL PIT 111 (TP111)



PHOTOGRAPHS &
SECTIONS

PROJECT:
CASTLEWOOD HOUSE

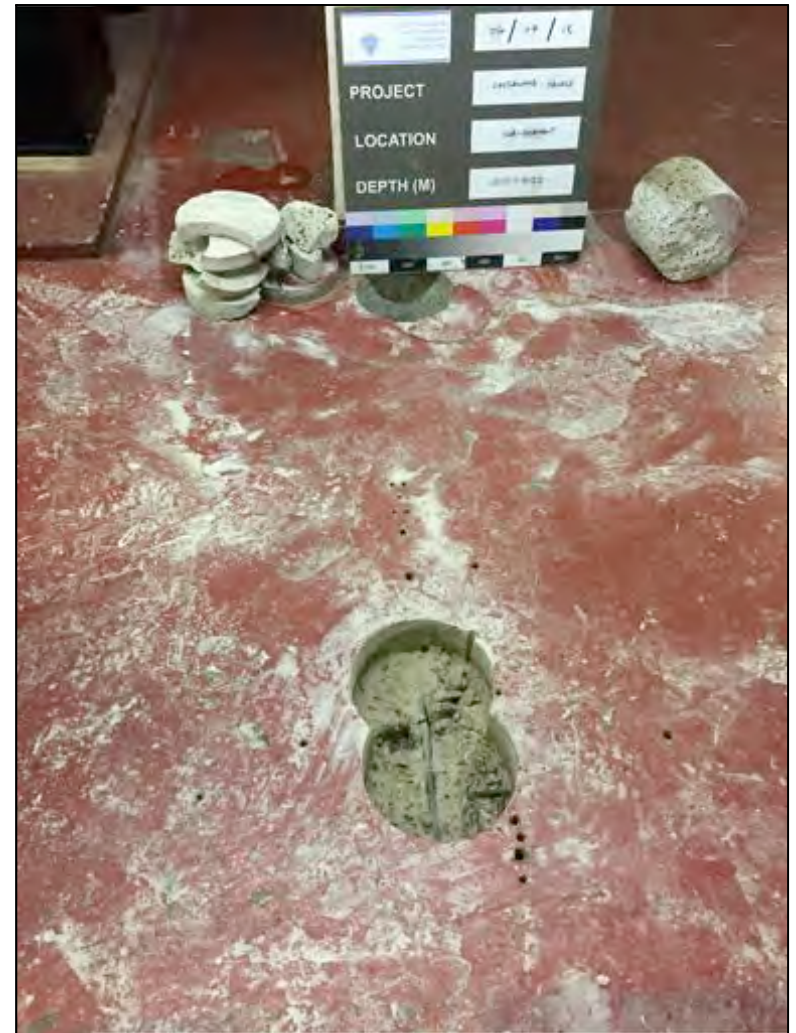
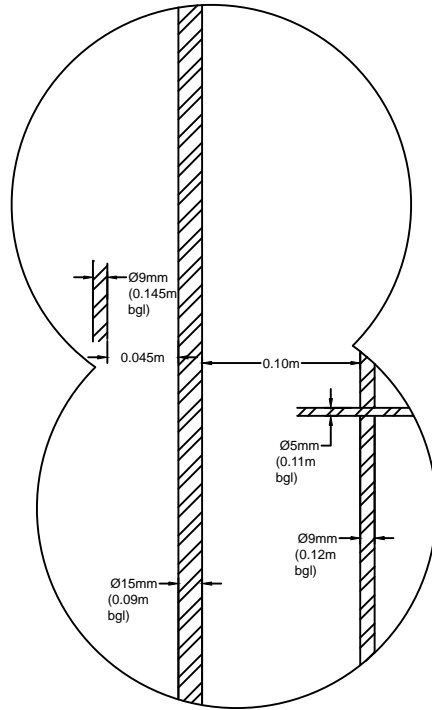


PLATE 1: EXCAVATION

ENVIRONMENTAL
SAMPLES:

SUB-BASEMENT



PHOTOGRAPHS &
SECTIONS

PROJECT:
CASTELWOOD HOUSE

APPENDICES

APPENDIX B CHEMICAL LABORATORY RESULTS



Philip Lewis
LMB Geosolutions Ltd
28 Dresden Road
London
N19 3BD

i2 Analytical Ltd.
7 Woodshots Meadow,
Croxley Green
Business Park,
Watford,
Herts,
WD18 8YS

t: 01923 225404
f: 01923 237404
e: reception@i2analytical.com

e: philip@lmbgeosolutions.com

Analytical Report Number : 18-90093

Project / Site name:	Castlewood House	Samples received on:	22/06/2018
Your job number:		Samples instructed on:	22/06/2018
Your order number:		Analysis completed by:	03/07/2018
Report Issue Number:	1	Report issued on:	03/07/2018
Samples Analysed:	10 soil samples		

Signed: _____

Jordan Hill
Reporting Manager
For & on behalf of i2 Analytical Ltd.

Standard Geotechnical, Asbestos and Chemical Testing Laboratory located at: ul. Pionierów 39, 41 -711 Ruda Śląska, Poland.

Accredited tests are defined within the report, opinions and interpretations expressed herein are outside the scope of accreditation.

Standard sample disposal times, unless otherwise agreed with the laboratory, are :

soils	- 4 weeks from reporting
leachates	- 2 weeks from reporting
waters	- 2 weeks from reporting
asbestos	- 6 months from reporting

Excel copies of reports are only valid when accompanied by this PDF certificate.



Analytical Report Number: 18-90093
 Project / Site name: Castlewood House

Lab Sample Number				987998	987999	988000	988001	988002
Sample Reference				BH102	BH102	TP101	TP101	TP101
Sample Number				None Supplied	None Supplied	None Supplied	None Supplied	None Supplied
Depth (m)				0.50	1.20	0.40	1.00	1.50
Date Sampled				21/06/2018	21/06/2018	21/06/2018	21/06/2018	21/06/2018
Time Taken				None Supplied	None Supplied	None Supplied	None Supplied	None Supplied
Analytical Parameter (Soil Analysis)	Units	Limit of detection	Accreditation Status					
Stone Content	%	0.1	NONE	24	< 0.1	36	< 0.1	< 0.1
Moisture Content	%	N/A	NONE	12	16	8.8	17	14
Total mass of sample received	kg	0.001	NONE	0.53	0.57	0.47	0.48	0.53

Asbestos in Soil	Type	N/A	ISO 17025	Not-detected	-	-	-	Not-detected
------------------	------	-----	-----------	--------------	---	---	---	--------------

General Inorganics

pH - Automated	pH Units	N/A	MCERTS	10.1	-	-	-	8.4
Water Soluble SO4 16hr extraction (2:1 Leachate Equivalent)	g/l	0.00125	MCERTS	0.33	-	-	-	0.035

Speciated PAHs

Naphthalene	mg/kg	0.05	MCERTS	-	-	-	< 0.05	-
Acenaphthylene	mg/kg	0.05	MCERTS	-	-	-	< 0.05	-
Acenaphthene	mg/kg	0.05	MCERTS	-	-	-	< 0.05	-
Fluorene	mg/kg	0.05	MCERTS	-	-	-	< 0.05	-
Phenanthrene	mg/kg	0.05	MCERTS	-	-	-	< 0.05	-
Anthracene	mg/kg	0.05	MCERTS	-	-	-	< 0.05	-
Fluoranthene	mg/kg	0.05	MCERTS	-	-	-	< 0.05	-
Pyrene	mg/kg	0.05	MCERTS	-	-	-	< 0.05	-
Benzo(a)anthracene	mg/kg	0.05	MCERTS	-	-	-	< 0.05	-
Chrysene	mg/kg	0.05	MCERTS	-	-	-	< 0.05	-
Benzo(b)fluoranthene	mg/kg	0.05	MCERTS	-	-	-	< 0.05	-
Benzo(k)fluoranthene	mg/kg	0.05	MCERTS	-	-	-	< 0.05	-
Benzo(a)pyrene	mg/kg	0.05	MCERTS	-	-	-	< 0.05	-
Indeno(1,2,3-cd)pyrene	mg/kg	0.05	MCERTS	-	-	-	< 0.05	-
Dibenz(a,h)anthracene	mg/kg	0.05	MCERTS	-	-	-	< 0.05	-
Benzo(ghi)perylene	mg/kg	0.05	MCERTS	-	-	-	< 0.05	-

Total PAH

Speciated Total EPA-16 PAHs	mg/kg	0.8	MCERTS	-	-	-	< 0.80	-
-----------------------------	-------	-----	--------	---	---	---	--------	---

Heavy Metals / Metalloids

Arsenic (aqua regia extractable)	mg/kg	1	MCERTS	6.5	8.4	-	17	9.5
Boron (water soluble)	mg/kg	0.2	MCERTS	0.8	0.2	-	0.9	0.8
Cadmium (aqua regia extractable)	mg/kg	0.2	MCERTS	< 0.2	< 0.2	-	< 0.2	< 0.2
Chromium (aqua regia extractable)	mg/kg	1	MCERTS	15	11	-	15	30
Copper (aqua regia extractable)	mg/kg	1	MCERTS	17	8.8	-	58	36
Lead (aqua regia extractable)	mg/kg	1	MCERTS	68	6.6	-	100	31
Mercury (aqua regia extractable)	mg/kg	0.3	MCERTS	2.1	< 0.3	-	< 0.3	< 0.3
Nickel (aqua regia extractable)	mg/kg	1	MCERTS	13	13	-	19	24
Selenium (aqua regia extractable)	mg/kg	1	MCERTS	< 1.0	< 1.0	-	1.1	< 1.0
Zinc (aqua regia extractable)	mg/kg	1	MCERTS	69	23	-	54	41



Analytical Report Number: 18-90093
 Project / Site name: Castlewood House

Lab Sample Number	987998				987999				988000				988001				988002			
Sample Reference	BH102				BH102				TP101				TP101				TP101			
Sample Number	None Supplied				None Supplied				None Supplied				None Supplied				None Supplied			
Depth (m)	0.50				1.20				0.40				1.00				1.50			
Date Sampled	21/06/2018				21/06/2018				21/06/2018				21/06/2018				21/06/2018			
Time Taken	None Supplied				None Supplied				None Supplied				None Supplied				None Supplied			
Analytical Parameter (Soil Analysis)	Units	Limit of detection	Accreditation Status																	

Monoaromatics

Compound	Units	Limit of detection	Accreditation Status	987998	987999	988000	988001	988002
Benzene	µg/kg	1	MCERTS	< 1.0	-	-	-	< 1.0
Toluene	µg/kg	1	MCERTS	< 1.0	-	-	-	< 1.0
Ethylbenzene	µg/kg	1	MCERTS	< 1.0	-	-	-	< 1.0
p & m-xylene	µg/kg	1	MCERTS	< 1.0	-	-	-	< 1.0
o-xylene	µg/kg	1	MCERTS	< 1.0	-	-	-	< 1.0
MTBE (Methyl Tertiary Butyl Ether)	µg/kg	1	MCERTS	< 1.0	-	-	-	< 1.0

Petroleum Hydrocarbons

Parameter	Units	Limit of detection	Accreditation Status	987998	987999	988000	988001	988002
TPH C10 - C40	mg/kg	10	MCERTS	-	< 10	-	< 10	-
TPH-CWG - Aliphatic >EC5 - EC6	mg/kg	0.001	MCERTS	< 0.001	-	-	-	< 0.001
TPH-CWG - Aliphatic >EC6 - EC8	mg/kg	0.001	MCERTS	< 0.001	-	-	-	< 0.001
TPH-CWG - Aliphatic >EC8 - EC10	mg/kg	0.001	MCERTS	< 0.001	-	-	-	< 0.001
TPH-CWG - Aliphatic >EC10 - EC12	mg/kg	1	MCERTS	< 1.0	-	-	-	< 1.0
TPH-CWG - Aliphatic >EC12 - EC16	mg/kg	2	MCERTS	3.5	-	-	-	< 2.0
TPH-CWG - Aliphatic >EC16 - EC21	mg/kg	8	MCERTS	< 8.0	-	-	-	< 8.0
TPH-CWG - Aliphatic >EC21 - EC35	mg/kg	8	MCERTS	47	-	-	-	< 8.0
TPH-CWG - Aliphatic (EC5 - EC35)	mg/kg	10	MCERTS	56	-	-	-	< 10
TPH-CWG - Aromatic >EC5 - EC7	mg/kg	0.001	MCERTS	< 0.001	-	-	-	< 0.001
TPH-CWG - Aromatic >EC7 - EC8	mg/kg	0.001	MCERTS	< 0.001	-	-	-	< 0.001
TPH-CWG - Aromatic >EC8 - EC10	mg/kg	0.001	MCERTS	< 0.001	-	-	-	< 0.001
TPH-CWG - Aromatic >EC10 - EC12	mg/kg	1	MCERTS	< 1.0	-	-	-	< 1.0
TPH-CWG - Aromatic >EC12 - EC16	mg/kg	2	MCERTS	3.0	-	-	-	< 2.0
TPH-CWG - Aromatic >EC16 - EC21	mg/kg	10	MCERTS	< 10	-	-	-	< 10
TPH-CWG - Aromatic >EC21 - EC35	mg/kg	10	MCERTS	54	-	-	-	< 10
TPH-CWG - Aromatic (EC5 - EC35)	mg/kg	10	MCERTS	64	-	-	-	< 10



Analytical Report Number: 18-90093
 Project / Site name: Castlewood House

Lab Sample Number	987998			987999		988000		988001		988002	
Sample Reference	BH102			BH102		TP101		TP101		TP101	
Sample Number	None Supplied			None Supplied		None Supplied		None Supplied		None Supplied	
Depth (m)	0.50			1.20		0.40		1.00		1.50	
Date Sampled	21/06/2018			21/06/2018		21/06/2018		21/06/2018		21/06/2018	
Time Taken	None Supplied			None Supplied		None Supplied		None Supplied		None Supplied	
Analytical Parameter (Soil Analysis)	Units	Limit of detection	Accreditation Status								

VOCs

Compound	Units	Limit of detection	Accreditation Status	987998	987999	988000	988001	988002
Chloromethane	µg/kg	1	ISO 17025	-	-	< 1.0	-	-
Chloroethane	µg/kg	1	NONE	-	-	< 1.0	-	-
Bromomethane	µg/kg	1	ISO 17025	-	-	< 1.0	-	-
Vinyl Chloride	µg/kg	1	NONE	-	-	< 1.0	-	-
Trichlorofluoromethane	µg/kg	1	NONE	-	-	< 1.0	-	-
1,1-Dichloroethene	µg/kg	1	NONE	-	-	< 1.0	-	-
1,1,2-Trichloro 1,2,2-Trifluoroethane	µg/kg	1	ISO 17025	-	-	< 1.0	-	-
Cis-1,2-dichloroethene	µg/kg	1	MCERTS	-	-	< 1.0	-	-
MTBE (Methyl Tertiary Butyl Ether)	µg/kg	1	MCERTS	-	-	< 1.0	-	-
1,1-Dichloroethane	µg/kg	1	MCERTS	-	-	< 1.0	-	-
2,2-Dichloropropane	µg/kg	1	MCERTS	-	-	< 1.0	-	-
Trichloromethane	µg/kg	1	MCERTS	-	-	< 1.0	-	-
1,1,1-Trichloroethane	µg/kg	1	MCERTS	-	-	< 1.0	-	-
1,2-Dichloroethane	µg/kg	1	MCERTS	-	-	< 1.0	-	-
1,1-Dichloropropene	µg/kg	1	MCERTS	-	-	< 1.0	-	-
Trans-1,2-dichloroethene	µg/kg	1	NONE	-	-	< 1.0	-	-
Benzene	µg/kg	1	MCERTS	-	-	< 1.0	-	-
Tetrachloromethane	µg/kg	1	MCERTS	-	-	< 1.0	-	-
1,2-Dichloropropane	µg/kg	1	MCERTS	-	-	< 1.0	-	-
Trichloroethene	µg/kg	1	MCERTS	-	-	< 1.0	-	-
Dibromomethane	µg/kg	1	MCERTS	-	-	< 1.0	-	-
Bromodichloromethane	µg/kg	1	MCERTS	-	-	< 1.0	-	-
Cis-1,3-dichloropropene	µg/kg	1	ISO 17025	-	-	< 1.0	-	-
Trans-1,3-dichloropropene	µg/kg	1	ISO 17025	-	-	< 1.0	-	-
Toluene	µg/kg	1	MCERTS	-	-	< 1.0	-	-
1,1,2-Trichloroethane	µg/kg	1	MCERTS	-	-	< 1.0	-	-
1,3-Dichloropropane	µg/kg	1	ISO 17025	-	-	< 1.0	-	-
Dibromochloromethane	µg/kg	1	ISO 17025	-	-	< 1.0	-	-
Tetrachloroethene	µg/kg	1	NONE	-	-	< 1.0	-	-
1,2-Dibromoethane	µg/kg	1	ISO 17025	-	-	< 1.0	-	-
Chlorobenzene	µg/kg	1	MCERTS	-	-	< 1.0	-	-
1,1,1,2-Tetrachloroethane	µg/kg	1	MCERTS	-	-	< 1.0	-	-
Ethylbenzene	µg/kg	1	MCERTS	-	-	< 1.0	-	-
p & m-Xylene	µg/kg	1	MCERTS	-	-	< 1.0	-	-
Styrene	µg/kg	1	MCERTS	-	-	< 1.0	-	-
Tribromomethane	µg/kg	1	NONE	-	-	< 1.0	-	-
o-Xylene	µg/kg	1	MCERTS	-	-	< 1.0	-	-
1,1,2,2-Tetrachloroethane	µg/kg	1	MCERTS	-	-	< 1.0	-	-
Isopropylbenzene	µg/kg	1	MCERTS	-	-	< 1.0	-	-
Bromobenzene	µg/kg	1	MCERTS	-	-	< 1.0	-	-
n-Propylbenzene	µg/kg	1	ISO 17025	-	-	< 1.0	-	-
2-Chlorotoluene	µg/kg	1	MCERTS	-	-	< 1.0	-	-
4-Chlorotoluene	µg/kg	1	MCERTS	-	-	< 1.0	-	-
1,3,5-Trimethylbenzene	µg/kg	1	ISO 17025	-	-	< 1.0	-	-
tert-Butylbenzene	µg/kg	1	MCERTS	-	-	< 1.0	-	-
1,2,4-Trimethylbenzene	µg/kg	1	ISO 17025	-	-	< 1.0	-	-
sec-Butylbenzene	µg/kg	1	MCERTS	-	-	< 1.0	-	-
1,3-Dichlorobenzene	µg/kg	1	ISO 17025	-	-	< 1.0	-	-
p-Isopropyltoluene	µg/kg	1	ISO 17025	-	-	< 1.0	-	-
1,2-Dichlorobenzene	µg/kg	1	MCERTS	-	-	< 1.0	-	-
1,4-Dichlorobenzene	µg/kg	1	MCERTS	-	-	< 1.0	-	-
Butylbenzene	µg/kg	1	MCERTS	-	-	< 1.0	-	-
1,2-Dibromo-3-chloropropane	µg/kg	1	ISO 17025	-	-	< 1.0	-	-
1,2,4-Trichlorobenzene	µg/kg	1	MCERTS	-	-	< 1.0	-	-
Hexachlorobutadiene	µg/kg	1	MCERTS	-	-	< 1.0	-	-
1,2,3-Trichlorobenzene	µg/kg	1	ISO 17025	-	-	< 1.0	-	-



Analytical Report Number: 18-90093
 Project / Site name: Castlewood House

Lab Sample Number	987998				987999	988000	988001	988002
Sample Reference	BH102				BH102	TP101	TP101	TP101
Sample Number	None Supplied				None Supplied	None Supplied	None Supplied	None Supplied
Depth (m)	0.50				1.20	0.40	1.00	1.50
Date Sampled	21/06/2018				21/06/2018	21/06/2018	21/06/2018	21/06/2018
Time Taken	None Supplied				None Supplied	None Supplied	None Supplied	None Supplied
Analytical Parameter (Soil Analysis)	Units	Limit of detection	Accreditation Status					

SVOCs								
Compound	Units	Limit of detection	Accreditation Status	987998	987999	988000	988001	988002
Aniline	mg/kg	0.1	NONE	-	-	< 0.1	-	-
Phenol	mg/kg	0.2	ISO 17025	-	-	< 0.2	-	-
2-Chlorophenol	mg/kg	0.1	MCERTS	-	-	< 0.1	-	-
Bis(2-chloroethyl)ether	mg/kg	0.2	MCERTS	-	-	< 0.2	-	-
1,3-Dichlorobenzene	mg/kg	0.2	MCERTS	-	-	< 0.2	-	-
1,2-Dichlorobenzene	mg/kg	0.1	MCERTS	-	-	< 0.1	-	-
1,4-Dichlorobenzene	mg/kg	0.2	MCERTS	-	-	< 0.2	-	-
Bis(2-chloroisopropyl)ether	mg/kg	0.1	MCERTS	-	-	< 0.1	-	-
2-Methylphenol	mg/kg	0.3	MCERTS	-	-	< 0.3	-	-
Hexachloroethane	mg/kg	0.05	MCERTS	-	-	< 0.05	-	-
Nitrobenzene	mg/kg	0.3	MCERTS	-	-	< 0.3	-	-
4-Methylphenol	mg/kg	0.2	NONE	-	-	< 0.2	-	-
Isophorone	mg/kg	0.2	MCERTS	-	-	< 0.2	-	-
2-Nitrophenol	mg/kg	0.3	MCERTS	-	-	< 0.3	-	-
2,4-Dimethylphenol	mg/kg	0.3	MCERTS	-	-	< 0.3	-	-
Bis(2-chloroethoxy)methane	mg/kg	0.3	MCERTS	-	-	< 0.3	-	-
1,2,4-Trichlorobenzene	mg/kg	0.3	MCERTS	-	-	< 0.3	-	-
Naphthalene	mg/kg	0.05	MCERTS	-	-	< 0.05	-	-
2,4-Dichlorophenol	mg/kg	0.3	MCERTS	-	-	< 0.3	-	-
4-Chloroaniline	mg/kg	0.1	NONE	-	-	< 0.1	-	-
Hexachlorobutadiene	mg/kg	0.1	MCERTS	-	-	< 0.1	-	-
4-Chloro-3-methylphenol	mg/kg	0.1	NONE	-	-	< 0.1	-	-
2,4,6-Trichlorophenol	mg/kg	0.1	MCERTS	-	-	< 0.1	-	-
2,4,5-Trichlorophenol	mg/kg	0.2	MCERTS	-	-	< 0.2	-	-
2-Methylnaphthalene	mg/kg	0.1	NONE	-	-	< 0.1	-	-
2-Chloronaphthalene	mg/kg	0.1	MCERTS	-	-	< 0.1	-	-
Dimethylphthalate	mg/kg	0.1	MCERTS	-	-	< 0.1	-	-
2,6-Dinitrotoluene	mg/kg	0.1	MCERTS	-	-	< 0.1	-	-
Acenaphthylene	mg/kg	0.05	MCERTS	-	-	< 0.05	-	-
Acenaphthene	mg/kg	0.05	MCERTS	-	-	< 0.05	-	-
2,4-Dinitrotoluene	mg/kg	0.2	MCERTS	-	-	< 0.2	-	-
Dibenzofuran	mg/kg	0.2	MCERTS	-	-	< 0.2	-	-
4-Chlorophenyl phenyl ether	mg/kg	0.3	ISO 17025	-	-	< 0.3	-	-
Diethyl phthalate	mg/kg	0.2	MCERTS	-	-	< 0.2	-	-
4-Nitroaniline	mg/kg	0.2	MCERTS	-	-	< 0.2	-	-
Fluorene	mg/kg	0.05	MCERTS	-	-	< 0.05	-	-
Azobenzene	mg/kg	0.3	MCERTS	-	-	< 0.3	-	-
Bromophenyl phenyl ether	mg/kg	0.2	MCERTS	-	-	< 0.2	-	-
Hexachlorobenzene	mg/kg	0.3	MCERTS	-	-	< 0.3	-	-
Phenanthrene	mg/kg	0.05	MCERTS	-	-	< 0.05	-	-
Anthracene	mg/kg	0.05	MCERTS	-	-	< 0.05	-	-
Carbazole	mg/kg	0.3	MCERTS	-	-	< 0.3	-	-
Dibutyl phthalate	mg/kg	0.2	MCERTS	-	-	< 0.2	-	-
Anthraquinone	mg/kg	0.3	MCERTS	-	-	< 0.3	-	-
Fluoranthene	mg/kg	0.05	MCERTS	-	-	< 0.05	-	-
Pyrene	mg/kg	0.05	MCERTS	-	-	< 0.05	-	-
Butyl benzyl phthalate	mg/kg	0.3	ISO 17025	-	-	< 0.3	-	-
Benzo(a)anthracene	mg/kg	0.05	MCERTS	-	-	< 0.05	-	-
Chrysene	mg/kg	0.05	MCERTS	-	-	< 0.05	-	-
Benzo(b)fluoranthene	mg/kg	0.05	MCERTS	-	-	< 0.05	-	-
Benzo(k)fluoranthene	mg/kg	0.05	MCERTS	-	-	< 0.05	-	-
Benzo(a)pyrene	mg/kg	0.05	MCERTS	-	-	< 0.05	-	-
Indeno(1,2,3-cd)pyrene	mg/kg	0.05	MCERTS	-	-	< 0.05	-	-
Dibenz(a,h)anthracene	mg/kg	0.05	MCERTS	-	-	< 0.05	-	-
Benzo(ghi)perylene	mg/kg	0.05	MCERTS	-	-	< 0.05	-	-



Analytical Report Number: 18-90093
Project / Site name: Castlewood House

Lab Sample Number	988003			988004	988005	988006	988007	
Sample Reference	TP104			TP104	BH104	BH104	BH104	
Sample Number	None Supplied			None Supplied	None Supplied	None Supplied	None Supplied	
Depth (m)	0.50			1.00	0.50	1.20	2.00	
Date Sampled	21/06/2018			21/06/2018	21/06/2018	21/06/2018	21/06/2018	
Time Taken	None Supplied			None Supplied	None Supplied	None Supplied	None Supplied	
Analytical Parameter (Soil Analysis)	Units	Limit of detection	Accreditation Status					
Stone Content	%	0.1	NONE	< 0.1	< 0.1	< 0.1	1.3	< 0.1
Moisture Content	%	N/A	NONE	11	16	20	16	13
Total mass of sample received	kg	0.001	NONE	0.42	0.47	0.96	0.48	0.59

Asbestos in Soil	Type	N/A	ISO 17025	-	-	-	-	-
------------------	------	-----	-----------	---	---	---	---	---

General Inorganics

pH - Automated	pH Units	N/A	MCERTS	-	-	-	-	-
Water Soluble SO4 16hr extraction (2:1 Leachate Equivalent)	g/l	0.00125	MCERTS	-	-	-	-	-

Speciated PAHs

Naphthalene	mg/kg	0.05	MCERTS	-	-	-	< 0.05	< 0.05
Acenaphthylene	mg/kg	0.05	MCERTS	-	-	-	< 0.05	< 0.05
Acenaphthene	mg/kg	0.05	MCERTS	-	-	-	< 0.05	< 0.05
Fluorene	mg/kg	0.05	MCERTS	-	-	-	< 0.05	< 0.05
Phenanthrene	mg/kg	0.05	MCERTS	-	-	-	< 0.05	< 0.05
Anthracene	mg/kg	0.05	MCERTS	-	-	-	< 0.05	< 0.05
Fluoranthene	mg/kg	0.05	MCERTS	-	-	-	< 0.05	< 0.05
Pyrene	mg/kg	0.05	MCERTS	-	-	-	< 0.05	< 0.05
Benzo(a)anthracene	mg/kg	0.05	MCERTS	-	-	-	< 0.05	< 0.05
Chrysene	mg/kg	0.05	MCERTS	-	-	-	< 0.05	< 0.05
Benzo(b)fluoranthene	mg/kg	0.05	MCERTS	-	-	-	< 0.05	< 0.05
Benzo(k)fluoranthene	mg/kg	0.05	MCERTS	-	-	-	< 0.05	< 0.05
Benzo(a)pyrene	mg/kg	0.05	MCERTS	-	-	-	< 0.05	< 0.05
Indeno(1,2,3-cd)pyrene	mg/kg	0.05	MCERTS	-	-	-	< 0.05	< 0.05
Dibenz(a,h)anthracene	mg/kg	0.05	MCERTS	-	-	-	< 0.05	< 0.05
Benzo(ghi)perylene	mg/kg	0.05	MCERTS	-	-	-	< 0.05	< 0.05

Total PAH

Speciated Total EPA-16 PAHs	mg/kg	0.8	MCERTS	-	-	-	< 0.80	< 0.80
-----------------------------	-------	-----	--------	---	---	---	--------	--------

Heavy Metals / Metalloids

Arsenic (aqua regia extractable)	mg/kg	1	MCERTS	-	8.0	19	-	4.3
Boron (water soluble)	mg/kg	0.2	MCERTS	-	1.2	1.1	-	0.3
Cadmium (aqua regia extractable)	mg/kg	0.2	MCERTS	-	< 0.2	< 0.2	-	< 0.2
Chromium (aqua regia extractable)	mg/kg	1	MCERTS	-	30	31	-	10
Copper (aqua regia extractable)	mg/kg	1	MCERTS	-	26	21	-	13
Lead (aqua regia extractable)	mg/kg	1	MCERTS	-	42	18	-	5.4
Mercury (aqua regia extractable)	mg/kg	0.3	MCERTS	-	< 0.3	< 0.3	-	< 0.3
Nickel (aqua regia extractable)	mg/kg	1	MCERTS	-	23	34	-	10
Selenium (aqua regia extractable)	mg/kg	1	MCERTS	-	< 1.0	< 1.0	-	2.4
Zinc (aqua regia extractable)	mg/kg	1	MCERTS	-	51	57	-	18



Analytical Report Number: 18-90093
 Project / Site name: Castlewood House

Lab Sample Number	988003			988004			988005			988006			988007		
Sample Reference	TP104			TP104			BH104			BH104			BH104		
Sample Number	None Supplied			None Supplied			None Supplied			None Supplied			None Supplied		
Depth (m)	0.50			1.00			0.50			1.20			2.00		
Date Sampled	21/06/2018			21/06/2018			21/06/2018			21/06/2018			21/06/2018		
Time Taken	None Supplied			None Supplied			None Supplied			None Supplied			None Supplied		
Analytical Parameter (Soil Analysis)	Units	Limit of detection	Accreditation Status												

Monoaromatics								
Benzene	µg/kg	1	MCERTS	< 1.0	-	-	< 1.0	-
Toluene	µg/kg	1	MCERTS	< 1.0	-	-	< 1.0	-
Ethylbenzene	µg/kg	1	MCERTS	< 1.0	-	-	< 1.0	-
p & m-xylene	µg/kg	1	MCERTS	< 1.0	-	-	< 1.0	-
o-xylene	µg/kg	1	MCERTS	< 1.0	-	-	< 1.0	-
MTBE (Methyl Tertiary Butyl Ether)	µg/kg	1	MCERTS	< 1.0	-	-	< 1.0	-

Petroleum Hydrocarbons

TPH C10 - C40	mg/kg	10	MCERTS	-	< 10	-	-	< 10
TPH-CWG - Aliphatic >EC5 - EC6	mg/kg	0.001	MCERTS	< 0.001	-	-	< 0.001	-
TPH-CWG - Aliphatic >EC6 - EC8	mg/kg	0.001	MCERTS	< 0.001	-	-	< 0.001	-
TPH-CWG - Aliphatic >EC8 - EC10	mg/kg	0.001	MCERTS	< 0.001	-	-	< 0.001	-
TPH-CWG - Aliphatic >EC10 - EC12	mg/kg	1	MCERTS	< 1.0	-	-	< 1.0	-
TPH-CWG - Aliphatic >EC12 - EC16	mg/kg	2	MCERTS	< 2.0	-	-	< 2.0	-
TPH-CWG - Aliphatic >EC16 - EC21	mg/kg	8	MCERTS	< 8.0	-	-	< 8.0	-
TPH-CWG - Aliphatic >EC21 - EC35	mg/kg	8	MCERTS	52	-	-	< 8.0	-
TPH-CWG - Aliphatic (EC5 - EC35)	mg/kg	10	MCERTS	57	-	-	< 10	-
TPH-CWG - Aromatic >EC5 - EC7	mg/kg	0.001	MCERTS	< 0.001	-	-	< 0.001	-
TPH-CWG - Aromatic >EC7 - EC8	mg/kg	0.001	MCERTS	< 0.001	-	-	< 0.001	-
TPH-CWG - Aromatic >EC8 - EC10	mg/kg	0.001	MCERTS	< 0.001	-	-	< 0.001	-
TPH-CWG - Aromatic >EC10 - EC12	mg/kg	1	MCERTS	< 1.0	-	-	< 1.0	-
TPH-CWG - Aromatic >EC12 - EC16	mg/kg	2	MCERTS	< 2.0	-	-	< 2.0	-
TPH-CWG - Aromatic >EC16 - EC21	mg/kg	10	MCERTS	< 10	-	-	< 10	-
TPH-CWG - Aromatic >EC21 - EC35	mg/kg	10	MCERTS	25	-	-	< 10	-
TPH-CWG - Aromatic (EC5 - EC35)	mg/kg	10	MCERTS	28	-	-	< 10	-