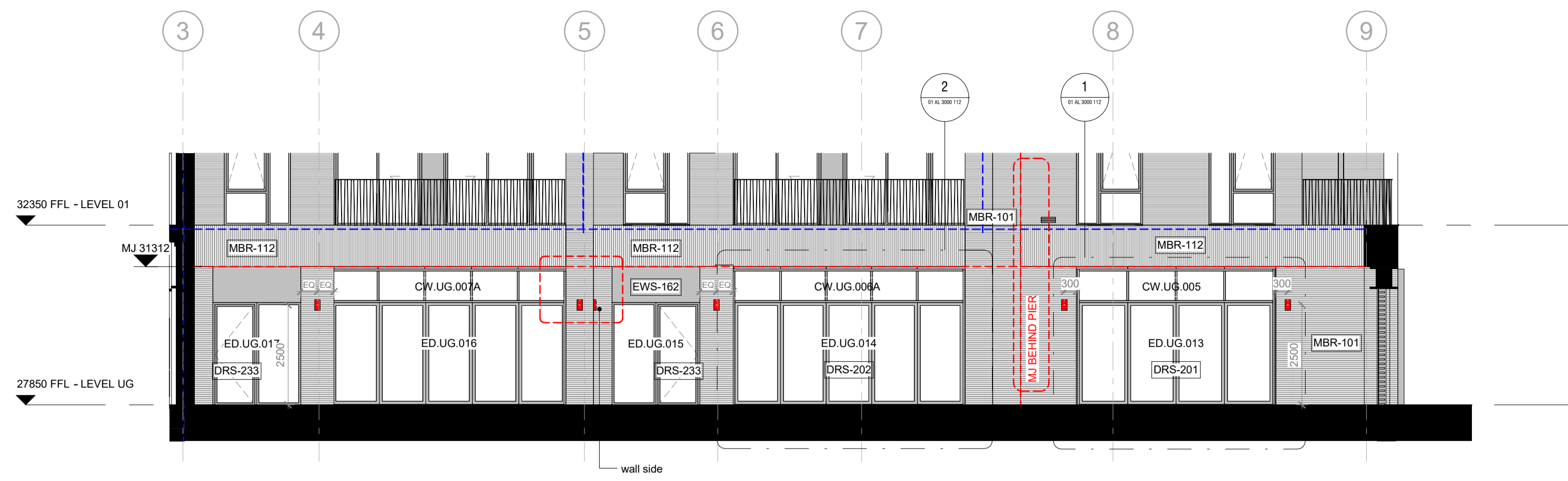
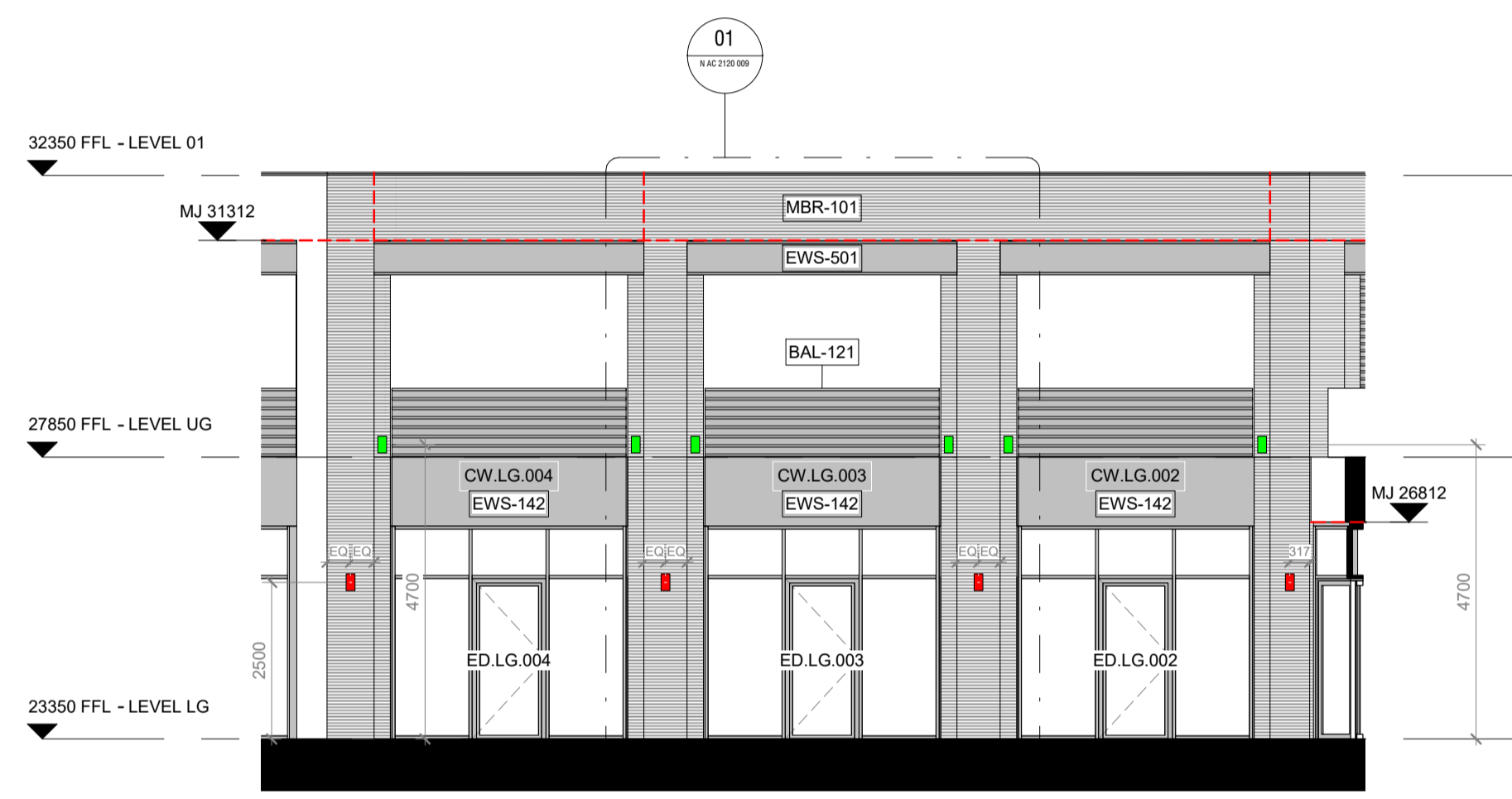


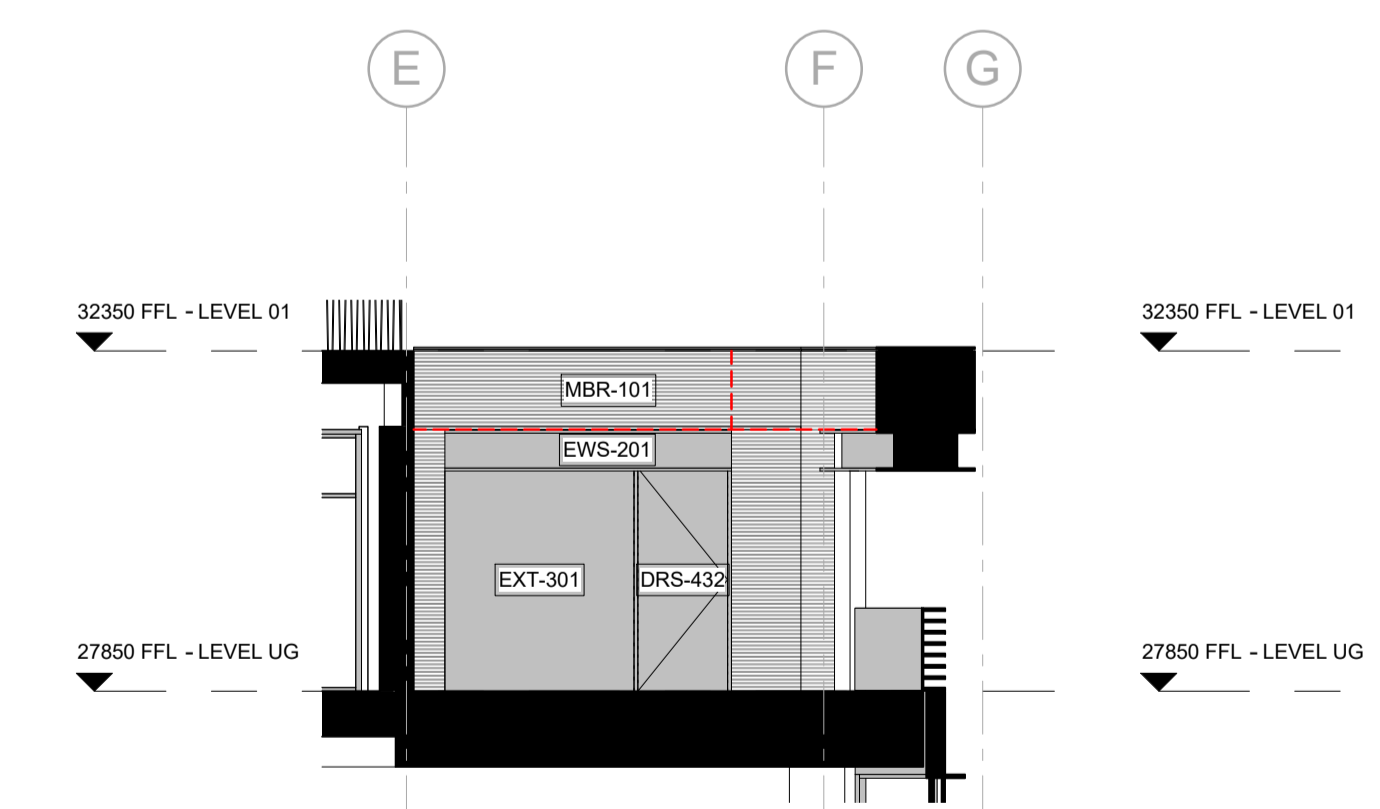
All dimensions are in mm unless otherwise stated
 All dimensions to be verified on site before proceeding with the work
 Any discrepancies to be notified in writing to architect immediately
 All boundaries indicative only and to be confirmed by others



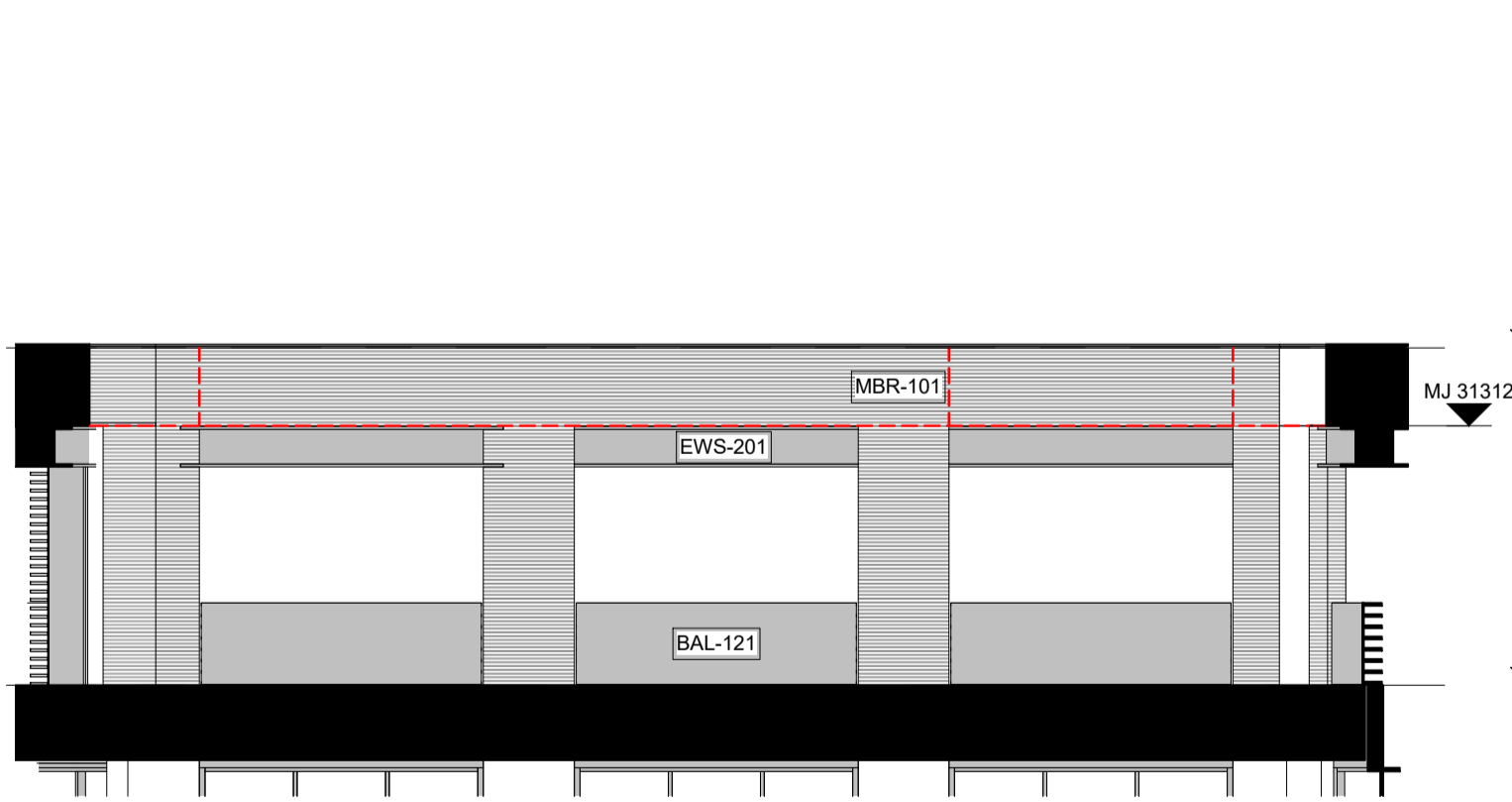
01 - North Block Upper Ground - Landscape Garden Area



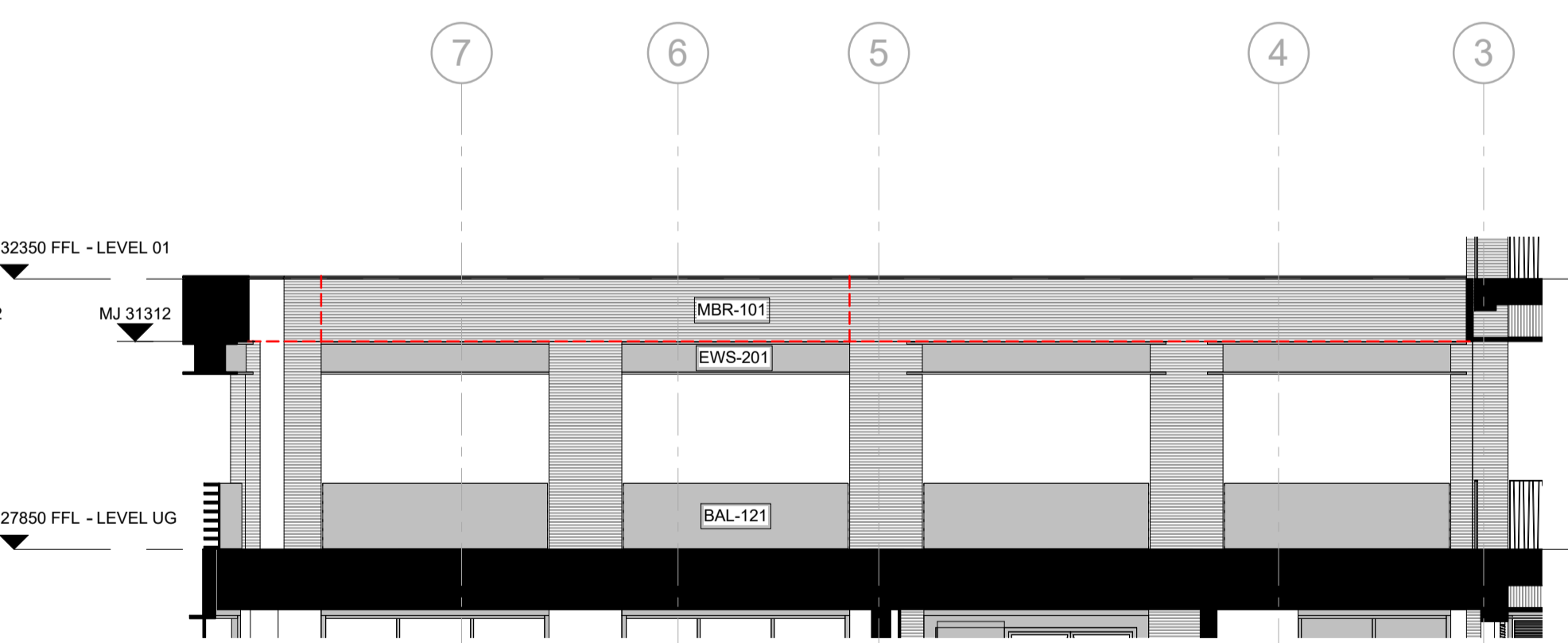
02 - North Block South Elevation Lower and Upper Ground



Colonnade Internal Elevation 1



Colonnade Internal Elevation 2



Colonnade Internal Elevation 3



NOTE
 Contractor drawings and samples to be submitted for approval prior to fabrication.
 All dimensions are in millimeters unless otherwise noted.
 All dimensions are to be checked on site and any discrepancies reported to the Architect.

SSL - Structural Slab Level
 SFL - Screed Floor Level - Top of the Screed
 FFL - Finish Floor Level (including finish eg: carpet or tiles)

This drawing must be read in conjunction with all relevant Specifications and Consultant Drawings. Specific drawing information can be found under the following drawing series:

MBR - 101	Facing Brickwork Randers Teg1 160 Ultima
MBR - 112	Facing Brickslip Soldier Course Randers Teg1 160 Ultima
BAL - 102	Frameless Glass Balustrade
BAL - 112	Metal Balustrade RAL 9005 Matt
EWS - 162	Metal Panel RAL 9005 Matt
EWS - 142	Metal Panel with Louvre RAL 9005 Matt
EWS - 201	Metal Panel Cladding, Penthouse
EWS - 501	Metal Profile RAL 9005 Matt
EXT - 302	Privacy Screens RAL 9005 Matt. Mesh and profile TBC by the employer.
EWS - 721	White Render
AMW - 311/312	Enclosure for services equipment RAL 9005 Matt. Profile TBC by the employer.
---	Fire Compartment. Refer to the Engineer's Drawings.
---	Indicative Brick Movement Joint. TBC by Specialist.
---	Indicative Brick Joint aligned with brick soffit on balconies.
---	Sparrow Nest Box W430 x H245 x D200 mm
---	Swift Nest Box W980 x H150 x D150 mm
---	Enclosed Bat Box (Large) W215 x H290 x D105 mm
---	Wall Mounted Lamp 1869LM H265 mm Diameter 140 mm
---	Wall Mounted Lamp 133LM H170 mm Diameter 70 mm
---	Wall Mounted Lamp 733LM - Road Asymmetric - H265 mm Diameter 140 mm
---	Wall Mounted, Lowe Pole 319LM H320 x W150 mm
---	Wall Mounted Lamp on Balconies. Fixing point 2100 mm from FFL.
---	LED light strip integrated into metal handrails shown indicatively

Note:
 Movement Joints on 'Inside Corners' setting out, refer to Reference Plans under 0010 Series.
 RWP Plates, Brick Joints and Wall Lamps on Balconies setting out needs to be read together with 0010 Series and 3600 Series.

04	07.02.19	Lights added/deleted/moved as per client comments, see revision clouds; LED strip incorporated on handrails, see revision clouds; bottom grilles have moved down, see revision clouds; MJ amended as per Client and Structural Engineer comments. Notes added on MJ in order to clarify real position; Brick Joints/Wall Lamps/RWP plates have been incorporated on Balconies; Key and Notes have been updated, see revision clouds.	AO
03	12.12.18	Movement joints added as per Walsh drawings; Sliding doors into balconies revised as per client change; General updates in line with updates on external openings.	AO
02	16.02.18	General updates as per revision clouds, material key added to the elevations.	GF
01	13.10.17	Stage 04 Main Building Submission	GF
-	17.05.17	Stage 03 Main Building Pack	GF
REV	DATE	NOTES	INT

STAGE 05 - CONSTRUCTION

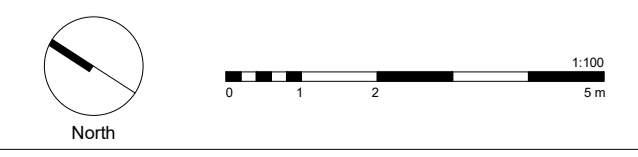
HUTCHINSON & PARTNERS
 3 14 The Record Hall, 16-16A Baldwin's Garden, London, EC1N 7RJ
 1 020 3176 8192 e. info@hutchinsonandpartners.com w. www.hutchinsonandpartners.com

JOB TITLE
 Stanley Sidings, 101 Camley Street, Camden

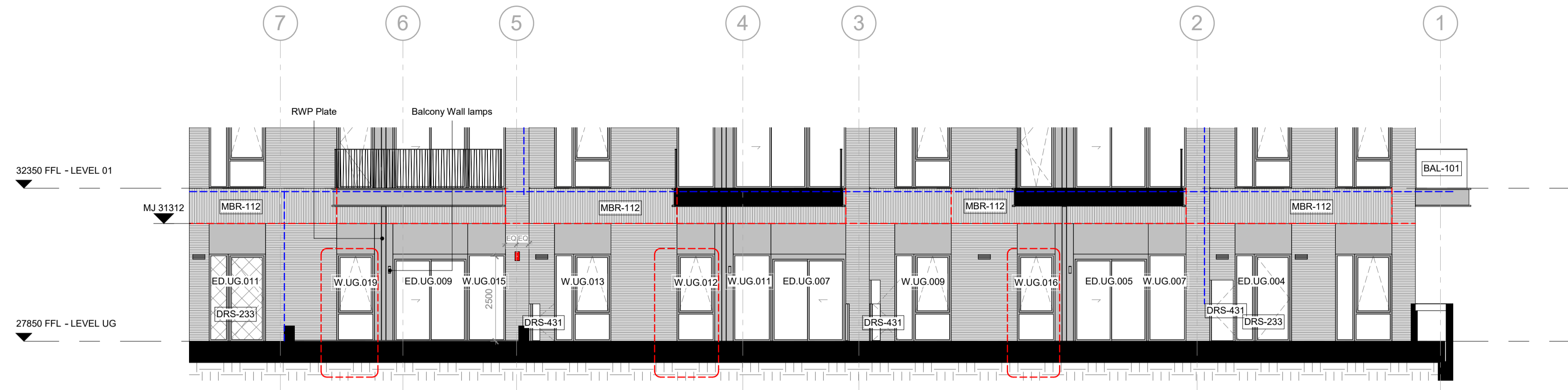
DRAWING TITLE / LOCATION
 North Block Envelope - Lower Levels

DRAWN BY	CHECKED	SCALE	STATUS
GFV	DMV	1:100@A1 / 1:200@A3	STAGE 05
PROJECT	DRAWING NO	REVISION	
16022	N AL 0020 006	04	

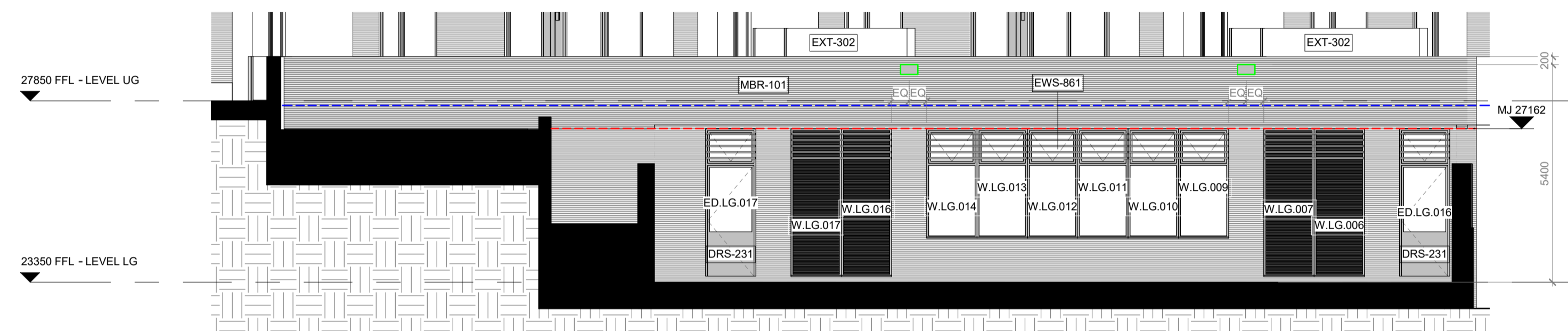
CLIENT



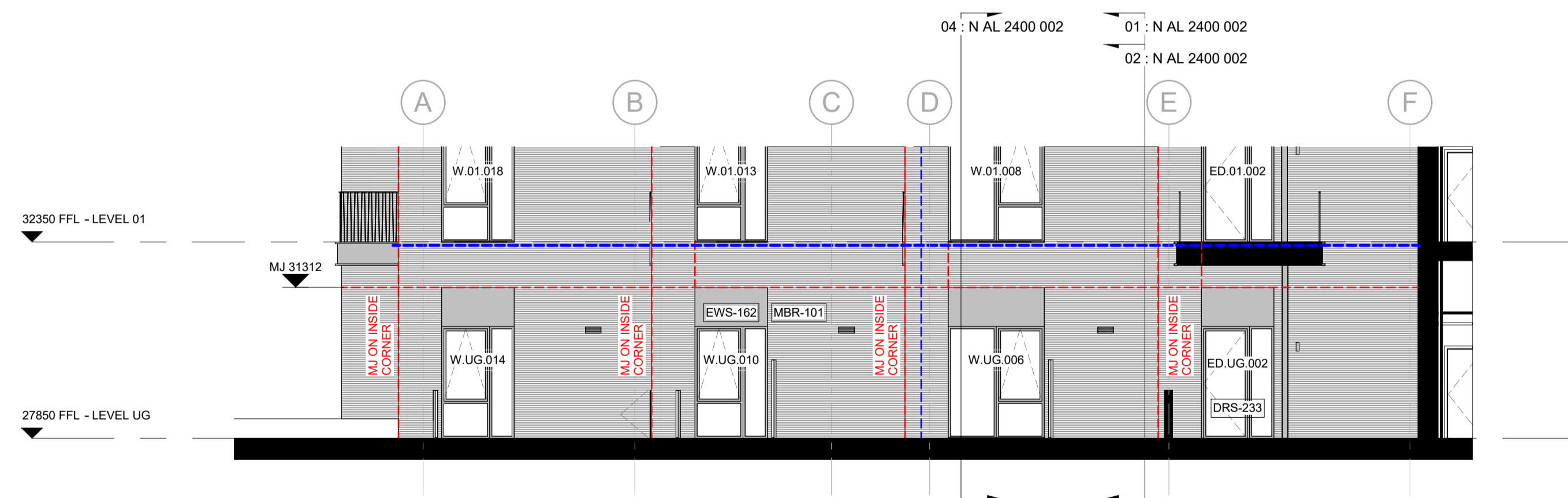
All dimensions are in mm unless otherwise stated
 All dimensions to be verified on site before proceeding with the work
 Any discrepancies to be notified in writing to architect immediately
 All boundaries indicative only and to be confirmed by others



01 - North Block Canal side Upper Ground (Behind Planter)



02 - North Block Canal Side Employment Elevation



03 - North Block Canal Side Elevation (Behind Planter)



NOTE
 Contractor drawings and samples to be submitted for approval prior to fabrication.
 All dimensions are in millimeters unless otherwise noted.
 All dimensions are to be checked on site and any discrepancies reported to the Architect.

SSL – Structural Slab Level
 SFL – Screed Floor Level – Top of the Screed
 FFL – Finish Floor Level (including finish eg: carpet or tiles)

This drawing must be read in conjunction with all relevant Specifications and Consultant Drawings. Specific drawing information can be found under the following drawing series:

MBR - 101	Facing Brickwork Randers Teg1 160 Ultima
MBR - 112	Facing Brickslip Soldier Course Randers Teg1 160 Ultima
BAL - 102	Frameless Glass Balustrade
BAL - 112	Metal Balustrade RAL 9005 Matt
EWS - 162	Metal Panel RAL 9005 Matt
EWS - 142	Metal Panel with Louvre RAL 9005 Matt
EWS - 201	Metal Panel Cladding, Penthouse
EWS - 501	Metal Profile RAL 9005 Matt
EXT - 302	Privacy Screens RAL 9005 Matt. Mesh and profile TBC by the employer.
EWS - 721	White Render
AMW - 311/312	Enclosure for services equipment RAL 9005 Matt. Profile TBC by the employer.
---	Fire Compartment. Refer to the Engineer's Drawings.
---	Indicative Brick Movement Joint. TBC by Specialist.
---	Indicative Brick Joint aligned with brick soffit on balconies.
---	Sparrow Nest Box W430 x H245 x D200 mm
---	Swift Nest Box W980 x H150 x D150 mm
---	Enclosed Bat Box (Large) W215 x H290 x D105 mm
---	Wall Mounted Lamp 1869LM H265 mm Diameter 140 mm
---	Wall Mounted Lamp 133LM H170 mm Diameter 70 mm
---	Wall Mounted Lamp 733LM - Road Asymmetric - H265 mm Diameter 140 mm
---	Wall Mounted, Lowe Pole 319LM H320 x W150 mm
---	Wall Mounted Lamp on Balconies. Fixing point 2100 mm from FFL.
---	LED light strip integrated into metal handrails shown indicatively.

Note:
 Movement Joints on 'Inside Corners' setting out, refer to Reference Plans under 0010 Series.
 RWP Plates, Brick Joints and Wall Lamps on Balconies setting out needs to be read together with 0010 Series and 3600 Series.

04	07.02.19	Lights added/deleted/moved as per client comments, see revision clouds; LED strip incorporated on handrails, see revision clouds; bottom grilles have moved down, see revision clouds; MJ amended as per Client and Structural Engineer comments. Notes added on MJ in order to clarify real position; Brick Joints/Wall Lamps/RWP plates have been incorporated on Balconies; Key and Notes have been updated, see revision clouds; 3x201A have been replaced on UG, see Rev Clouds.	AO
03	12.12.18	Movement joints added as per Walsh drawings; Sliding doors into balconies revised as per client change; General updates in line with updates on external openings.	AO
02	16.02.18	General updates as per revision clouds, material key added to the elevations.	GF
01	13.10.17	Stage 04 Main Building Submission	GF
-	17.05.17	Stage 03 Main Building Pack	GF
REV	DATE	NOTES	INT

STAGE 05 - CONSTRUCTION

HUTCHINSON & PARTNERS
 3 14 The Record Hall, 16-16A Baldwin's Garden, London, EC1N 7RJ
 1 020 3176 8192 e. info@hutchinsonandpartners.com w. www.hutchinsonandpartners.com

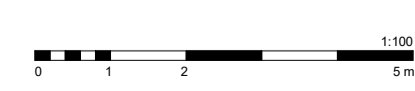
JOB TITLE
 Stanley Sidings, 101 Camley Street, Camden

DRAWING TITLE / LOCATION
 North Block Envelope - Lower Levels

DRAWN BY	CHECKED	SCALE	STATUS
DMV	GFV	1:100@A1 / 1:200@A3	STAGE 05
PROJECT	DRAWING NO	REVISION	
16022	N AL 0020 005	04	

CLIENT

© 2018 HUTCHINSON & PARTNERS Limited



All dimensions are in mm unless otherwise stated
 All dimensions to be verified on site before proceeding with the work
 Any discrepancies to be notified in writing to architect immediately
 All boundaries indicative only and to be confirmed by others



NOTE
 Contractor drawings and samples to be submitted for approval prior to fabrication.
 All dimensions are in millimeters unless otherwise noted.
 All dimensions are to be checked on site and any discrepancies reported to the Architect.

SSL – Structural Slab Level
 SFL – Screed Floor Level – Top of the Screed
 FFL – Finish Floor Level (including finish eg: carpet or tiles)
 This drawing must be read in conjunction with all relevant Specifications and Consultant Drawings. Specific drawing information can be found under the following drawing series:

- MBR - 101 Facing Brickwork Randers Teg1 160 Ultima
- MBR - 112 Facing Brickslip Soldier Course Randers Teg1 160 Ultima
- BAL - 102 Frameless Glass Balustrade
- BAL - 112 Metal Balustrade RAL 9005 Matt
- EWS - 162 Metal Panel RAL 9005 Matt
- EWS - 142 Metal Panel with Louvre RAL 9005 Matt
- EWS - 201 Metal Panel Cladding, Penthouse
- EWS - 501 Metal Profile RAL 9005 Matt
- EXT - 302 Privacy Screens RAL 9005 Matt. Mesh and profile TBC by the employer.
- EWS - 721 White Render
- AMW - 311/312 Enclosure for services equipment RAL 9005 Matt. Profile TBC by the employer.
- Fire Compartment. Refer to the Engineer's Drawings.
- Indicative Brick Movement Joint. TBC by Specialist.
- Indicative Brick Joint aligned with brick soffit on balconies.
- Sparrow Nest Box W430 x H245 x D200 mm
- Swift Nest Box W980 x H150 x D150 mm
- Enclosed Bat Box (Large) W215 x H290 x D105 mm
- Wall Mounted Lamp 1869LM H265 mm Diameter 140 mm
- Wall Mounted Lamp 133LM H170 mm Diameter 70 mm
- Wall Mounted Lamp 733LM - Road Asymmetric - H265 mm Diameter 140 mm
- Wall Mounted, -Lowe Pole 319LM H320 x W150 mm
- Wall Mounted Lamp on Balconies. Fixing point 2100 mm from FFL.
- LED light strip integrated into metal handrails shown indicatively.

Note:
 Movement Joints on 'Inside Corners' setting out, refer to Reference Plans under 0010 Series.
 RVP Plates, Brick Joints and Wall Lamps on Balconies setting out needs to be read together with 0010 Series and 3600 Series.

REV	DATE	NOTES	INT
04	07.02.19	Lights added/deleted/moved as per client comments, see revision clouds; LED strip incorporated on handrails, see revision clouds; bottom grilles have moved down, see revision clouds; MJ amended as per Client and Structural Engineer comments. Notes added on MJ in order to clarify real position; Brick Joints/Wall Lamps/RVP plates have been incorporated on Balconies; Key and Notes have been updated, see revision clouds.	AO
03	12.12.18	Movement joints added as per Walsh drawings; Sliding doors into balconies revised as per client change; General updates in line with updates on external openings.	AO
02	16.02.18	General updates as per revision clouds, material key added to the elevations.	GF
01	13.10.17	Stage 04 Main Building Submission	GF
-	17.05.17	Stage 03 Main Building Pack	GF

STAGE 05 - CONSTRUCTION

HUTCHINSON & PARTNERS
 3 14 The Record Hall, 16-16A Baldwin's Garden, London, EC1N 7RJ
 1 020 3176 8192 e. info@hutchinsonandpartners.com w. www.hutchinsonandpartners.com

JOB TITLE
Stanley Sidings, 101 Camley Street, Camden

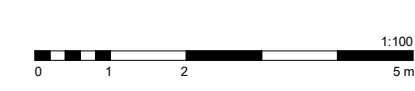
DRAWING TITLE / LOCATION
North Block Envelope - NE Elevation

DRAWN BY	CHECKED	SCALE	STATUS
MT	DV	1:100@A1 / 1:200@A3	STAGE 05
PROJECT	DRAWING NO	REVISION	
16022	N AL 0020 004	04	

CLIENT



North Block - NE Elevation



© 2018 HUTCHINSON & PARTNERS Limited

All dimensions are in mm unless otherwise stated
 All dimensions to be verified on site before proceeding with the work
 Any discrepancies to be notified in writing to architect immediately
 All boundaries indicative only and to be confirmed by others



NOTE
 Contractor drawings and samples to be submitted for approval prior to fabrication.
 All dimensions are in millimeters unless otherwise noted.
 All dimensions are to be checked on site and any discrepancies reported to the Architect.

SSL - Structural Slab Level
 SFL - Screed Floor Level - Top of the Screed
 FFL - Finish Floor Level (including finish eg: carpet or tiles)

This drawing must be read in conjunction with all relevant Specifications and Consultant Drawings. Specific drawing information can be found under the following drawing series:

- MBR - 101 Facing Brickwork Randers Teg1 160 Ultima
- MBR - 112 Facing Brickslip Soldier Course Randers Teg1 160 Ultima
- BAL - 102 Frameless Glass Balustrade
- BAL - 112 Metal Balustrade RAL 9005 Matt
- EWS - 162 Metal Panel RAL 9005 Matt
- EWS - 142 Metal Panel with Louvre RAL 9005 Matt
- EWS - 201 Metal Panel Cladding, Penthouse
- EWS - 501 Metal Profile RAL 9005 Matt
- EXT - 302 Privacy Screens RAL 9005 Matt. Mesh and profile TBC by the employer.
- EWS - 721 White Render
- AMW - 311/312 Enclosure for services equipment RAL 9005 Matt. Profile TBC by the employer.
- Fire Compartment. Refer to the Engineer's Drawings.
- Indicative Brick Movement Joint. TBC by Specialist.
- Indicative Brick Joint aligned with brick soffit on balconies.
- Sparrow Nest Box W430 x H245 x D200 mm
- Swift Nest Box W980 x H150 x D150 mm
- Enclosed Bat Box (Large) W215 x H290 x D105 mm
- Wall Mounted Lamp 1869LM H265 mm Diameter 140 mm
- Wall Mounted Lamp 133LM H170 mm Diameter 70 mm
- Wall Mounted Lamp 733LM - Road Asymmetric - H265 mm Diameter 140 mm
- Wall Mounted, Lowe Pole 319LM H320 x W150 mm
- Wall Mounted Lamp on Balconies. Fixing point 2100 mm from FFL.
- LED light strip integrated into metal handrails shown indicatively.

Note:
 Movement Joints on 'Inside Corners' setting out, refer to Reference Plans under 0010 Series.
 RWP Plates, Brick Joints and Wall Lamps on Balconies setting out needs to be read together with 0010 Series and 3600 Series.

REV	DATE	NOTES	INT
04	07.02.19	Lights added/deleted/moved as per client comments, see revision clouds; LED strip incorporated on handrails, see revision clouds; bottom grilles have moved down, see revision clouds; MJ amended as per Client and Structural Engineer comments. Notes added on MJ in order to clarify real position; Brick Joints/Wall Lamps/RWP plates have been incorporated on Balconies; Key and Notes have been updated, see revision clouds.	AO
03	12.12.18	Movement joints added as per Walsh drawings. Sliding doors into balconies revised as per client change. General updates in line with updates on external openings.	AO
02	16.02.18	General updates as per revision clouds, material key added to the elevations.	GF
01	13.10.17	Stage 04 Main Building Submission	GF
-	17.05.17	Stage 03 Main Building Pack	GF

STAGE 05 - CONSTRUCTION

HUTCHINSON & PARTNERS

3 14 The Record Hall, 16-16A Baldwin's Garden, London, EC1N 7RJ
 1 020 3176 8192 e. info@hutchinsonandpartners.com w. www.hutchinsonandpartners.com

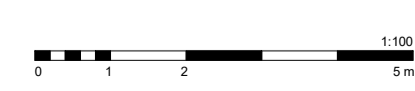
JOB TITLE
Stanley Sidings, 101 Camley Street, Camden

DRAWING TITLE / LOCATION
North Block Envelope - SE Elevation

DRAWN BY MT	CHECKED BY DV	SCALE 1:100@A1 / 1:200@A3	STATUS STAGE 05
PROJECT 16022	DRAWING NO N AL 0020 001	REVISION 04	

CLIENT

North Block - SE Elevation



All dimensions are in mm unless otherwise stated
 All dimensions to be verified on site before proceeding with the work
 Any discrepancies to be notified in writing to architect immediately
 All boundaries indicative only and to be confirmed by others



NOTE
 Contractor drawings and samples to be submitted for approval prior to fabrication.
 All dimensions are in millimeters unless otherwise noted.
 All dimensions are to be checked on site and any discrepancies reported to the Architect.

SSL – Structural Slab Level
 SFL – Screed Floor Level – Top of the Screed
 FFL – Finish Floor Level (including finish eg: carpet or tiles)

This drawing must be read in conjunction with all relevant Specifications and Consultant Drawings. Specific drawing information can be found under the following drawing series:

- MBR - 101 Facing Brickwork Randers Teg1 160 Ultima
- MBR - 112 Facing Brickslip Soldier Course Randers Teg1 160 Ultima
- BAL - 102 Frameless Glass Balustrade
- BAL - 112 Metal Balustrade RAL 9005 Matt
- EWS - 162 Metal Panel RAL 9005 Matt
- EWS - 142 Metal Panel with Louvre RAL 9005 Matt
- EWS - 201 Metal Panel Cladding, Penthouse
- EWS - 501 Metal Profile RAL 9005 Matt
- EXT - 302 Privacy Screens RAL 9005 Matt. Mesh and profile TBC by the employer.
- EWS - 721 White Render
- AMW - 311/312 Enclosure for services equipment RAL 9005 Matt. Profile TBC by the employer.
- Fire Compartment. Refer to the Engineer's Drawings.
- Indicative Brick Movement Joint. TBC by Specialist.
- Indicative Brick Joint aligned with brick soffit on balconies.
- Sparrow Nest Box W430 x H245 x D200 mm
- Swift Nest Box W980 x H150 x D150 mm
- Enclosed Bat Box (Large) W215 x H290 x D105 mm
- Wall Mounted Lamp 1869LM H265 mm Diameter 140 mm
- Wall Mounted Lamp 133LM H170 mm Diameter 70 mm
- Wall Mounted Lamp 733LM - Road Asymmetric - H265 mm Diameter 140 mm
- Wall Mounted, Lowe Pole 319LM H320 x W150 mm
- Wall Mounted Lamp on Balconies. Fixing point 2100 mm from FFL.
- LED light strip integrated into metal handrails shown indicatively.

Note:
 Movement Joints on 'Inside Corners' setting out, refer to Reference Plans under 0010 Series.
 RWP Plates, Brick Joints and Wall Lamps on Balconies setting out needs to be read together with 0010 Series and 3000 Series.

REV	DATE	NOTES	INT
04	07.02.19	Lights added/deleted/moved as per client comments, see revision clouds; LED strip incorporated on handrails, see revision clouds; bottom grilles have moved down, see revision clouds; MJ amended as per Client and Structural Engineer comments. Notes added on MJ in order to clarify real position; Brick Joints/Wall Lamps/RWP plates have been incorporated on Balconies; Key and Notes have been updated, see revision clouds.	AO
03	12.12.18	Movement joints added as per Walsh drawings. Sliding doors into balconies revised as per client change. General updates in line with updates on external openings.	AO
02	16.02.18	General updates as per revision clouds, material key added to the elevations.	GF
01	13.10.17	Stage 04 Main Building Submission	GF
-	17.05.17	Stage 03 Main Building Pack	GF

STAGE 05 - CONSTRUCTION

HUTCHINSON & PARTNERS
 3 14 The Record Hall, 16-16A Baldwin's Garden, London, EC1N 7RJ
 1.020 3176 8192 e.info@hutchinsonandpartners.com w.www.hutchinsonandpartners.com

JOB TITLE
Stanley Sidings, 101 Camley Street, Camden

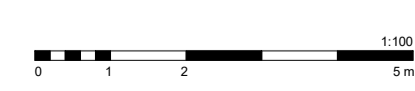
DRAWING TITLE / LOCATION
North Block Envelope - NW Elevation

DRAWN BY	CHECKED	SCALE	STATUS
MT	DV	1:100@A1 / 1:200@A3	STAGE 05
PROJECT	DRAWING NO	REVISION	
16022	N AL 0020 003	04	

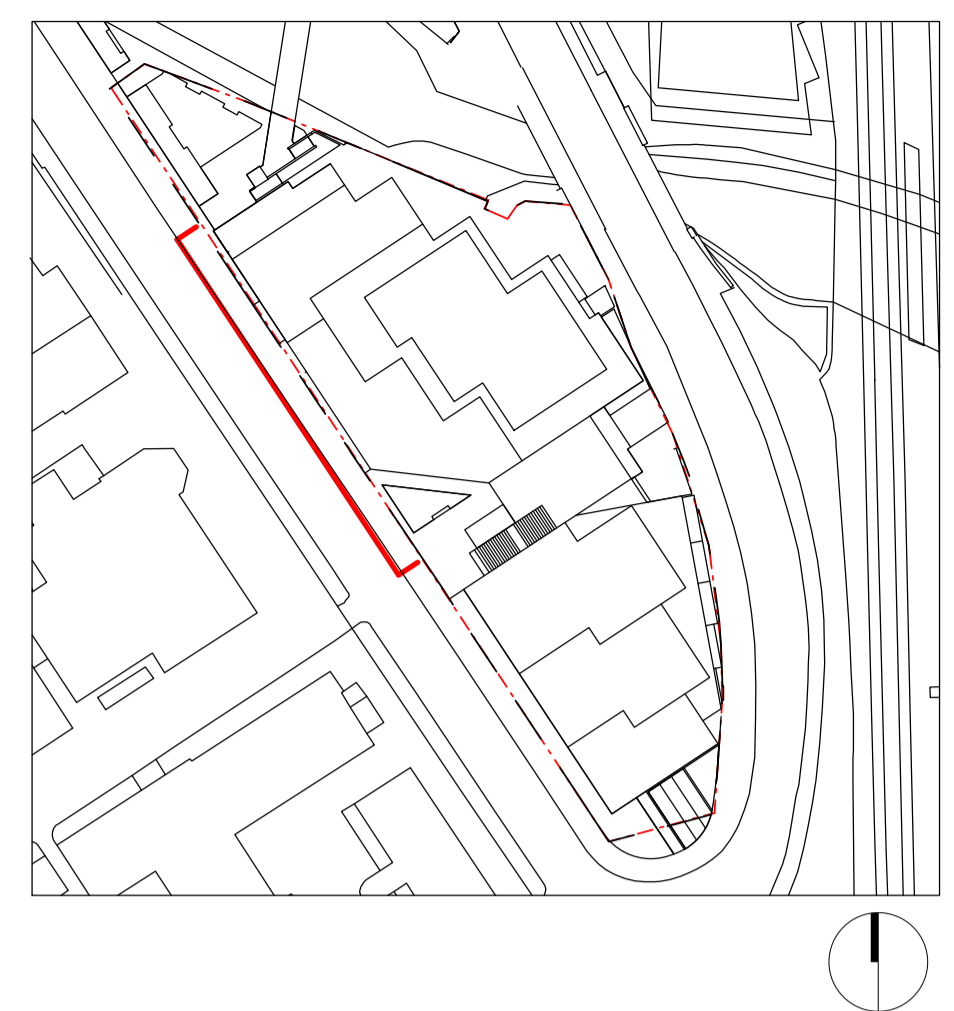
CLIENT



North Block - NW Elevation



All dimensions are in mm unless otherwise stated
 All dimensions to be verified on site before proceeding with the work
 Any discrepancies to be notified in writing to architect immediately
 All boundaries indicative only and to be confirmed by others



NOTE
 Contractor drawings and samples to be submitted for approval prior to fabrication.
 All dimensions are in millimeters unless otherwise noted.
 All dimensions are to be checked on site and any discrepancies reported to the Architect.

SSL – Structural Slab Level
 SFL – Screened Floor Level – Top of the Screened
 FFL – Finish Floor Level (including finish eg: carpet or tiles)

This drawing must be read in conjunction with all relevant Specifications and Consultant Drawings. Specific drawing information can be found under the following drawing series:

- MBR - 101 Facing Brickwork Randers Teggl 160 Ultima
- MBR - 112 Facing Brickslip Soldier Course Randers Teggl 160 Ultima
- BAL - 102 Frameless Glass Balustrade
- BAL - 112 Metal Balustrade RAL 9005 Matt
- EWS - 162 Metal Panel RAL 9005 Matt
- EWS - 142 Metal Panel with Louvre RAL 9005 Matt
- EWS - 201 Metal Panel Cladding, Penthouse
- EWS - 501 Metal Profile RAL 9005 Matt
- EXT - 302 Privacy Screens RAL 9005 Matt. Mesh and profile TBC by the employer.
- EWS - 721 White Render
- AMW - 311/312 Enclosure for services equipment RAL 9005 Matt. Profile TBC by the employer.
- Fire Compartment. Refer to the Engineer's Drawings.
- Indicative Brick Movement Joint. TBC by Specialist.
- Indicative Brick Joint aligned with brick soffit on balconies.
- Sparrow Nest Box W430 x H245 x D200 mm
- Swift Nest Box W980 x H150 x D150 mm
- Enclosed Bat Box (Large) W215 x H290 x D105 mm
- Wall Mounted Lamp 1869LM H265 mm Diameter 140 mm
- Wall Mounted Lamp 133LM H170 mm Diameter 70 mm
- Wall Mounted Lamp 733LM - Road Asymmetric - H265 mm Diameter 140 mm
- Wall Mounted, Lowe Pole 319LM H320 x W150 mm
- Wall Mounted Lamp on Balconies. Fixing point 2100 mm from FFL.
- LED light strip integrated into metal handrails shown indicatively.

Note:
 Movement Joints on 'Inside Corners' setting out, refer to Reference Plans under 0010 Series.
 RWP Plates, Brick Joints and Wall Lamps on Balconies setting out needs to be read together with 0010 Series and 3600 Series.

REV	DATE	NOTES	INT
04	07.02.19	Lights added/deleted/moved as per client comments, see revision clouds; LED strip incorporated on handrails, see revision clouds; bottom grilles have moved down, see revision clouds; MJ amended as per Client and Structural Engineer comments. Notes added on MJ in order to clarify real position; Brick Joints/Wall Lamps/RWP plates have been incorporated on Balconies; Key and Notes have been updated, see revision clouds.	AO
03	12.12.18	Movement joints added as per Walsh drawings. Sliding doors into balconies revised as per client change. General updates in line with updates on external openings.	AO
02	16.02.18	General updates as per revision clouds, material key added to the elevations.	GF
01	13.10.17	Stage 04 Main Building Submission	GF
-	17.05.17	Stage 03 Main Building Pack	GF

STAGE 05 - CONSTRUCTION

HUTCHINSON & PARTNERS

3 14 The Record Hall, 16-16A Baldwin's Garden, London, EC1N 7RJ
 1 020 3176 8192 e. info@hutchinsonandpartners.com w. www.hutchinsonandpartners.com

JOB TITLE
Stanley Sidings, 101 Camley Street, Camden

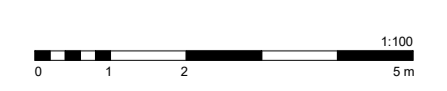
DRAWING TITLE / LOCATION
North Block Envelope - SW Elevation

DRAWN BY	CHECKED	SCALE	STATUS
MT	DV	1:100@A1 / 1:200@A3	STAGE 05
PROJECT	DRAWING NO	REVISION	
16022	N AL 0020 002	04	

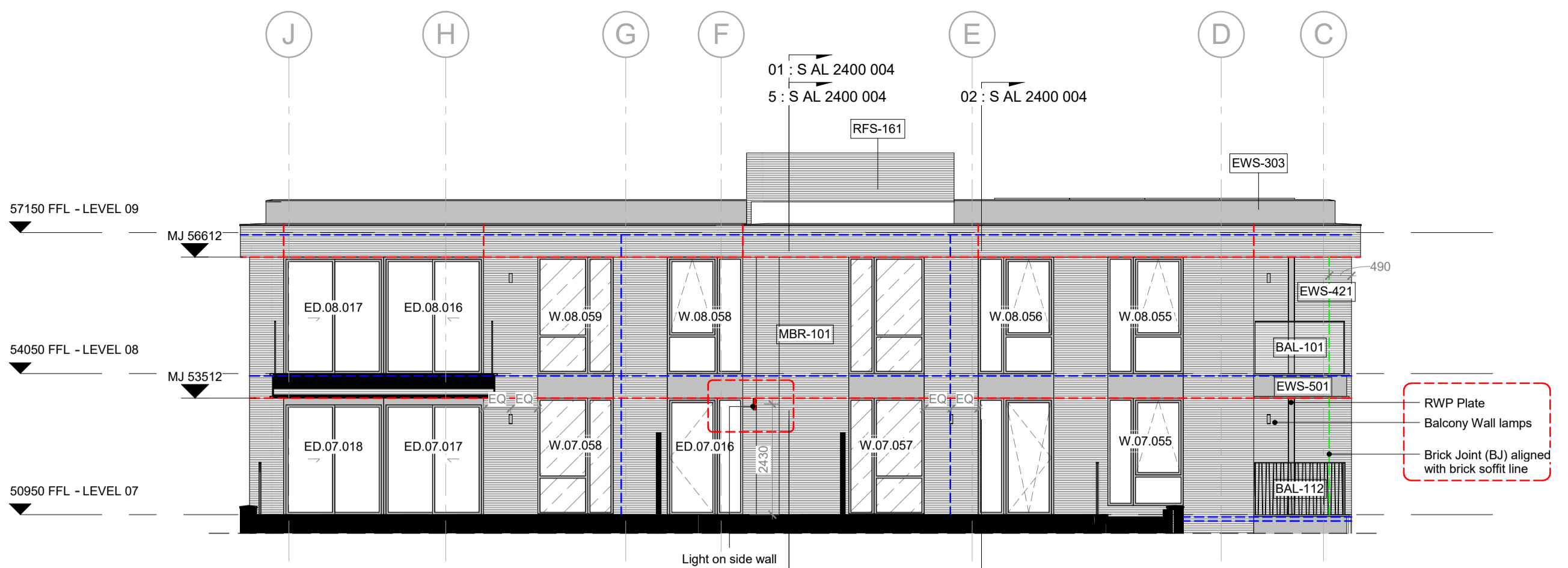
CLIENT



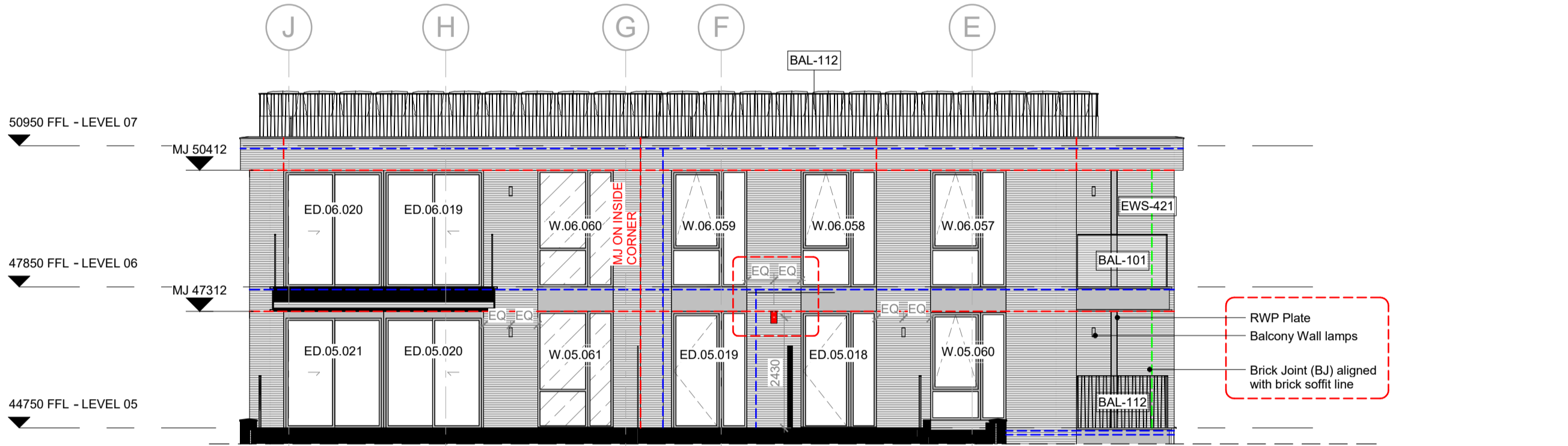
North Block - SW Elevation



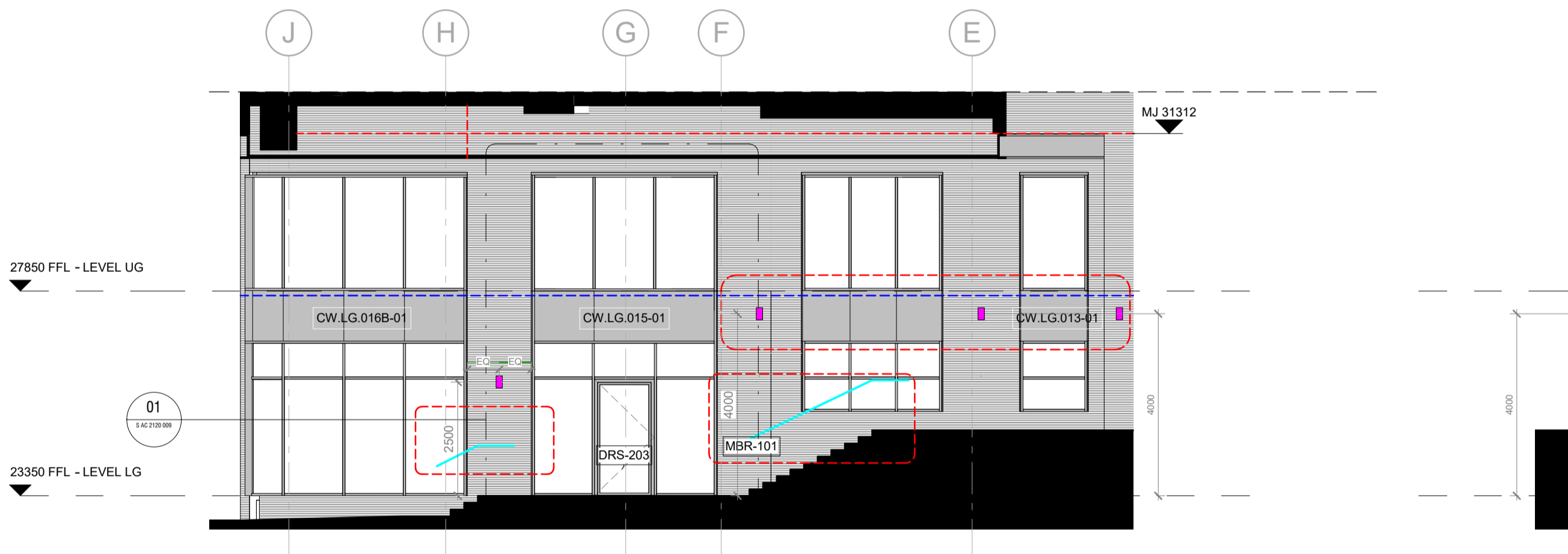
All dimensions are in mm unless otherwise stated
 All dimensions to be verified on site before proceeding with the work
 Any discrepancies to be notified in writing to architect immediately
 All boundaries indicative only and to be confirmed by others



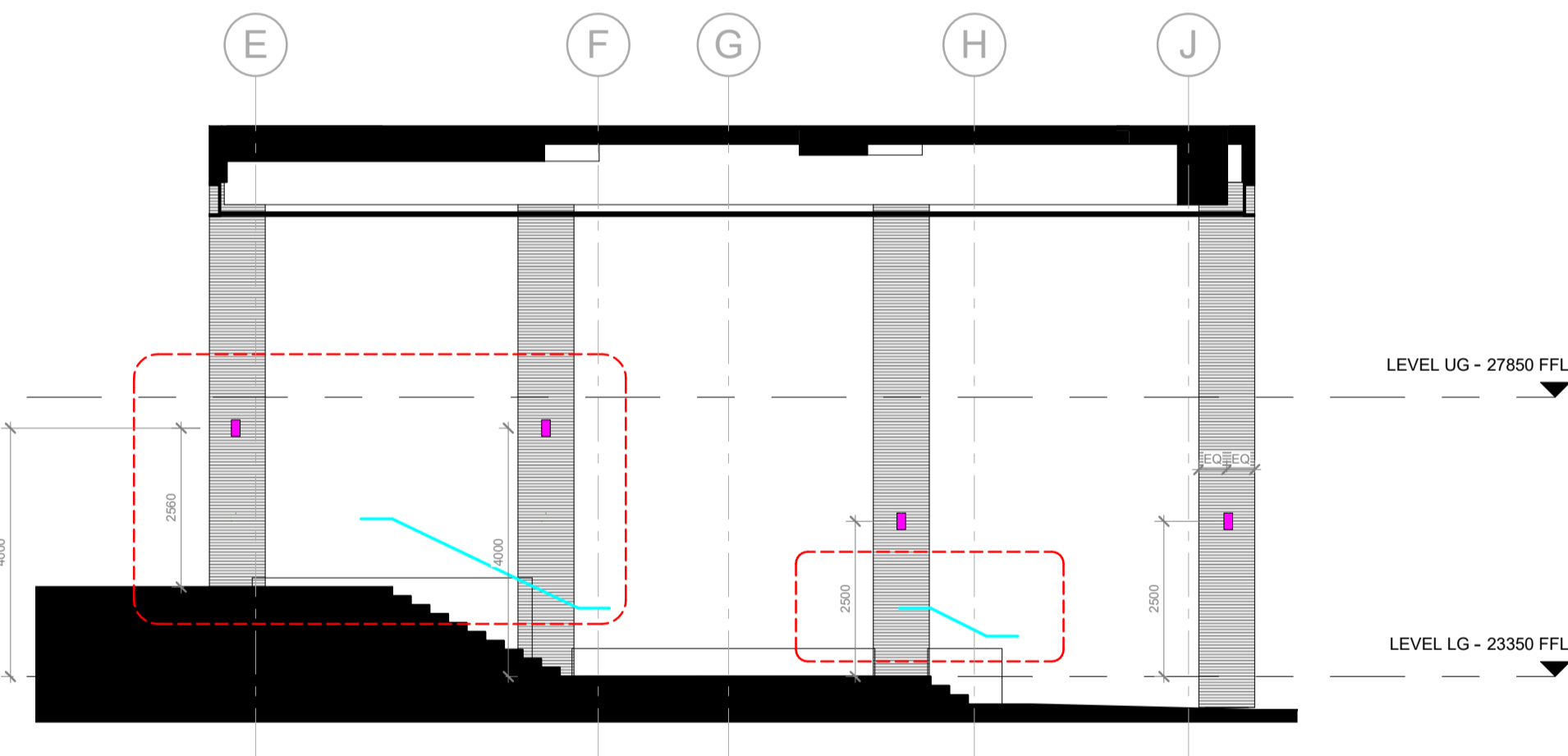
01 - South Block Upper Terrace Elevation



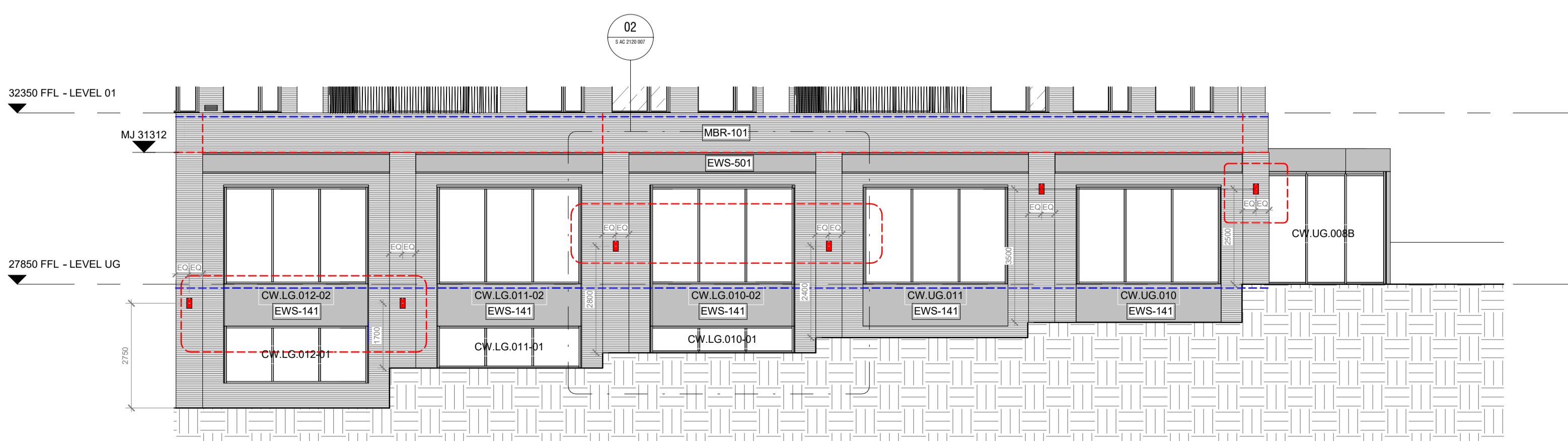
02 - South Block Mid Terrace Elevation



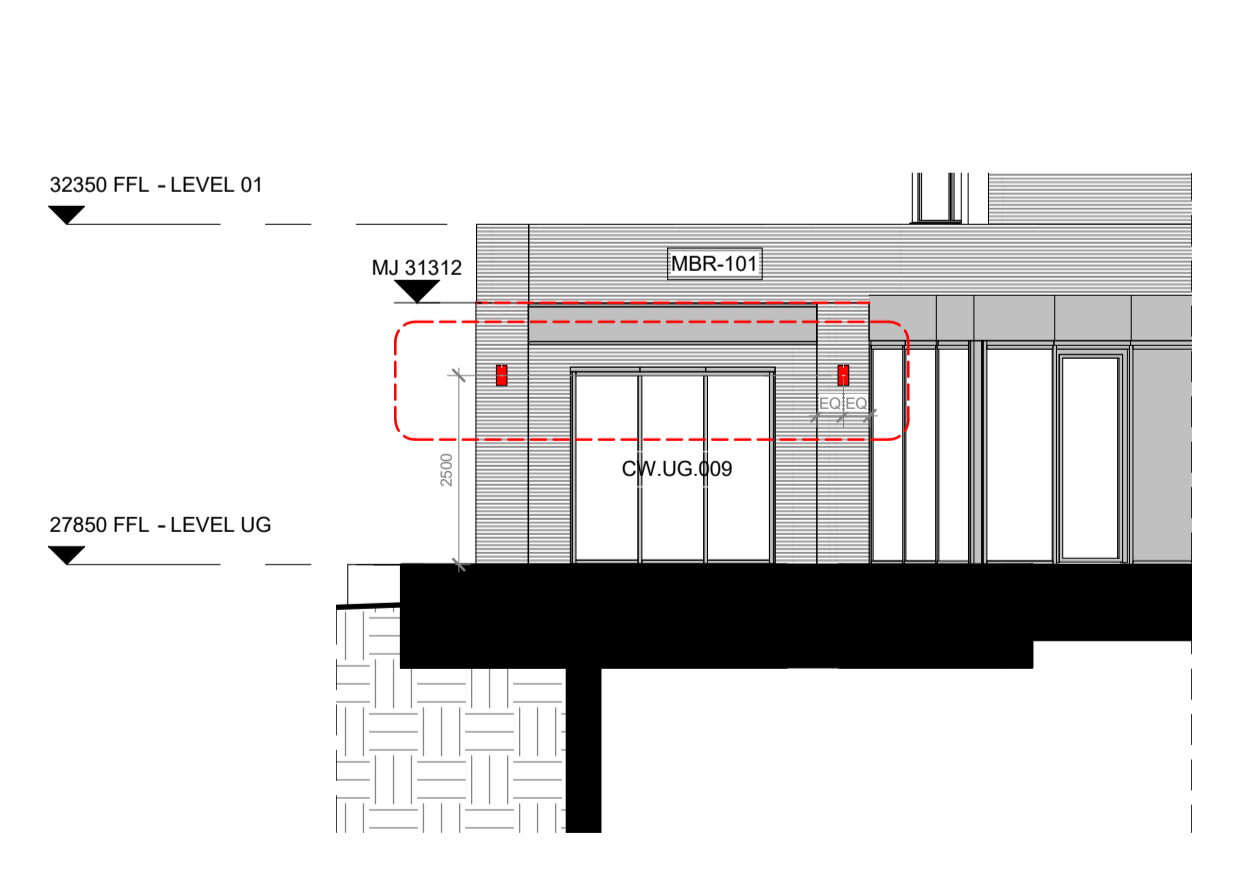
03 - South Block Lower level Elevation (Behind colonnade)



06 - South Block Lower level Elevation (Behind colonnade-opposite side)



04 - South Block Lower Level NE Elevations



05 - South Block North Bay Elevation



NOTE
 Contractor drawings and samples to be submitted for approval prior to fabrication.
 All dimensions are in millimeters unless otherwise noted.
 All dimensions are to be checked on site and any discrepancies reported to the Architect.

SSL - Structural Slab Level
 SFL - Scribed Floor Level - Top of the Scribed
 FFL - Finish Floor Level (including finish eg: carpet or tiles)

This drawing must be read in conjunction with all relevant Specifications and Consultant Drawings. Specific drawing information can be found under the following drawing series:

MBR - 101	Facing Brickwork Randers Teg1 160 Ultima
MBR - 112	Facing Brickslip Soldier Course Randers Teg1 160 Ultima
BAL - 102	Frameless Glass Balustrade
BAL - 112	Metal Balustrade RAL 9005 Matt
EWS - 162	Metal Panel RAL 9005 Matt
EWS - 142	Metal Panel with Louvre RAL 9005 Matt
EWS - 201	Metal Panel Cladding, Penthouse
EWS - 501	Metal Profile RAL 9005 Matt
EXT - 302	Privacy Screens RAL 9005 Matt. Mesh and profile TBC by the employer.
EWS - 721	White Render
AMW - 311/312	Enclosure for services equipment RAL 9005 Matt. Profile TBC by the employer.
---	Fire Compartment. Refer to the Engineer's Drawings.
---	Indicative Brick Movement Joint. TBC by Specialist.
---	Indicative Brick Joint aligned with brick soffit on balconies.
---	Sparrow Nest Box W430 x H245 x D200 mm
---	Swift Nest Box W980 x H150 x D150 mm
---	Enclosed Bat Box (Large) W215 x H290 x D105 mm
---	Wall Mounted Lamp 1869LM H265 mm Diameter 140 mm
---	Wall Mounted Lamp 133LM H170 mm Diameter 70 mm
---	Wall Mounted Lamp 733LM - Road Asymmetric - H265 mm Diameter 140 mm
---	Wall Mounted, Lowe Pole 319LM H320 x W150 mm
---	Wall Mounted Lamp on Balconies. Fixing point 2100 mm from FFL.
---	LED light strip integrated into metal handrails shown indicatively.

Note:
 Movement Joints on 'Inside Corners' setting out, refer to Reference Plans under 0010 Series.
 RWP Plates, Brick Joints and Wall Lamps on Balconies setting out needs to be read together with 0010 Series and 3600 Series.

04	07.02.19	Lights added/deleted/moved as per client comments, see revision clouds; LED strip incorporated on handrails, see revision clouds; bottom grilles have moved down, see revision clouds; MJ amended as per Client and Structural Engineer comments. Notes added on MJ in order to clarify real position; Brick Joints/Wall Lamps/RWP plates have been incorporated on Balconies; Key and Notes have been updated, see revision clouds.	AO
03	12.12.18	Movement joints added as per Walsh drawings; Sliding doors into balconies revised as per client change; General updates in line with updates on external openings.	AO
02	16.02.18	General updates as per revision clouds, material key added to the elevations.	GF
01	13.10.17	Stage 04 Main Building Submission	GF
-	17.05.17	Stage 03 Main Building Pack	GF
REV	DATE	NOTES	INT

STAGE 05 - CONSTRUCTION

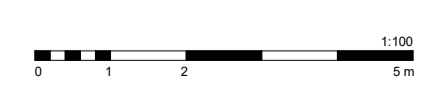
HUTCHINSON & PARTNERS
 3-14 The Record Hall, 16-16A Baldwin's Garden, London, EC1N 7RJ
 1.020 3176 8192 e.info@hutchinsonandpartners.com w.www.hutchinsonandpartners.com

JOB TITLE
Stanley Sidings, 101 Camley Street, Camden

DRAWING TITLE / LOCATION
South Block Envelope - Call outs

DRAWN BY	CHECKED	SCALE	STATUS
MH	DMV	1:100@A1 / 1:200@A3	STAGE 05
PROJECT	DRAWING NO		REVISION
16022	S AL 0020 005		04

CLIENT



All dimensions are in mm unless otherwise stated
 All dimensions to be verified on site before proceeding with the work
 Any discrepancies to be notified in writing to architect immediately
 All boundaries indicative only and to be confirmed by others



South Block - NE Elevation Upper

NOTE
 Contractor drawings and samples to be submitted for approval prior to fabrication.
 All dimensions are in millimeters unless otherwise noted.
 All dimensions are to be checked on site and any discrepancies reported to the Architect.

SSL – Structural Slab Level
 SFL – Screed Floor Level – Top of the Screed
 FFL – Finish Floor Level (including finish eg: carpet or tiles)

This drawing must be read in conjunction with all relevant Specifications and Consultant Drawings. Specific drawing information can be found under the following drawing series:

- MBR - 101 Facing Brickwork Randers Teg1 160 Ultima
- MBR - 112 Facing Brickslip Soldier Course Randers Teg1 160 Ultima
- BAL - 102 Frameless Glass Balustrade
- BAL - 112 Metal Balustrade RAL 9005 Matt
- EWS - 162 Metal Panel RAL 9005 Matt
- EWS - 142 Metal Panel with Louvre RAL 9005 Matt
- EWS - 201 Metal Panel Cladding, Penthouse
- EWS - 501 Metal Profile RAL 9005 Matt
- EXT - 302 Privacy Screens RAL 9005 Matt. Mesh and profile TBC by the employer.
- EWS - 721 White Render
- AMW - 311/312 Enclosure for services equipment RAL 9005 Matt. Profile TBC by the employer.
- Fire Compartment. Refer to the Engineer's Drawings.
- Indicative Brick Movement Joint. TBC by Specialist.
- Indicative Brick Joint aligned with brick soffit on balconies.
- Sparrow Nest Box W430 x H245 x D200 mm
- Swift Nest Box W980 x H150 x D150 mm
- Enclosed Bat Box (Large) W215 x H290 x D105 mm
- Wall Mounted Lamp 1869LM H265 mm Diameter 140 mm
- Wall Mounted Lamp 133LM H170 mm Diameter 70 mm
- Wall Mounted Lamp 733LM - Road Asymmetric - H265 mm Diameter 140 mm
- Wall Mounted, Lowe Pole 319LM H320 x W150 mm
- Wall Mounted Lamp on Balconies. Fixing point 2100 mm from FFL.
- LED light strip integrated into metal handrails shown indicatively.

Note:
 Movement Joints on 'Inside Corners' setting out, refer to Reference Plans under 0010 Series.
 RWP Plates, Brick Joints and Wall Lamps on Balconies setting out needs to be read together with 0010 Series and 3600 Series.

REV	DATE	NOTES	INT
04	07.02.19	Lights added/deleted/moved as per client comments, see revision clouds; LED strip incorporated on handrails, see revision clouds; bottom grilles have moved down, see revision clouds; MJ amended as per Client and Structural Engineer comments. Notes added on MJ in order to clarify real position; Brick Joints/Wall Lamps/RWP plates have been incorporated on Balconies; Key and Notes have been updated, see revision clouds.	AO
03	12.12.18	Movement joints added as per Walsh drawings; Sliding doors into balconies revised as per client change; General updates in line with updates on external openings.	AO
02	16.02.18	General updates as per revision clouds, material key added to the elevations.	GF
01	13.10.17	Stage 04 Main Building Submission	GF
-	17.05.17	Stage 03 Main Building Pack	GF

STAGE 05 - CONSTRUCTION

HUTCHINSON & PARTNERS
 3 14 The Record Hall, 16-16A Baldwin's Garden, London, EC1N 7RJ
 1 020 3176 8192 e. info@hutchinsonandpartners.com w. www.hutchinsonandpartners.com

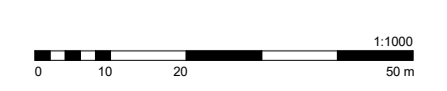
JOB TITLE
Stanley Sidings, 101 Camley Street, Camden

DRAWING TITLE / LOCATION
South Block Envelope - NE Elevation

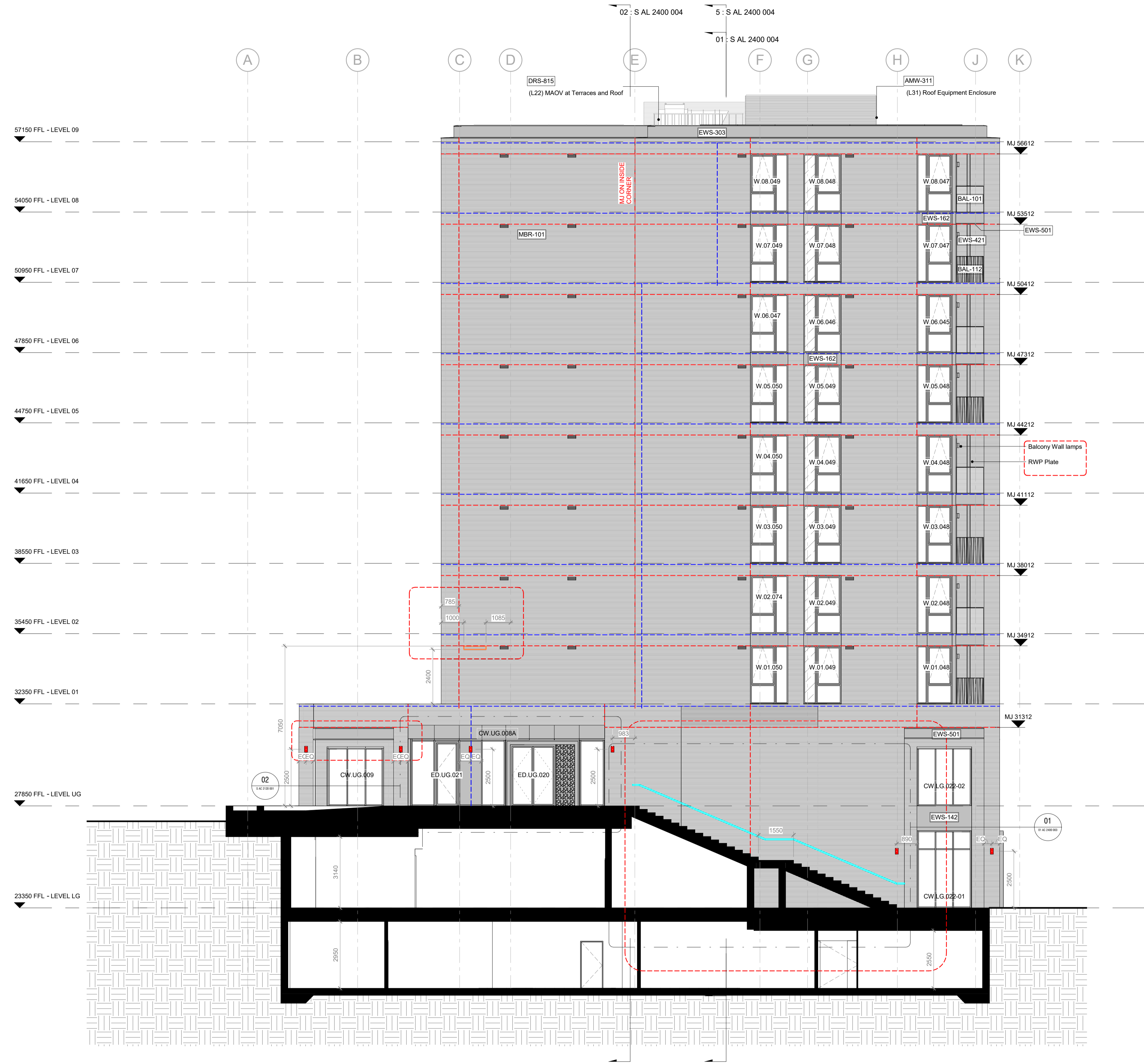
DRAWN BY	CHECKED	SCALE	STATUS
MH	DMV	1:100@A1 / 1:200@A3	STAGE 05
PROJECT	DRAWING NO	REVISION	
16022	S AL 0020 002	04	

CLIENT

© 2018 HUTCHINSON & PARTNERS Limited



All dimensions are in mm unless otherwise stated
 All dimensions to be verified on site before proceeding with the work
 Any discrepancies to be notified in writing to architect immediately
 All boundaries indicative only and to be confirmed by others



NOTE
 Contractor drawings and samples to be submitted for approval prior to fabrication.
 All dimensions are in millimeters unless otherwise noted.
 All dimensions are to be checked on site and any discrepancies reported to the Architect.

SSL – Structural Slab Level
 SFL – Screed Floor Level – Top of the Screed
 FFL – Finish Floor Level (including finish eg: carpet or tiles)

This drawing must be read in conjunction with all relevant Specifications and Consultant Drawings. Specific drawing information can be found under the following drawing series:

- MBR - 101 Facing Brickwork Randers Teg1 160 Ultima
- MBR - 102 Facing Brickslip Soldier Course Randers Teg1 160 Ultima
- BAL - 102 Frameless Glass Balustrade
- BAL - 112 Metal Balustrade RAL 9005 Matt
- EWS - 162 Metal Panel RAL 9005 Matt
- EWS - 142 Metal Panel with Louvre RAL 9005 Matt
- EWS - 201 Metal Panel Cladding, Penthouse
- EWS - 501 Metal Profile RAL 9005 Matt
- EXT - 302 Privacy Screens RAL 9005 Matt. Mesh and profile TBC by the employer.
- EWS - 721 White Render
- AMW - 311/312 Enclosure for services equipment RAL 9005 Matt. Profile TBC by the employer.
- Fire Compartment. Refer to the Engineer's Drawings.
- Indicative Brick Movement Joint. TBC by Specialist.
- Indicative Brick Joint aligned with brick soffit on balconies.
- Sparrow Nest Box W430 x H245 x D200 mm
- Swift Nest Box W980 x H150 x D150 mm
- Enclosed Bat Box (Large) W215 x H290 x D105 mm
- Wall Mounted Lamp 1869LM H265 mm Diameter 140 mm
- Wall Mounted Lamp 133LM H170 mm Diameter 70 mm
- Wall Mounted Lamp 733LM - Road Asymmetric - H265 mm Diameter 140 mm
- Wall Mounted, Lowe Pole 319LM H320 x W150 mm
- Wall Mounted Lamp on Balconies. Fixing point 2100 mm from FFL.
- LED light strip integrated into metal handrails shown indicatively.

Note:
 Movement Joints on 'Inside Corners' setting out, refer to Reference Plans under 0010 Series.
 RWP Plates, Brick Joints and Wall Lamps on Balconies setting out needs to be read together with 0010 Series and 3600 Series.

REV	DATE	NOTES	INT
04	07.02.19	Lights added/deleted/moved as per client comments, see revision clouds; LED strip incorporated on handrails, see revision clouds; bottom grilles have moved down, see revision clouds; MJ amended as per Client and Structural Engineer comments. Notes added on MJ in order to clarify real position; Brick Joints/Wall Lamps/RWP plates have been incorporated on Balconies; Key and Notes have been updated, see revision clouds.	AO
03	12.12.18	Movement joints added as per Walsh drawings; Sliding doors into balconies revised as per client change. General updates in line with updates on external openings.	AO
02	16.02.18	General updates as per revision clouds, material key added to the elevations.	GF
01	13.10.17	Stage 04 Main Building Submission	GF
-	17.05.17	Stage 03 Main Building Pack	GF

STAGE 05 - CONSTRUCTION

HUTCHINSON & PARTNERS

3 14 The Record Hall, 16-16A Baldwin's Garden, London, EC1N 7RJ
 1.020 3176 8192 e.info@hutchinsonandpartners.com w.www.hutchinsonandpartners.com

JOB TITLE
Stanley Sidings, 101 Camley Street, Camden

DRAWING TITLE / LOCATION
South Block Envelope - NW Elevation

DRAWN BY	CHECKED	SCALE	STATUS
MH	DMV	1:100@A1 / 1:200@A3	STAGE 05
PROJECT	DRAWING NO	REVISION	
16022	S AL 0020 001	04	

CLIENT



South Block - NW Elevation



All dimensions are in mm unless otherwise stated
 All dimensions to be verified on site before proceeding with the work
 Any discrepancies to be notified in writing to architect immediately
 All boundaries indicative only and to be confirmed by others



South Block - SE Elevation

NOTE
 Contractor drawings and samples to be submitted for approval prior to fabrication.
 All dimensions are in millimeters unless otherwise noted.
 All dimensions are to be checked on site and any discrepancies reported to the Architect.

SSL – Structural Slab Level
 SFL – Scribed Floor Level – Top of the Scribed
 FFL – Finish Floor Level (including finish eg: carpet or tiles)

This drawing must be read in conjunction with all relevant Specifications and Consultant Drawings. Specific drawing information can be found under the following drawing series:

- MBR - 101 Facing Brickwork Randers Teg1 160 Ultima
- MBR - 112 Facing Brickslip Soldier Course Randers Teg1 160 Ultima
- MBR - 102 Frameless Glass Balustrade
- BAL - 112 Metal Balustrade RAL 9005 Matt
- EWS - 162 Metal Panel RAL 9005 Matt
- EWS - 142 Metal Panel with Louvre RAL 9005 Matt
- EWS - 201 Metal Panel Cladding, Penthouse
- EWS - 501 Metal Profile RAL 9005 Matt
- EXT - 302 Privacy Screens RAL 9005 Matt. Mesh and profile TBC by the employer.
- EWS - 721 White Render
- AMW - 311/312 Enclosure for services equipment RAL 9005 Matt. Profile TBC by the employer.
- Fire Compartment. Refer to the Engineer's Drawings.
- Indicative Brick Movement Joint. TBC by Specialist.
- Indicative Brick Joint aligned with brick soffit on balconies.
- Sparrow Nest Box W430 x H245 x D200 mm
- Swift Nest Box W980 x H150 x D150 mm
- Enclosed Bat Box (Large) W215 x H290 x D105 mm
- Wall Mounted Lamp 1869LM H265 mm Diameter 140 mm
- Wall Mounted Lamp 133LM H170 mm Diameter 70 mm
- Wall Mounted Lamp 733LM - Road Asymmetric - H265 mm Diameter 140 mm
- Wall Mounted, Low Pole 319LM H320 x W150 mm
- Wall Mounted Lamp on Balconies. Fixing point 2100 mm from FFL.
- LED light strip integrated into metal handrails shown indicatively.

Note:
 Movement Joints on 'Inside Corners' setting out, refer to Reference Plans under 0010 Series.
 RWP Plates, Brick Joints and Wall Lamps on Balconies setting out needs to be read together with 0010 Series and 3600 Series.

REV	DATE	NOTES	INT
04	07.02.19	Lights added/deleted/moved as per client comments, see revision clouds; LED strip incorporated on handrails, see revision clouds; bottom grilles have moved down, see revision clouds; MJ amended as per Client and Structural Engineer comments. Notes added on MJ in order to clarify real position; Brick Joints/Wall Lamps/RWP plates have been incorporated on Balconies; Key and Notes have been updated, see revision clouds.	AO
03	12.12.18	Movement joints added as per Walsh drawings; Sliding doors into balconies revised as per client change. General updates in line with updates on external openings.	AO
02	16.02.18	General updates as per revision clouds, material key added to the elevations.	GF
01	13.10.17	Stage 04 Main Building Submission	GF
-	17.05.17	Stage 03 Main Building Pack	GF

STAGE 05 - CONSTRUCTION

HUTCHINSON & PARTNERS
 3 14 The Record Hall, 16-16A Baldwin's Garden, London, EC1N 7RJ
 1 020 3176 8192 e. info@hutchinsonandpartners.com w. www.hutchinsonandpartners.com

JOB TITLE
 Stanley Sidings, 101 Camley Street, Camden

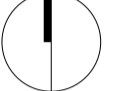
DRAWING TITLE / LOCATION
 South Block Envelope - SE Elevation

DRAWN BY	CHECKED	SCALE	STATUS
MH	DMV	1:100@A1 / 1:200@A3	STAGE 05
PROJECT	DRAWING NO	REVISION	
16022	S AL 0020 003	04	

CLIENT



All dimensions are in mm unless otherwise stated
 All dimensions to be verified on site before proceeding with the work
 Any discrepancies to be notified in writing to architect immediately
 All boundaries indicative only and to be confirmed by others



NOTE
 Contractor drawings and samples to be submitted for approval prior to fabrication.
 All dimensions are in millimeters unless otherwise noted.
 All dimensions are to be checked on site and any discrepancies reported to the Architect.

SSL – Structural Slab Level
 SFL – Scribed Floor Level – Top of the Scribed
 FFL – Finish Floor Level (including finish eg: carpet or tiles)

This drawing must be read in conjunction with all relevant Specifications and Consultant Drawings. Specific drawing information can be found under the following drawing series:

- MBR - 101 Facing Brickwork Randers Teg1 160 Ultima
- MBR - 112 Facing Brickslip Soldier Course Randers Teg1 160 Ultima
- BAL - 102 Frameless Glass Balustrade
- BAL - 112 Metal Balustrade RAL 9005 Matt
- EWS - 162 Metal Panel RAL 9005 Matt
- EWS - 142 Metal Panel with Louvre RAL 9005 Matt
- EWS - 201 Metal Panel Cladding, Penthouse
- EWS - 501 Metal Profile RAL 9005 Matt
- EXT - 302 Privacy Screens RAL 9005 Matt. Mesh and profile TBC by the employer.
- EWS - 721 White Render
- AMW - 311/312 Enclosure for services equipment RAL 9005 Matt. Profile TBC by the employer.
- Fire Compartment. Refer to the Engineer's Drawings.
- - - Indicative Brick Movement Joint. TBC by Specialist.
- - - Indicative Brick Joint aligned with brick soffit on balconies.
- Sparrow Nest Box W430 x H245 x D200 mm
- Swift Nest Box W980 x H150 x D150 mm
- Enclosed Bat Box (Large) W215 x H290 x D105 mm
- Wall Mounted Lamp 1869LM H265 mm Diameter 140 mm
- Wall Mounted Lamp 133LM H170 mm Diameter 70 mm
- Wall Mounted Lamp 733LM - Road Asymmetric - H265 mm Diameter 140 mm
- Wall Mounted, Lowe Pole 319LM H320 x W150 mm
- Wall Mounted Lamp on Balconies. Fixing point 2100 mm from FFL.
- LED light strip integrated into metal handrails shown indicatively.

Note:
 Movement Joints on 'Inside Corners' setting out, refer to Reference Plans under 0010 Series.
 RWP Plates, Brick Joints and Wall Lamps on Balconies setting out needs to be read together with 0010 Series and 3600 Series.

REV	DATE	NOTES	INT
04	07.02.19	Lights added/deleted/moved as per client comments, see revision clouds; LED strip incorporated on handrails, see revision clouds; bottom grilles have moved down, see revision clouds; MJ amended as per Client and Structural Engineer comments. Notes added on MJ in order to clarify real position; Brick Joints/Wall Lamps/RWP plates have been incorporated on Balconies; Key and Notes have been updated, see revision clouds.	AO
03	12.12.18	Movement joints added as per Walsh drawings; Sliding doors into balconies revised as per client change. General updates in line with updates on external openings.	AO
02	16.02.18	General updates as per revision clouds, material key added to the elevations.	GF
01	13.10.17	Stage 04 Main Building Submission	GF
-	17.05.17	Stage 03 Main Building Pack	GF

STAGE 05 - CONSTRUCTION

HUTCHINSON & PARTNERS
 3 14 The Record Hall, 16-16A Baldwin's Garden, London, EC1N 7RJ
 1.020 3176 8192 e.info@hutchinsonandpartners.com w.www.hutchinsonandpartners.com

JOB TITLE
Stanley Sidings, 101 Camley Street, Camden

DRAWING TITLE / LOCATION
South Block Envelope - SW Elevation

DRAWN BY	CHECKED	SCALE	STATUS
MH	DMV	1:100@A1 / 1:200@A3	STAGE 05
PROJECT	DRAWING NO	REVISION	
16022	S AL 0020 004	04	

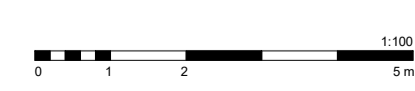
CLIENT



© 2018 HUTCHINSON & PARTNERS Limited



South Block - SW Elevation



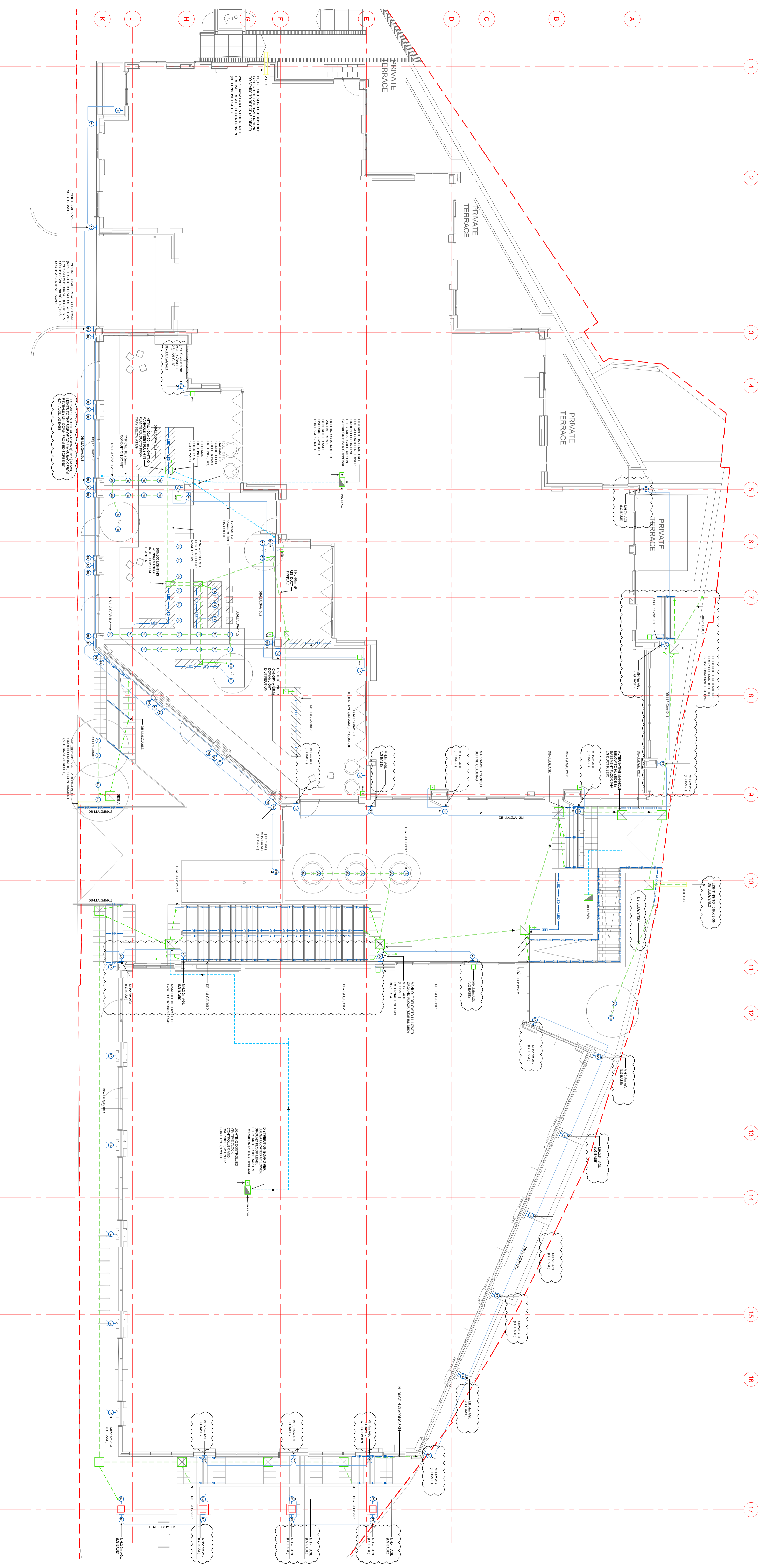
This drawing is to be read in conjunction with all standard details available to comply with current building regulations.

NOTES

- 1. DO NOT SCALE FROM THIS DRAWING
- 2. THE ELECTRICAL SERVICES AND FIT IS INDICATIVE FINAL CONSULTANTS SETTING OUT - THIS IS A SERVICE DRAWING
- 3. FOR FULL DETAILS REFER TO CDD DRAWING NO. 11
- 4. NOT TO BE USED FOR INSTALLATION PURPOSES.

LEGEND

- LIGHTNING SURGE PROTECTION SYSTEM (LSPS)
- HUB AND RING (H&R) LIGHTNING SURGE PROTECTION SYSTEM (LSPS)
- HUB AND RING (H&R) LIGHTNING SURGE PROTECTION SYSTEM (LSPS) - RESISTIVE
- HUB AND RING (H&R) LIGHTNING SURGE PROTECTION SYSTEM (LSPS) - INDUCTIVE
- HUB AND RING (H&R) LIGHTNING SURGE PROTECTION SYSTEM (LSPS) - CAPACITIVE
- HUB AND RING (H&R) LIGHTNING SURGE PROTECTION SYSTEM (LSPS) - RESISTIVE/INDUCTIVE/CAPACITIVE
- HUB AND RING (H&R) LIGHTNING SURGE PROTECTION SYSTEM (LSPS) - RESISTIVE/INDUCTIVE/CAPACITIVE/RESISTIVE
- HUB AND RING (H&R) LIGHTNING SURGE PROTECTION SYSTEM (LSPS) - RESISTIVE/INDUCTIVE/CAPACITIVE/RESISTIVE/INDUCTIVE
- HUB AND RING (H&R) LIGHTNING SURGE PROTECTION SYSTEM (LSPS) - RESISTIVE/INDUCTIVE/CAPACITIVE/RESISTIVE/INDUCTIVE/CAPACITIVE
- HUB AND RING (H&R) LIGHTNING SURGE PROTECTION SYSTEM (LSPS) - RESISTIVE/INDUCTIVE/CAPACITIVE/RESISTIVE/INDUCTIVE/CAPACITIVE/RESISTIVE
- HUB AND RING (H&R) LIGHTNING SURGE PROTECTION SYSTEM (LSPS) - RESISTIVE/INDUCTIVE/CAPACITIVE/RESISTIVE/INDUCTIVE/CAPACITIVE/RESISTIVE/INDUCTIVE
- HUB AND RING (H&R) LIGHTNING SURGE PROTECTION SYSTEM (LSPS) - RESISTIVE/INDUCTIVE/CAPACITIVE/RESISTIVE/INDUCTIVE/CAPACITIVE/RESISTIVE/INDUCTIVE/CAPACITIVE/RESISTIVE



CHALK FARM DEVELOPMENTS
101 CAMLEY STREET
CAMDEN

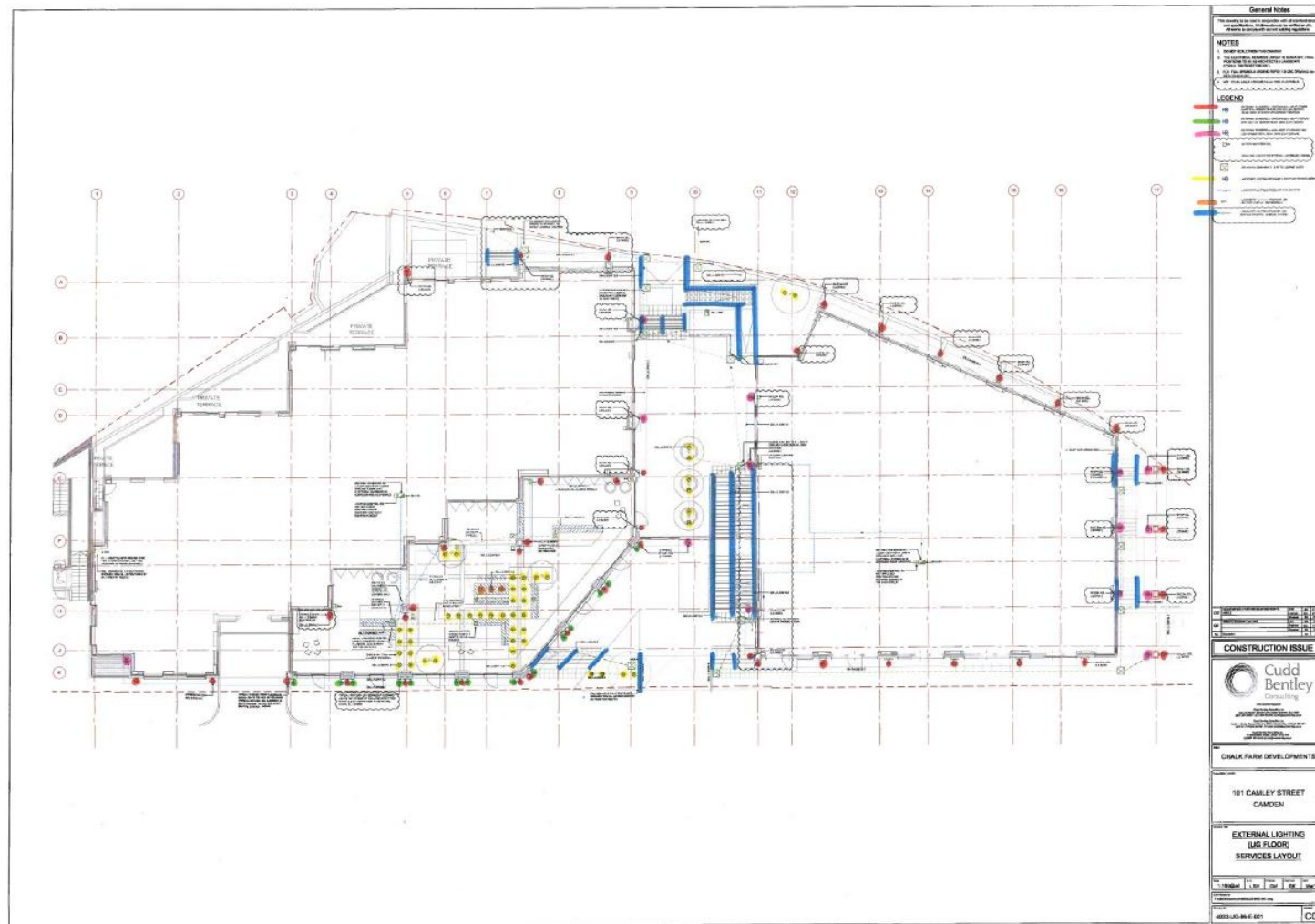
EXTERNAL LIGHTING
(UG FLOOR)
SERVICES LAYOUT



Issue	1:100@B0	Sheet	CM	Of	CK	Rev	MW/T7	
Drawn by	LSH						Checked by	CM
Checked by	1:48037/Development/40351/UG-FR-001.dwg						Scale	MW/T7
Drawn by	4933-UG-96-E-001						Issue	C02



Cudd Bentley Consulting



Registered Office: 101 Camley Street, Camden, London, N1C 4AG
Tel: 020 7333 5555
Fax: 020 7333 5556
Email: sales@cuddbentley.com
www.cuddbentley.com



Lighting within the Public Realm






- 

EXTERNAL CYLINDRICAL UP/DOWN WALL LIGHT: POWER ELLIPTICAL (SIDEWAYS LENS) IP65 26W LED, NARROW BEAM, 3000K (STD:50/50 UP/DOWN DISTRIBUTION)

- 

EXTERNAL CYLINDRICAL UP/DOWN WALL LIGHT: FEATURE IP65 3.8W LED, NARROW BEAM, 3000K (1/3 UP / 2/3 DOWN)

- 

EXTERNAL CYLINDRICAL WALL LIGHT UP / DOWN: 17.5W LED ASYMMETRICAL BEAM, 3000K (1/3 UP / 2/3 DOWN)

- 

LANDSCAPE LIGHTING SPECIALIST LED UPLIGHTER IN PLANTER

- 
(LP) LANDSCAPE LIGHTING SPECIALIST LED LIGHTING PENDANT (ON PERGOLA)

- 

LANDSCAPE LIGHTING SPECIALIST LED INTEGRATED METAL HANDRAIL SYSTEM

(Full marked up drawing & data sheets with keys attached)

General Notes

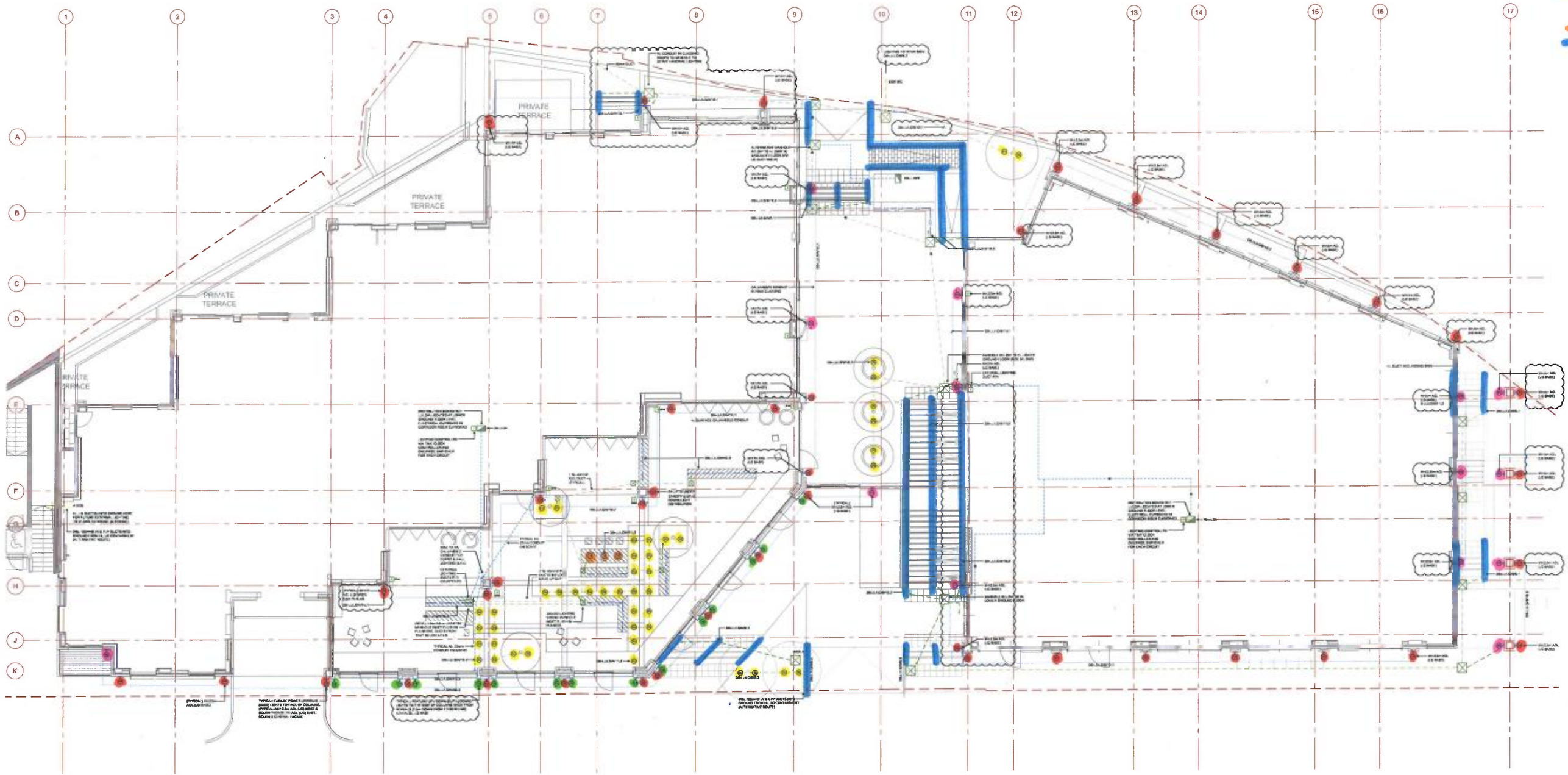
This drawing to be read in conjunction with all standard details and specifications. All dimensions to be verified on site. All works to comply with current building regulations.

NOTES

- DO NOT SCALE FROM THIS DRAWING
- THE ELECTRICAL SERVICES LAYOUT IS INDICATIVE. FINAL POSITIONS TO BE AS ARCHITECT'S & LANDSCAPE CONSULTANTS SETTING OUT.
- FOR FULL SYMBOLS LEGEND REFER TO C&E DRAWING: NOT TO BE USED FOR ELECTRICAL SERVICES

LEGEND

- 1.00m DUCT FOR EXTERNAL LIGHTING WIRING
- 2.00m DUCT FOR EXTERNAL LIGHTING WIRING
- 3.00m DUCT FOR EXTERNAL LIGHTING WIRING
- 4.00m DUCT FOR EXTERNAL LIGHTING WIRING
- 5.00m DUCT FOR EXTERNAL LIGHTING WIRING
- 6.00m DUCT FOR EXTERNAL LIGHTING WIRING
- 7.00m DUCT FOR EXTERNAL LIGHTING WIRING
- 8.00m DUCT FOR EXTERNAL LIGHTING WIRING
- 9.00m DUCT FOR EXTERNAL LIGHTING WIRING
- 10.00m DUCT FOR EXTERNAL LIGHTING WIRING
- 11.00m DUCT FOR EXTERNAL LIGHTING WIRING
- 12.00m DUCT FOR EXTERNAL LIGHTING WIRING
- 13.00m DUCT FOR EXTERNAL LIGHTING WIRING
- 14.00m DUCT FOR EXTERNAL LIGHTING WIRING
- 15.00m DUCT FOR EXTERNAL LIGHTING WIRING
- 16.00m DUCT FOR EXTERNAL LIGHTING WIRING
- 17.00m DUCT FOR EXTERNAL LIGHTING WIRING



NO.	DESCRIPTION	DATE	BY	CHECKED BY
1	ISSUED FOR TENDER	15/03/17	CM	GK
2	REVISED FOR CONSTRUCTION	15/03/17	CM	GK
3	REVISED FOR CONSTRUCTION	15/03/17	CM	GK
4	REVISED FOR CONSTRUCTION	15/03/17	CM	GK

CONSTRUCTION ISSUE

Cudd Bentley Consulting

Cudd Bentley Consulting Ltd
 101 Camley Street, Camden, London, N1C 4JH
 Tel: +44 (0)20 7493 4000
 Fax: +44 (0)20 7493 4001
 Email: info@cuddbentley.com

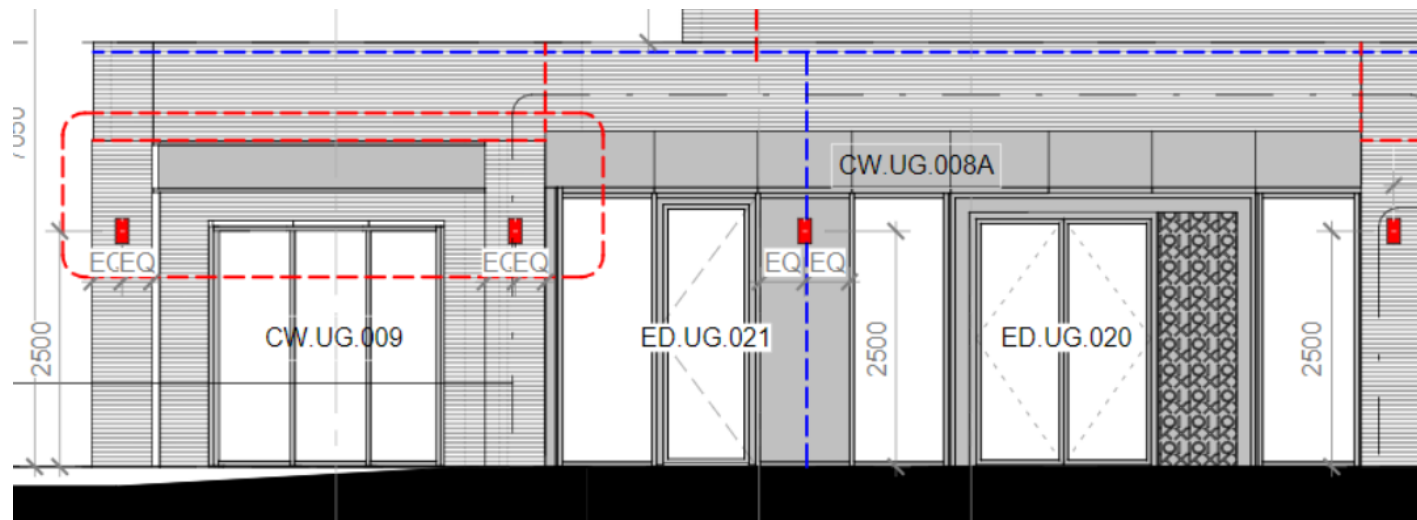
CHALK FARM DEVELOPMENTS

101 CAMLEY STREET
CAMDEN

EXTERNAL LIGHTING (UG FLOOR) SERVICES LAYOUT

Scale:	1:100@A0	Drawn:	LSH	Checked:	CM	Approved:	GK	Date:	Mar'17
Drawn by:	LSH								
Checked by:	CM								
Approved by:	GK								
Project No:	4933-UG-96-E-001								
Sheet No:	C02								

Lighting on Entrance areas



Wall Mounted Lamp 1869LM H265 mm Diameter 140 mm

Concord

Scope Wall

SCOPE/WALL 1 256LM DECORATIVE DE LED 3K AL
4069751



Product features

- Wall mounted LED luminaire, extruded aluminium, 256mm, 6W, 43lm/W, 3000K, CRI80+, non dimmable, IP65, IK08, (ØxD) Ø70x200mm, 3 step MacAdam ellipse, 1.3kg, Class II, 220-240V, A++ A++

(Full marked up drawing & data sheets with keys attached)

Lighting on Entrance areas



Wall Mounted Lamp 1869LM H265 mm Diameter 140 mm

Concord

Scope Wall
SCOPE/WALL 1 256LM DECORATIVE DE LED 3K AL
4069751



Product features

- Wall mounted LED luminaire, extruded aluminium, 256lm, 6W, 43lm/W, 3000K, CR180+, non dimmable, IP65, IK08, (ØxD) Ø70x200mm, 3 step MacAdam ellipse, 1.3kg, Class II, 220-240V, A++ A+A



Wall Mounted Lamp 133LM H170 mm Diameter 70 mm

Concord

Scope Wall
SCOPE/WALL 1 133LM NARROW LED 4KAL
4069741

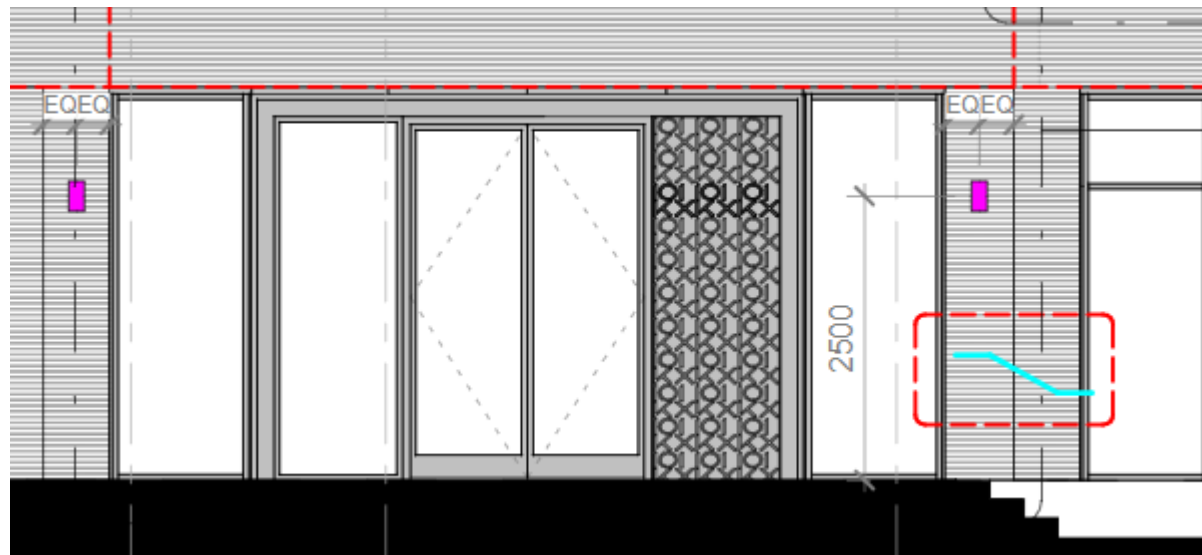


Product features

- Wall mounted LED luminaire, extruded aluminium, 133lm, 3.8W, 35lm/W, 4000K, CR180+, narrow, non dimmable, IP65, IK08, (ØxD) Ø70x200mm, 3 step MacAdam ellipse, 1.3kg, Class II, 220-240V, A++ A+A

(Full marked up drawing & data sheets with keys attached)

Lighting on Entrance areas



Wall Mounted Lamp 733LM - Road Asymmetric - H265 mm Diameter 140 mm

Concord

Scope Wall
SCOPE/WALL2 733LM ROAD ASYMMETRIC LED 4K AL
4069764



Product features
• Wall mounted LED luminaire extruded aluminium, 773mm, 17.5W, 44lm/W, 4000K, CR180+, extensive/road emission, non dimmable, IP66, IK08, (ØxD) Ø140x265mm, 3 step MacAdam ellipse, 4.7kg, Class I, 220-240V, A++ A+ A

(Full marked up drawing & data sheets with keys attached)