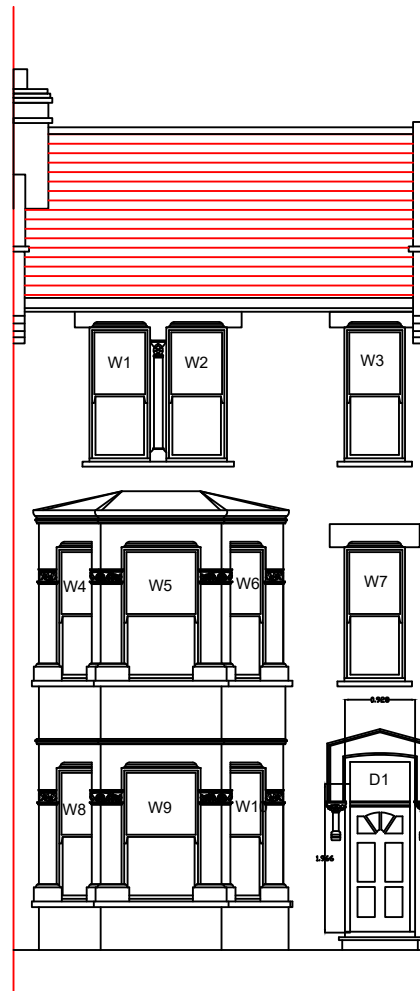


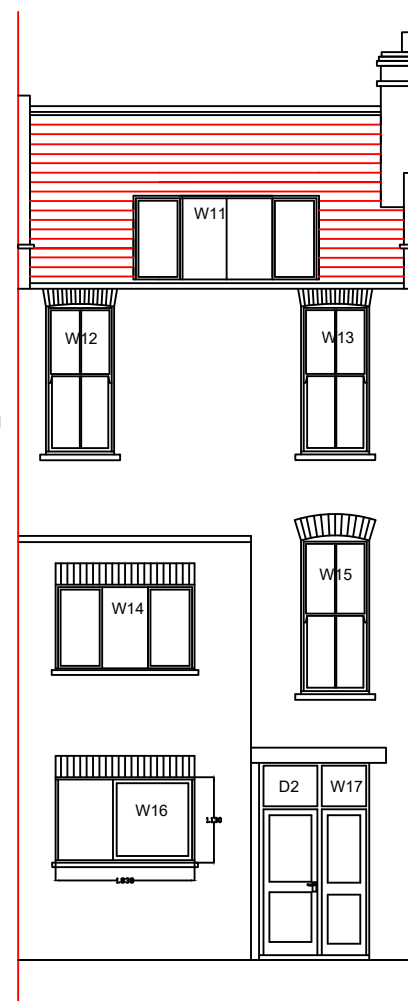
PROPOSED ARE TIMBER WINDOWS LIKE FOR LIKE SLIMLINE DOUBLE GLAZED TO MATCH EXISTING



FRONT ELEVATION
(Proposed)

Proposed are replacement for single glazed sash window to like for like timber slim-line Double glazed sash window.

PROPOSED ARE TIMBER WINDOWS LIKE FOR LIKE SLIMLINE DOUBLE GLAZED TO MATCH EXISTING



REAR ELEVATION
(Proposed)

Proposed are replacement for single glazed sash window to like for like timber slim-line Double glazed sash window.

Proposed are replacement of the single glazed sash and aluminium casement windows to like for like timber slim-line Double glazed sash window.

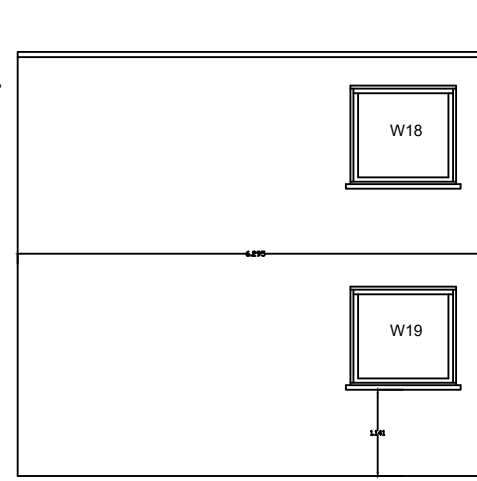
PROPOSALS:

The proposals are for replacement of the existing timber windows at the front, rear and side of the property.

The proposed windows are timber like for like double glazed Slim-line units to current building regulations as per attached details.

The fenestration will be followed to the front, side and rear elevation.

PROPOSED ARE TIMBER WINDOWS LIKE FOR LIKE SLIMLINE DOUBLE GLAZED TO MATCH EXISTING

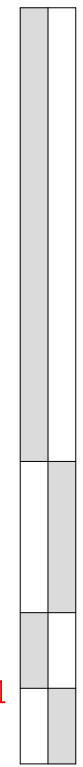


SIDE ELEVATION
(Proposed)

Proposed are replacement of the single glazed aluminium casement windows to like for like timber slim-line Double glazed sash window.

Notes:

10 Meter



1:100



EMPLOYER'S AGENTS & PROJECT MANAGERS
UNIT A COURT HOUSE, 11A HIGH STREET
BARNET EN5 5UJ
TEL: 020 8446 5537
E-MAIL: Planning@walkercc.co.uk

TITLE
PROPOSED ELEVATIONS

PROJECT
32 Gascony Road

CLIENT
GENESIS HOUSING ASSOCIATION / KIER

SCALE: AS IDENTIFIED
CAD FILE: -
DATE: 20.09.18
DRAWN BY: RBM
CHECKED:

PROJECT NO.	DRAWING NO.	REVISION
4250	4250/WM/02	1