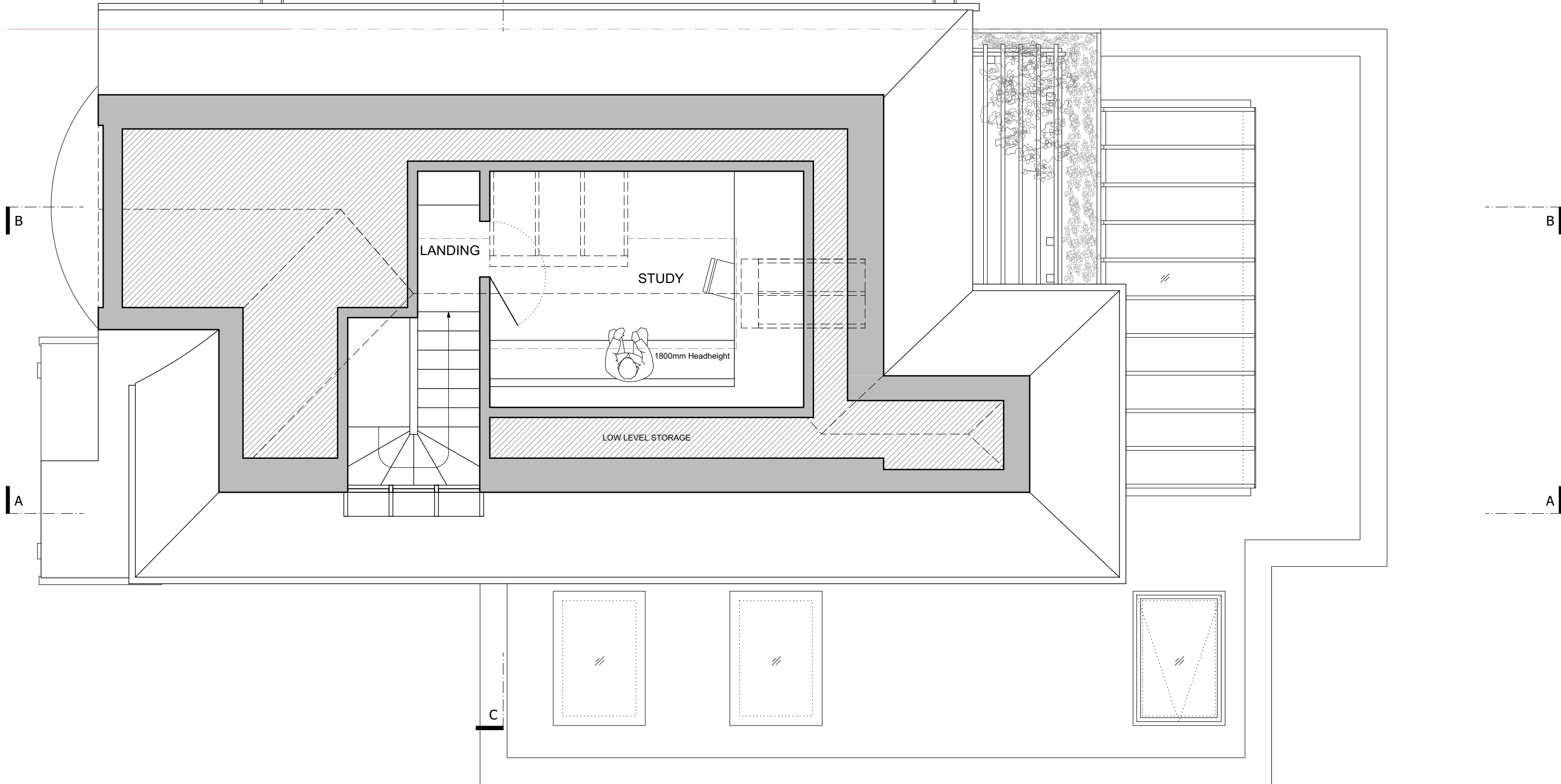
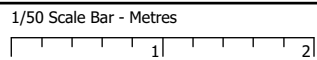


33 HILLWAY
ADJOINING PROPERTY



- Notes
- All contents copyright.
 - Do not scale.
 - Based on survey by others.
 - Contractor to verify all dimensions on site.
 - Read in conjunction with all relevant Architect's, Consultant's & Supplier's information.
 - Report any discrepancies to the Architect.



North - Indicative Only



Revisions

- A - 21/08/18 - Updated For Planning
 - B - 01/10/18 - Updated For Planning
 - C - 08/10/18 - Updated For Planning
 - D - 07/10/18 - Updated For Planning
- As Approved**
by Camden Planning
17th October 2018

Project **Extension & Alterations
at 35 Hillway, London
N6 6AH**

Drawing **Second Floor Plan
As Proposed**

Number	1809_A003_D	Status	Information
Scale	1/50 @ A3	Drawn	JPB
Date	06/07/18	Checked	NJK

Neil Kahawatte Architect

Unit 310
4 Fortess Road
London
NW5 2ES

020 3239 0748
mail@neilkahawatte.com
Company Number: 8530938