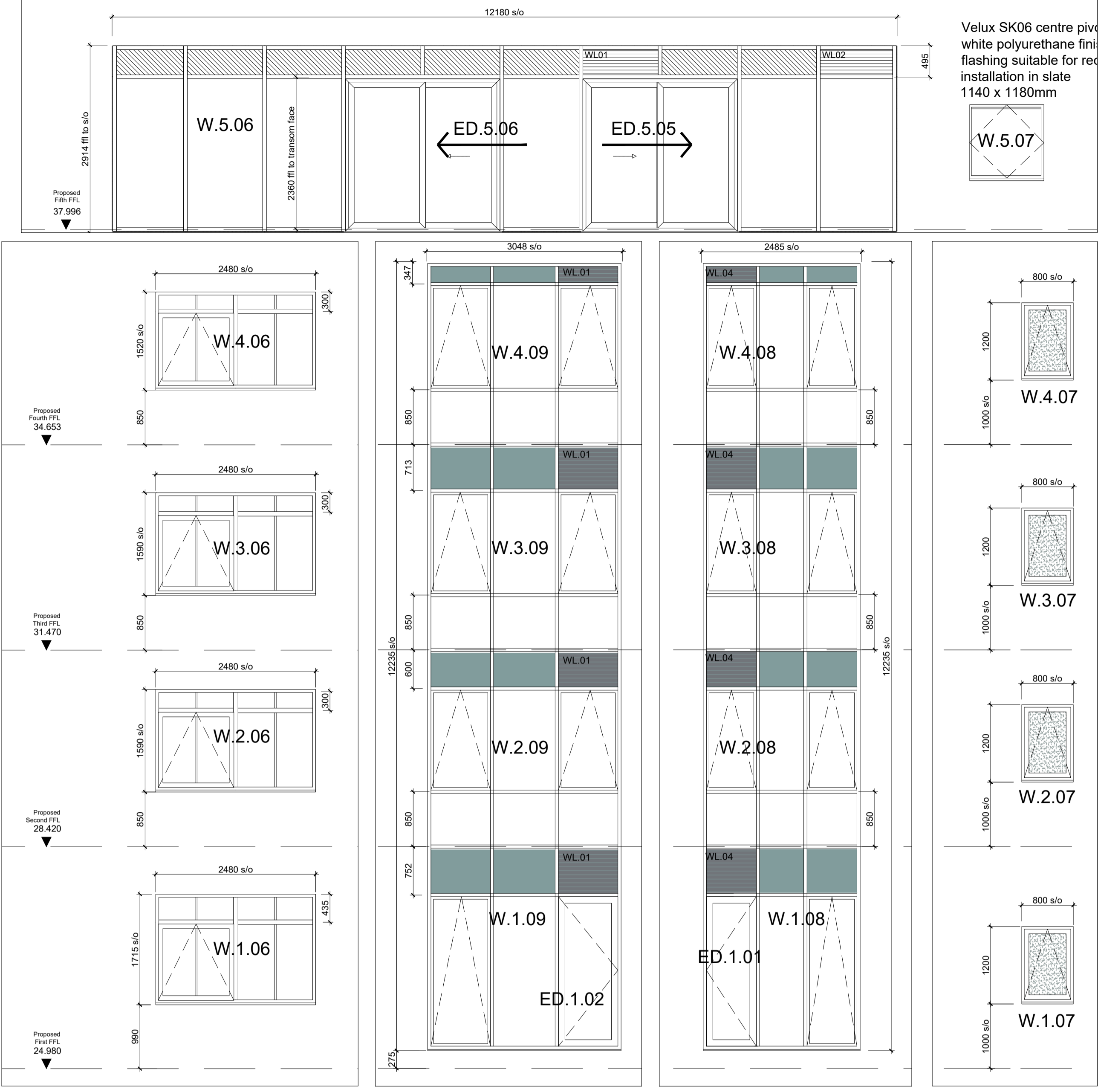


SO TBC on site



Velux SK06 centre pivot white polyurethane finish flashing suitable for installation in slate 1140 x 1180mm

**notes**

Proprietary high commercial quality aluminium framed window and door systems  
 PFC thermally broken frames, colour from RAL range.  
 Double glazed units, safety glazed as required to satisfy Part K approved document.  
 Target U Value - Not worse than 1.5W/m<sup>2</sup>K  
 All windows and doors to achieve PAS 24 locking on all opening elements  
 Door opening using side hung and combined with lift out sliding type to the curtain walling on the top floor

- Glazed in insulated PCC flat panels to ceiling voids
- Glazed in insulated PCC louvre panels to ceiling voids, to allow duct cut outs as required
- Obscure glazing into toilets
- Manifestation to large glazed screens and doors provided with applied proprietary symbols

**NOTE:**  
 For window surround details see drawing nos 416 & 417

Revision	Description	Rev By	Date
G	Glazing bars amended	-	09.04.2019
F	Update to suit IDF details	-	22.02.2019
E	Window details updated	-	25.01.2019
D	Construction issue	-	18.01.2019
C	Tender issue	-	14.09.2018
B	Updated to suit design development	-	03.09.2018
A	First issue - Pricing	-	04.05.2018

**gcp Chartered Architects**  
 architecture project management sustainable design

Suite 10, Corner 2  
 Corner Office Park  
 Crown Way  
 Warrington  
 Cheshire WA53 0BF  
 T: 0117 9670288  
 www.gcparch.co.uk

Project Title:  
 Elizabeth House  
 4-7 Fulwood Place - London

Drawing Title:  
 Window and Door schedule  
 Aluminium framed systems

Drawn By: ms Date: Mar 2018  
 Checked By: tm Scale: 1:20 @ A1  
 Drawing No: 17008/400 Rev: G  
 Status: CONSTRUCTION