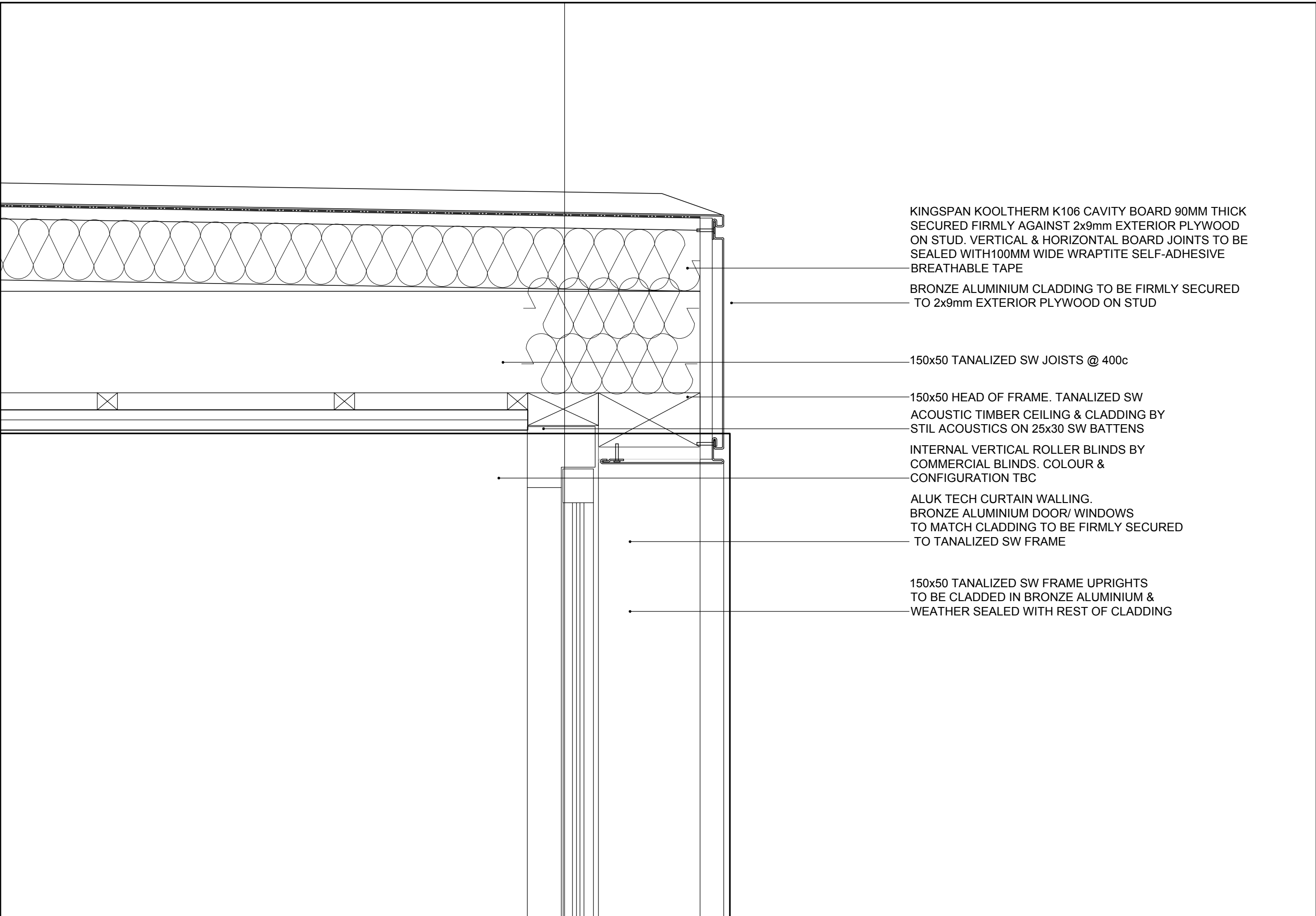
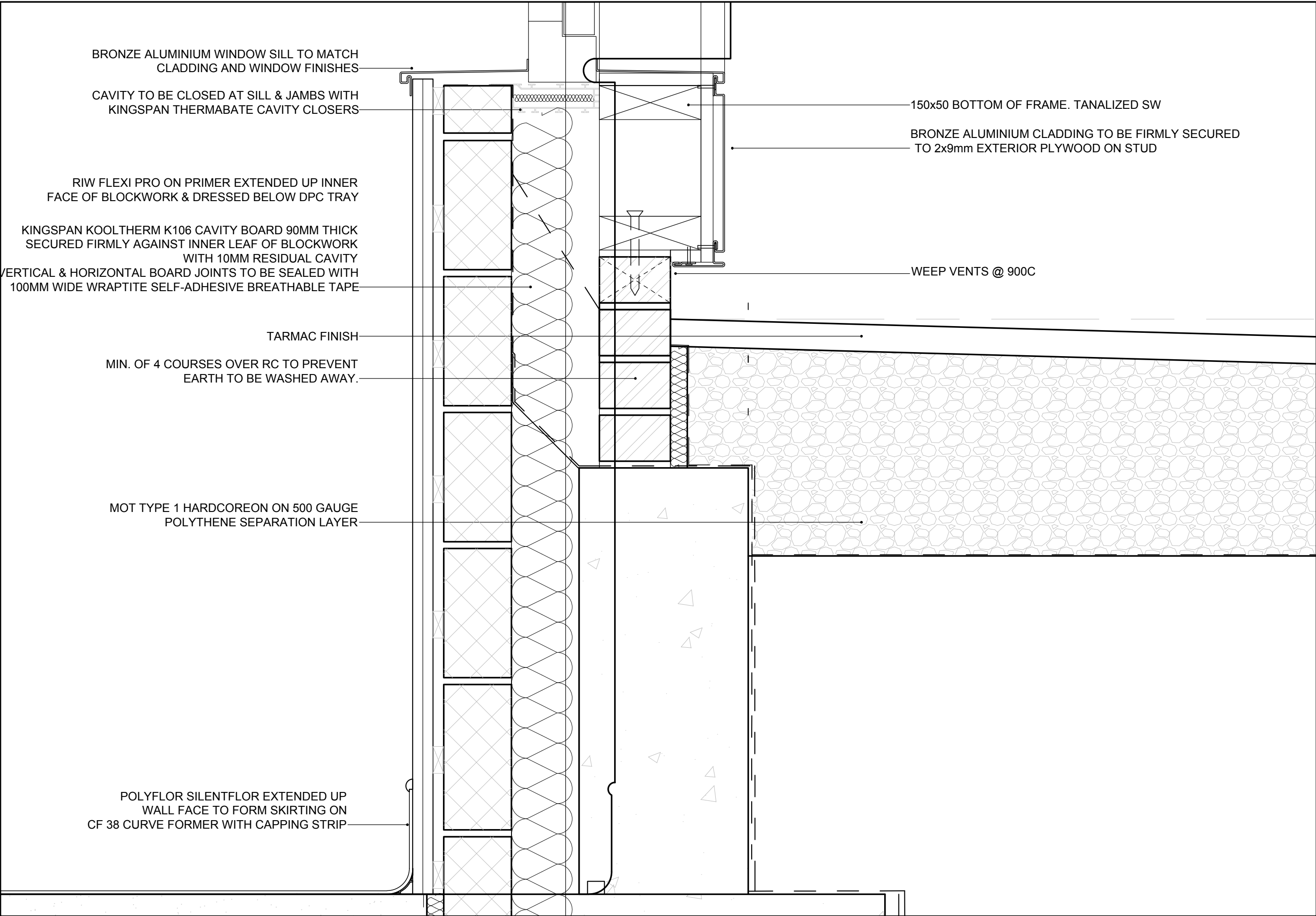


1 DINING HALL - SECTION & DETAILS
SCALE - 1:5 @ A1



WINDOW HEAD CORNER



SILL/SLAB JUNCTION DETAIL

PRELIMINARY - WIP

A MINOR AMENDMENTS TO NOTES		06/03/19 DP
Rev	Description	Date Initial

PRIME

MERIDIAN

Architects and Structural Engineers

Second Floor
26A Ganton Street
London W1F 7DZ
info@prime-meridian.co.uk

T 020 7494 3522
F 020 7494 3533

The Priory, Draycott Rd
Shepton Mallet
Somerset BA4 5HS
www.prim-meridian.co.uk

T 01749 34 66 99
F 01749 34 66 77

Client: CHANNING SCHOOL

Project: FAIRSEAT - PHASE 1
PAVILION & DINING HALL

Title: DINING HALL
VARIOUS DETAILS

Date:
Scale: AS INDICATED
Drawn: DB