

## GATES AROUND ST CRISPIN'S CLOSE

Maryon Mews



Vehicular and pedestrian gates with pronounced and pointed finials. Warning signs and security keypads are also present. Note additional presence of security bollards, which contribute to an unwelcoming appearance.



Smaller gate for Maryon Mews



Tall gates with stark finials, reinforced arms, locks and warning signs. They not only present an unwelcoming appearance, but also fill out most of the entryway's space up to the roof overhead.

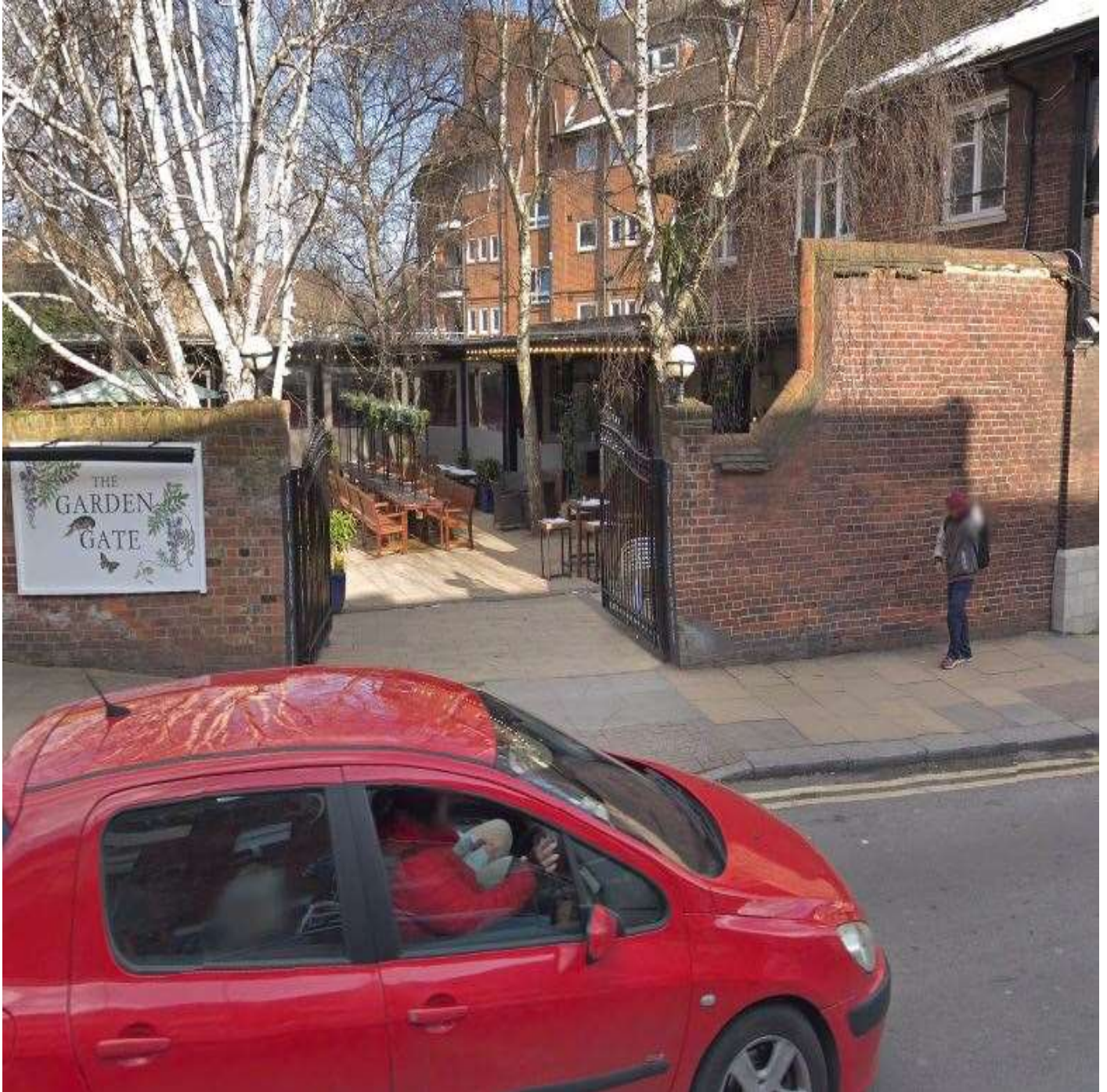
Byron Mews



Vehicular and pedestrian gates of considerable height. The vehicular gates are electric, and have a warning sign on them. The vehicular gates are set (presumably to reduce any impact on the highways from traffic entering the mews. The current proposal adopts a similar set back design.



The Garden Gate



A metal railed gate with speared finials, similar is design and appearance to the proposal.



Along Pond Street



Metal gates at both the NHS building in the foreground and at houses beyond. There are also vehicular gates with spearhead finials.



South End Close



Vehicular gates with pedestrian gate to the right. Warning signs are seen on the vehicular gate. The green sign indicates that it is a Council-managed property.



Church and School at Pond Street



Elaborate wrought iron gates for both pedestrian and vehicular entrances.



No. 1 Pond Street



Wrought iron gates, of differing design, for both vehicular and pedestrian entrances.



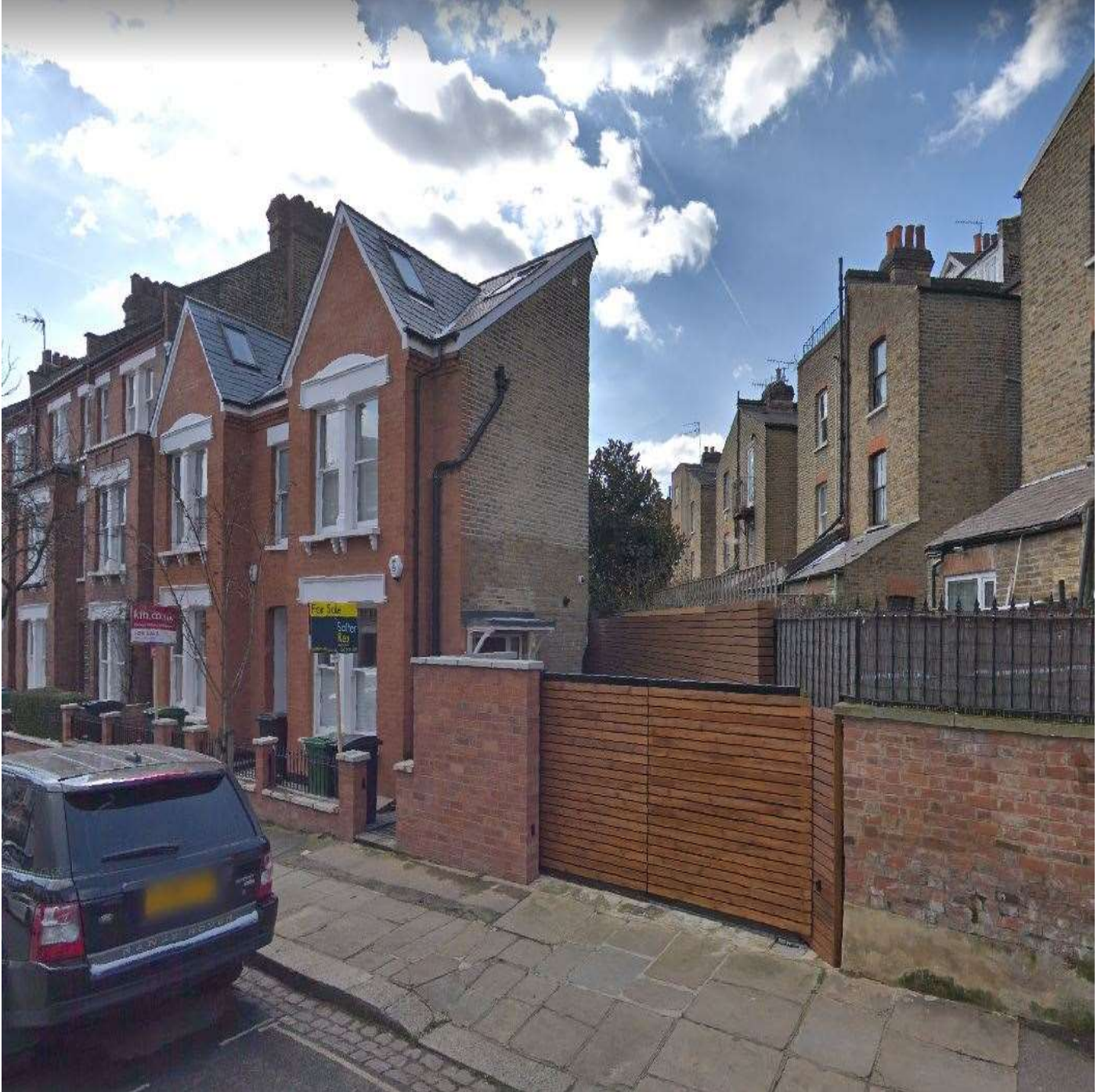
Ella Mews



Pedestrian and vehicular gates, with electric reinforced arms for the vehicular gate and security keypad. Note the CCTV camera to the right of the gate, and floodlighting on the buildings on both sides.



17 Cressy Road



Wooden gate that visually obscures the other side. It is visually not in keeping with the surrounding area, which features metal railings (seen to the immediate right of the gate)



Eldon House



Vehicular and pedestrian gates. Metal with sharply pointed finials and covered over with sheet metal (coverings also on the wall to the right). These obscure the view into the property, and contribute to an unwelcoming appearance.



Mews off Garnet Road



Vehicular and pedestrian gates. Wooden panels block views into the Mews, contributing to an unwelcoming appearance.



Rosslyn Park Mews



Simple metal fence with flat top rail and no finials.



Dunboyne Road



A substantial security gate that restricts both pedestrian and vehicular access and includes fencing. The gates are tall, with security keypads for both pedestrian and vehicular access. There are also several warning signs on the vehicular access gate. As the green signage for the estate shows, this is managed by the Council. As with the currently proposed scheme, the vehicular gate is set back to reduce impact on the highway from any queuing traffic.