

NOTES

1. THIS DRAWING IS TO BE READ IN CONJUNCTION WITH ALL OTHER DRAWINGS, SPECIFICATIONS AND SCOPE OF WORKS.
2. THIS DRAWING IS TO BE READ FOR SERVICES INFORMATION ONLY.
3. ALL SIZES ARE IN MM.
4. DO NOT SCALE FROM THIS DRAWING. ALL DIMENSIONS TO BE VERIFIED FROM SITE MEASUREMENT PRIOR TO COMMENCING WORKS.
5. REFER TO LEGEND DRAWING No. P5-DES-001-R6-DR-E-0001.
6. ALL DETAILS TO BE CONFIRMED.
7. FINAL LOCATIONS AND QUANTITY OF ILLUMINATED EMERGENCY EXIT SIGNS TO BE AGREED WITH BCO.
8. REFER TO SEPARATE TECHNICAL SUBMISSION FOR LIGHTING CONTROL PHILOSOPHY.
9. REFER TO ARCHITECT'S C-SHEETS FOR POSITIONS OF LIGHT SWITCHES AND ILLUMINATED ROOM SIGNS IN CORRIDORS.
10. DUEL SUPPLIES TO CLINICAL SPACES OMITTED AS PER AGREED VE.

LEGEND

REFERENCE DRAWINGS

PO4	ARCHITECTURAL LAYOUT UPDATED.	JAN 2019	M.A.
PO3	PRELIMINARY ISSUE	NOV 2018	M.A.
PO2	REVISED TO MAKE COMMENTS.	APR 2018	M.A.
PO1	PRELIMINARY ISSUE	DEC 2017	M.A.
REV	DESCRIPTION	DATE	BY

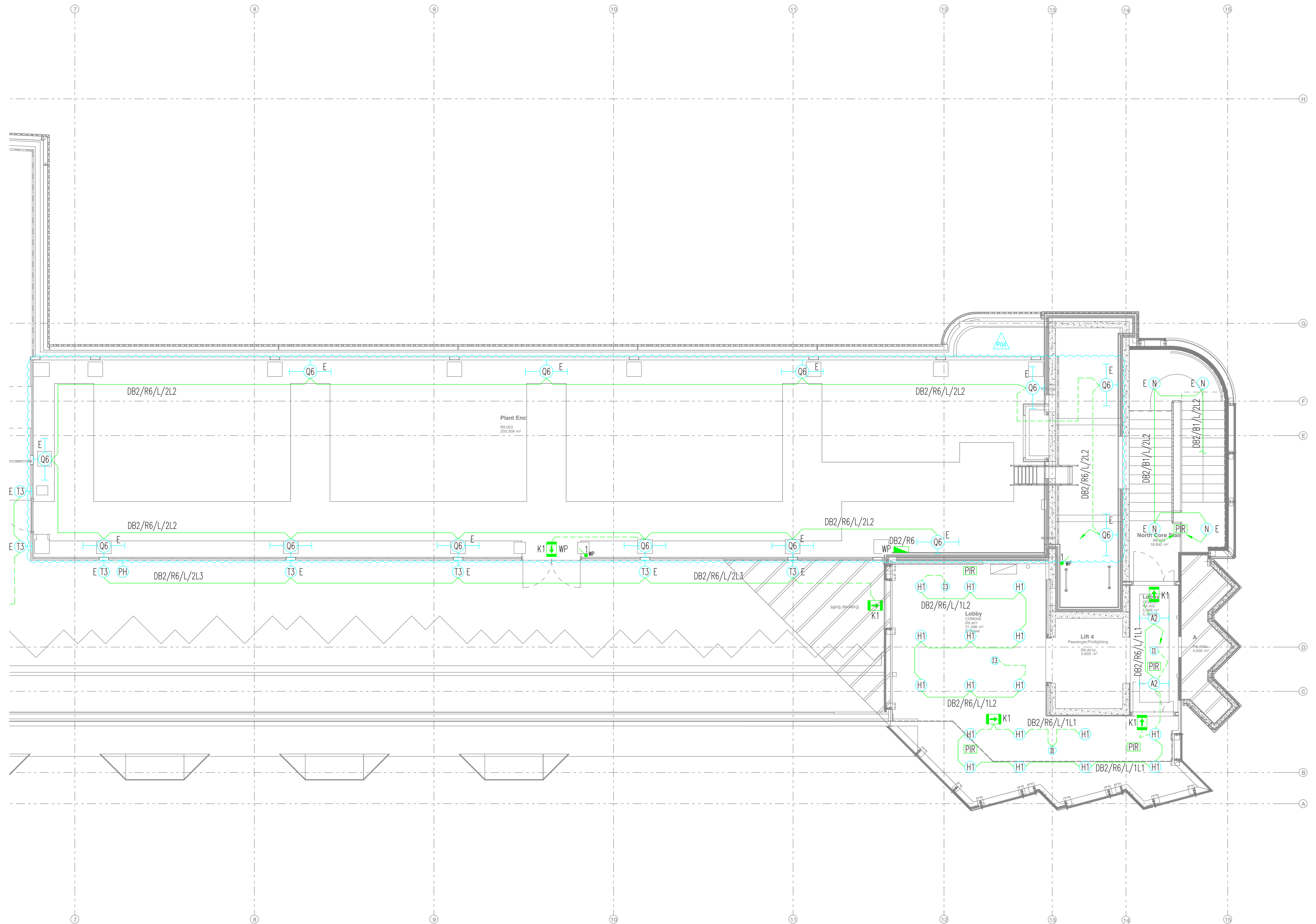


CLIENT
UCLH - PHASE 5

TITLE
ELECTRICAL SERVICES
SIXTH FLOOR - ROOF - NORTH
LIGHTING LAYOUT

DISCIPLINE	ELECTRICAL		
STATUS	APPROVAL		
DRAWN BY	CHECKED BY	SIZE	A0
M.A.	A.D.		
JOB No.	SCALE	DATE	DEC 2017
P5	1:50		
DRAWING No.	REV.		
P5-DES-001-R6-DR-E-1004	P04		

FOR CONTINUATION REFER TO DRAWING No. P5-DES-001-R6-DR-E-1003



SAFETY, HEALTH AND ENVIRONMENTAL INFORMATION
READERS OF THIS DRAWING:
 ALL EFFORTS HAVE BEEN TAKEN BY DORNAN TO DESIGN OUT SIGNIFICANT HAZARDS WITHIN THE DESIGN RISK ASSESSMENT PROCESS. IT IS OUR OPINION THAT THE HAZARDS DETAILAS BELOW CANNOT BE DESIGNED OUT BY US GIVEN THE CONSTRAINTS OF THE BRIEF AND ARE HIGHLIGHTED SO THAT OTHER MEANS CAN BE DEVELOPED TO MITIGATE THE RESIDUAL RISK IDENTIFIED.
NO SIGNIFICANT HAZARDS ASSOCIATED WITH THIS DRAWING

IT IS ASSUMED THAT A COMPETENT MACE CONTRACTOR OR USER WILL BE AWARE OF THE STANDARDS FOREGOING AS REFERRED TO WITHIN WORKING WITH THE TYPE OF SERVICES DETAILED WITHIN THIS DRAWING.