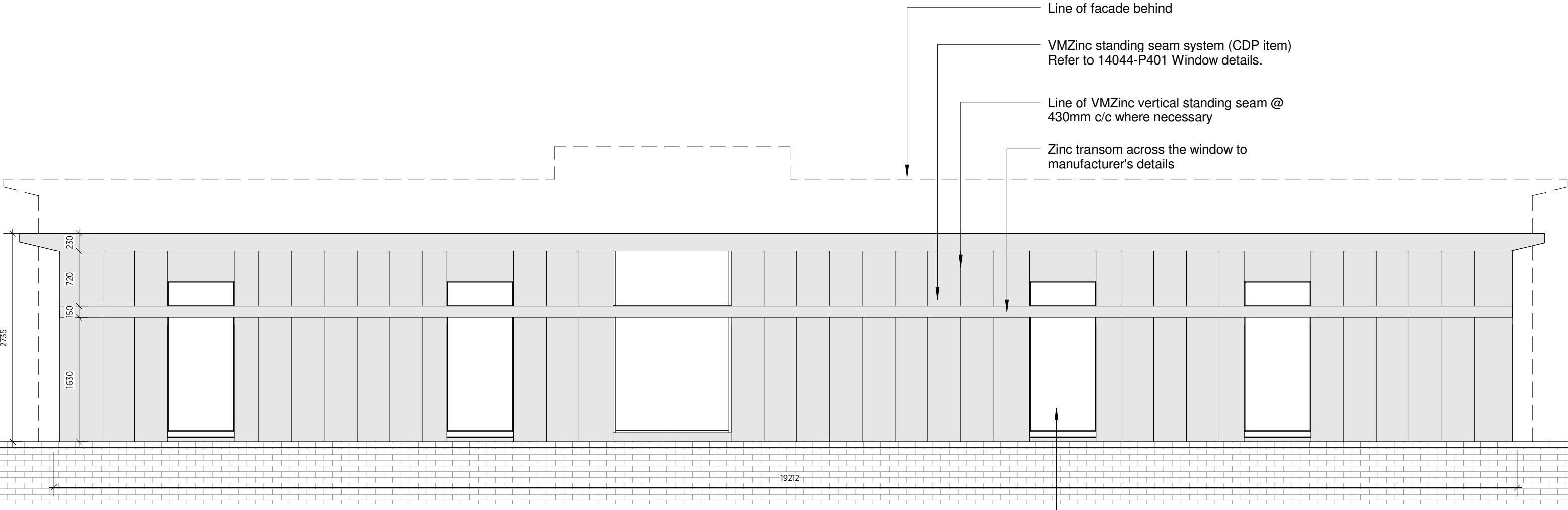


GENERAL NOTES:
 This drawing is copyright of KSR architects. This drawing must be read in conjunction with the Designer's Risk Assessment, specification and all other relevant documentation and drawings. KSR architects accept no liability for any expense, loss or damage of whatever nature and however arising from any variation made to this drawing or in the execution of the work to which it relates which has not been referred to them and their approval obtained.
 Areas are based on unchecked survey and are approximate only.
 Do not scale from this drawing or the digital data, only figured dimensions are to be used. Refer to linear scale for guidance. Check all dimensions on site prior to carrying out any works and advise any discrepancy

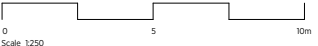


1

PROPOSED FRONT ELEVATION

1 : 50

Vitrocsa TH+ Invisible system monorail fixed window to manufacturer's details



KSRARCHITECTS
 KSR Architects LLP mail@ksrarchitects.com
 14 Grenville Street t: +44 (0)20 7892 5000
 London NW1 0ND www.ksrarchitects.com

41 FROGNAL
 ELEVATION ZINC CLADDING
 FACADE

Date: 01/22/19	Status:
Scale: 1:50	© KSR Architects
Project Ref: 14044	Drawing No: P316