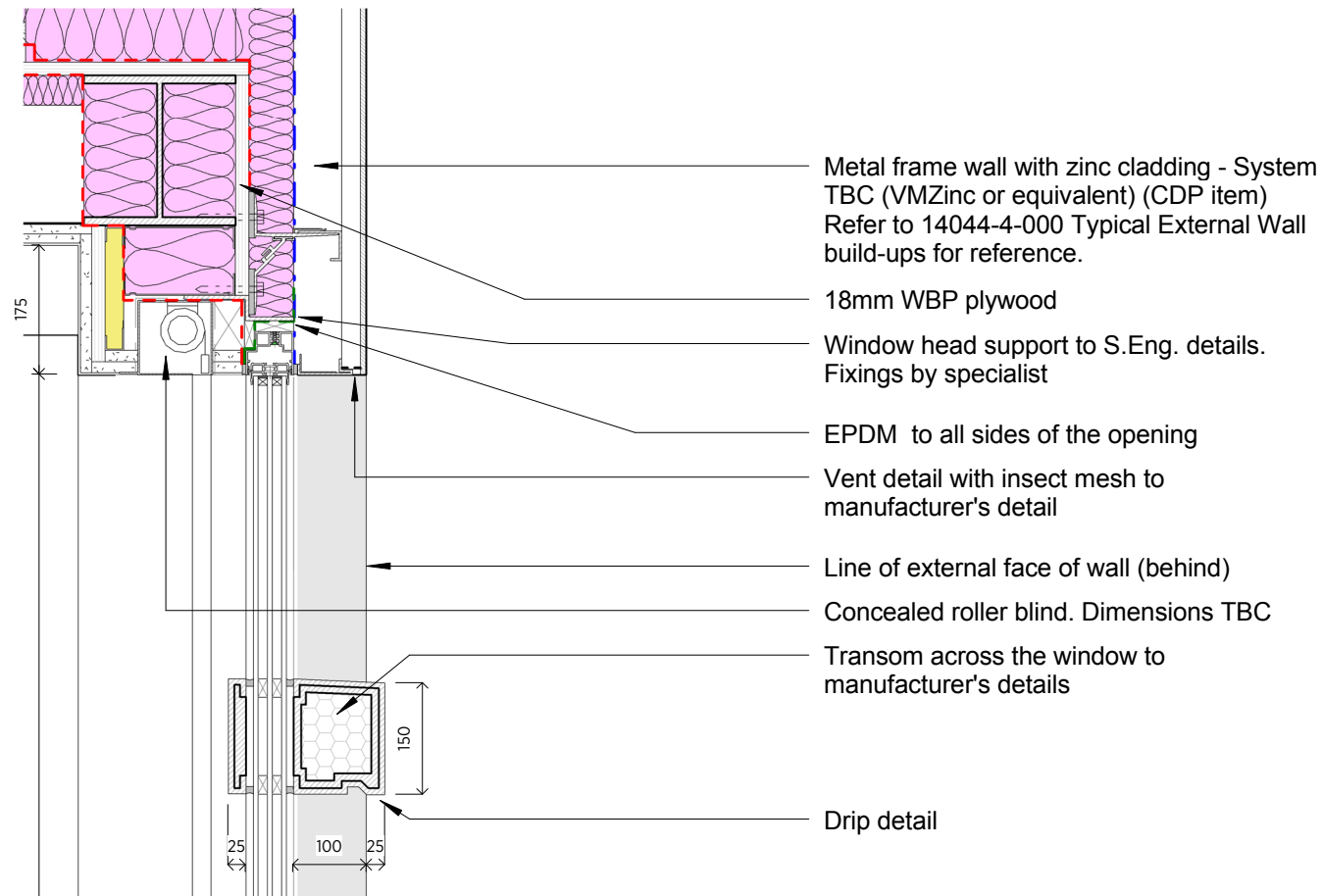


GENERAL NOTES:  
 This drawing is copyright of KSR architects. This drawing must be read in conjunction with the Designer's Risk Assessment, specification and all other relevant documentation and drawings. KSR architects accept no liability for any expense, loss or damage of whatsoever nature and however arising from any variation made to this drawing or in the execution of the work to which it relates which has not been referred to them and their approval obtained.  
 Areas are based on unchecked survey and are approximate only.  
 Do not scale from this drawing or the digital data, only figured dimensions are to be used. Refer to linear scale for guidance. Check all dimensions on site prior to carrying out any works and advise any discrepancy



Metal frame wall with zinc cladding - System TBC (VMZinc or equivalent) (CDP item) Refer to 14044-4-000 Typical External Wall build-ups for reference.

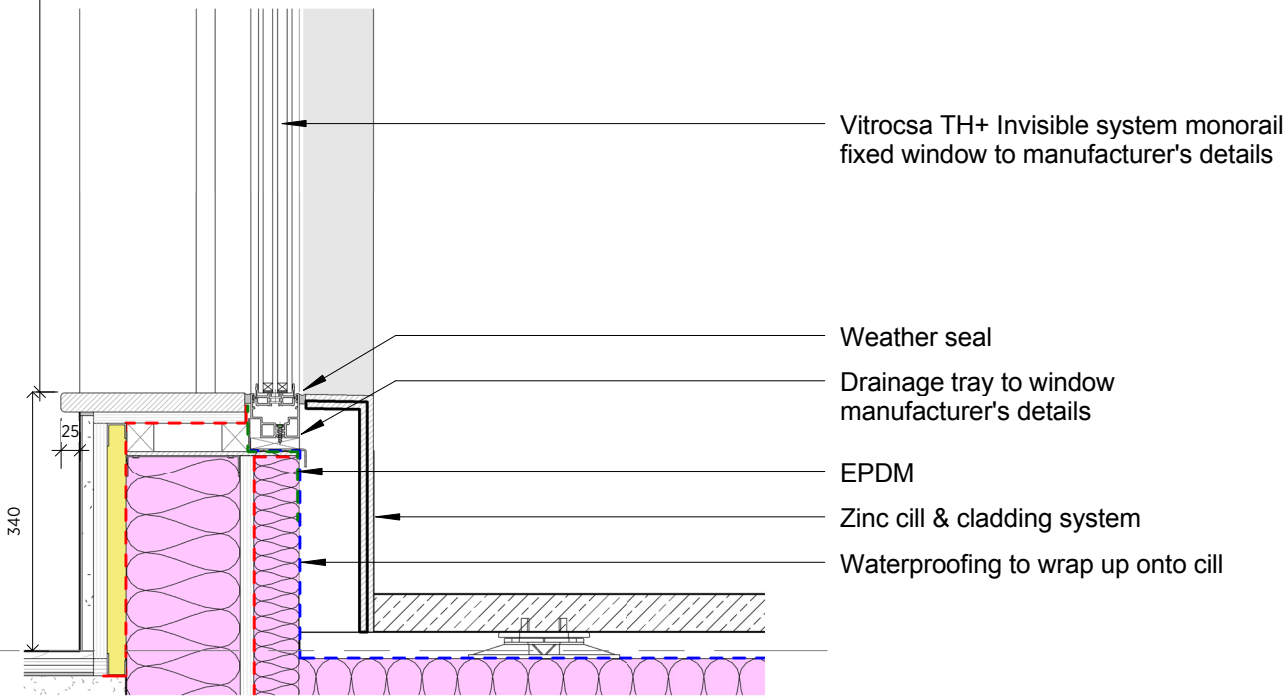
18mm WBP plywood  
 Window head support to S.Eng. details. Fixings by specialist

EPDM to all sides of the opening  
 Vent detail with insect mesh to manufacturer's detail

Line of external face of wall (behind)  
 Concealed roller blind. Dimensions TBC

Transom across the window to manufacturer's details

Drip detail



Vitrocsa TH+ Invisible system monorail fixed window to manufacturer's details

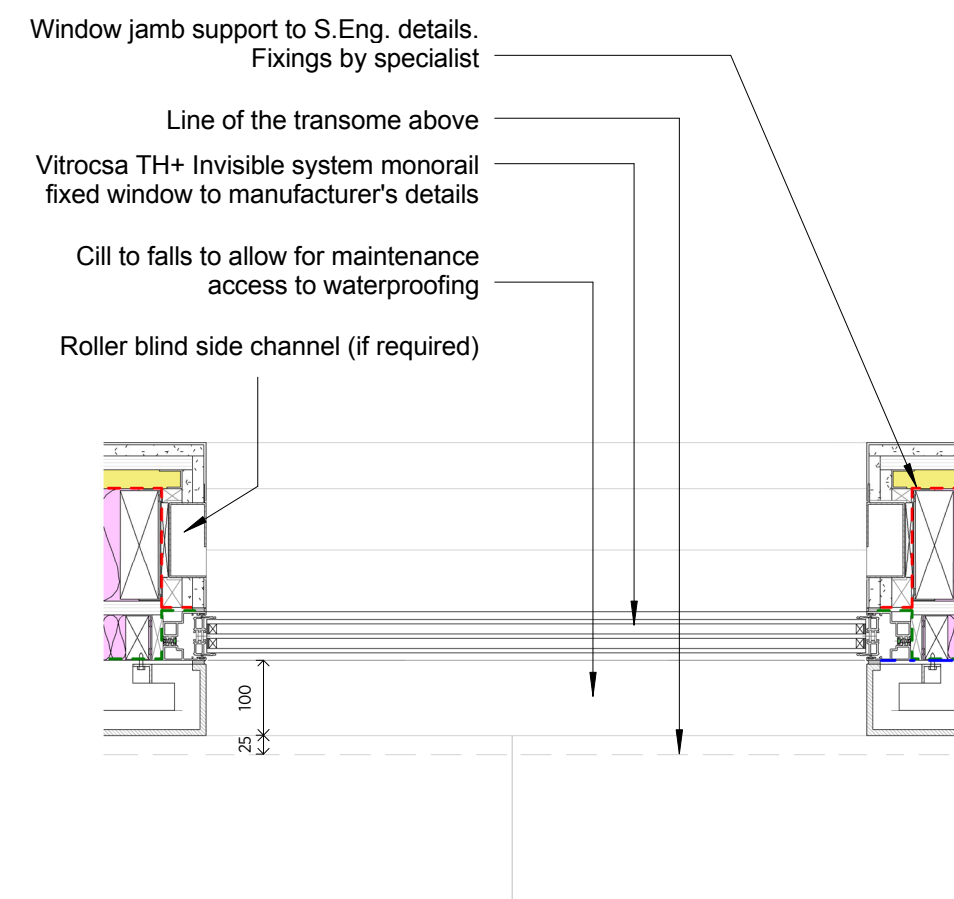
Weather seal

Drainage tray to window manufacturer's details

EPDM

Zinc cill & cladding system

Waterproofing to wrap up onto cill



Window jamb support to S.Eng. details. Fixings by specialist

Line of the transome above  
 Vitrocsa TH+ Invisible system monorail fixed window to manufacturer's details

Cill to falls to allow for maintenance access to waterproofing

Roller blind side channel (if required)

**3** JAMB DETAIL  
 1:10 @ A3

**1** WINDOW - METAL CLADDING HEAD AND CILL DETAIL  
 1:10 @ A3