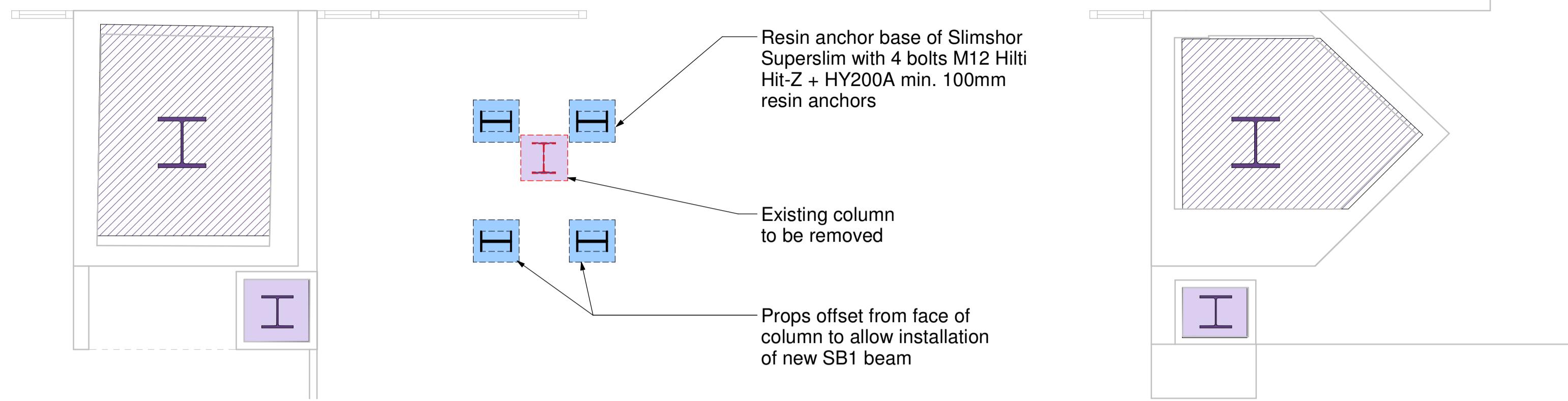


Column to be removed. Similar details as the one shown on this sheet.

Basement - Key Plan

CONCRETE PADSTONE SCHEDULE (PS)	
REF	SIZE (L x W x H)
PS1	330(L) x 215(W) x 290(H)

STEEL BEAM SCHEDULE (SB)		
REF	SIZE	GRADE
SB1	UB406x178x60	S275
SB2	UB203x133x25	S275 Existing



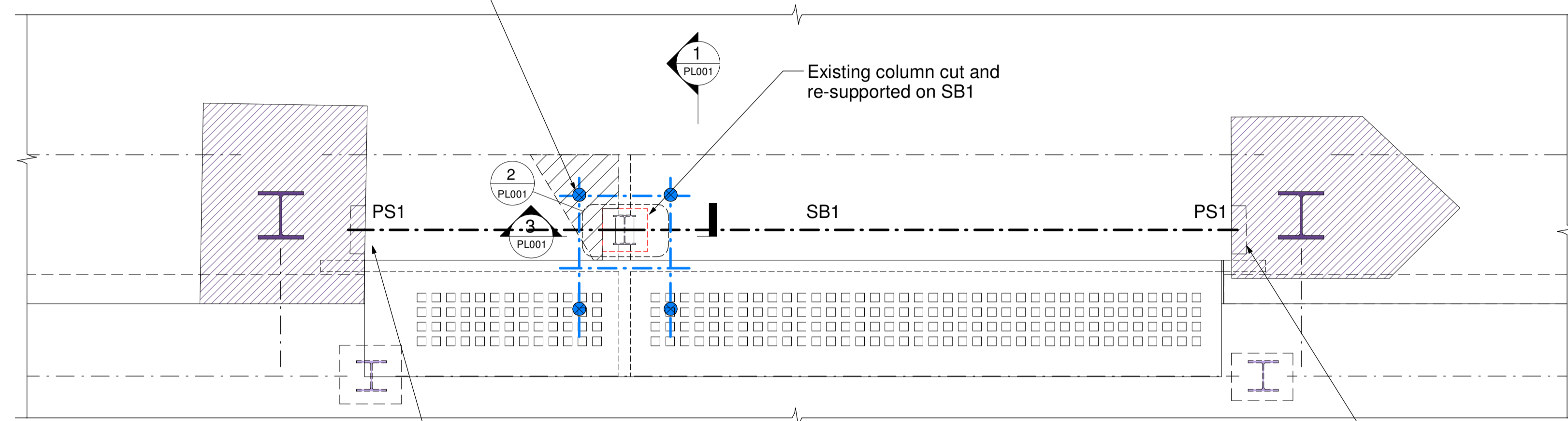
BASEMENT FLOOR PLAN
Scale 1 : 25

4No. Slimshor superslim props with adjustable base and racking heads. Secure tops of props to 152UC header beams with 4 M12 bolts grade 8.8

Resin anchor base of Slimshor Superslim with 4 bolts M12 Hit-Z + HY200A min. 100mm resin anchors

Existing column to be removed

Props offset from face of column to allow installation of new SB1 beam

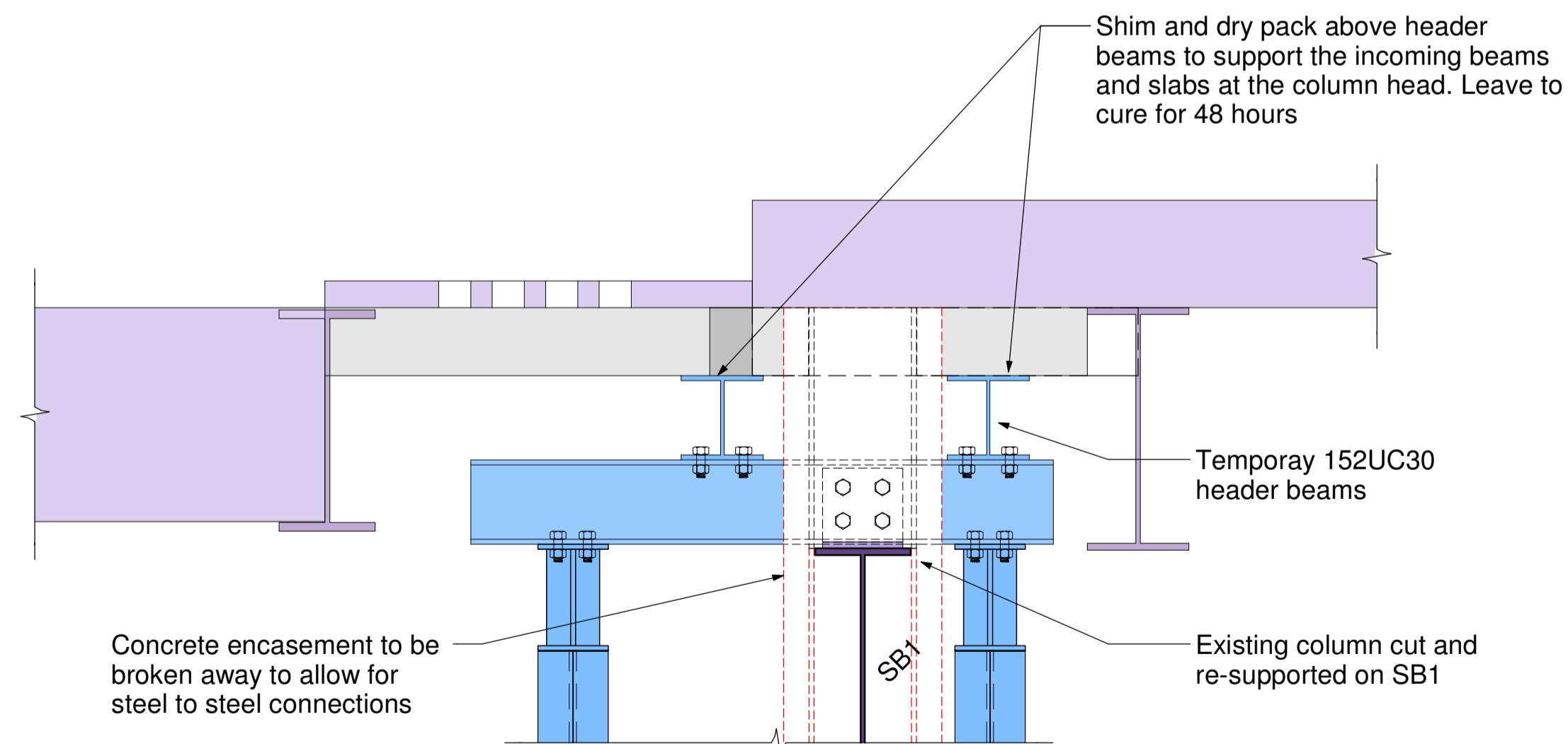


GROUND FLOOR PLAN
Scale 1 : 25

Ends on new SB1 supported on new padstone into existing masonry

Ends on new SB1 supported on new padstone into existing masonry

- The beams spanning in to the columns will be supported temporary with header beams and props supported on the deep raft slab in the basement.
- Shim and dry pack above header beams to support the incoming beams and slabs at the column head. Leave to cure for 48 hours
- The column will then be cut off below the beams and a new transfer beam installed which will in turn span between the masonry piers around the primary columns. Concrete padstones will be installed in the masonry piers to avoid locally overstressing the masonry.
- Any gap between the new beam and underside of the existing column is to be shimmed then angle brackets are to be bolted to the beam and column to secure it.
- The temporary propping may then be removed.



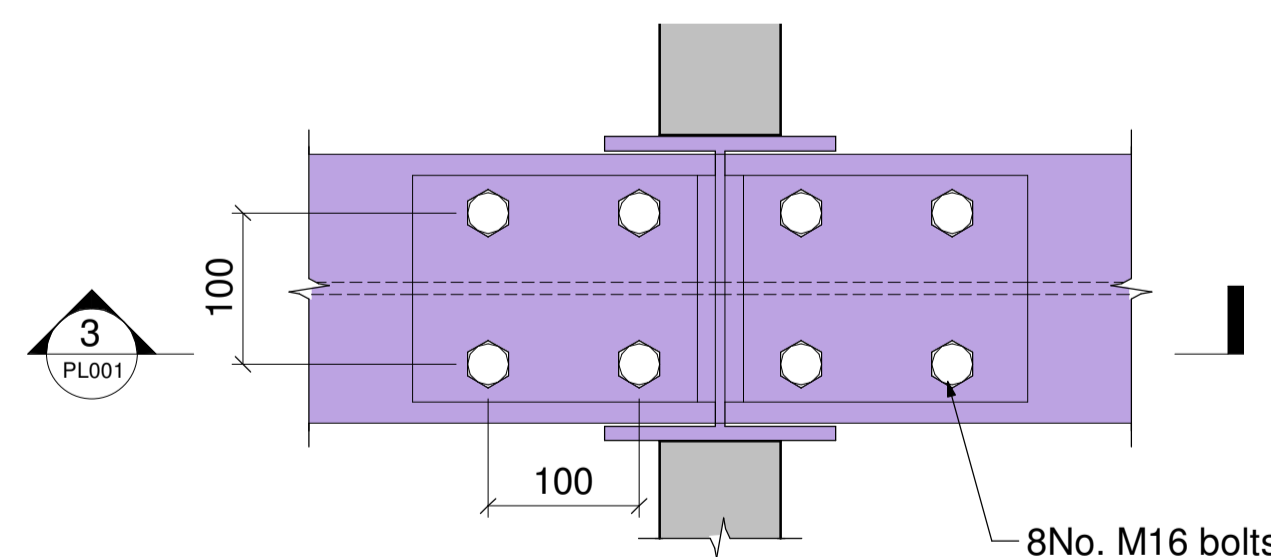
SECTION 1 - 1
Scale 1 : 10

Shim and dry pack above header beams to support the incoming beams and slabs at the column head. Leave to cure for 48 hours

Temporay 152UC30 header beams

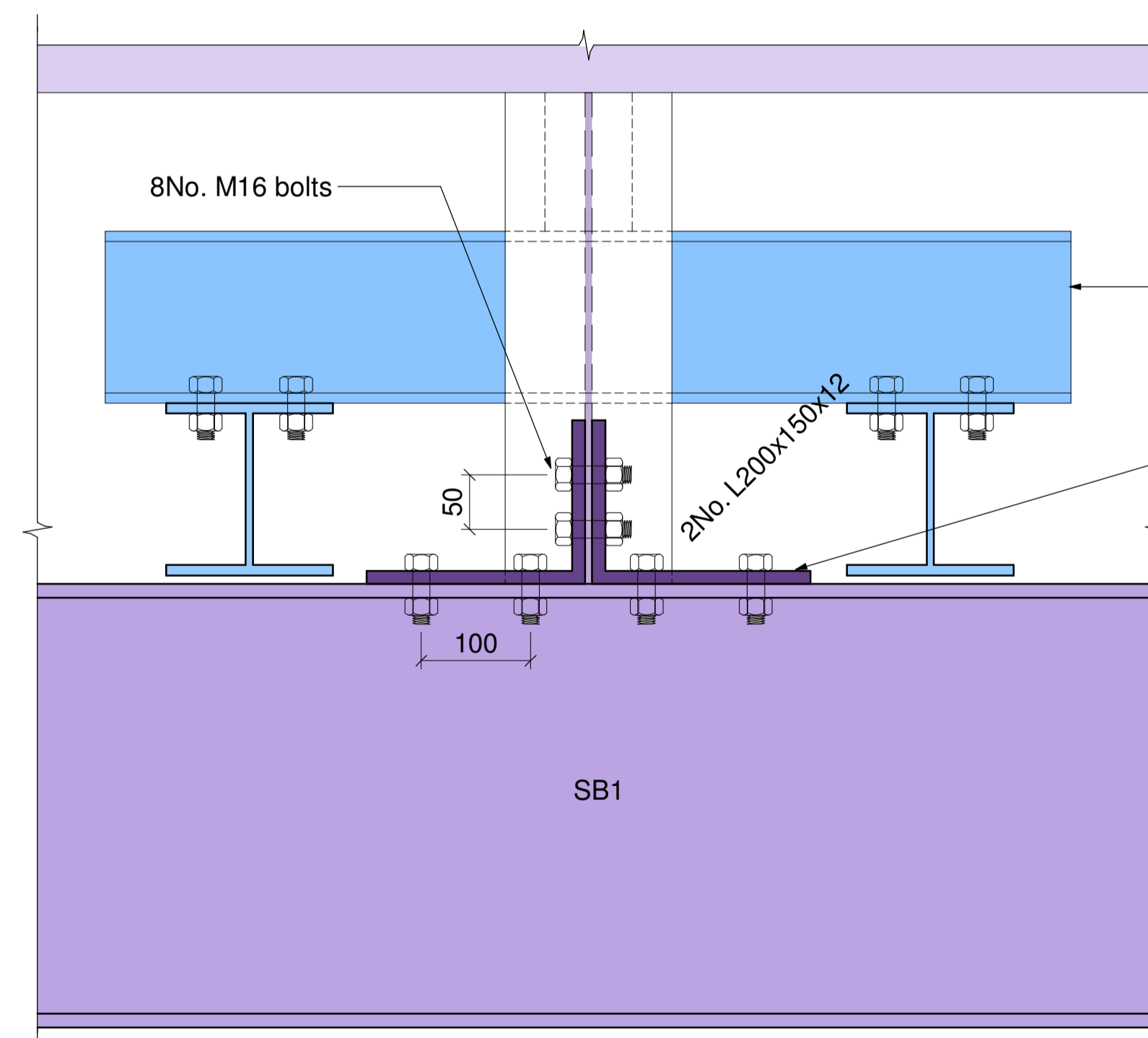
Existing column cut and re-supported on SB1

Concrete encasement to be broken away to allow for steel to steel connections



DETAIL 2
Scale 1 : 5

8No. M16 bolts



SECTION 3 - 3
Scale 1 : 5

8No. M16 bolts

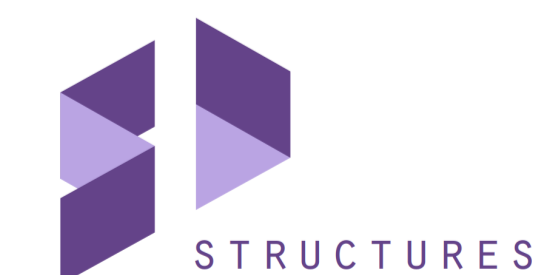
Temporay 152UC30 header beams

Connect column to SB1 with 200x100 UEA with M16 bolts

SB1

- Notes:
1. These drawings are not to be used for setting out purposes. Refer to the latest Architects information and site measure as required.
 2. Contact SD Structures in the event of any discrepancies between findings on site and these drawings.
 3. Drawing is to be read in conjunction with the SD Structures Engineer's Specification and General Notes.
 4. 3D views are indicative only and any conflicting 2D information should take precedence. If in doubt contact SD Structures prior to starting work

C0	Construction Issue	13/02/2019	EP	MD	Scale: As indicated @A1	SDS590 - PL001	Rev: C0
Rev	Amendment	Date	Drawn	Eng			



CONSTRUCTION

Arena 8 - 65 Kingsway
SDS590
Basement and Ground Floor Plan
Pavement Column Removal Details

Eng: MD
Drawn: EP