



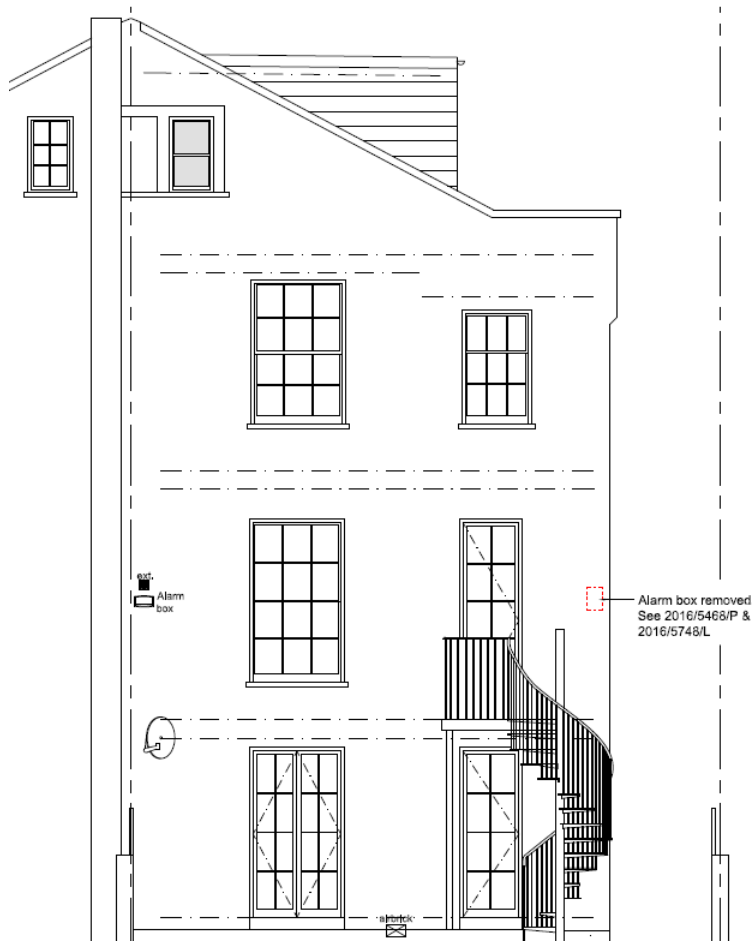
**1 Provost Road NW3 4ST**  
**Design & Access Statement**  
April 2019



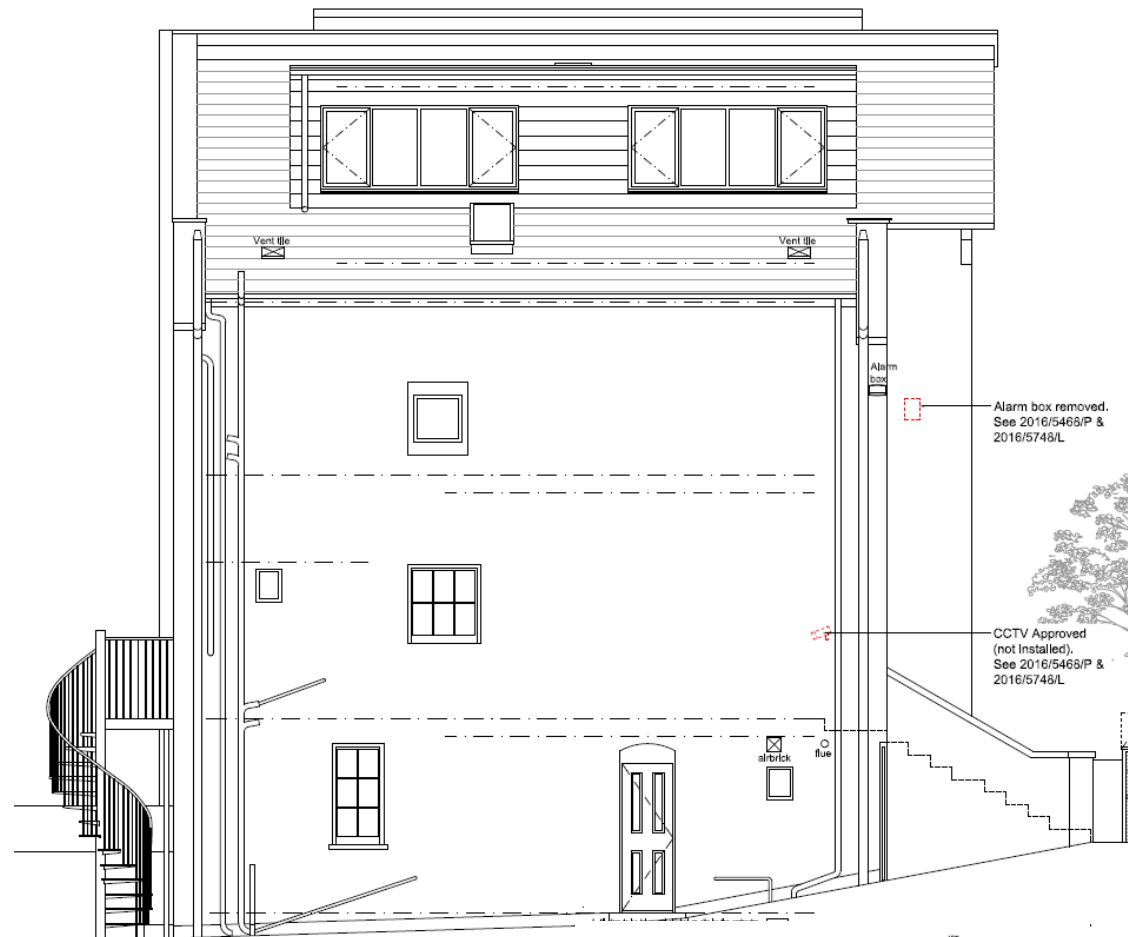
Designed by John Shaw, this property dates back to circa 1844 and is positioned within one of seven pairs of semi-detached villas on Provost Road. Located in the London Borough of Camden these early Victorian villas are Grade II Listed Buildings and form part of the Eton Conservation Area.

1 Provost Road is a single family dwelling formed over four floors, lower ground, ground, first and second with a rear garden accessed from the lower ground floor and via the ramped narrow passageway to the flank (side) of the property.

Planning Permission and Listed Building Consent were granted for the refurbishment of the house in November 2016 and the works were completed in May 2017, please see **2016/5468/P** and **2016/5748/L**



**Rear elevation**



**Flank (side) elevation**

During the refurbishment in 2017, alarm boxes located on the return wall to the front elevation and the outside corner of the rear elevation were removed and relocated to less prominent locations on the flank (side) elevation and the rear elevation. This **Listed Building Application** is for the re-siting of the alarm boxes as indicated above and noted on drawings submitted with the application. The location of the CCTV on the flank elevation was approved in the above-mentioned applications (see page 2) however it was decided not to proceed with the installation.



Unfortunately this conservation area is still susceptible to crime, and Provost Road (comprises 21 homes) has experienced 7 burglaries since 2016. A recent spate of crime has necessitated the residents to consult with their local MP, local councillors and Community Safety Officers to request more support and whilst the home owners understand it is their responsibility to secure their properties, one has to balance the sensitivity of the Grade II Listing of these homes and the requirement to provide an effective deterrent to potential crime – the Eton CAAC recommends alarm boxes are mounted not on the front elevations but in less visible positions on the side elevations as installed at 1 Provost Road.

The Crime and Safety advice on Camden Council's website <https://www.camden.gov.uk/crime-and-safety#tuqt> notes the following;

***'Defending your home***

*Homes with good security are less likely to be burgled. Apart from making sure all windows and doors are locked, **fit a visible alarm** etc.'*