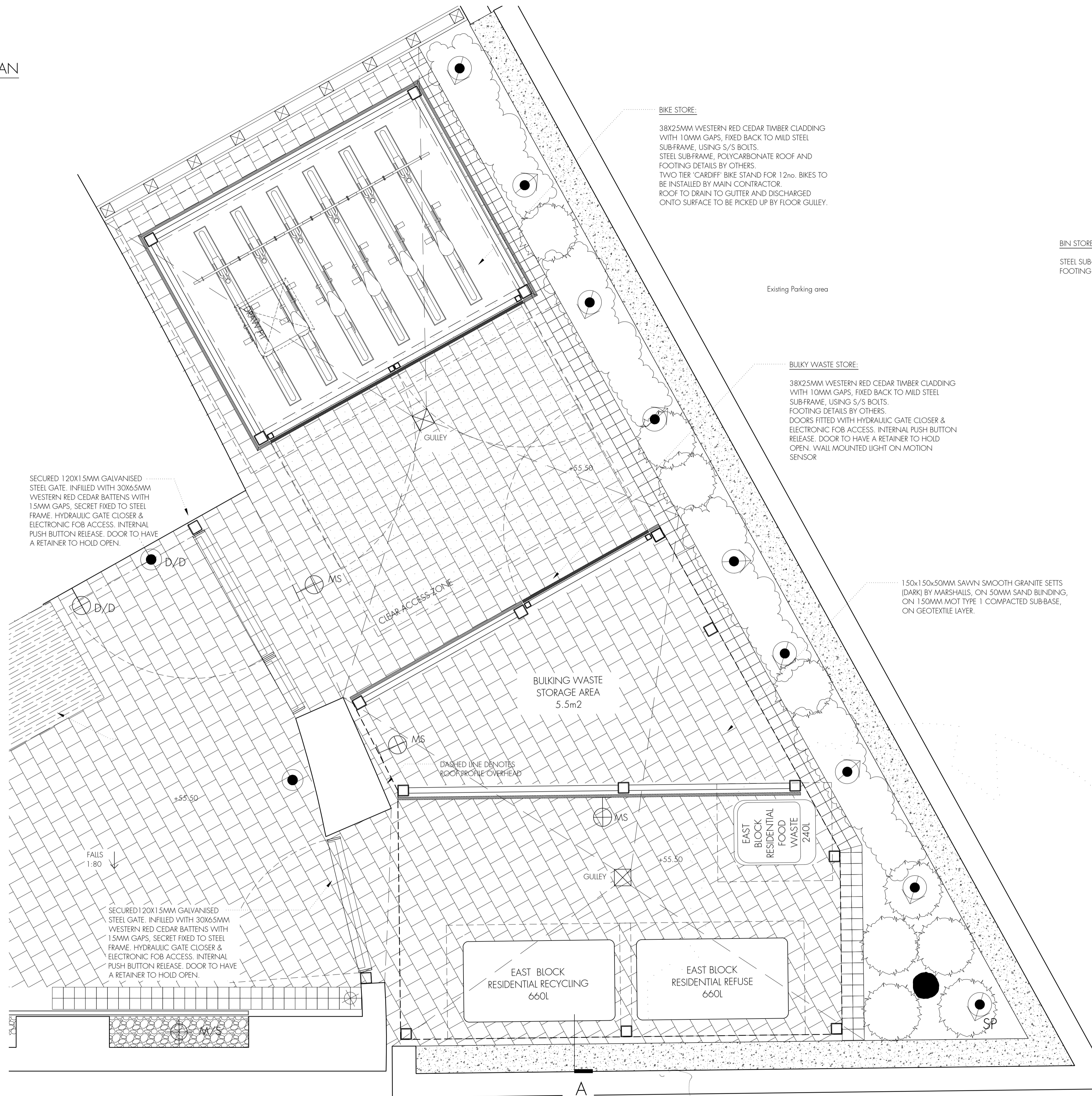


PLAN



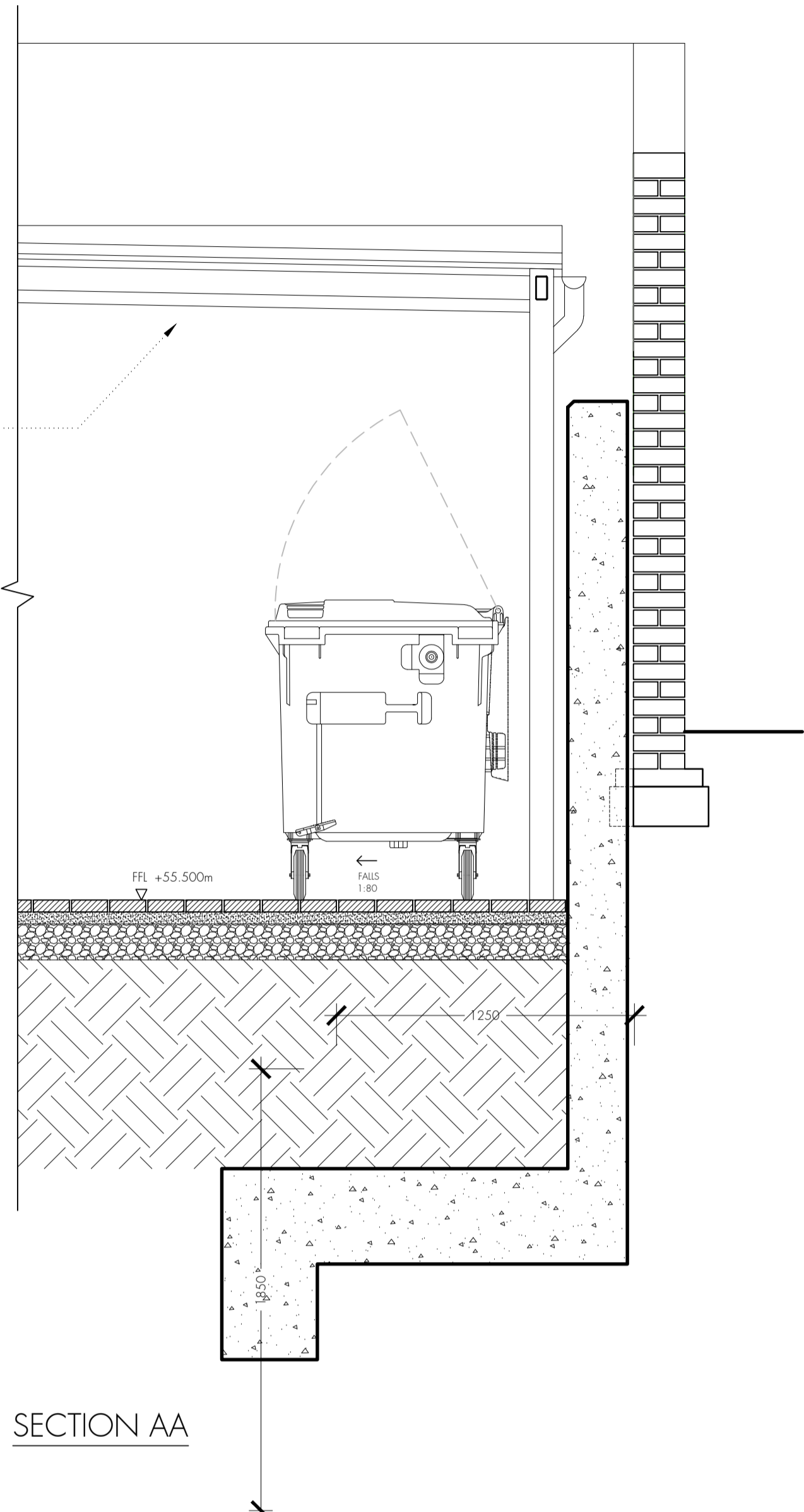
BIKE STORE:
 38x25MM WESTERN RED CEDAR TIMBER CLADDING WITH 10MM GAPS, FIXED BACK TO MILD STEEL SUB-FRAME, USING S/S BOLTS.
 STEEL SUB-FRAME, POLYCARBONATE ROOF AND FOOTING DETAILS BY OTHERS.
 TWO TIER 'CARDIFF' BIKE STAND FOR 12no. BIKES TO BE INSTALLED BY MAIN CONTRACTOR.
 ROOF TO DRAIN TO GUTTER AND DISCHARGED ONTO SURFACE TO BE PICKED UP BY FLOOR GULEY.

Existing Parking area

BULKY WASTE STORE:
 38x25MM WESTERN RED CEDAR TIMBER CLADDING WITH 10MM GAPS, FIXED BACK TO MILD STEEL SUB-FRAME, USING S/S BOLTS.
 FOOTING DETAILS BY OTHERS.
 DOORS FITTED WITH HYDRAULIC GATE CLOSER & ELECTRONIC FOB ACCESS. INTERNAL PUSH BUTTON RELEASE. DOOR TO HAVE A RETAINER TO HOLD OPEN. WALL MOUNTED LIGHT ON MOTION SENSOR

150x150x50MM SAWN SMOOTH GRANITE SETTS (DARK) BY MARSHALLS, ON 50MM SAND BLINDING, ON 150MM MOT TYPE 1 COMPACTED SUB-BASE, ON GEOTEXTILE LAYER.

BIN STORE ROOF COVER:
 STEEL SUB-FRAME, POLYCARBONATE ROOF AND FOOTING DETAILS BY OTHERS.



SECTION AA

tasou
 associates

architects + structural engineers
 4 Amwell Street, London. EC1R 1UG T:020 7713 7070 F:020 7713 7071 E:tasou@tasou.co.uk

project	Swains Lane, London, N6 6QX		
dwg title	East Building Bin & Bicycle Storage		
job no.	1658	dwg no.	EW-114 rev. A
date	October 2018	scale @ A1	1:20