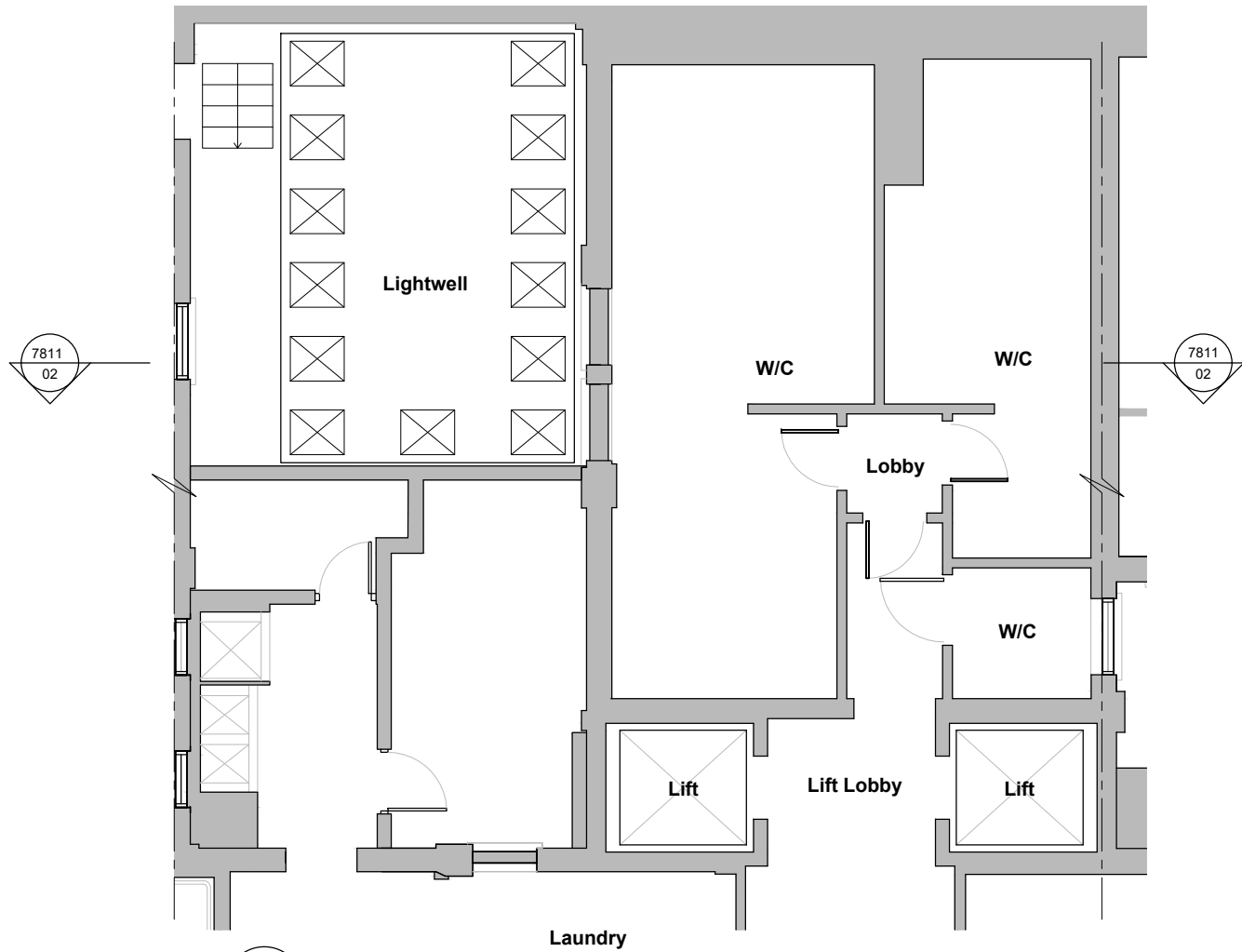
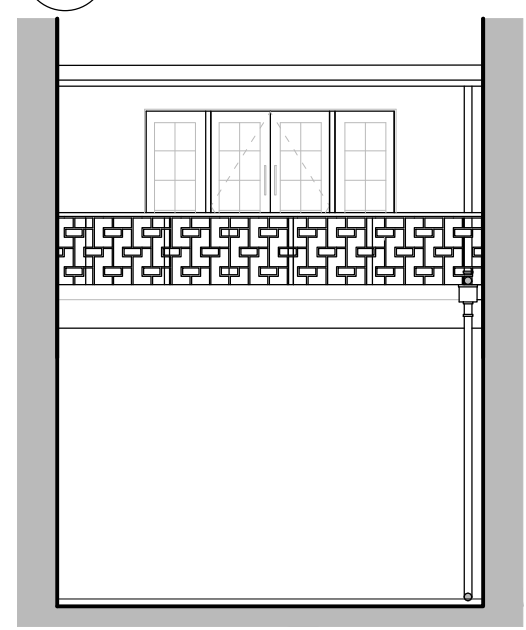


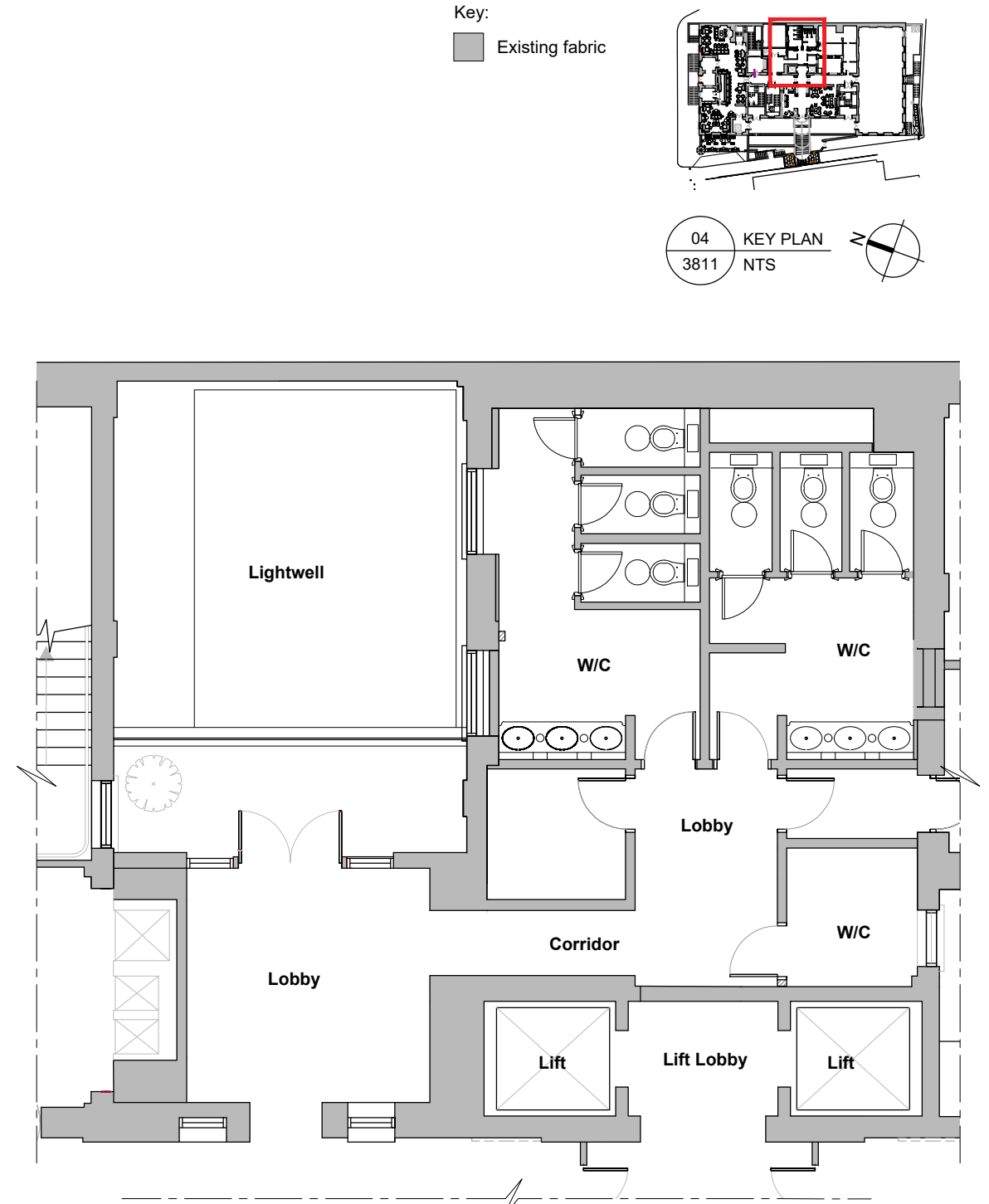
All drawings based on survey by others



01 LIGHTWELL EXTENSION - BASEMENT PLAN AS BUILT
7811 1:100 @ A3

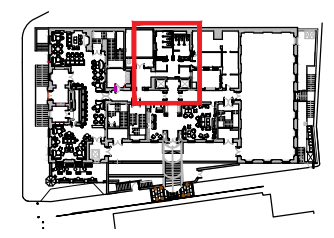


02 LIGHTWELL EXTENSION - SECTION AS BUILT
7811 1:100 @ A3

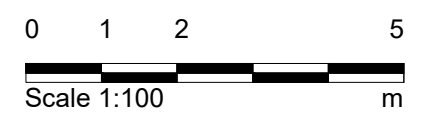


03 LIGHTWELL EXTENSION - GROUND FLOOR PLAN AS BUILT
7811 1:100 @ A3

Key:
Existing fabric



04 KEY PLAN
3811 NTS



Purpose of Issue:
RECORD

Notes:
1 Any dwg format drawing is to be read only in conjunction with and at the scale of the accompanying pdf.
2 Status 'C' drawing (Construction):
All dimensions are to be checked on site by the contractor, scaling is for Planning purposes only.
Unless otherwise indicated, all dimensions are in millimeters.
All information on this drawing is to be read in conjunction with the relevant Donald Insall Associates specification and trade contractors' drawings and information by specialists.
3 In the event of any query, please contact us immediately.
4 This drawing contains survey information by others and is to be used solely for the purposes for which it was issued.

Rev	Date	Dwn	Auth	Revision	Rev	Date	Dwn	Auth	Revision
					3	16.01.19	NXY	AEF	Amended after Inspection
					2	09.01.19	NXY	AEF	Amended after Inspection
					1	11.12.18	NXY	AEF	Amended after Inspection
					-	22.08.16	BXR	AEF	INITIAL ISSUE

Drawing Status
F Feasibility
S Sketch Design
D Design
P Planning
B Building Control
W Working Drawing
M Measurement
T Tender
C Construction
R Record

BLOOMSBURY HOTEL
WC1B 3NN

Basement Lightwell
As Built

Donald Insall Associates
Chartered Architects and Historic Building Consultants
12 Devonshire Street, London W1G 7AB
T: (+44)20 7245 9888 www.insall-architects.co.uk

Project	BLOOM.01	No	7811
Scale		Status	Rev
(A3) 1:	100	R	3