

1. Aerial view with labels

BS17067 – 1, 3 and 5 Agar Grove, Camden



2. Street view of all properties



3. Front elevation – 1 Agar Grove



4. Cracking to stucco to front - 1 Agar Grove



5. Cracking to front corner – 1 Agar Grove

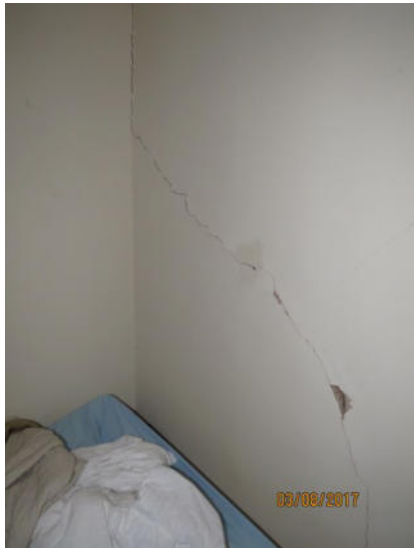




6. Rear elevation – 1 Agar Grove



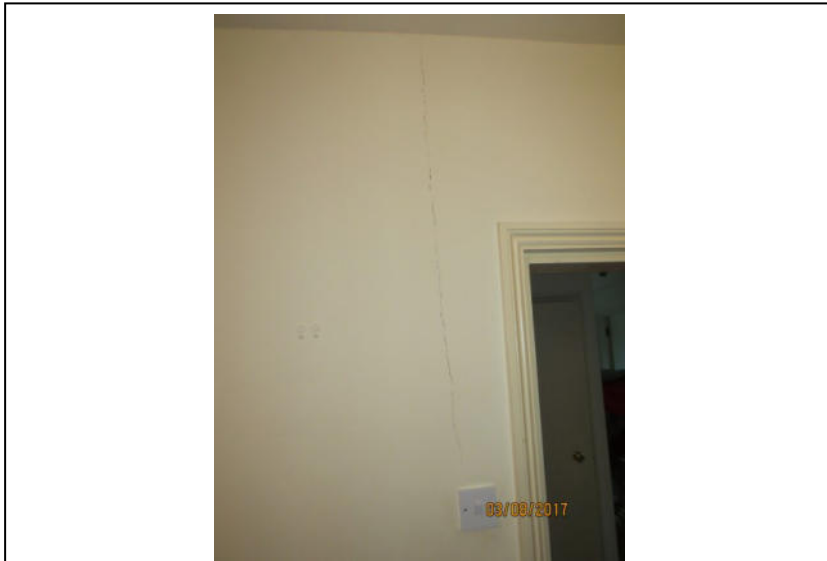
7. Rear elevation – 1 Agar Grove; note high level distortion up to side extension



8. Internal crack to lower ground floor; mirrored by photo 5 – 1 Agar Grove



9. Close-up of crack in photo 8



10. Crack to internal wall to lower ground floor – 1 Agar Grove



11. Close-up of crack in photo 10



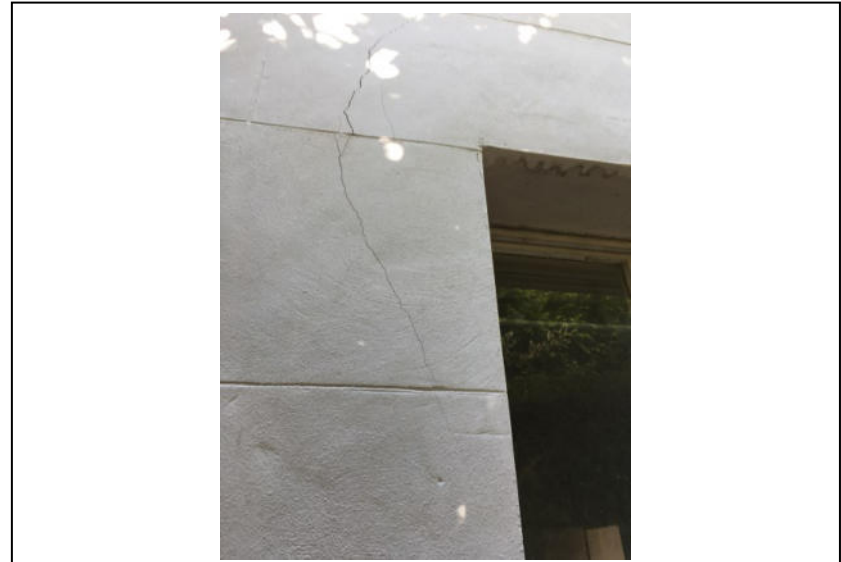
12. Internal crack to upper ground floor front wall – 1 Agar Grove



13. Crack to staircase side extension – 1 Agar Grove



14. Front elevation; note crack over left hand window – 3 Agar Grove



15. Crack to front stucco – 3 Agar Grove



16. Cracking to front corner – 3 Agar Grove



17. Rear elevation – 3 Agar Grove; note high level distortion up to side extension





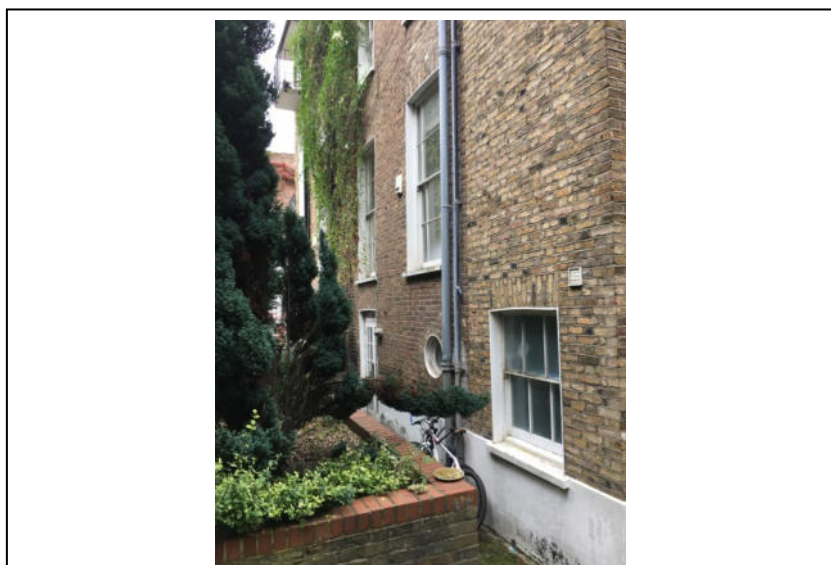
18. Internal crack to second floor front wall – 3 Agar Grove



19. Front elevation – 5 Agar Grove



20. Cracking to front corner – 5 Agar Grove



21. Rear elevation – 5 Agar Grove



22. Internal crack to lower ground floor; mirrored by photo 20 – 5 Agar Grove



23. Internal crack to first floor front wall – 5 Agar Grove



24. Crack to staircase side extension – 5 Agar Grove

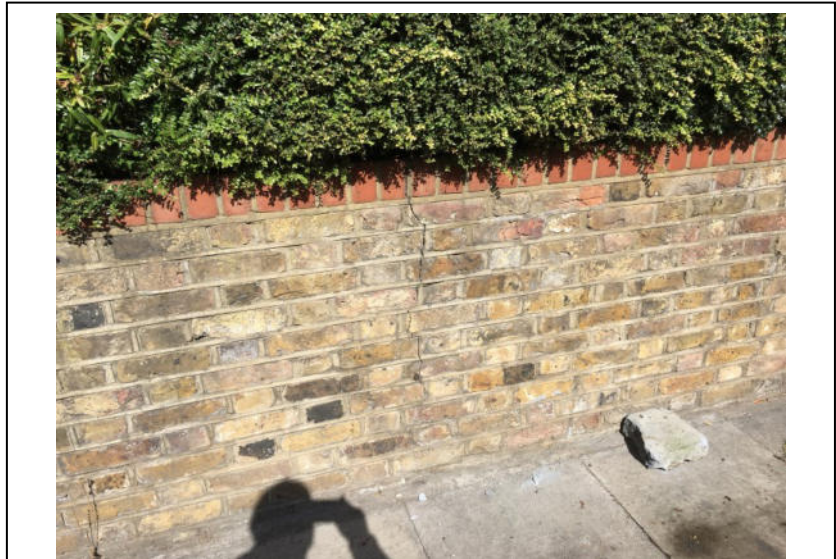


25. Lime tree to Gairloch House land to west of 1 Agar Grove





26. Similar view as photo 25 except street view image from 2008



27. Crack to front boundary wall – 1 Agar Grove

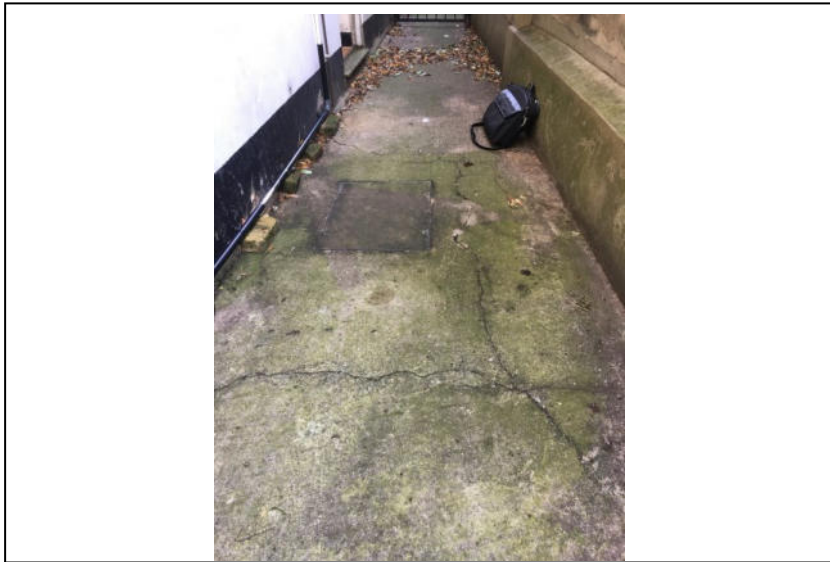


28. Cracking to concrete pathway – 1 Agar Grove



29. Surface water gully – 3 Agar Grove

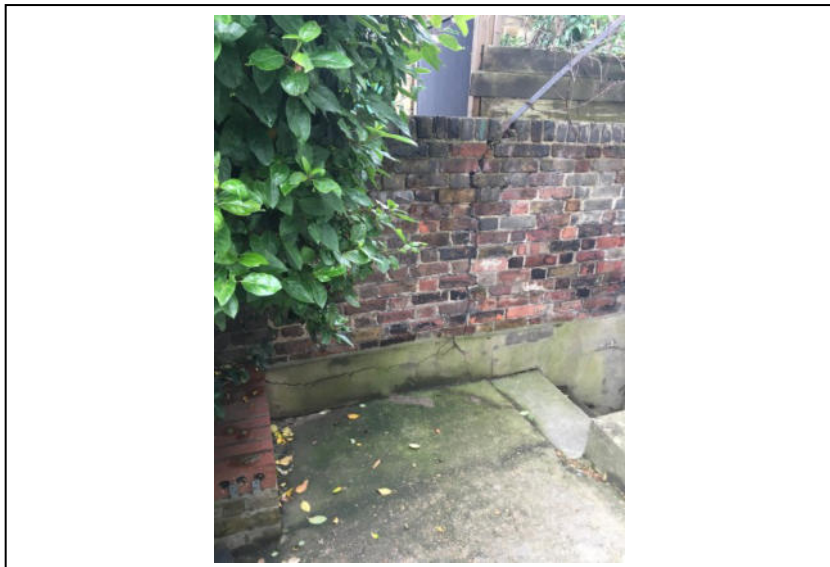




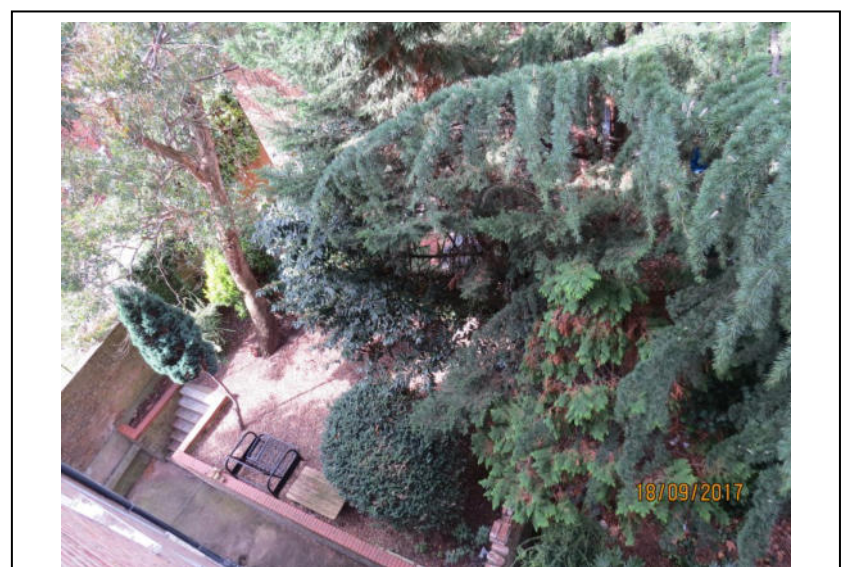
30. Cracking to pathway and manhole cover – 1 Agar Grove



31. Blocked surface water gully – 1 Agar Grove

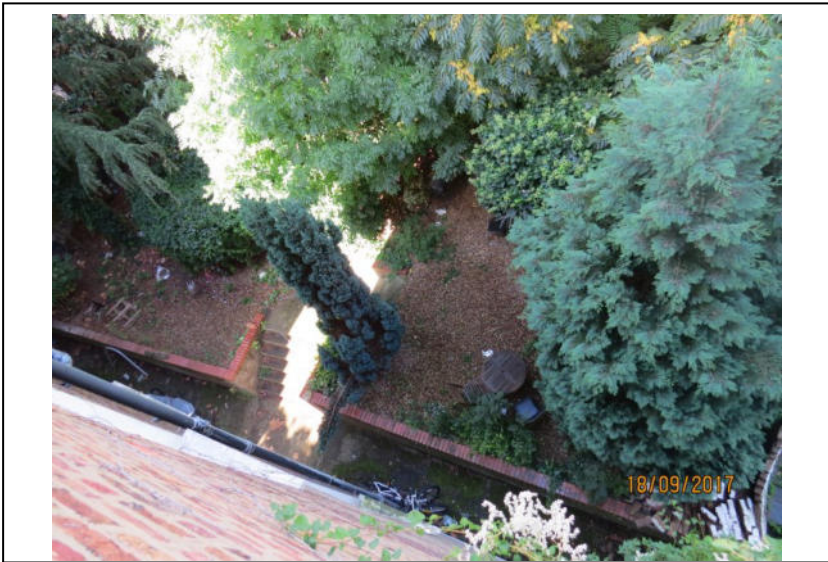


32. Crack to garden wall to west – 1 Agar Grove

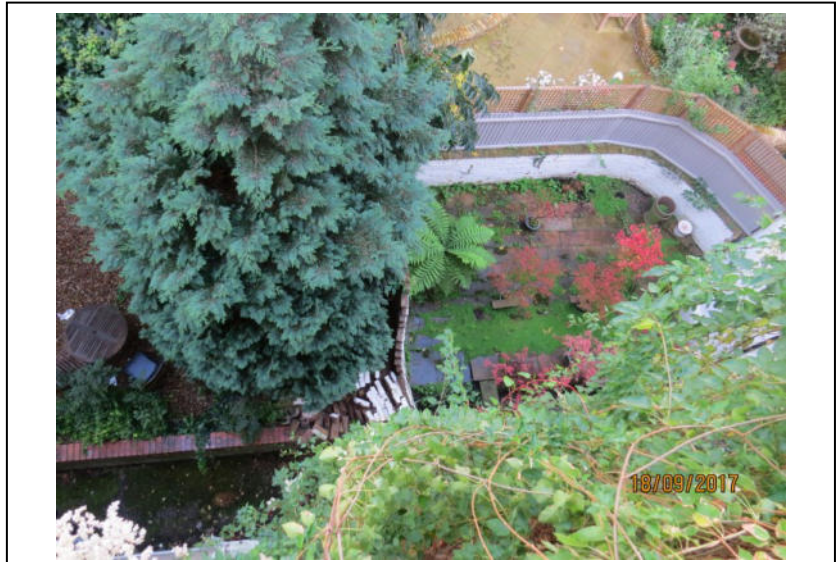


33. View of vegetation to rear of 1 Agar Grove

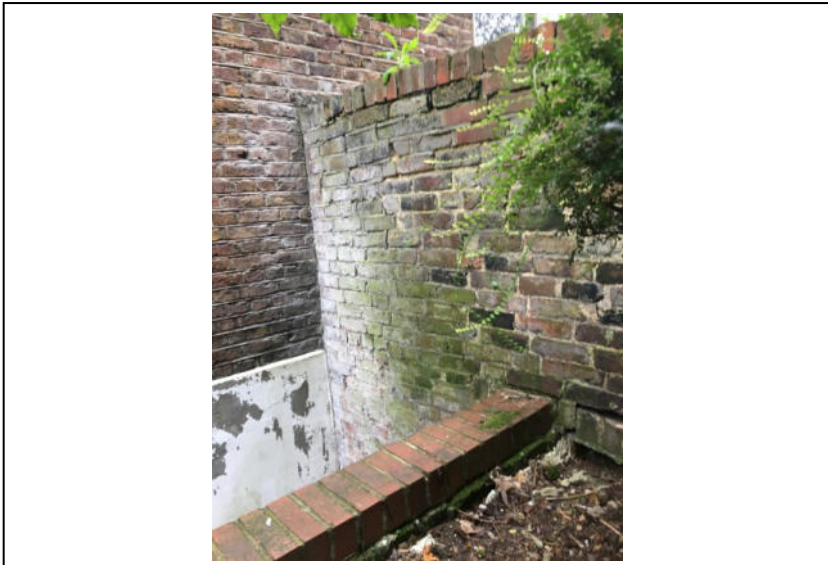




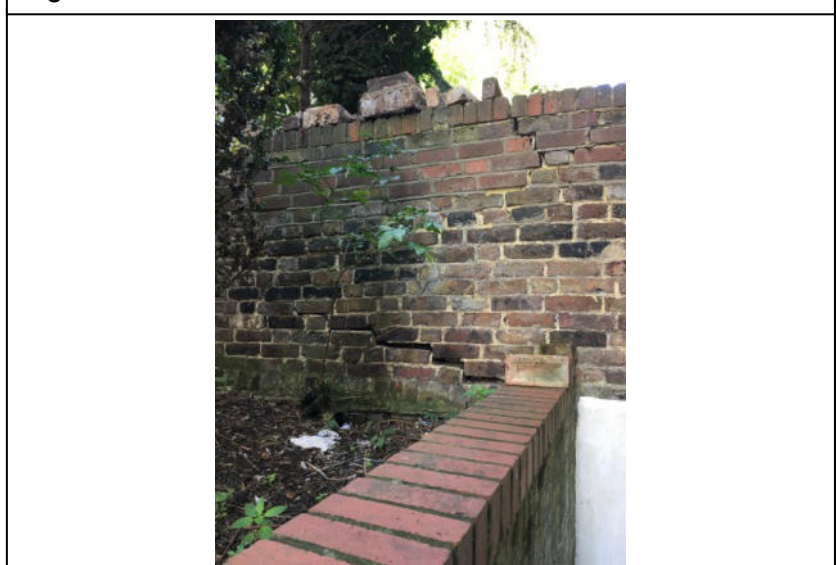
34. View of vegetation to rear of 3 and 5 Agar Grove



35. View of vegetation and collapsed garden wall to rear of 5 Agar Grove



36. Garden wall between rear of 1 and 3 Agar Grove



37. Garden wall between rear of 1 and 3 Agar Grove





38. Collapsed garden wall to 5 Agar Grove with 7 Agar Grove



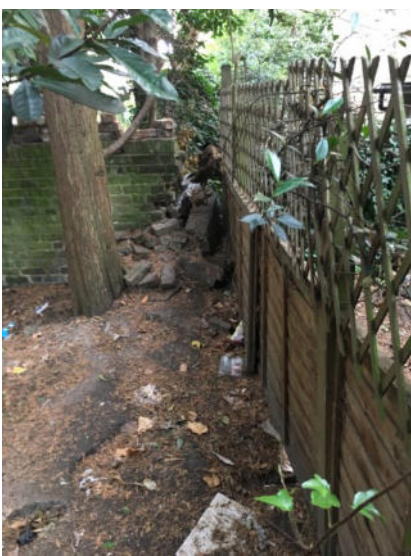
39. Collapsed garden wall to 5 Agar Grove with 7 Agar Grove



40. Cracked and displaced garden wall to rear of 5 Agar Grove



41. Cracked and displaced garden wall to rear of 3 Agar Grove



42. Partially collapsed garden wall to rear of 5 Agar Grove