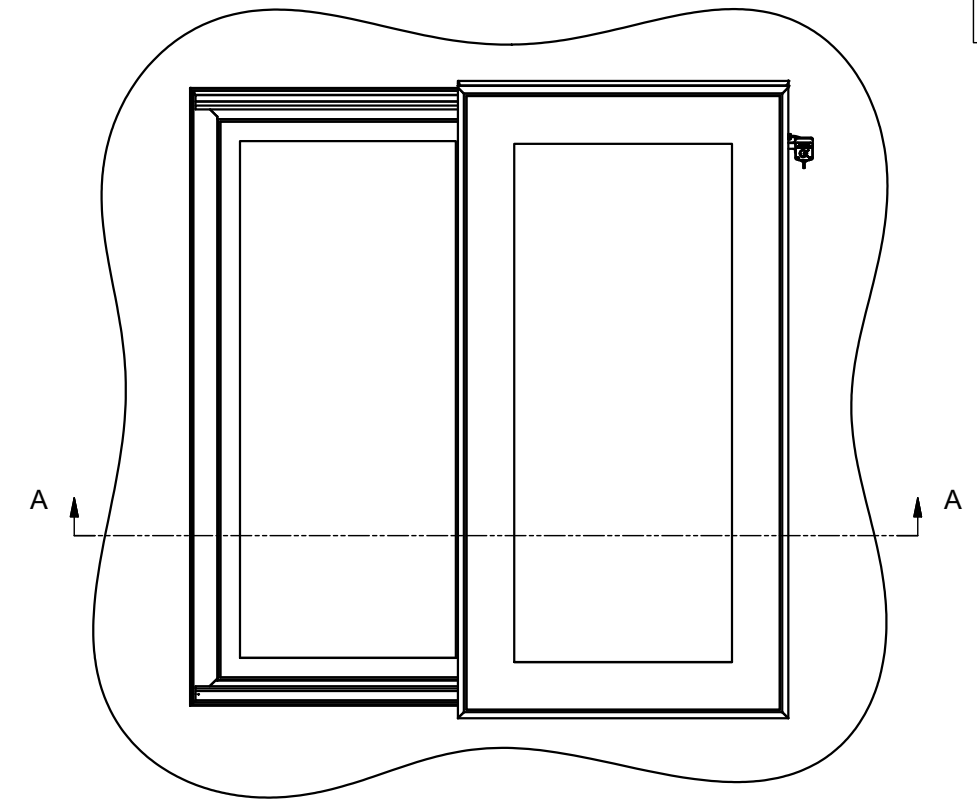
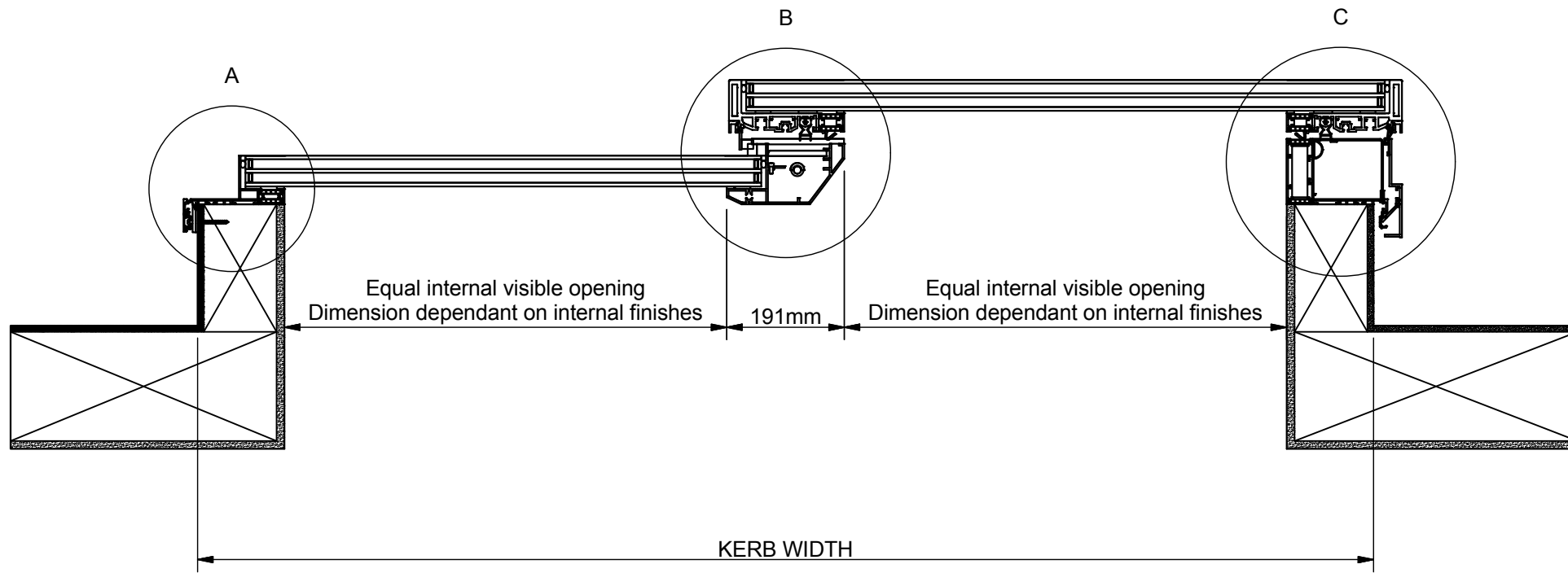


Refer to drawing 603-ASS-405 for:
Detail B
Detail C

Section A-A (Scale 1 : 10)
(Closed position)



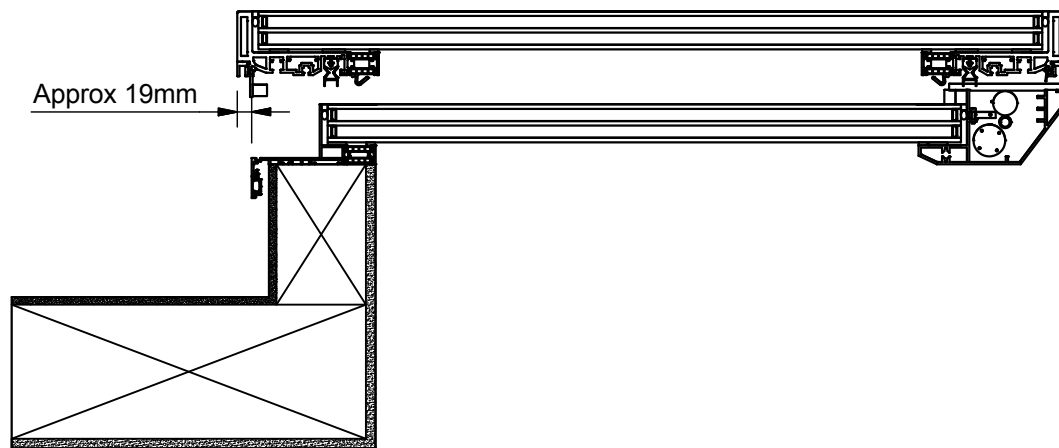
Factory applied low modulus neutral cure silicone
(standard = matt black) with polyethylene expanded foam backing rod

Powder coated external framework
(standard = RAL7015 slate grey)

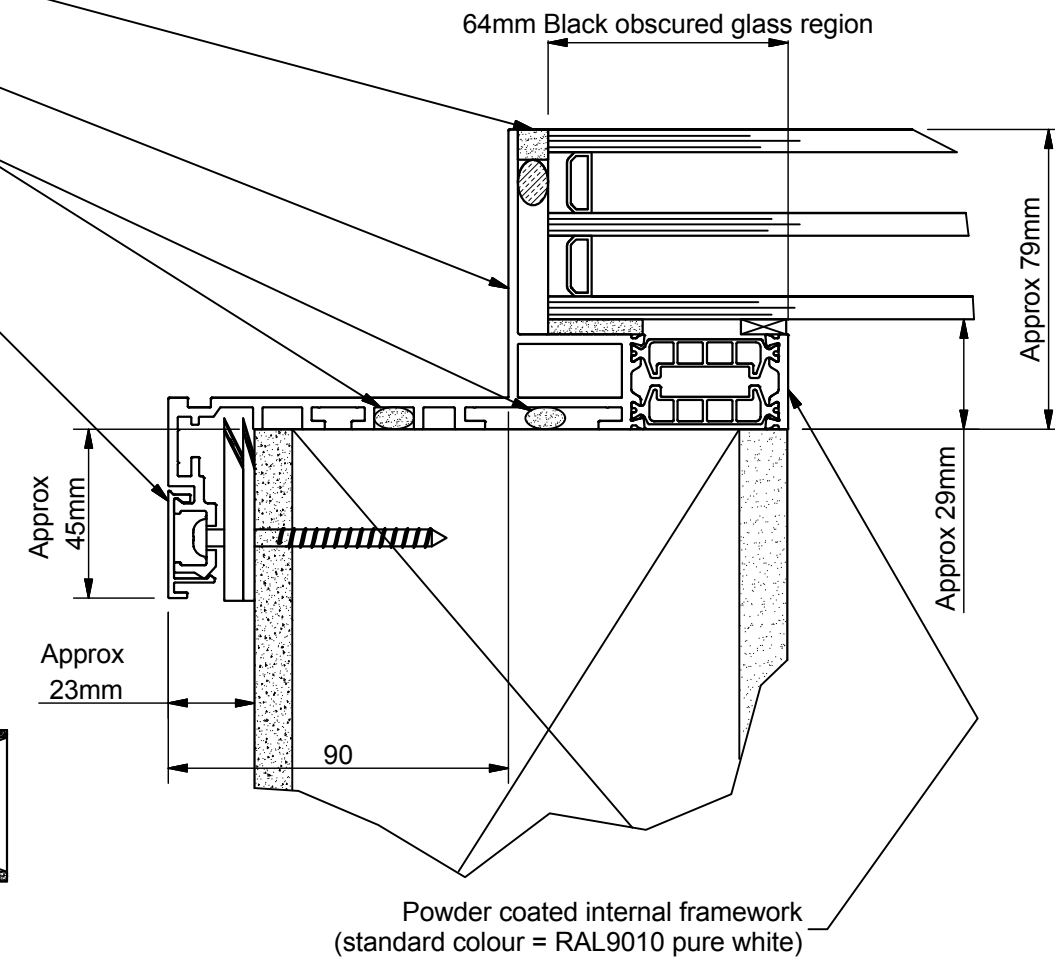
Site applied silicone seal (supplied by Glazing Vision)

Polyester powder coated aluminium clip on cover
concealing structural stainless steel kerb fixing
with packers (supplied by Glazing Vision)

Section A-A (Scale 1 : 10)
(Open position)



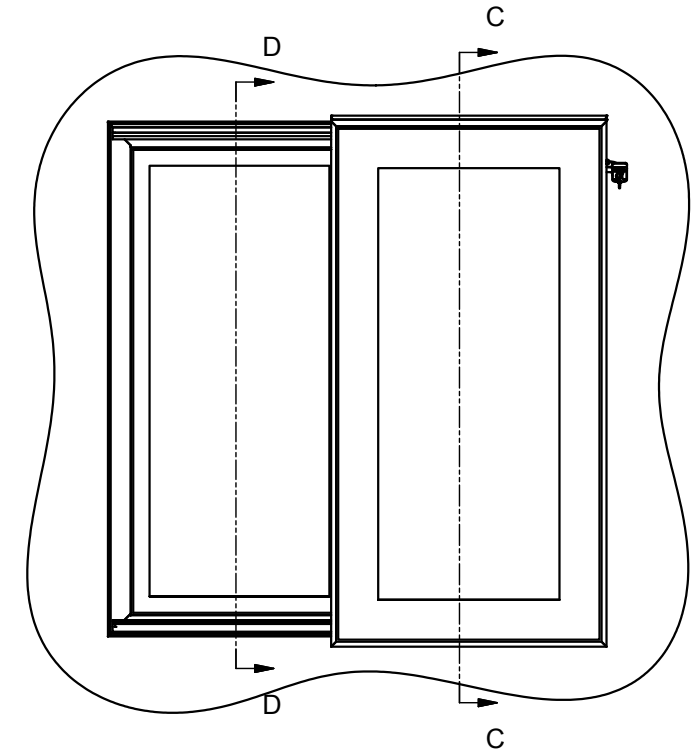
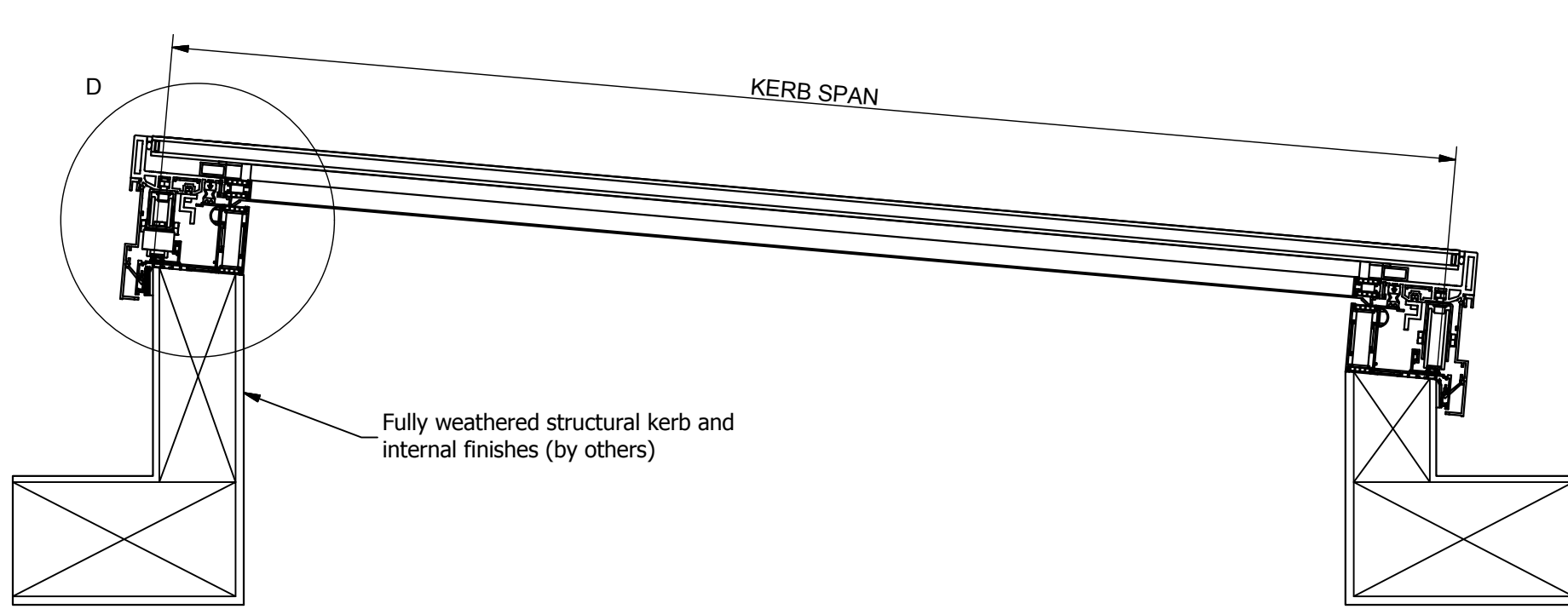
Detail A (Scale 1 : 2)



Rev	Revision Description	Drawn/ Date
-	Initial release	PGW 25.02.2014

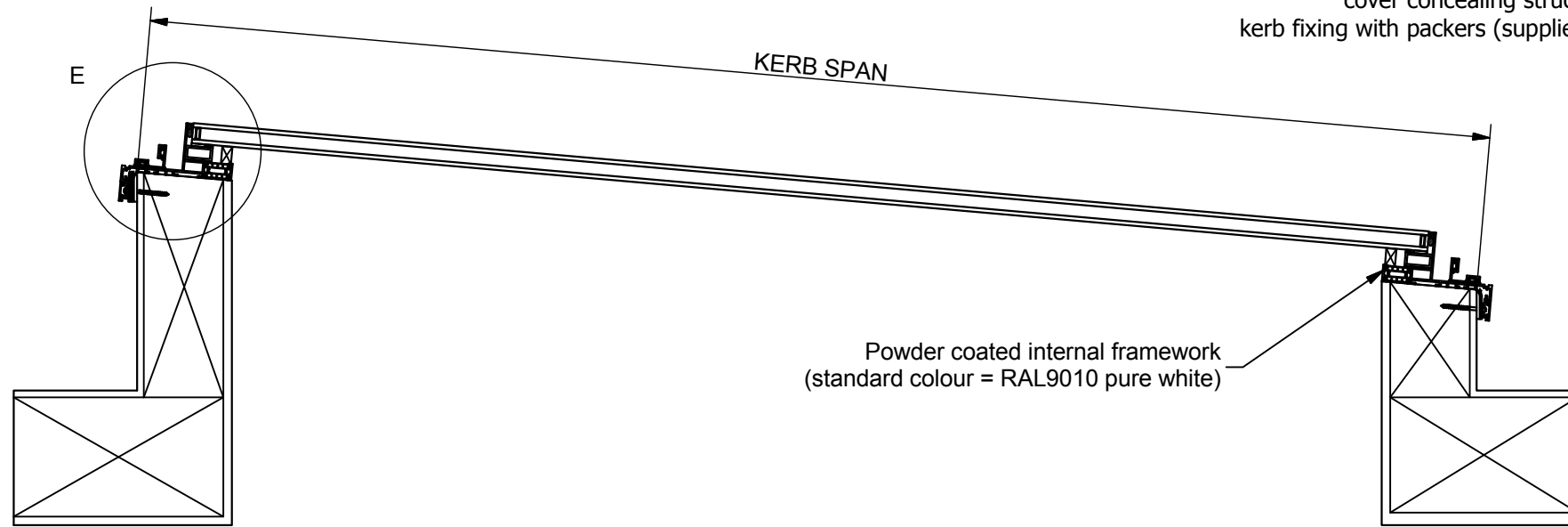
Product: 603 - GV Standard Sliding Over Fixed		Checked By:
Description: Section through Width		JamesB
Materials: N/A	Drawn By: PGW	Check Date:
Finish: Standard = RAL7015/RAL9010	Drawn Date: 25.02.2014	25.02.2014
Weight: N/A	Quantity: N/A	
Scale: 1:10 & 1:2	Drawing No: 603-ASS-403	

Section C-C (Scale 1 : 10)



Detail E (Scale 1 : 2)

Section D-D (Scale 1 : 10)



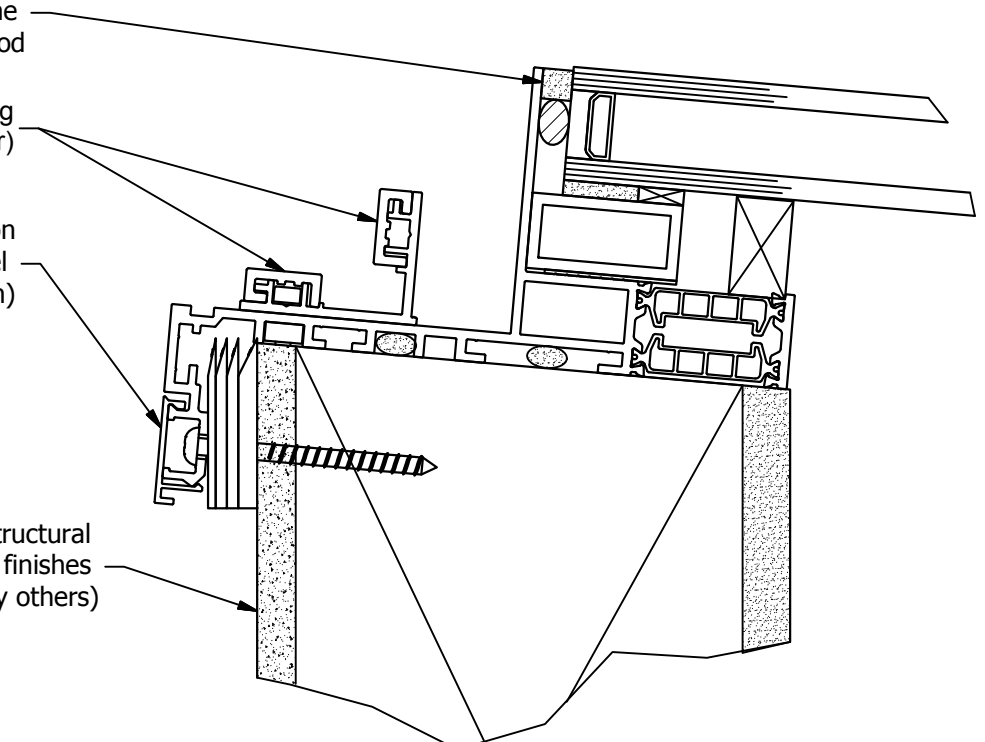
Factory applied low modulus neutral cure silicone (standard = matt black) with polyethylene expanded foam backing rod

Hard anodised track capping (natural anodised colour)

Polyester powder coated aluminium clip on cover concealing structural stainless steel kerb fixing with packers (supplied by Glazing Vision)

Fully weathered structural kerb and internal finishes (by others)

Powder coated internal framework (standard colour = RAL9010 pure white)



Rev	Revision Description	Drawn/Date
-	Initial release	PGW 13.03.2014

Product: 603 - GV Standard Sliding Over Fixed		Checked By: JamesB
Description: Sections through Span (double glaze)		Check Date: 13.03.2014
Materials: N/A	Drawn By: PGW	Drawing No: 603-ASS-408
Finish: Standard = RAL7015/RAL9010	Drawn Date: 13.03.2014	
Weight: N/A	Quantity: N/A	
Scale: 1:10		

Detail B (Scale 1 : 2)

Factory applied low modulus neutral cure silicone (standard = matt black) with polyethylene expanded foam backing rod

Primary seal for air tightness (black) (Patent applied for)

Internal seal for air tightness (white)

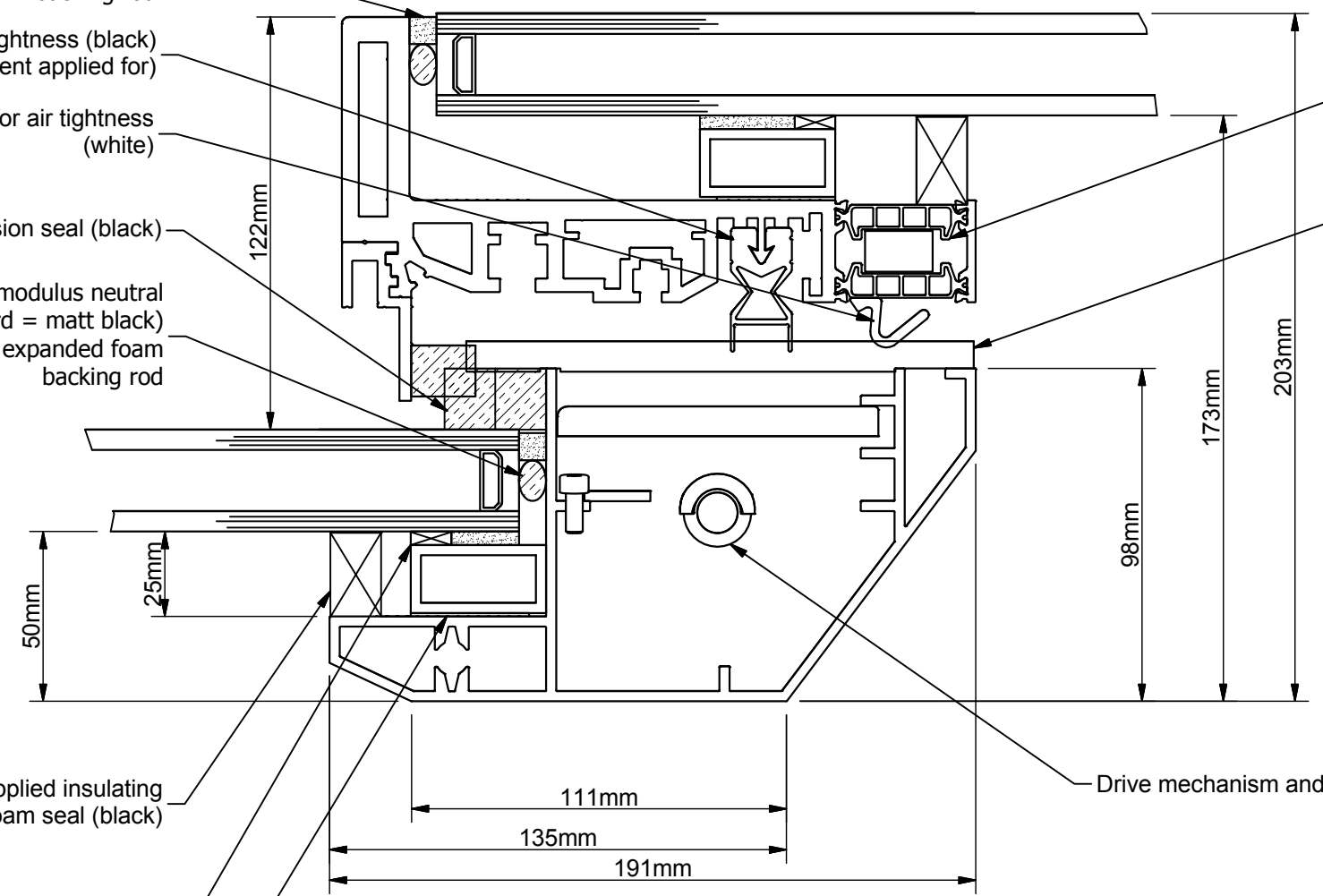
Insulating compression seal (black)

Factory applied low modulus neutral cure silicone (standard = matt black) with polyethylene expanded foam backing rod

Factory applied insulating foam seal (black)

Factory applied structural glazing tape and adhesive

Factory installed structurally bonded aluminium box section



39mm Polyamide thermal breaks (Black) with factory applied PIR insulation

Cover plate (uPVC pure white)

Detail C (Scale 1 : 2)

Insulated glazed unit*

Drive mechanism and cross shaft

Powder coated aluminium internal framework (Standard colour = RAL9010 Pure white)

Silicone seals with non-friction coating (black)

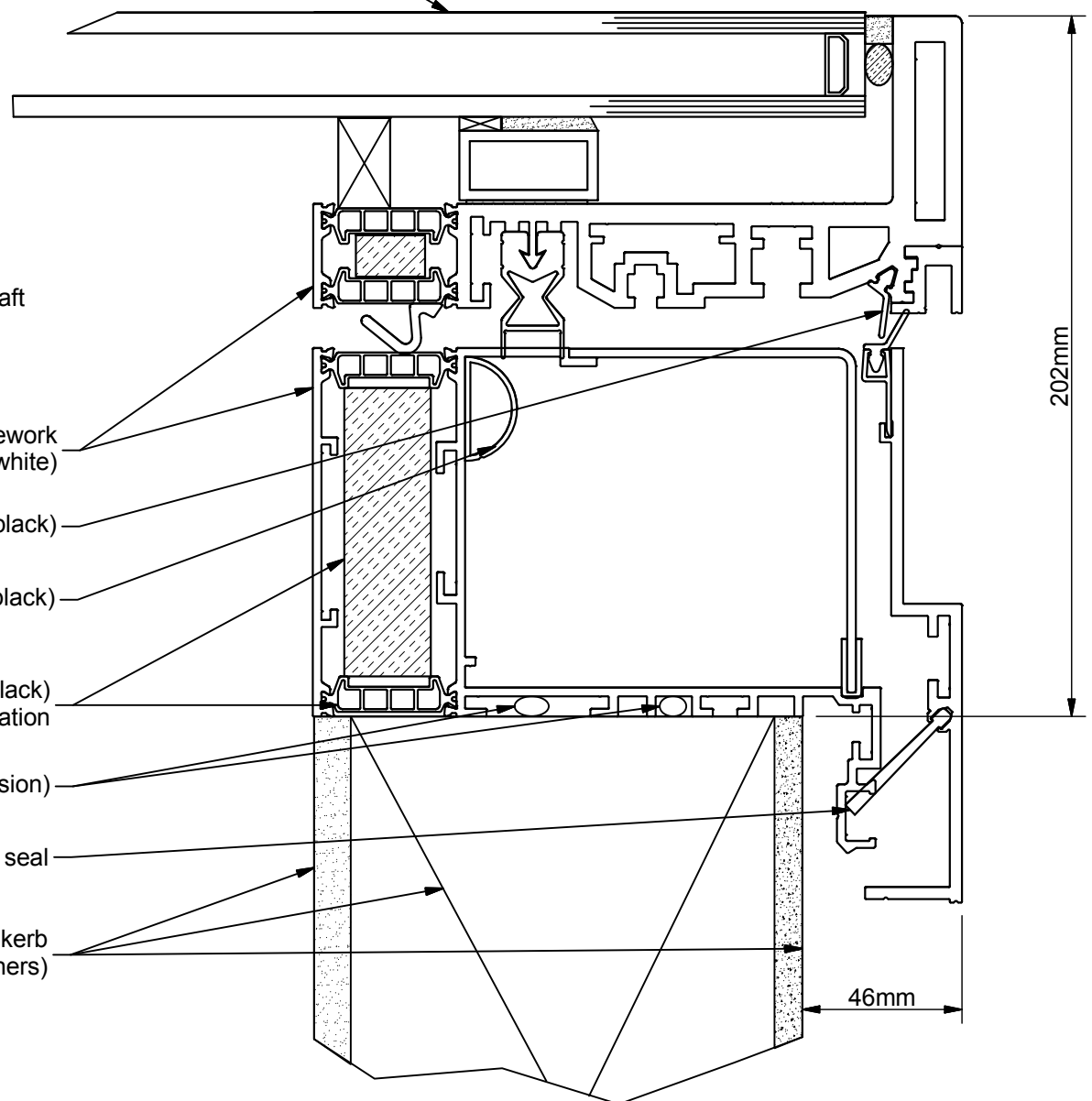
Cable trunking (black)

39mm Polyamide thermal breaks (black) with factory applied PIR insulation

Site applied silicone seal (supplied by Glazing Vision)

Brush seal

Fully weathered structural kerb and internal finishes (by others)



*Glazed unit specification dependant on client options and glazing area

Refer to 603-ASS-410 for additional framework information

GLAZING VISION

Saw Mills Road
Diss
Norfolk
IP22 4RG

Tel: +44 (0)333 8000 881
Fax: +44 (0)333 8000 882
Email: sales@glazingvision.co.uk
Website: www.glazingvision.co.uk

IT IS GLAZING VISION'S POLICY TO CONTINUOUSLY DEVELOP AND IMPROVE OUR PRODUCTS. WE THEREFORE RESERVE THE RIGHT TO MODIFY OR CHANGE THE DETAIL DESIGN AT OUR DISCRETION AND WITHOUT PRIOR NOTICE. THIS DRAWING IS COPYRIGHT AND THE SOLE PROPERTY OF GLAZING VISION LTD. THE DESIGNS/INFORMATION IT CONTAINS ARE PRIVATE AND CONFIDENTIAL. IT MUST NOT BE COPIED, EXHIBITED OR COMMUNICATED TO THIRD PARTIES FOR ANY PURPOSE OTHER THAN THAT FOR WHICH IT WAS ISSUED WITHOUT THE WRITTEN PERMISSION OF GLAZING VISION LTD.

Third angle projection unless otherwise noted.
Tolerances:
Whole numbers = ±1mm
One decimal place = ±0.5mm
Two decimal places = ±0.2mm
All angles 90±0.5 degrees unless specified
IF IN DOUBT - ASK! DO NOT SCALE
Supplier to deburr & remove sharp corners

Rev	Revision Description	Drawn/Date
-	Initial release	PGW 13.03.2014

Product: 603 - GV Standard Sliding Over Fixed		Checked By: JamesB
Description: Detailed views B and C		Check Date: 13.03.2014
Materials: N/A	Drawn By: PGW	Drawing No: 603-ASS-409
Finish: Standard = RAL7015/RAL9010	Drawn Date: 13.03.2014	
Weight: N/A	Quantity: N/A	
Scale: 1:10 & 1:2		