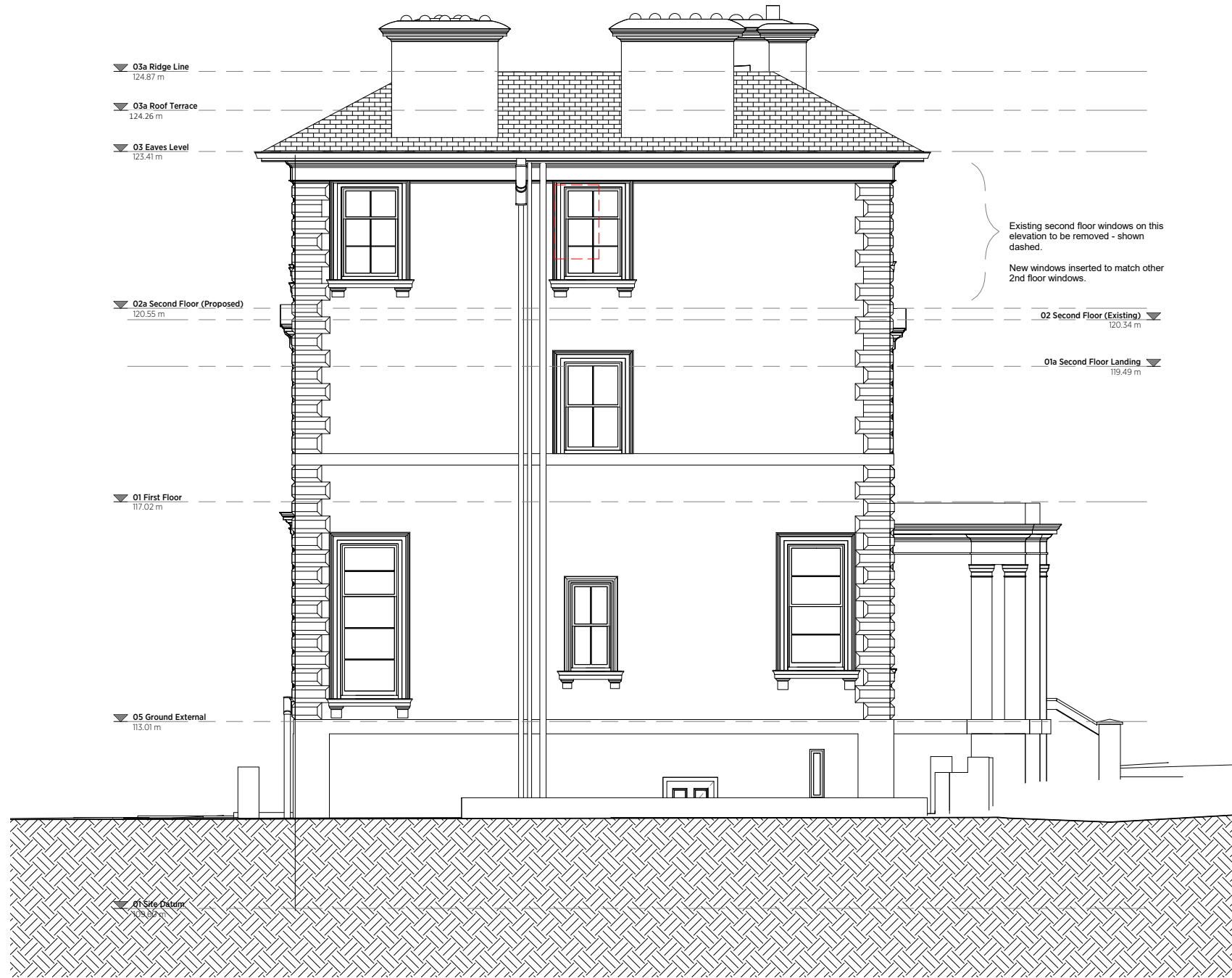


GENERAL NOTES:
 This drawing is copyright of KSR architects. This drawing must be read in conjunction with the Designer's Risk Assessment, specification and all other relevant documentation and drawings. KSR architects accept no liability for any expense, loss or damage of whatsoever nature and however arising from any variation made to this drawing or in the execution of the work to which it relates which has not been referred to them and their approval obtained.
 Areas are based on unchecked survey and are approximate only. Do not scale from this drawing or the digital data, only figured dimensions are to be used. Refer to linear scale for guidance. Check all dimensions on site prior to carrying out any works and advise any discrepancy



Existing second floor windows on this elevation to be removed - shown dashed.

New windows inserted to match other 2nd floor windows.

02 Second Floor (Existing) 120.34 m

01a Second Floor Landing 119.49 m

03a Ridge Line 124.87 m

03a Roof Terrace 124.26 m

03 Eaves Level 123.41 m

02a Second Floor (Proposed) 120.55 m

01 First Floor 117.02 m

05 Ground External 113.01 m

01 Site Datum 112.80 m

1 Proposed Elevation 4
 1:50



KSRARCHITECTS
 KSR Architects LLP mail@ksrarchitects.com
 14 Grosvenor Street t: +44 (0)20 7692 2000
 London NW1 0ND www.ksrarchitects.com

Oak Hill House
 Elevation 4 (SW)

Date: Nov 2018	Status: Planning
Scale: 1:50 @A1	© KSR Architects
Project Ref: 18018	Drawing No: P304 Revision: A