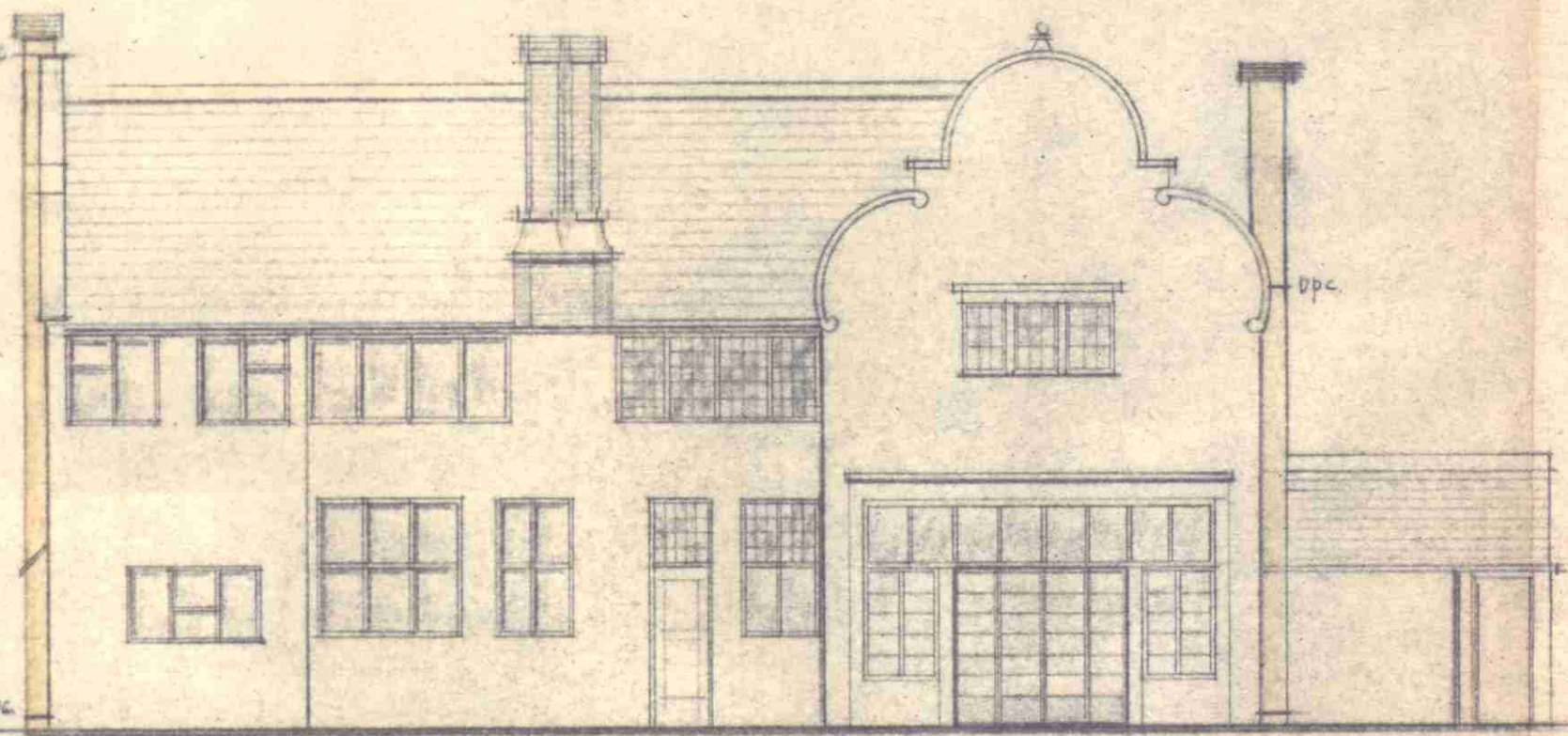
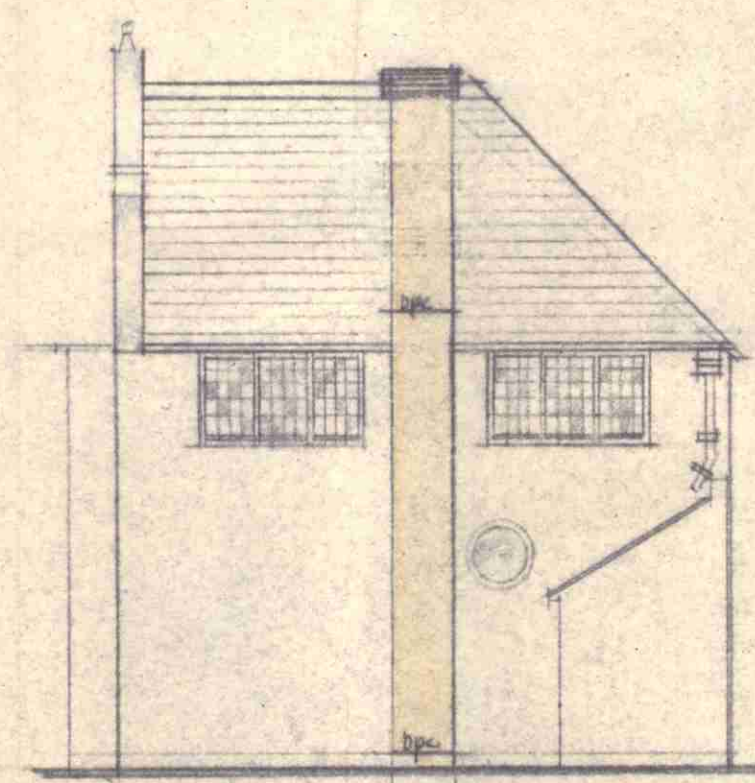


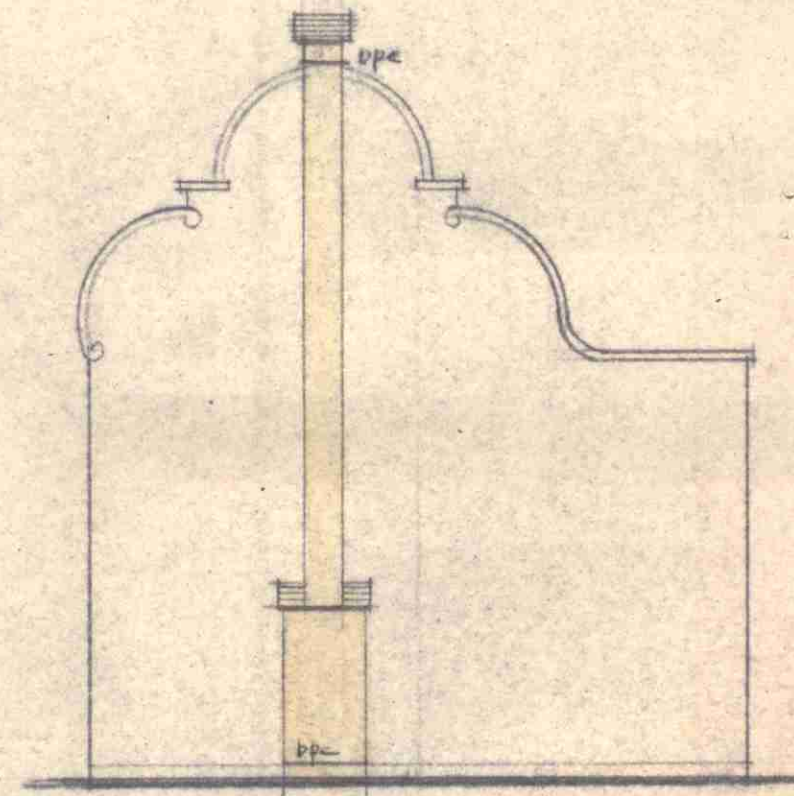
REF. TO
23 AUG 1956
No.
ARCHIT. CO. 1111



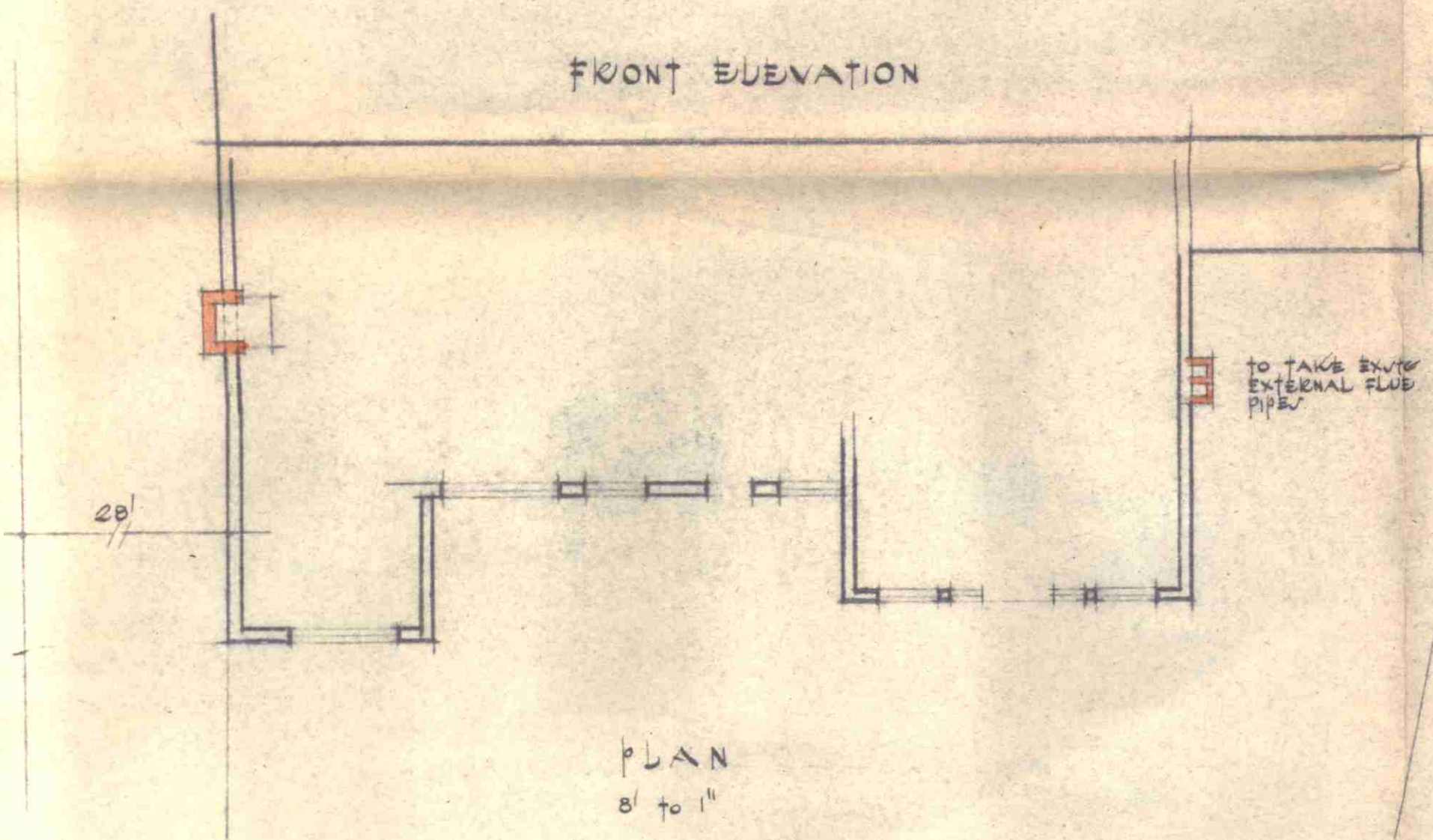
FRONT ELEVATION



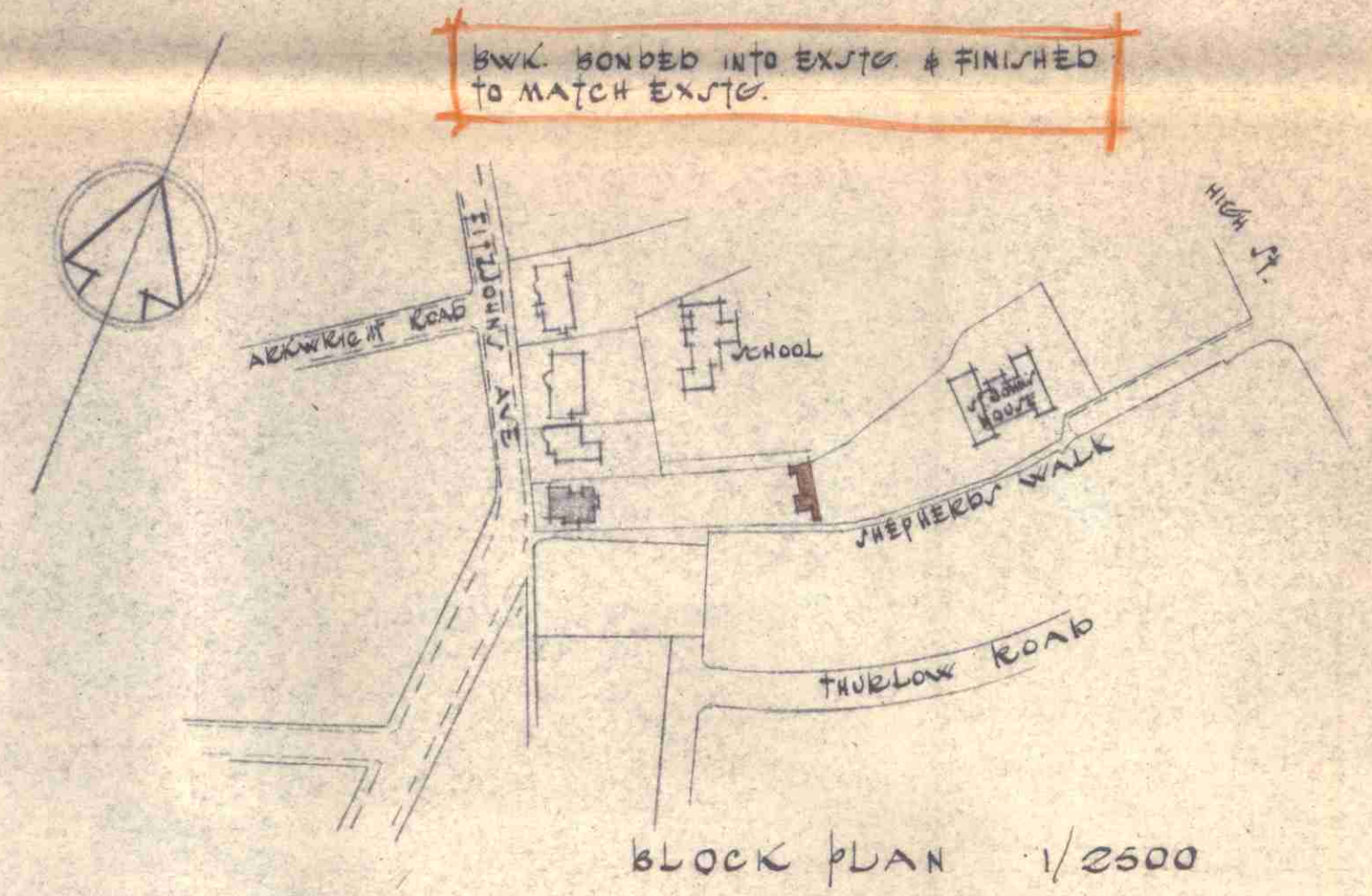
NORTH ELEVATION



SOUTH ELEVATION



PLAN
8' to 1''



BLOCK PLAN 1/2500

"THE WHITE HOUSE" FITZJOHN'S AVENUE, HAMPSTEAD
PROPOSED CHIMNEY STACKS for ST. GABRIEL'S SECRETARIAT COLLEGE.