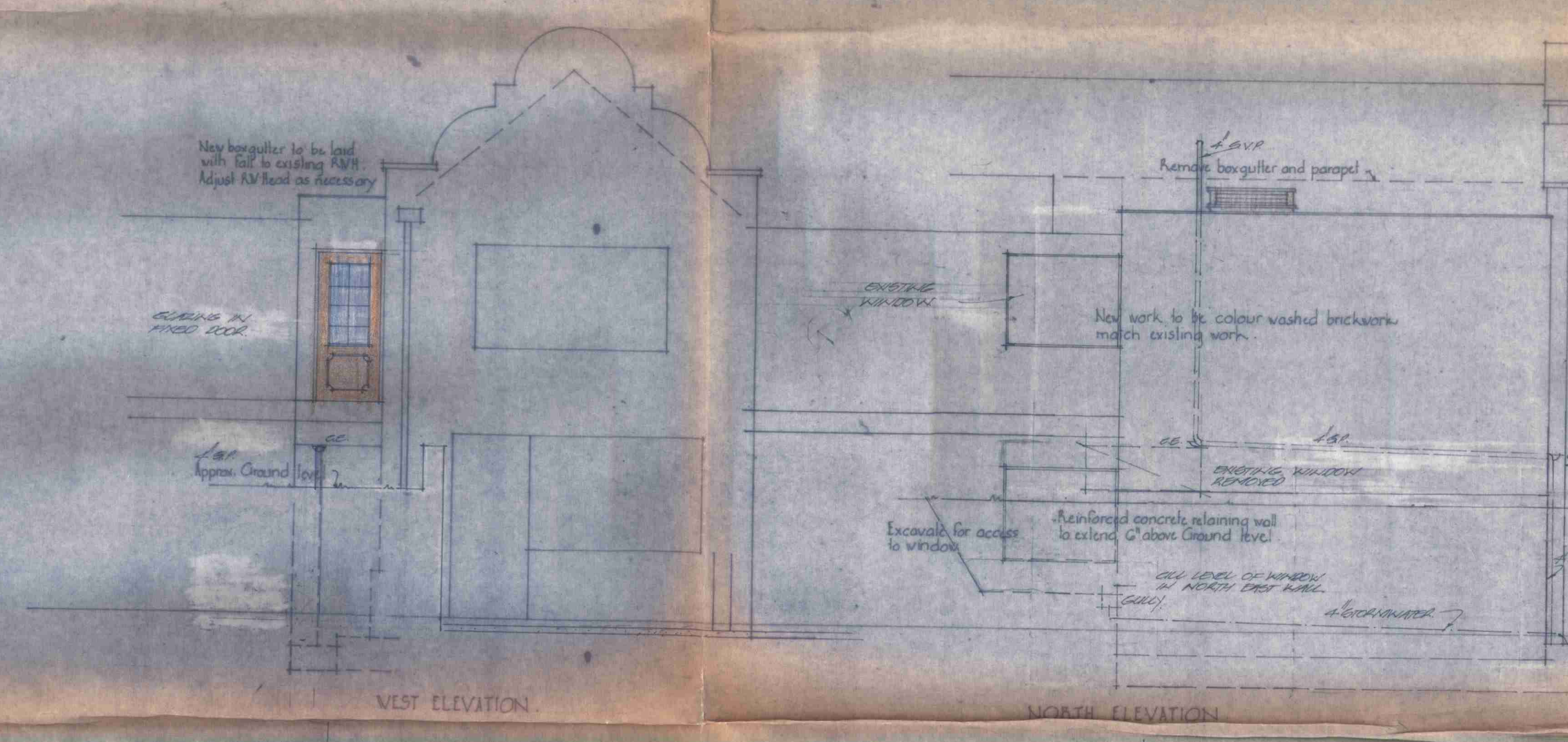
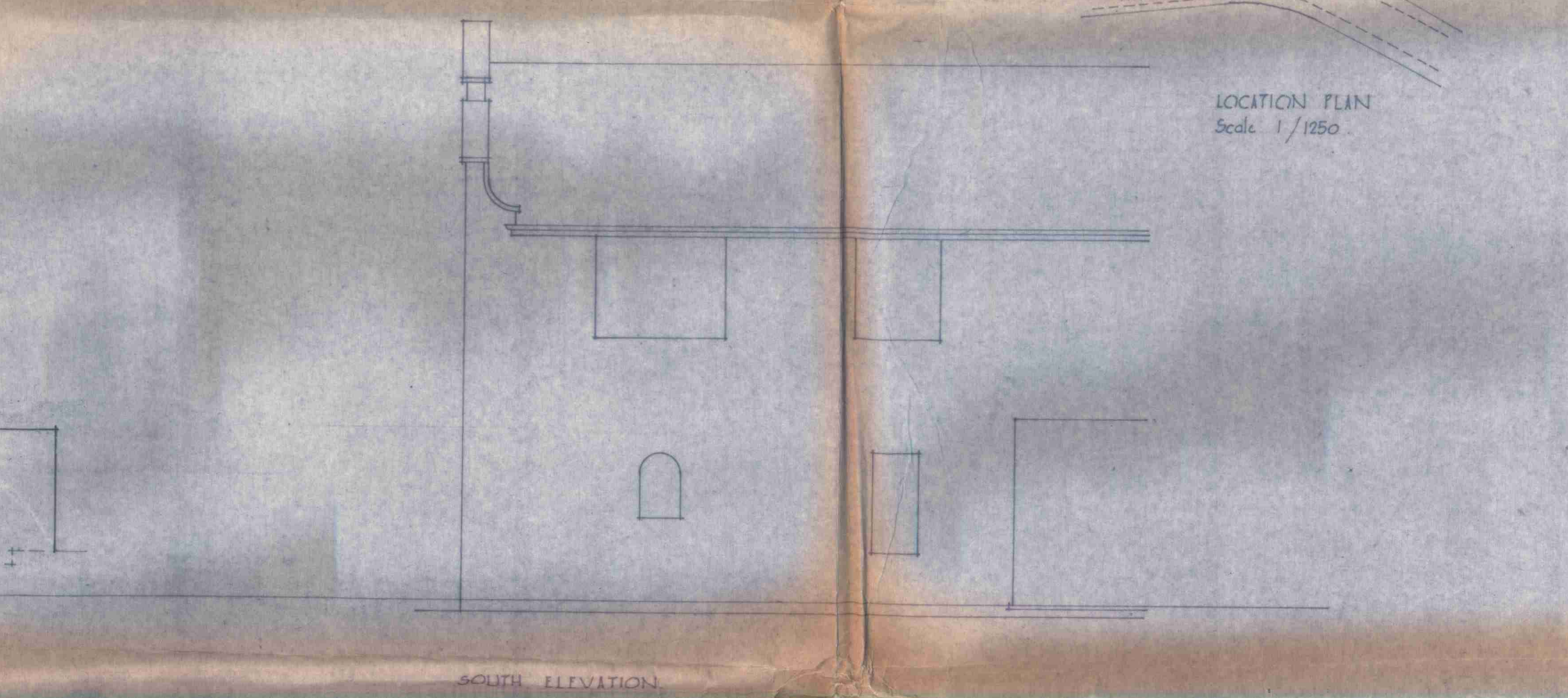


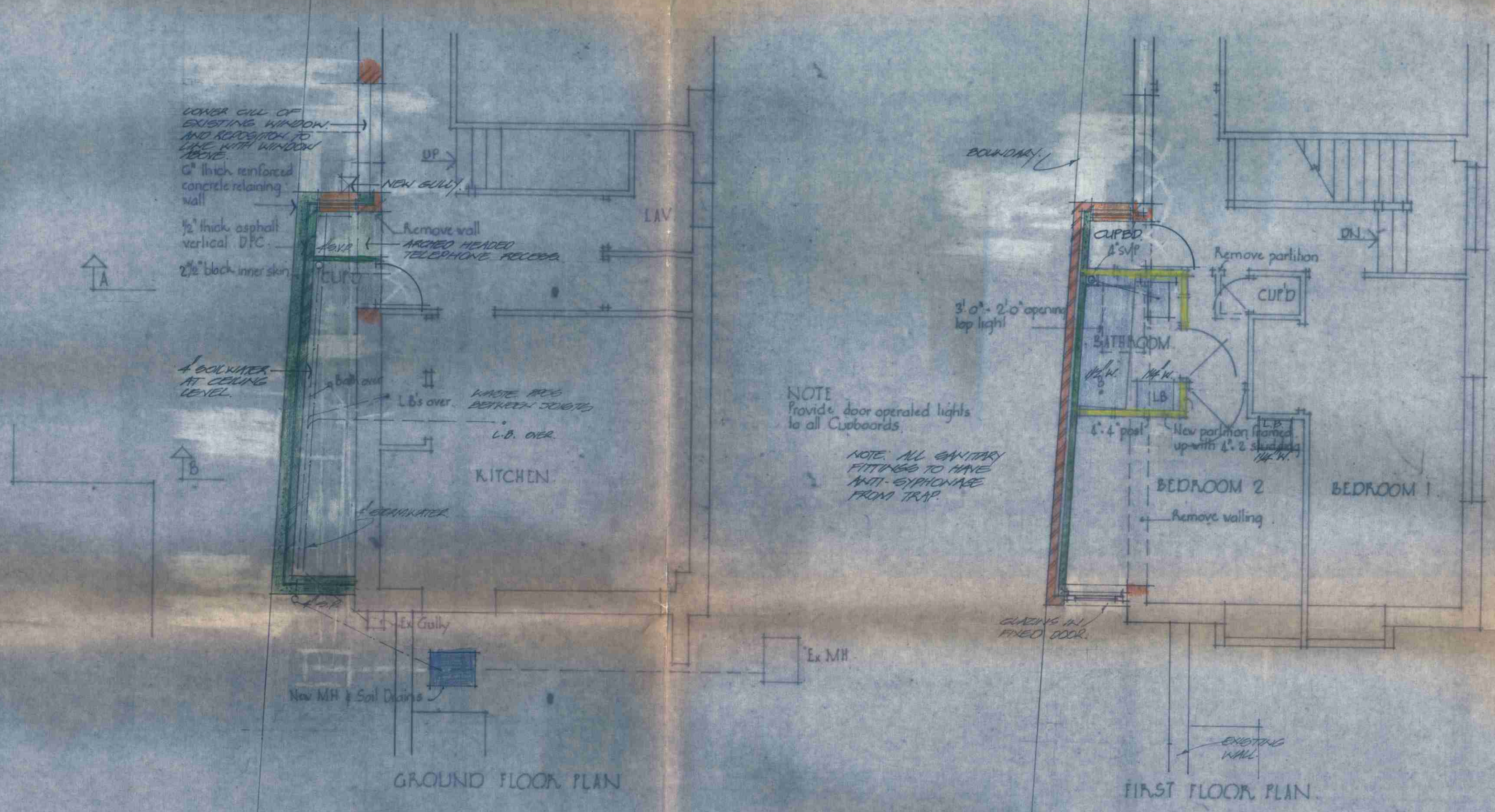
LOCATION PLAN
Scale 1/1250



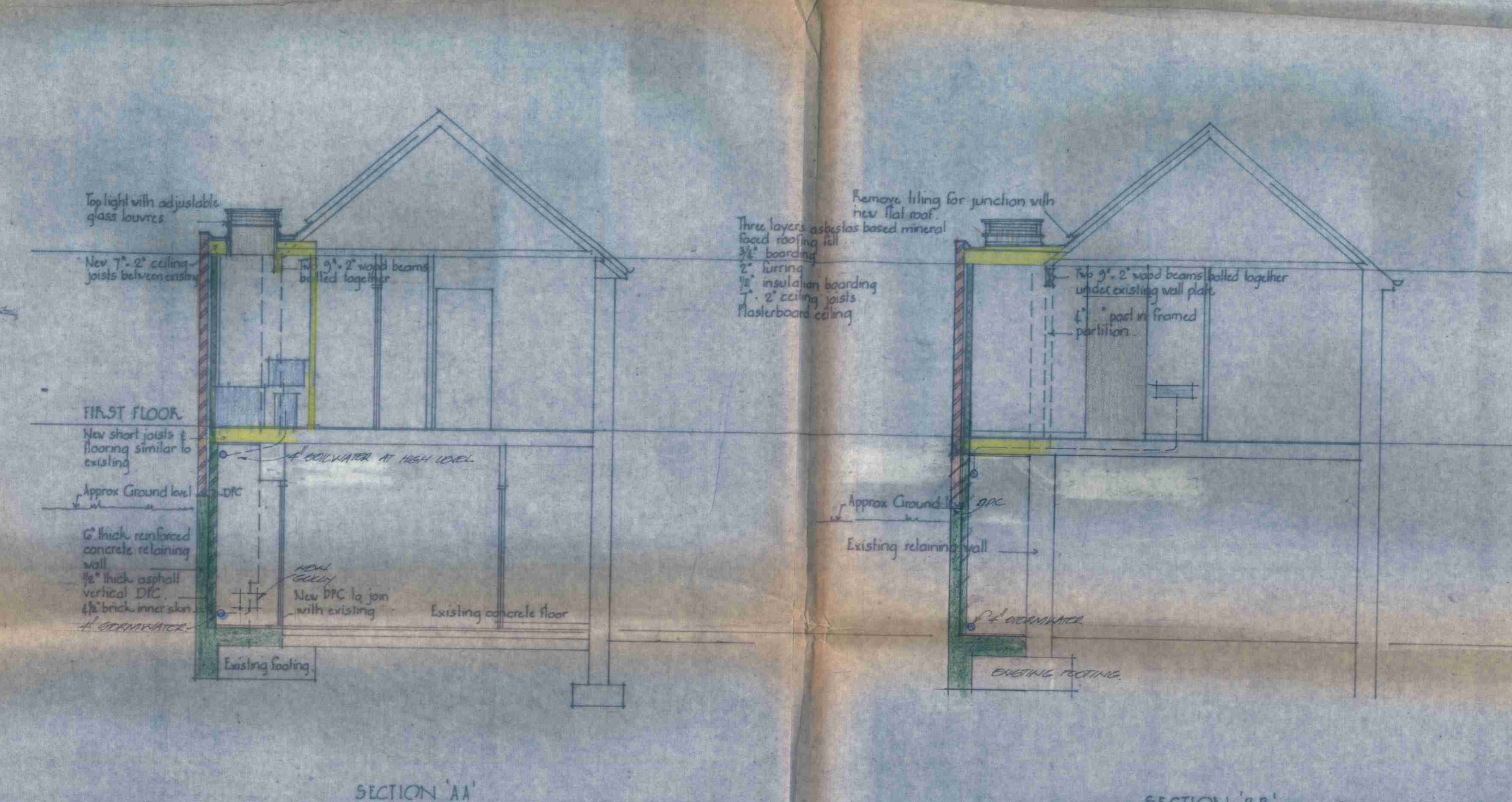
WEST ELEVATION NORTH ELEVATION



SOUTH ELEVATION



GROUND FLOOR PLAN FIRST FLOOR PLAN



SECTION 'AA' SECTION 'BB'

CTP/F7/2/C/14256

DATE MAY 1971
SCALE 1/2" = 1'-0"
DRWG NO. JI 2156/G8

THE WHITE HOUSE FITZJOHNS AVENUE HAMPSTEAD
PROPOSED ALTERATIONS AND ADDITIONS TO STAFF ACCOMMODATION

- AMENDMENTS 26.7.72
1. REVISION TO DRAWING TO LIAISE DELINEARY
 2. REVISION WALL BOARDING FOR ACCESS TO FRONT
 3. GARDENS IN FRONT DOOR TO FIRST FLOOR
 4. WINDOWS ADDED TO NORTH END ELEVATION
 5. REVISION TO FIRST FLOOR
 6. TECHNICAL REVISION TO GROUND FLOOR
 7. GARDENS EXTENDED
 8. GARDENS EXTENDED ON FIRST FLOOR AND MOVED INTO GARDENS
 9. BATHROOM REVISION IN BED. 2
 10. REVISIONS MADE
 11. BATHROOM LINE ADDED
- AMENDMENTS 28.7.72
1. Inner skin of retaining wall altered to 2 1/2"
 2. Position of new Manhole altered
 3. Retaining wall returned at NW Corner
 4. Door to space behind retaining wall omitted
 5. Alterations to area side wall deleted

LONDON BOROUGH OF CAMDEN
PLANS APPROVED
18 SEP 1972
ON BEHALF OF THE COUNCIL

Richardson Bellamy & Denton
28 July 1972

RICHARDSON BELLAMY & DENTON
CHARTERED ARCHITECTS
17 EXCHANGE ROAD WATFORD Herts.