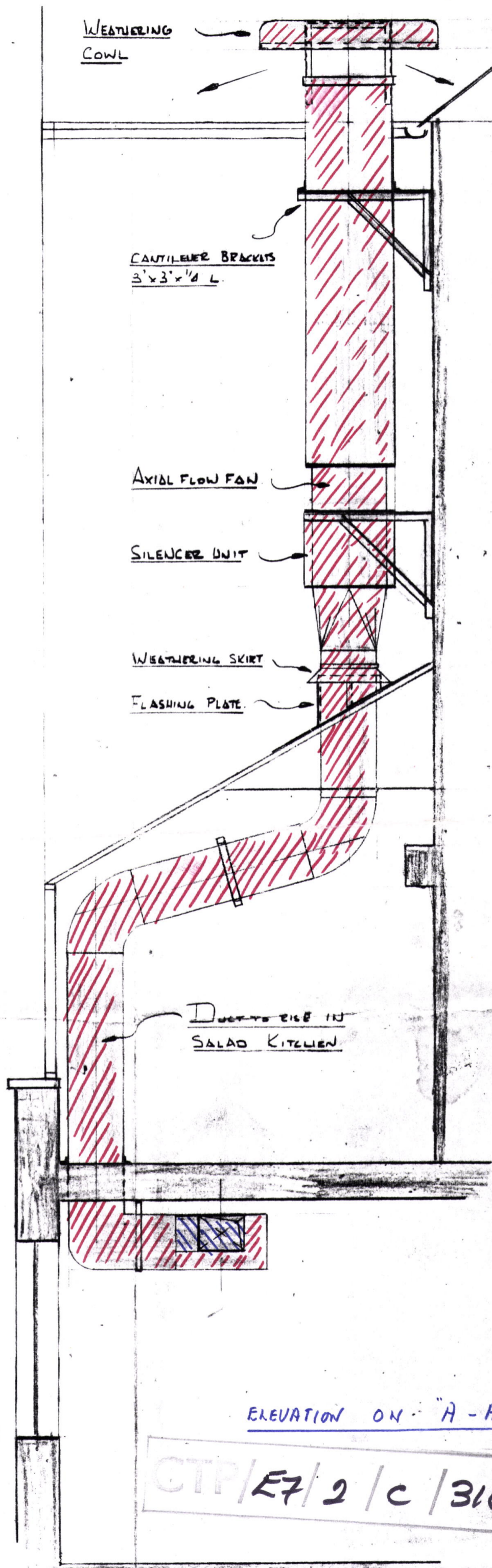


ADM 179/2  
30 DEC 80

SCALE  $\frac{3}{8}'' = 1 \text{ FOOT}$



LONDON BOROUGH OF CAMDEN  
TOWN AND COUNTRY PLANNING ACTS  
18 MAR 1981  
PLANS ~~NOT APPROVED~~ APPROVED  
ON BEHALF OF THE COUNCIL

**CASE COPY.**

ELEVATION ON "A-A"

CTP/E7/2/C/31683