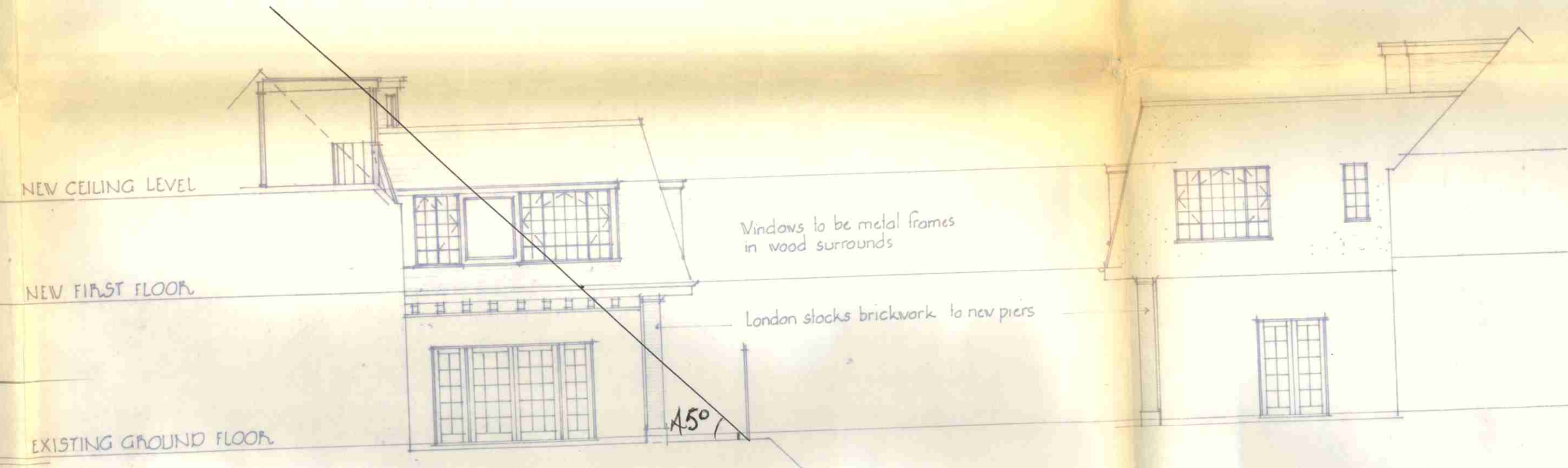
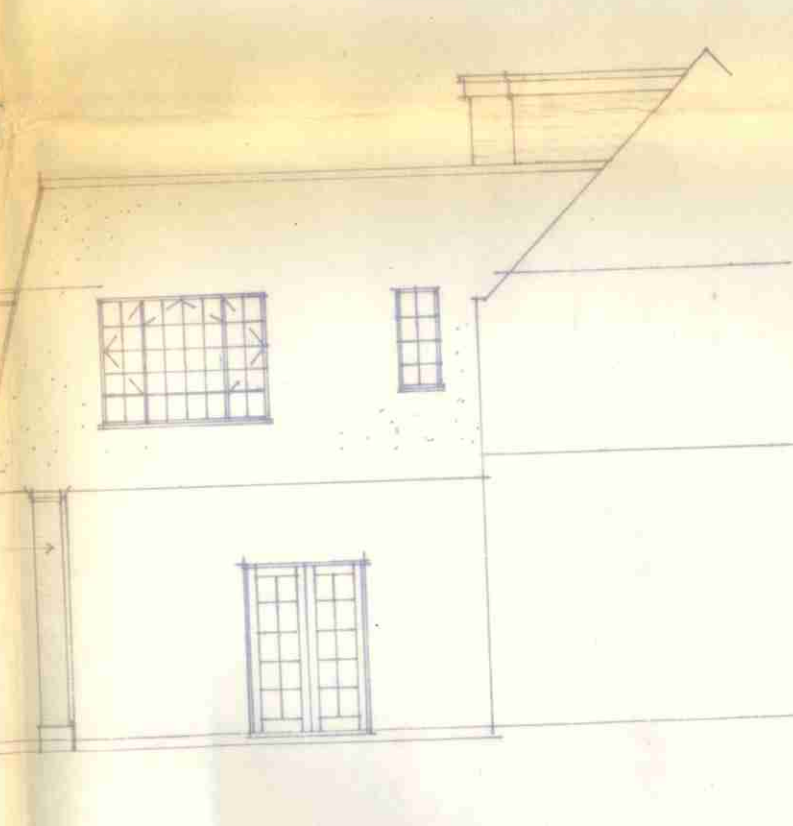


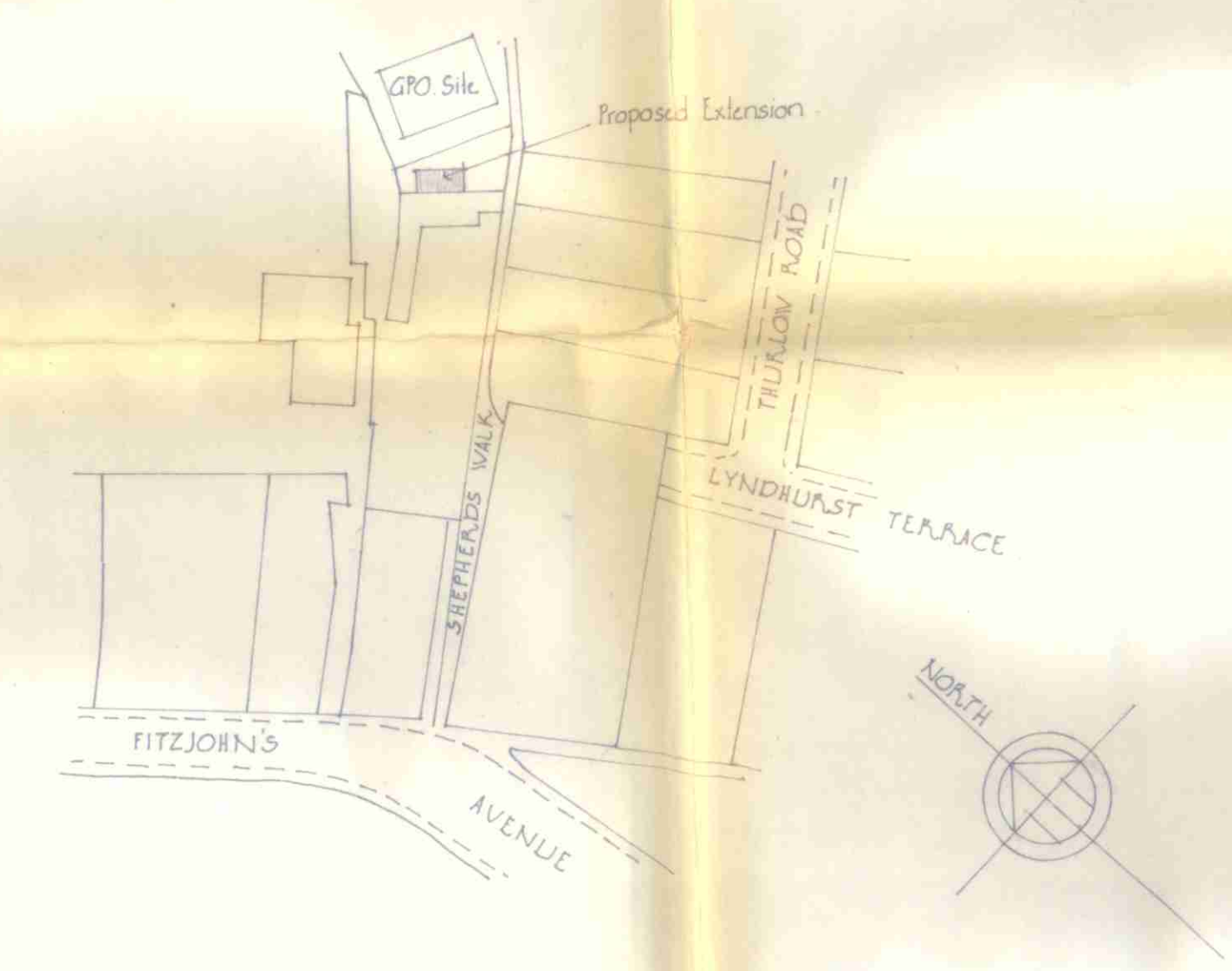
LONGITUDINAL SECTION 'AA'



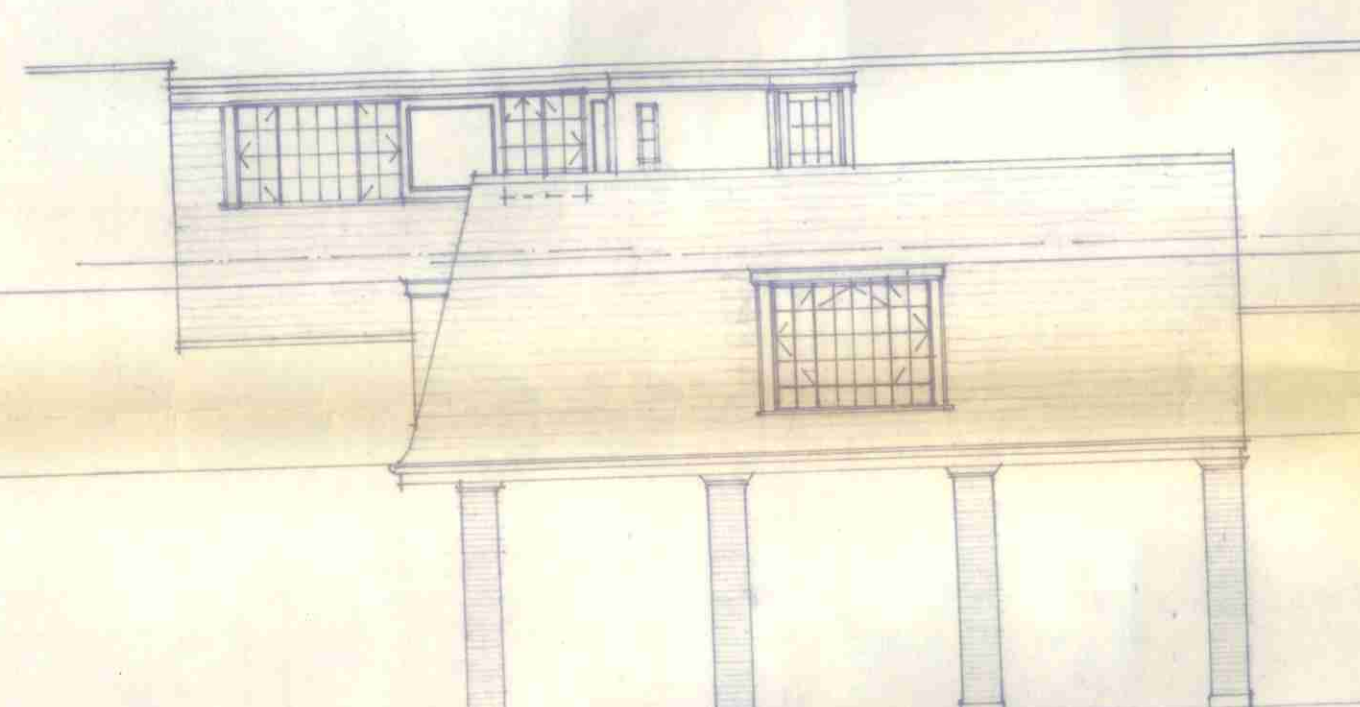
SOUTH EAST ELEVATION



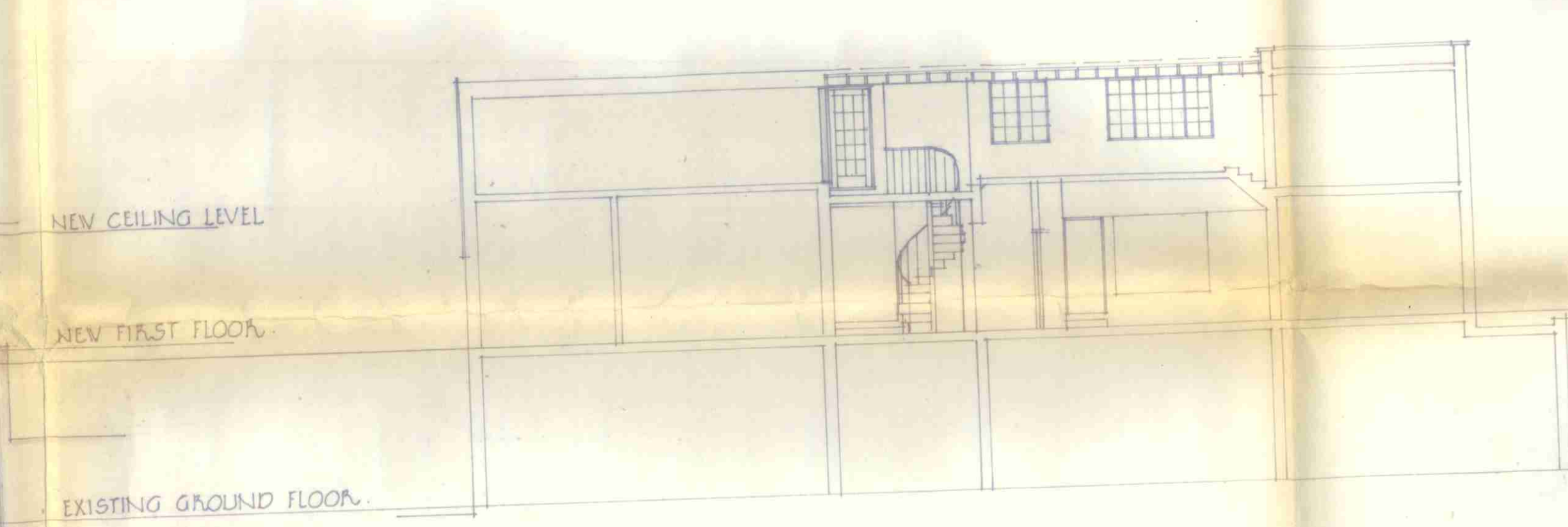
NORTH WEST ELEVATION



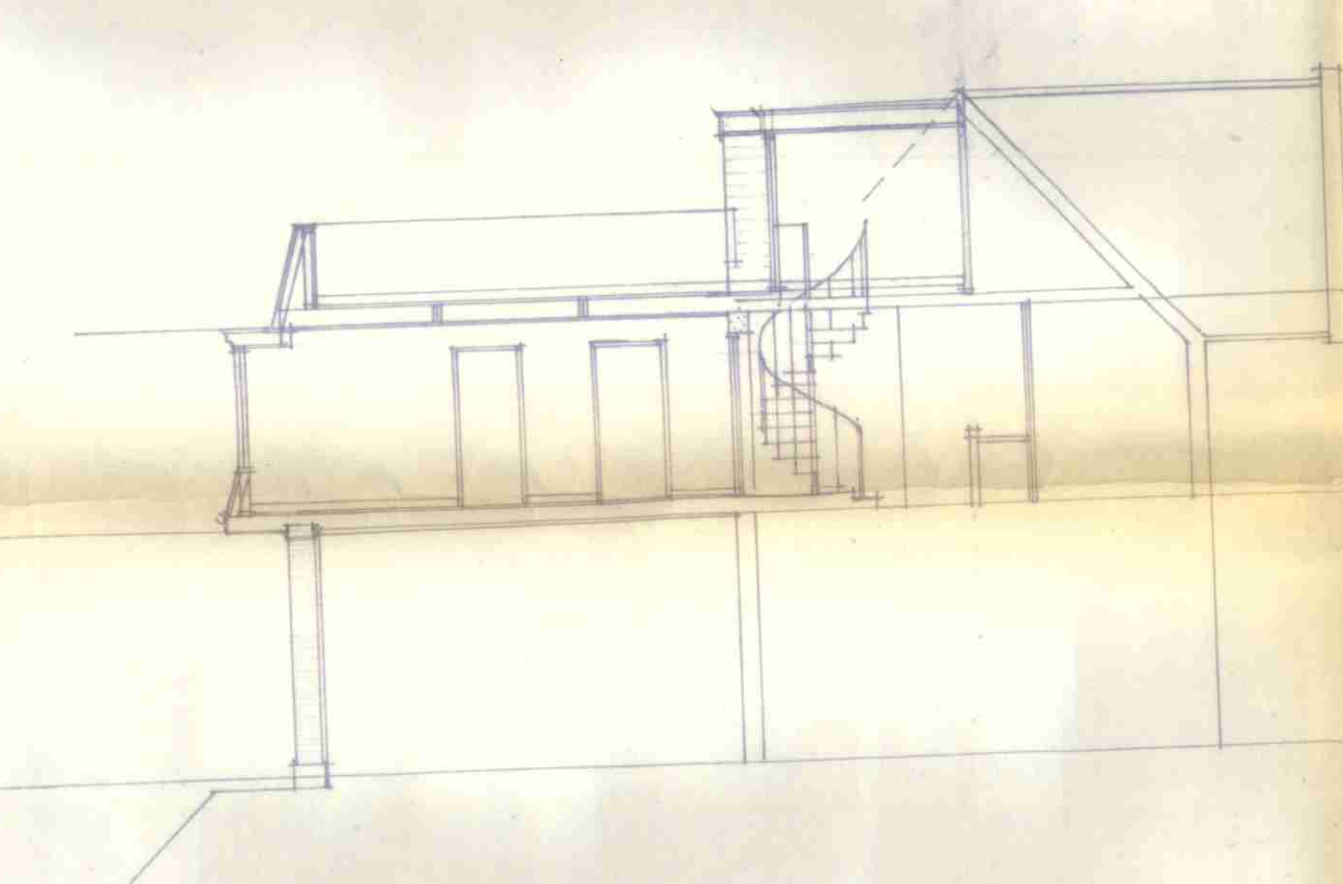
LOCATION PLAN Scale 1:1250



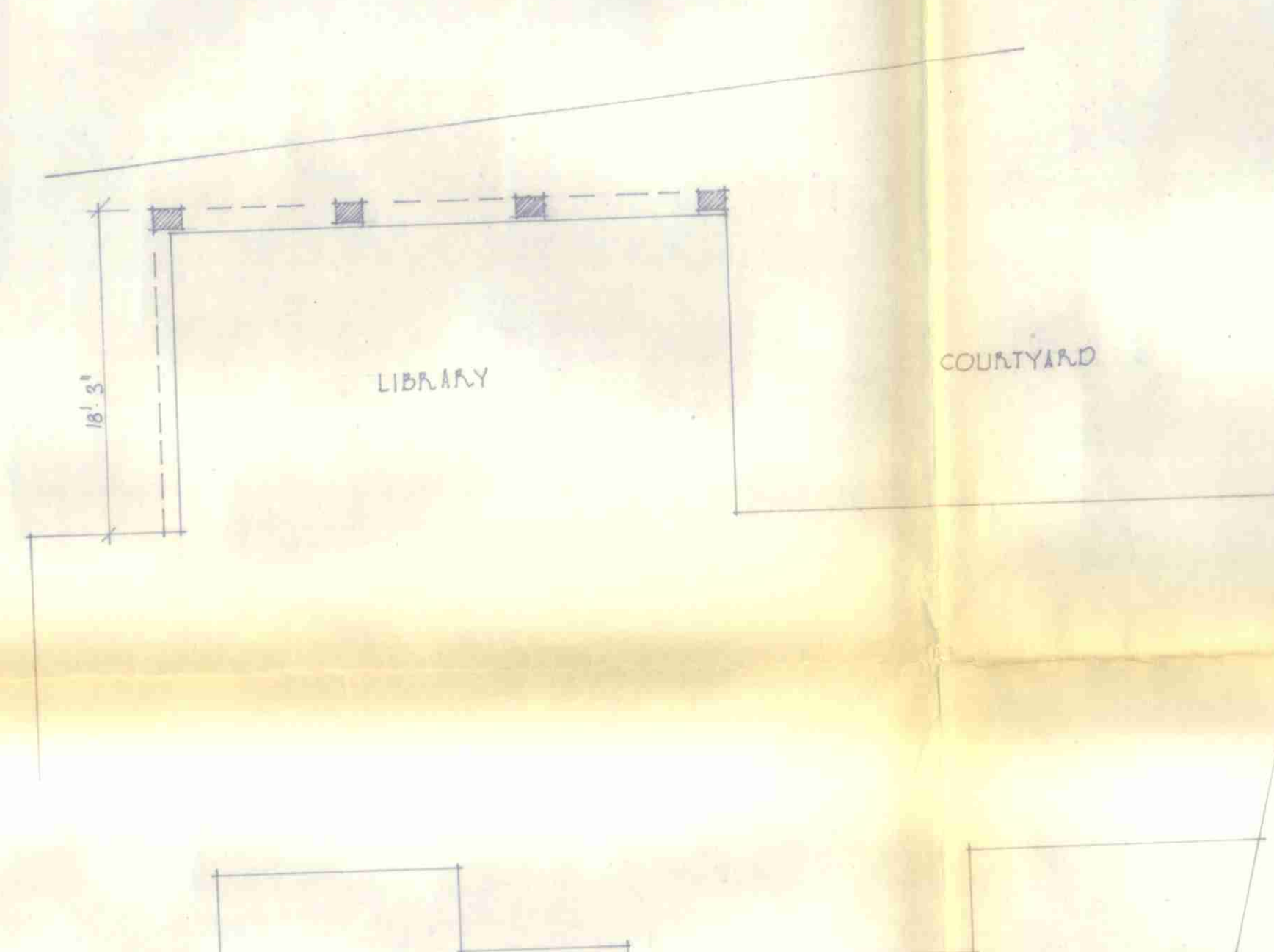
NORTH EAST ELEVATION (NEAR OF LIBRARY)



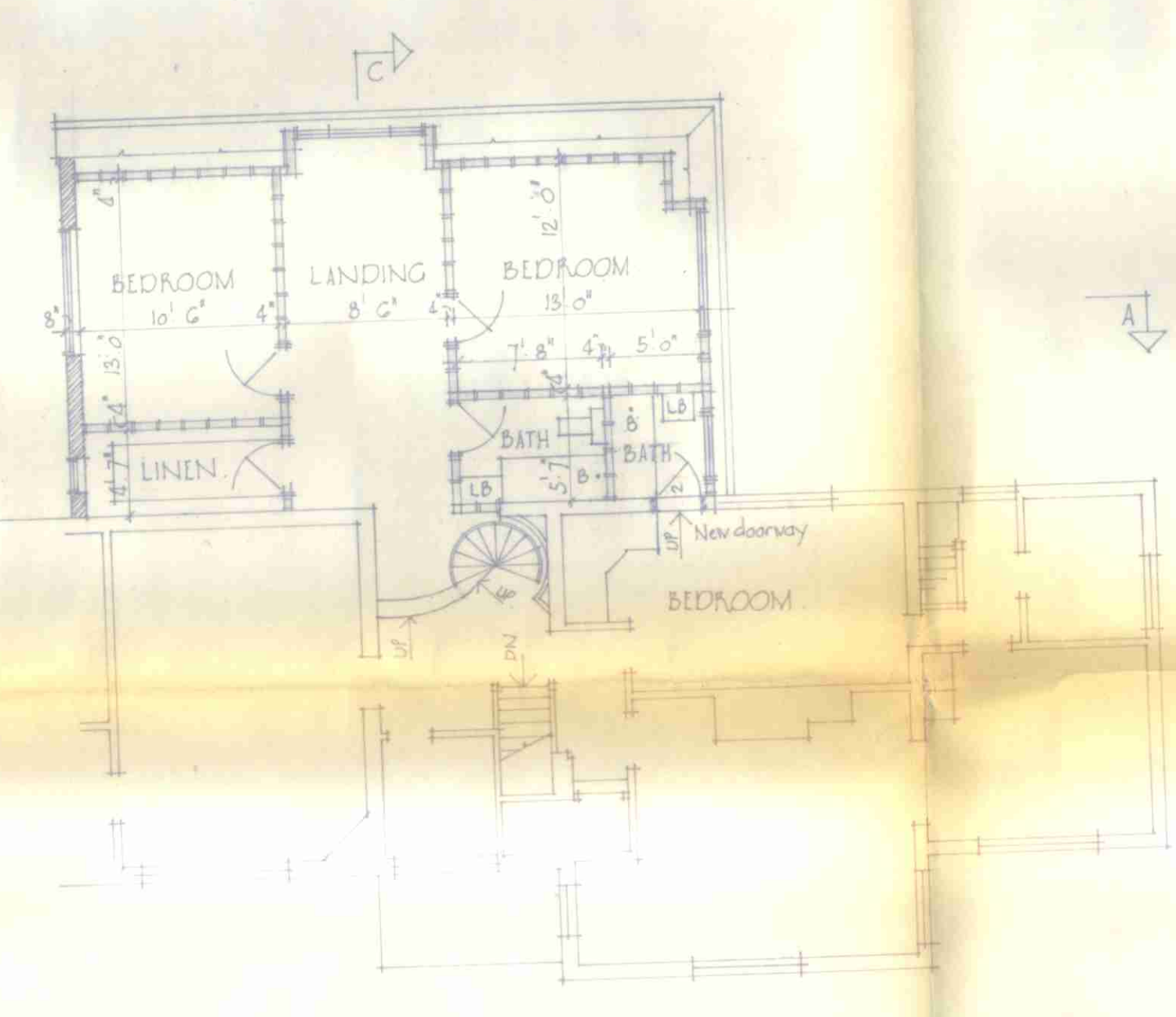
LONGITUDINAL SECTION 'BB'



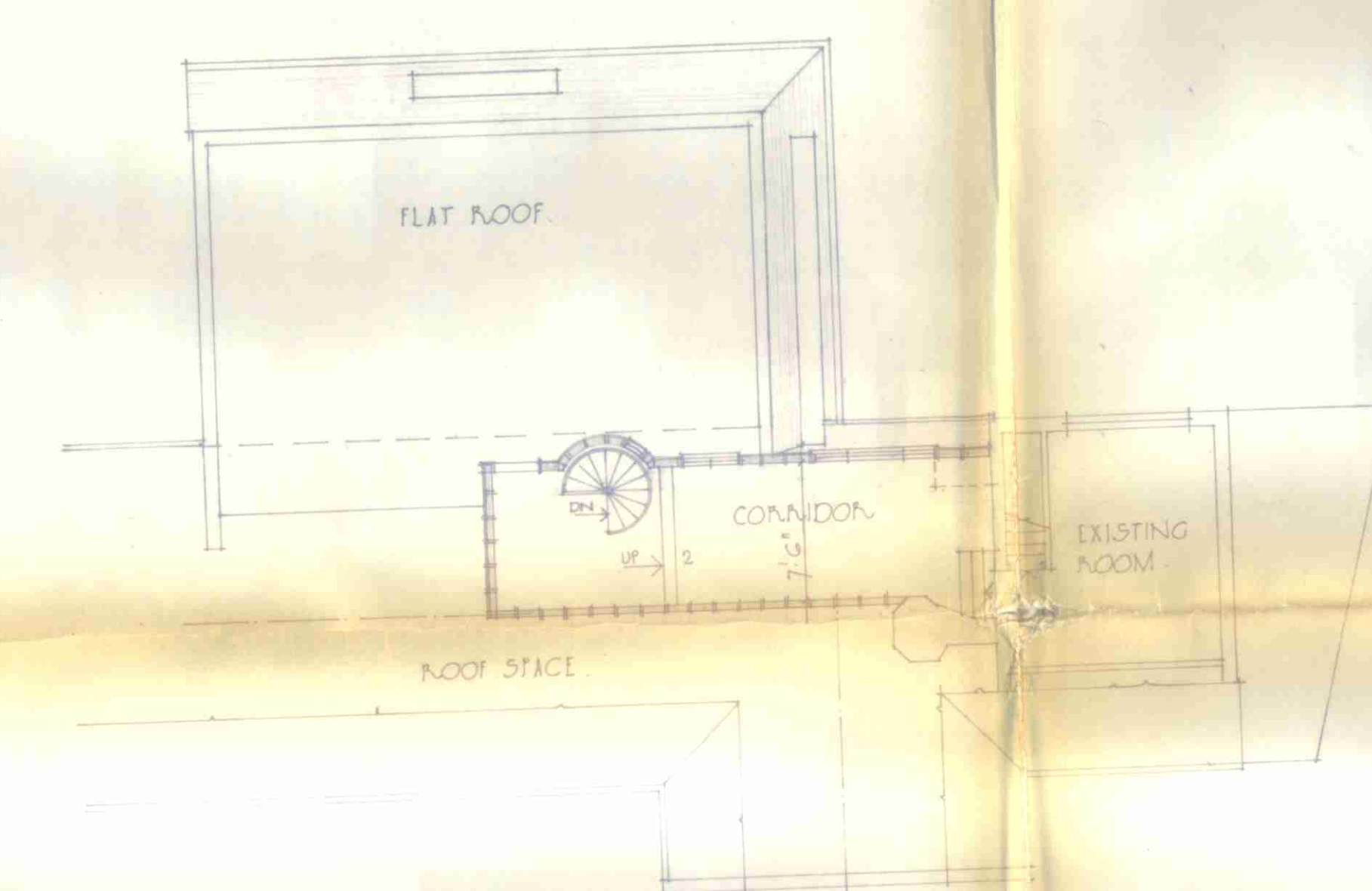
SECTION CC



GROUND FLOOR PLAN



FIRST FLOOR PLAN



SECOND FLOOR PLAN

DRWG N° G8. 2288/4

LONDON BOROUGH OF CAMDEN  
 PLANS ~~APPROVED~~ DISAPPROVED  
 10 FEB 1971  
 ON BEHALF OF THE COUNCIL

GTP/F4/2/c/1000

THE WHITE HOUSE  
 FITZJOHNS AV HAMPSTEAD

PROPOSED EXTENSION  
 OVER LIBRARY

SCALE 1/8" = 1'0" DRAWG NO.  
 NOV 1970 G8. 2288/4

RICHARDSON BELLAMY & BENTON  
 CHARTERED ARCHITECTS  
 17 EXCHANGE ROAD WATFORD