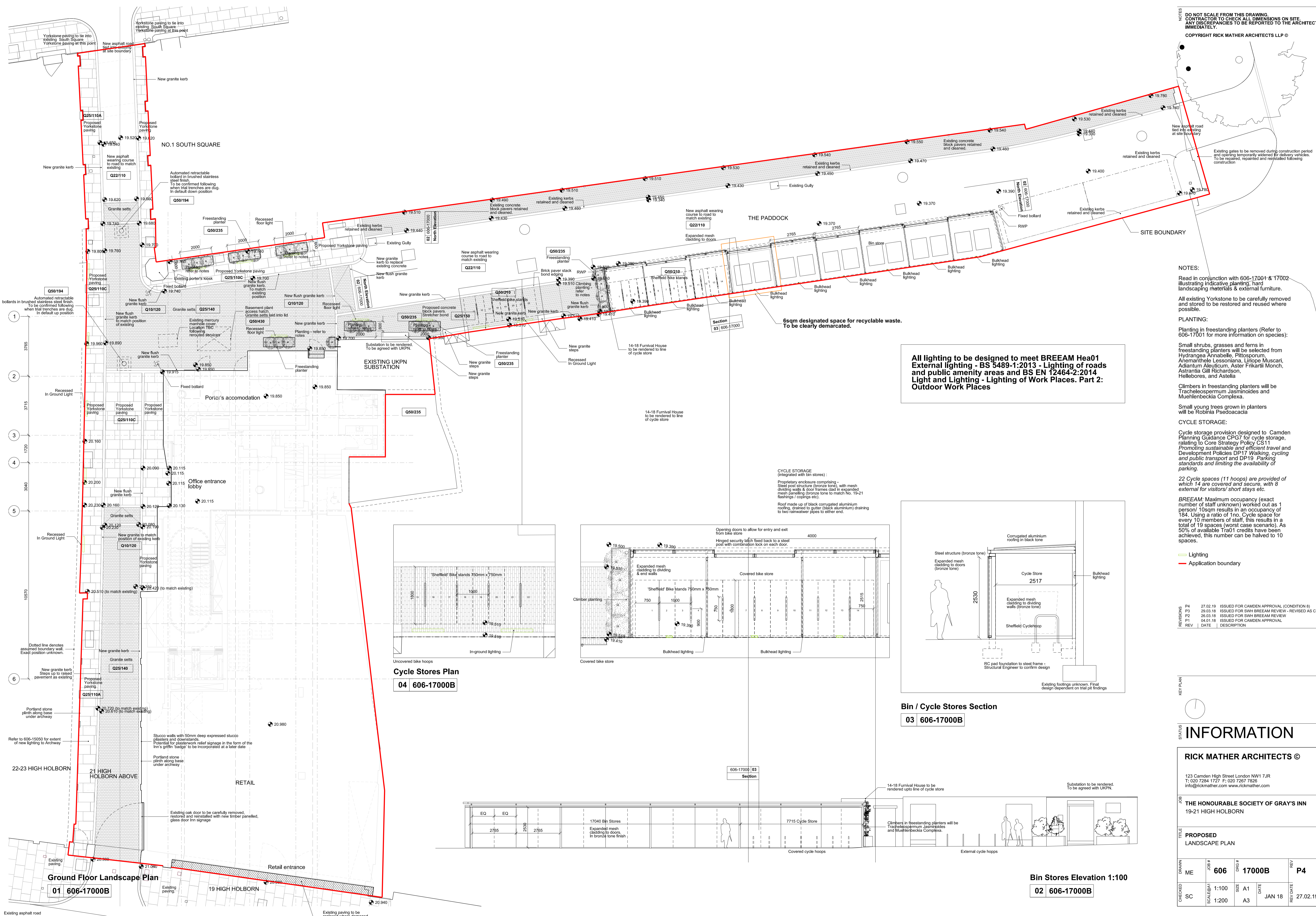


DO NOT SCALE FROM THIS DRAWING.  
CONTRACTOR TO CHECK ALL DIMENSIONS ON SITE.  
ANY DISCREPANCIES TO BE REPORTED TO THE ARCHITECT IMMEDIATELY.  
COPYRIGHT RICK MATHER ARCHITECTS LLP ©



All lighting to be designed to meet BREEAM Hea01 External lighting - BS 5489-1:2013 - Lighting of roads and public amenity areas and BS EN 12464-2:2014 Light and Lighting - Lighting of Work Places. Part 2: Outdoor Work Places

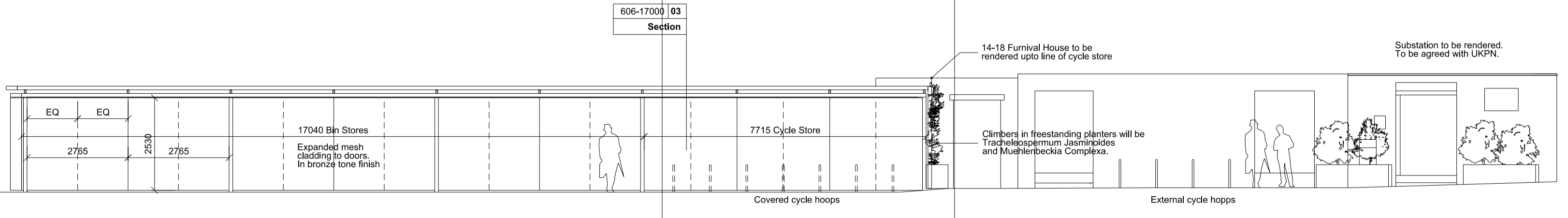
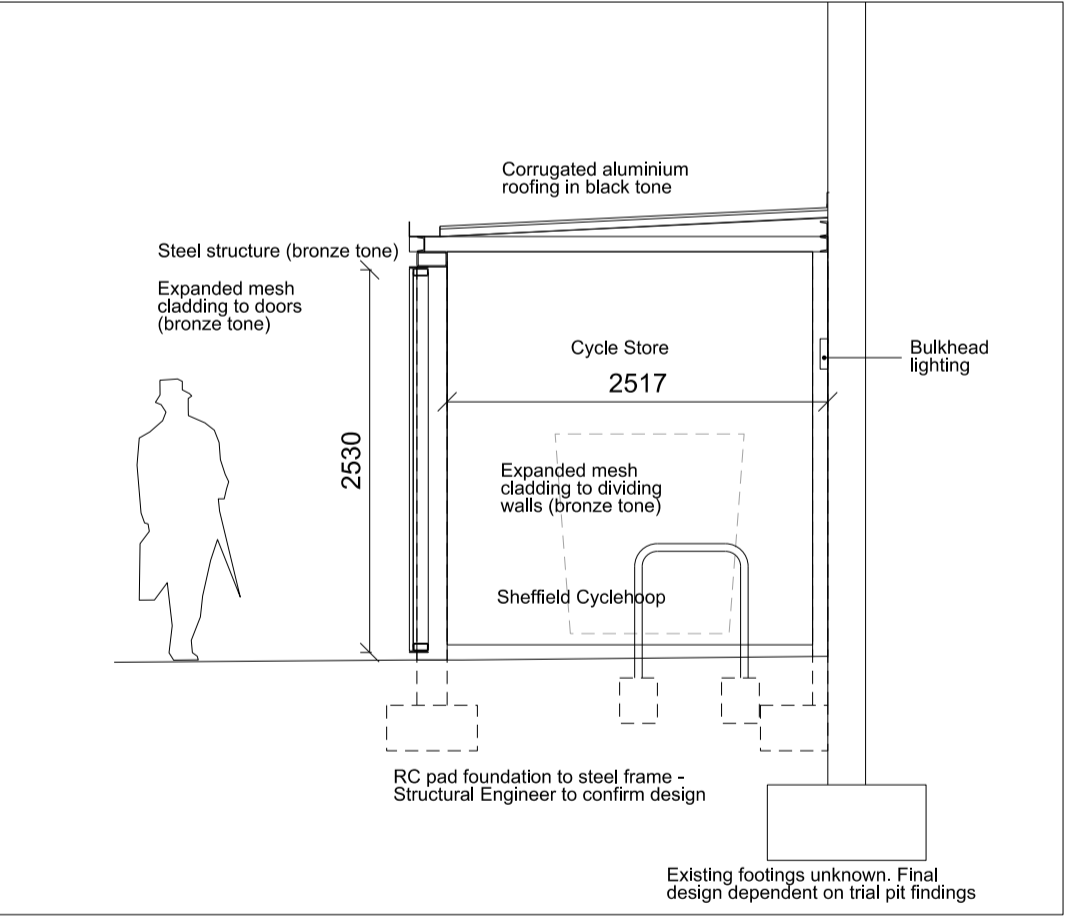
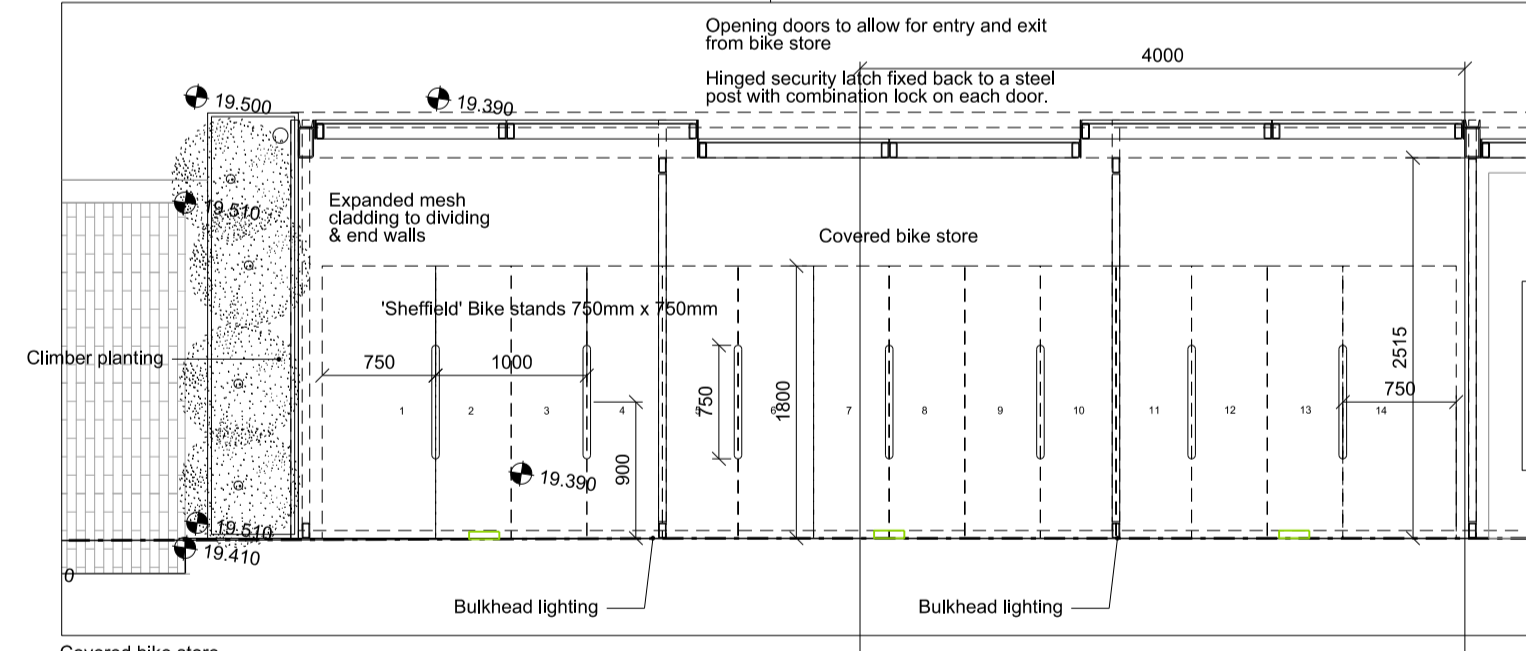
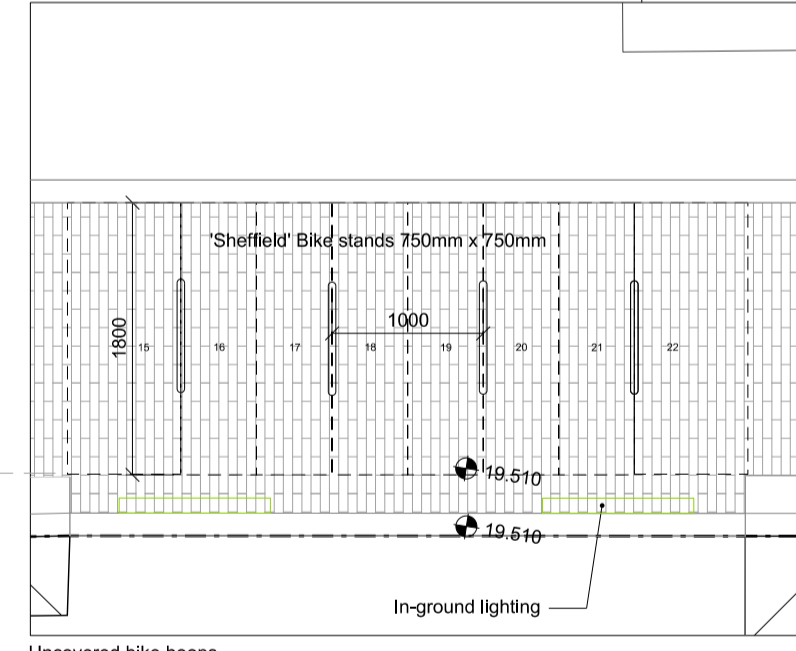
NOTES:  
Read in conjunction with 606-17001 & 17002 illustrating indicative planting, hard landscaping materials & external furniture.  
All existing Yorkstone to be carefully removed and stored to be restored and reused where possible.

PLANTING:  
Planting in freestanding planters (Refer to 606-17001 for more information on species):  
Small shrubs, grasses and ferns in freestanding planters will be selected from Hydrangea Annabelle, Pittosporum, Anemone Lessoniana, Liriope Muscari, Adiantum Aleuticum, Aster Frikanti Monch, Astragalus Gilli Richardson, Hellebores, and Astelia.  
Climbers in freestanding planters will be Trachelospermum jasminoides and Muehlenbeckia complexa.  
Small young trees grown in planters will be Robinia Pseudoacacia

CYCLE STORAGE:  
Cycle storage provision designed to Camden Planning Guidance CPG7 for cycle storage, relating to Core Strategy Policy CS11 Promoting sustainable and efficient travel and Development Policies DP17 Walking, cycling and public transport and DP19 Parking standards and limiting the availability of parking.  
22 Cycle spaces (11 hoops) are provided of which 14 are covered and secure, with 8 external for visitors/ short stays etc.

BREEAM: Maximum occupancy (exact number of staff unknown) worked out as 1 person/ 10sqm results in an occupancy of 184. Using a ratio of 1no. Cycle space for every 10 members of staff, this results in a total of 19 spaces (worst case scenario). As 50% of available T10 credits have been achieved, this number can be halved to 10 spaces.

REV	DATE	DESCRIPTION
P4	27.02.19	ISSUED FOR CAMDEN APPROVAL (CONDITION 6)
P3	29.03.18	ISSUED FOR SWH BREEAM REVIEW - REVISED AS CLOUDED
P2	26.03.18	ISSUED FOR SWH BREEAM REVIEW
P1	04.01.18	ISSUED FOR CAMDEN APPROVAL



## INFORMATION

<b>RICK MATHER ARCHITECTS ©</b>			
123 Camden High Street London NW1 7JR T: 020 7284 1721 F: 020 7287 7626 info@rickmather.com www.rickmather.com			
<b>THE HONOURABLE SOCIETY OF GRAY'S INN</b> 19-21 HIGH HOLBORN			
<b>PROPOSED LANDSCAPE PLAN</b>			
DRAWN	ME	SCALE	DATE
606	17000B	1:100	JAN 18
CHECKED	SC	SIZE	REV
		A3	P4
			27.02.19