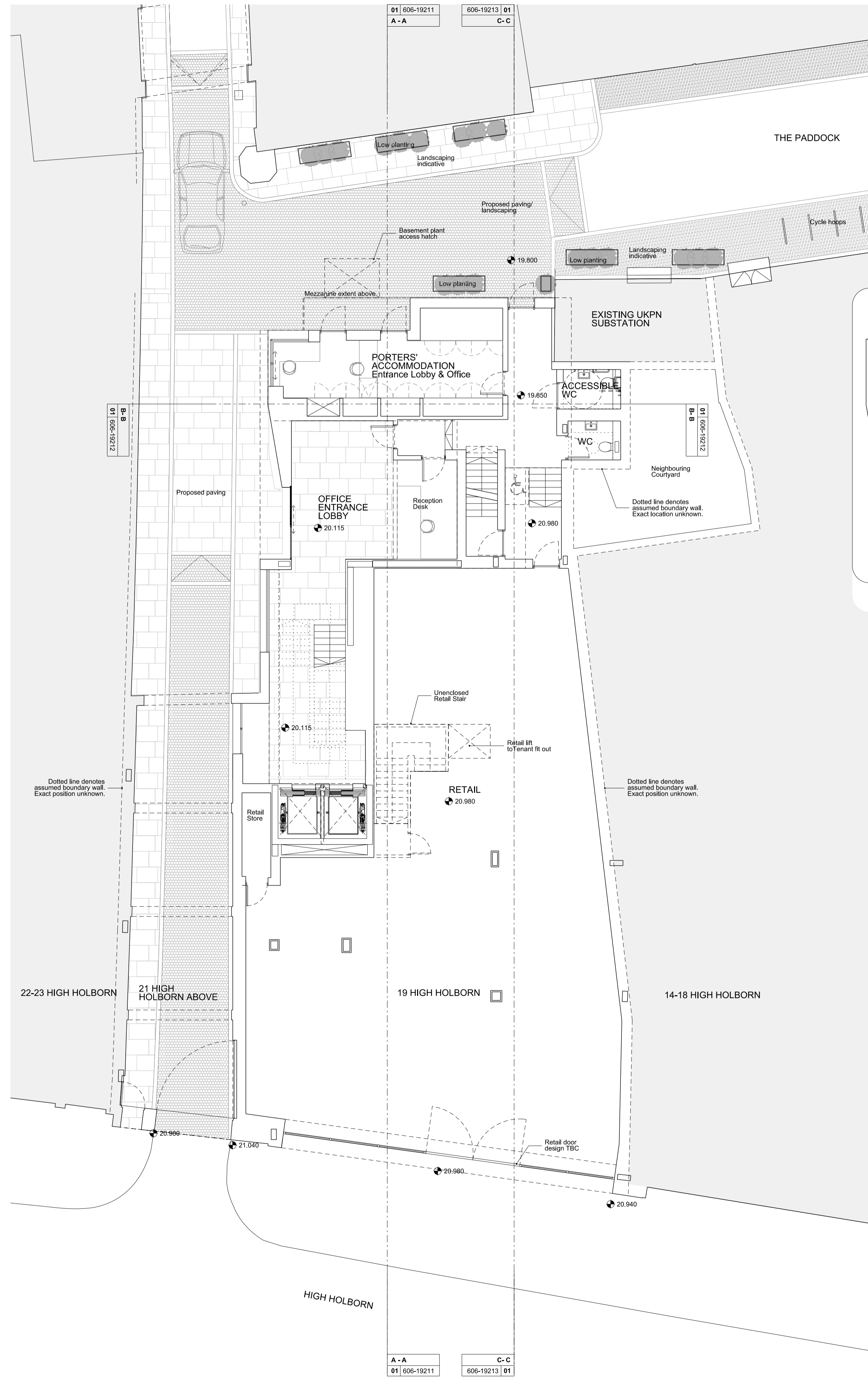


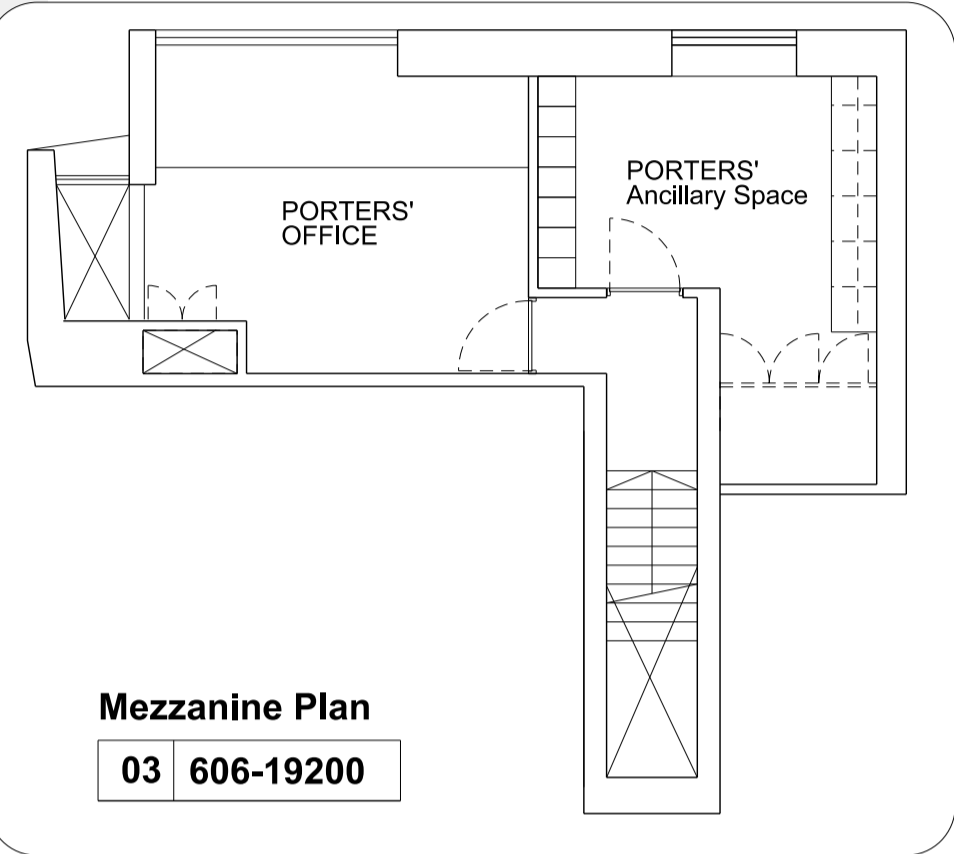
Basement Plan

01 606-19200



Ground Floor Plan

02 606-19200



Mezzanine Plan

03 606-19200

NOTES  
DO NOT SCALE FROM THIS DRAWING.  
CONTRACTOR TO CHECK ALL DIMENSIONS ON SITE.  
ANY DISCREPANCIES TO BE REPORTED TO THE ARCHITECT IMMEDIATELY.  
COPYRIGHT RICK MATHER ARCHITECTS LLP ©

SUMMARY OF AMENDMENTS:  
14-18 High Holborn:  
The proposed brick slip cladding has been replaced with render finish to UKPN substation & Ground Floor facade of 14-18 High Holborn upto line of proposed cycle enclosure. The render finish will match the render to High Holborn entrance archway.  
21 High Holborn:  
Introduction of stone keystone over High Holborn entrance archway.  
Keystone will be transcribed with treasurers initials & dates.  
Landscape:  
Updated to reflect general external landscape arrangement defined in Clearance of Condition 8 submission

REVISIONS	PL#	DATE	DESCRIPTION
PL3	27.02.19	NON-MATERIAL AMENDMENTS / LISTED BUILDING	
PL2	22.06.18	ISSUED FOR NON-MATERIAL AMENDMENTS	
PL1	25.11.16	ISSUED FOR PLANNING	
REV	DATE	DESCRIPTION	

KEY PLAN

STATUS

**PLANNING**

**RICK MATHER ARCHITECTS ©**

123 Camden High Street London NW1 7JR  
T: 020 7284 1727 F: 020 7287 7626  
info@rickmather.com www.rickmather.com

JOB

**THE HONOURABLE SOCIETY OF GRAY'S INN**  
19-21 HIGH HOLBORN

TITLE

**PROPOSED**  
GA FLOOR PLAN  
BASEMENT, GROUND FLOOR + MEZZANINE

DRAWN	ME	JOB #	DRG #	REV
		<b>606</b>	<b>19200</b>	<b>PL3</b>

CHECKED	TP	SCALE@A1	SCALE@A3	DATE	REV	DATE
		1:100	A1	NOV 16		27.02.19
		1:200	A3			