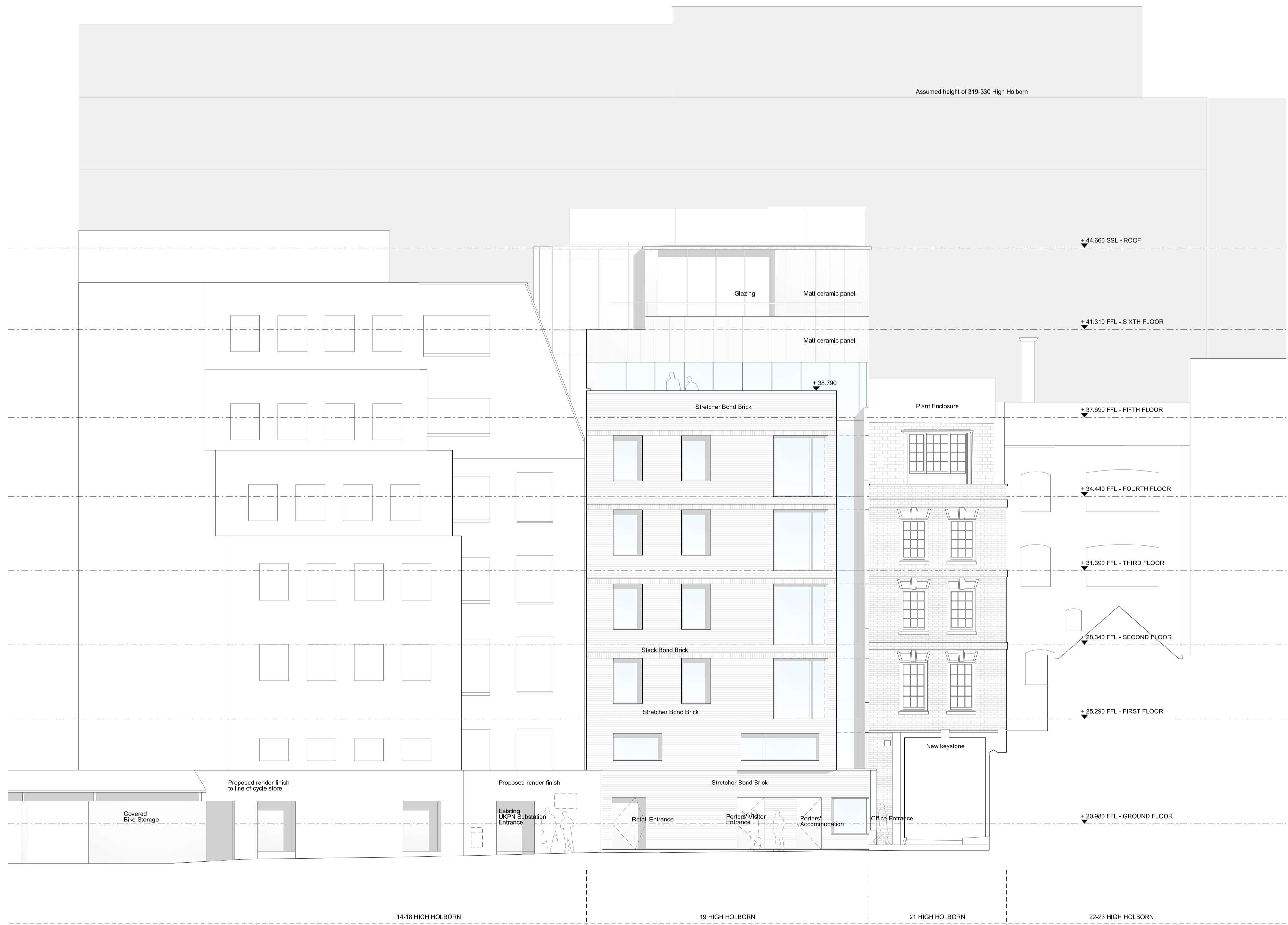


NOTES  
 DO NOT SCALE FROM THIS DRAWING.  
 CONTRACTOR TO CHECK ALL DIMENSIONS ON SITE.  
 ANY DISCREPANCIES TO BE REPORTED TO THE ARCHITECT IMMEDIATELY.  
 COPYRIGHT RICK MATHER ARCHITECTS LLP ©

SUMMARY OF AMENDMENTS:  
 14-18 High Holborn:  
 The proposed brick slip cladding has been replaced with render finish to UKPN substation & Ground Floor facade of 14-18 High Holborn upto line of proposed cycle enclosure. The render finish will match the render to High Holborn entrance archway.  
 21 High Holborn:  
 Introduction of stone keystone over High Holborn entrance archway.  
 Keystone will be transcribed with treasurers initials & dates.  
 Landscape:  
 Updated to reflect general external landscape arrangement defined in Clearance of Condition 8 submission



REVISIONS

REV	DATE	DESCRIPTION
PL3	27.02.19	NON-MATERIAL AMENDMENTS / LISTED BUILDING
PL2	22/06/18	ISSUED FOR NON-MATERIAL AMENDMENTS
PL1	28/11/16	ISSUED FOR PLANNING



STATUS  
**PLANNING**

**RICK MATHER ARCHITECTS ©**  
 123 Camden High Street London NW1 7JR  
 T: 020 7284 1727 F: 020 7287 7626  
 info@rickmather.com www.rickmather.com

JOB  
**THE HONOURABLE SOCIETY OF GRAY'S INN**  
 19-21 HIGH HOLBORN

TITLE  
**PROPOSED**  
 NORTH ELEVATION

DRAWN	ME	JOB #	606	DRG #	19223	REV	PL3
CHECKED	TP	SCALE@A1	1:100	SIZE	A1	DATE	NOV 16
		SCALE@A3	1:200	SIZE	A3	REV DATE	27.02.19

North Elevation  
 01 606-19223