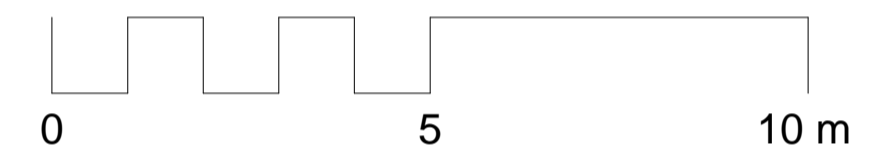
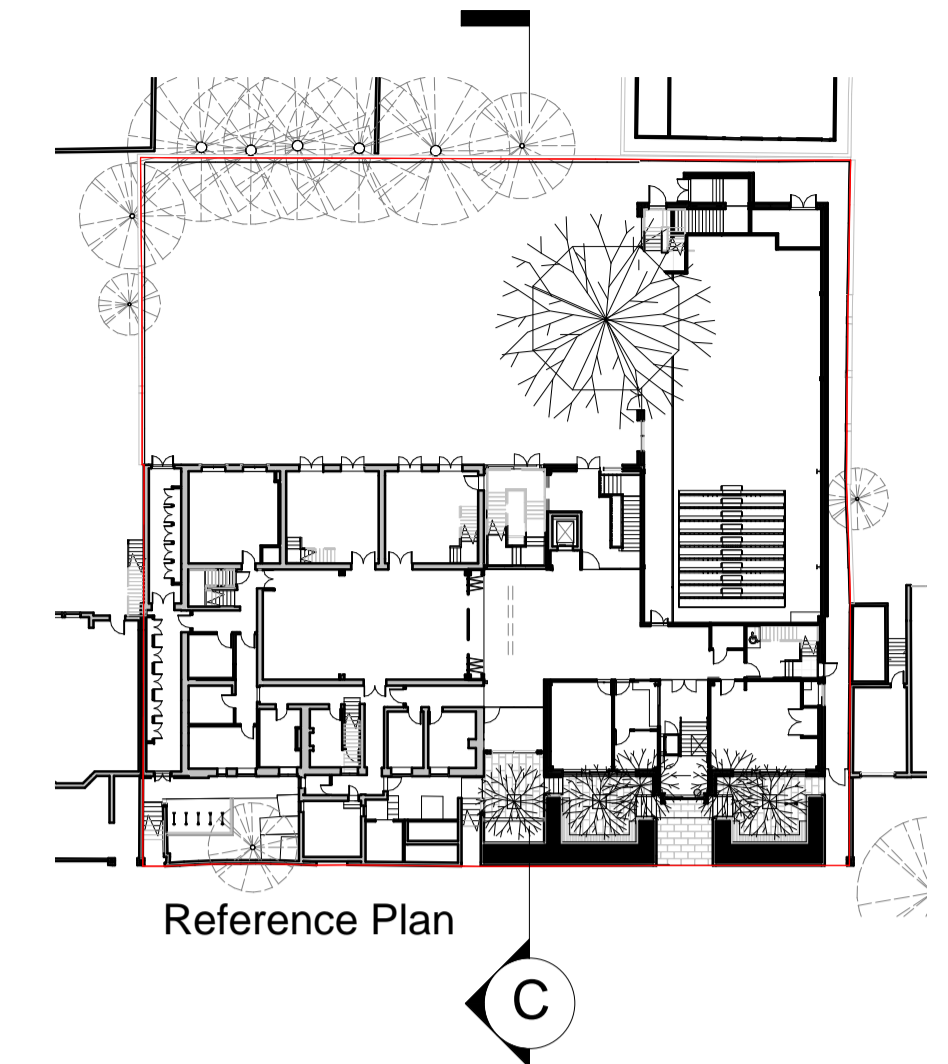




Proposed Section C
1 : 100



Notes

This drawing is subject to full verification by measured and structural survey, engineering design, confirmation of boundaries, easements and covenants.

This drawing is subject to full consultation with statutory bodies and associated consents.

The information is based upon OS information and topographical information supplied by third parties.

There is design development yet to take place that may affect reported areas and drawings. All drawings should be treated as approximate, therefore any decision to be made on the basis of these predictions, whether as to project viability, pre-letting, lease arrangements or the like should include allowances for possible increase or decrease inherent in the design development & construction process and should always be referred back to the legal ownership and land registry plans. All boundaries shown are 'or thereby' and are thus indicative only.

Rev	Date	Details	Drawn	Checked
C	04.03.19	PLANNING	CM	KSB
B	25.09.18	Reduced Scheme for Pre Application	CB	KSB
A	17.01.18	Graphical update to match proposals	JL	JL

Issued for:

PLANNING

Project/Client:	The Hall Senior School Hampstead London	Project No:	IALN14-0046
Dwg No:	P32-SC-13	Rev:	C
Scale:	As indicated @A1	Drawn By:	CB
Checked By:	KS	Date:	04.11.16



Tennyson House, 159-165 Great Portland Street, London, W1W 5PA
T: +44 (0)207 5800 400
www.norr.com