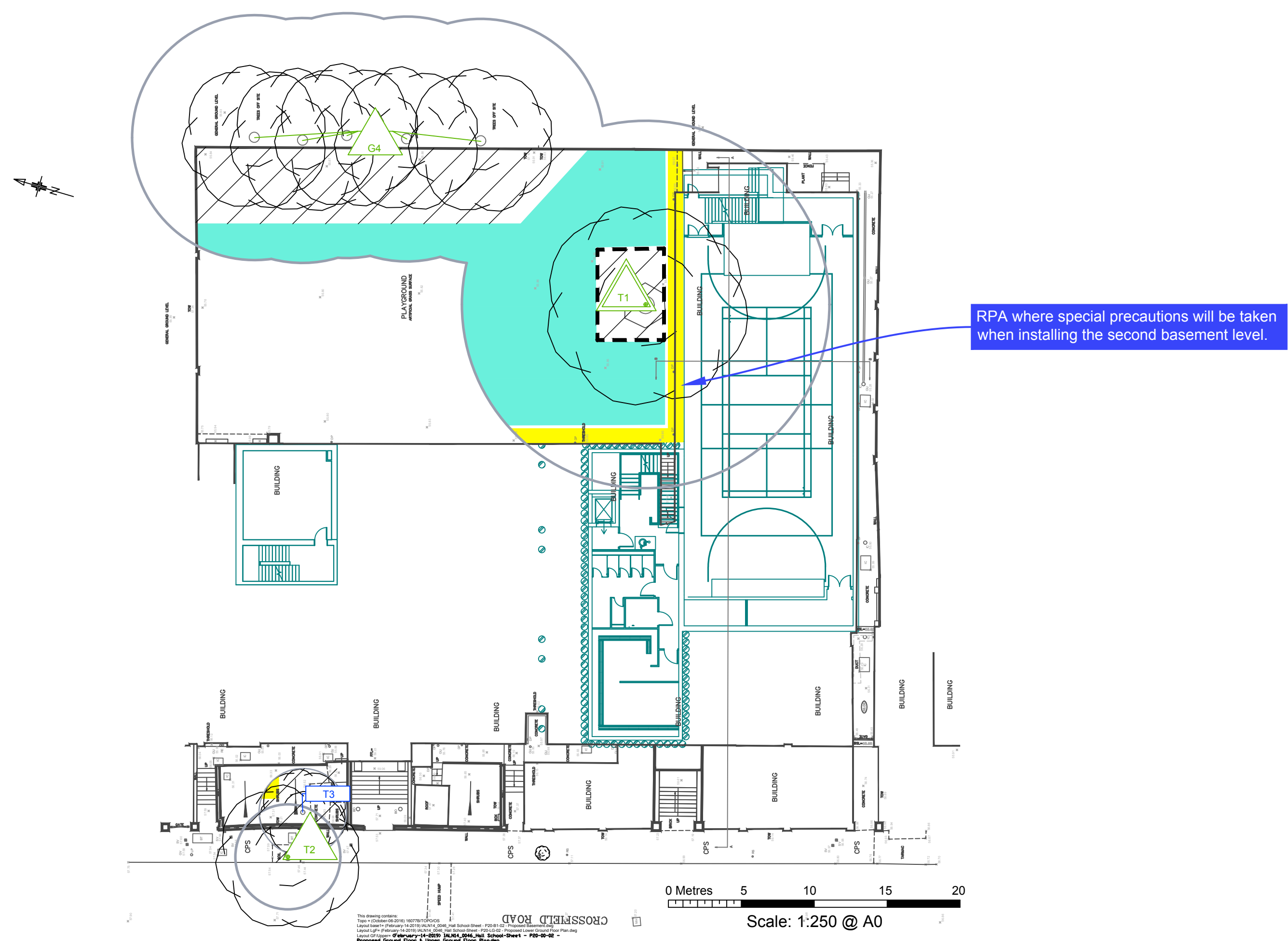


Basement



Draft sequence

Hall School

Basement Draft Construction Sequence

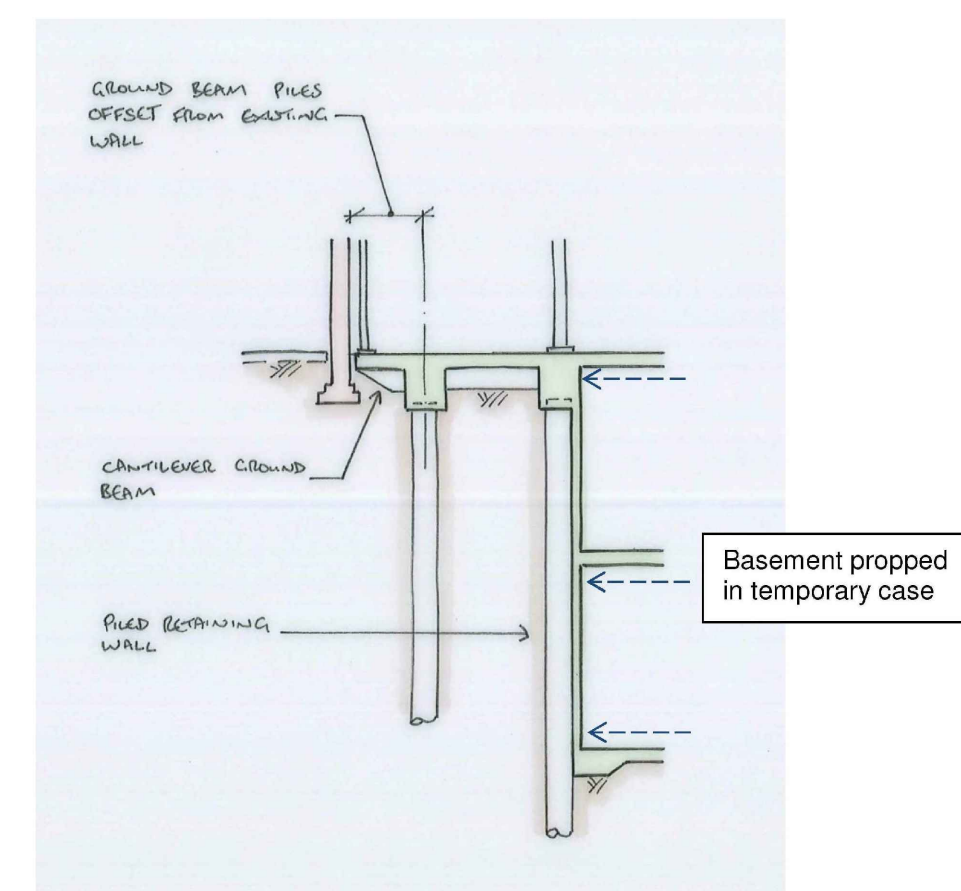


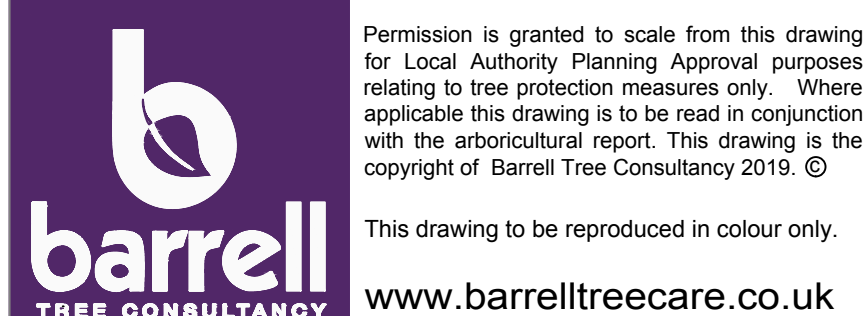
Fig.1: Contiguous piled wall construction

Sequence

1. Install piles
2. Install capping beam
3. Prop at high level
4. Dig down to mid-level
5. Prop at mid-level
6. Dig down to low level
7. Prop at low level
8. Dig down to formation level
9. Install all basement slabs and walls from lowest level up, removing propping after concrete has cured.

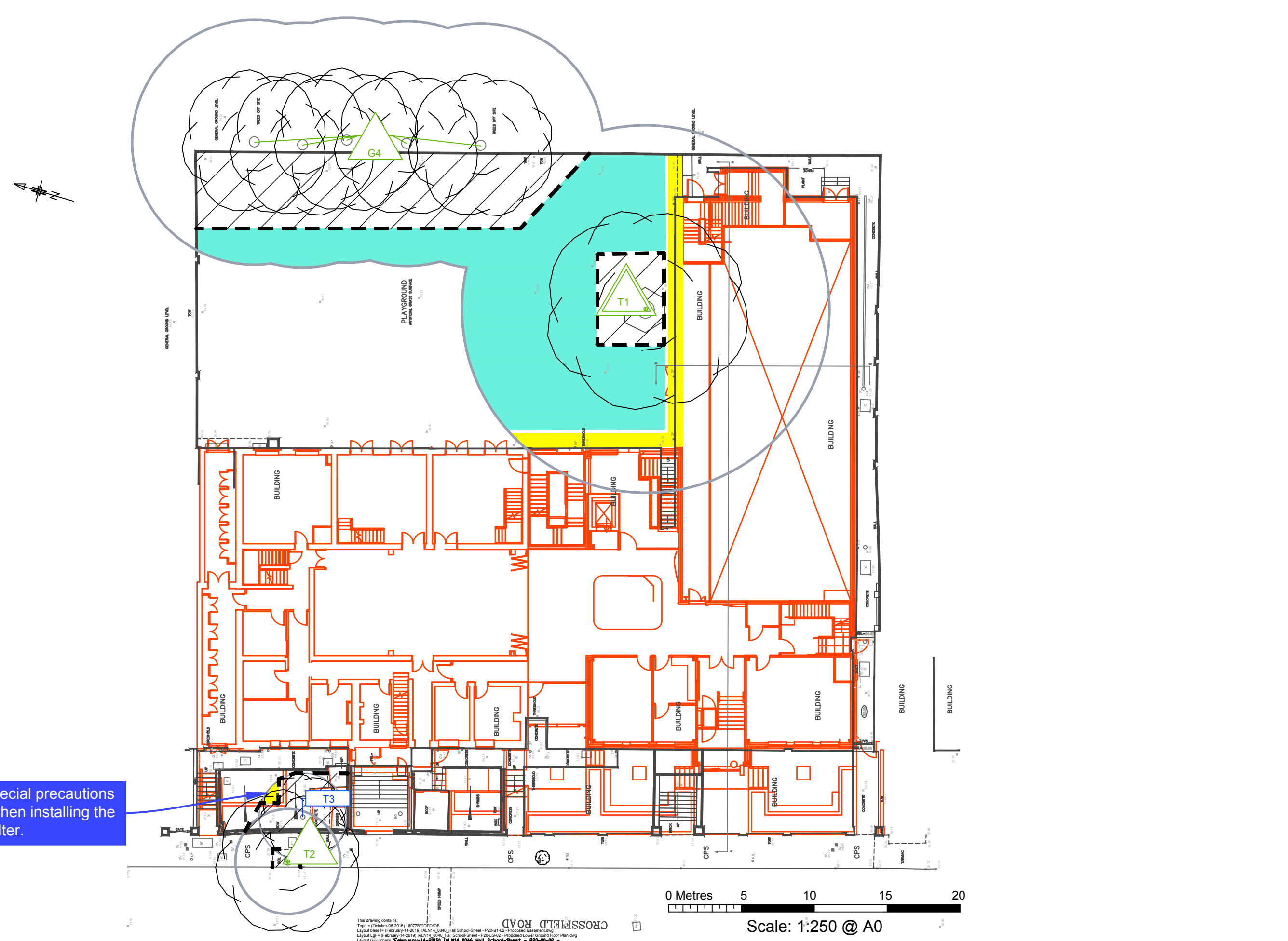
Barrel Plan Ref: 15204-BT2

Provided Plan Refs: 160778/TOPO/OS: IALN14_0046_Hall School-Sheet - P20-B1-02 - Proposed Basement.dwg, IALN14_0046_Hall School-Sheet - P20-LG-02 - Proposed Lower Ground Floor Plan.dwg & IALN14_0046_Hall School-Sheet - P20-UG-02 - Proposed Ground Floor & Upper Ground Floor Plan.dwg



- BS category A Trees of high quality
- BS category B Trees of moderate quality
- BS category C Trees of low quality
- Proposed Basement
- Proposed Lower ground
- Proposed Ground floor
- Construction exclusion zone (CEZ) to be protected by fencing
- Precautionary Areas
- RPA where the existing playground which can be utilised for the storage of construction materials, machinery and site facilities
- Root protection area (RPA) boundaries for category A and B trees
- Root protection area (RPA) boundary for category C tree

Lower Ground Floor



Draft sequence

Hall School

Basement Draft Construction Sequence

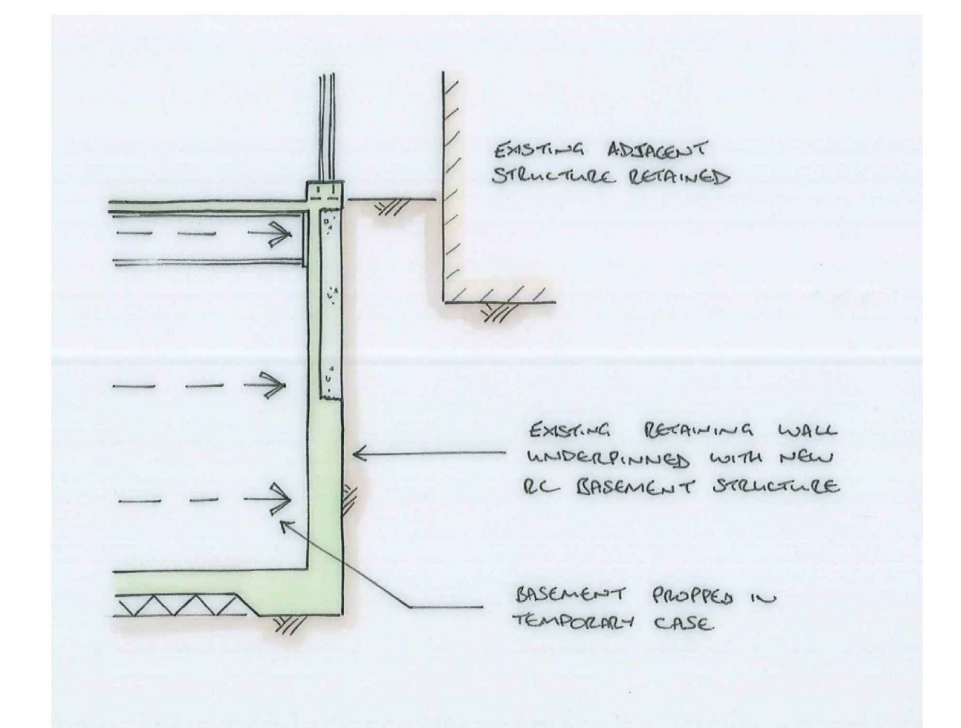
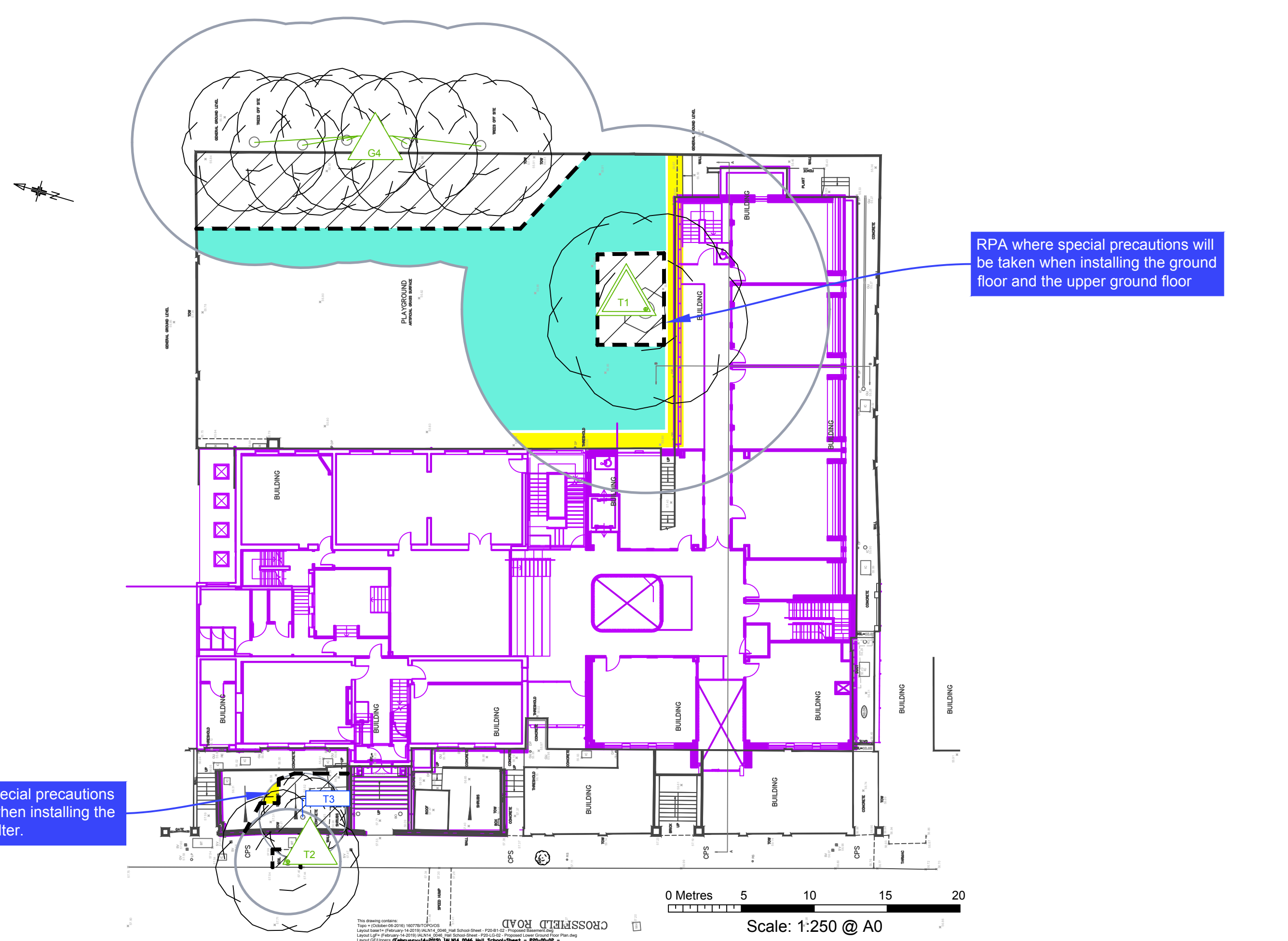


Fig.2: Proposed underpinning construction

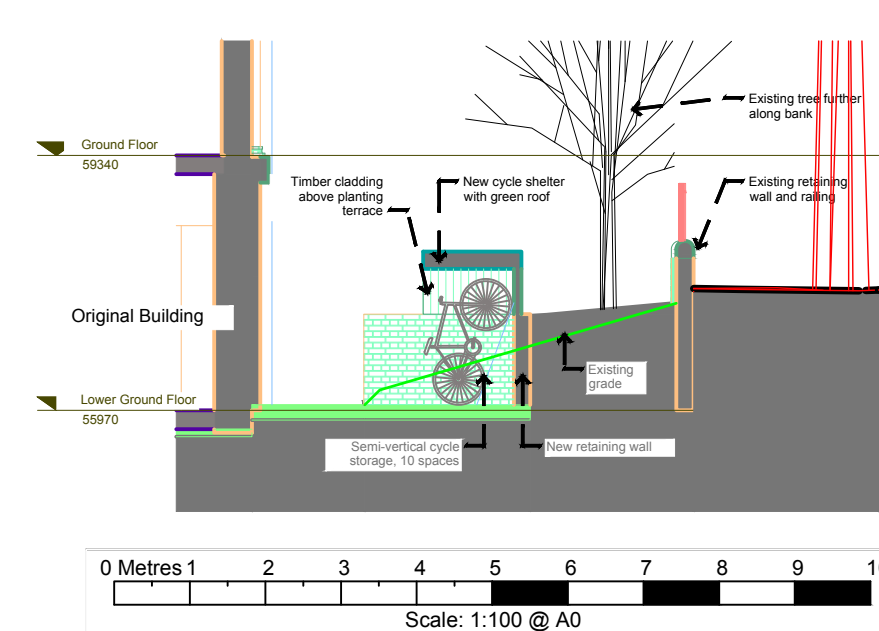
Sequence

1. Install props at high and mid-level
2. Dig down to low level
3. Prop at low-level
4. Dig down to formations level
5. Cast all basement slabs and retaining walls, from lowest level up.

Ground Floor and Upper Ground Floor



Cycle shelter section



SGN 1 Monitoring tree protection



Always:

- have a pre-commencement meeting with the tree consultant before development starts
- use the tree consultant to regularly check that protection remains fit for purpose
- use the tree consultant to supervise work in RPAs
- keep a written record of supervision



SGN 2 Fencing protected trees



Always:

- install protection before development starts
- make sure protection is fit for purpose, i.e. it prevents damage to trees and soil
- keep protection in place until there is no risk to trees
- get written permission to move or remove any protection

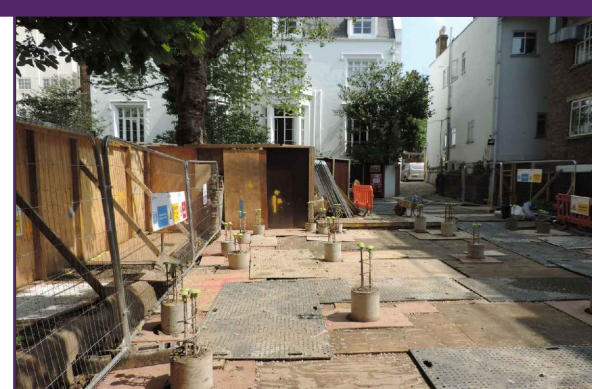


SGN 3 Ground protection



Always:

- install protection before development starts
- make sure protection is fit for purpose, i.e. it prevents damage to trees and soil
- keep protection in place until there is no risk to trees
- get written permission to move or remove any protection

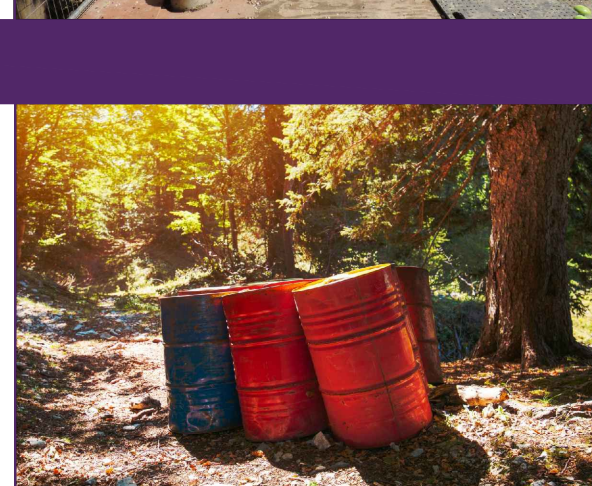


SGN 4 Pollution control



Always:

- keep toxic products away from RPAs

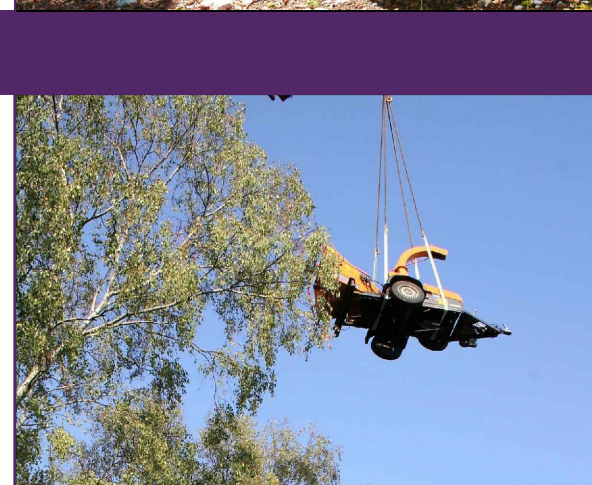


SGN 5 Site cranes & piling rigs



Always:

- use the tree consultant to supervise work with cranes and piling rigs in RPAs

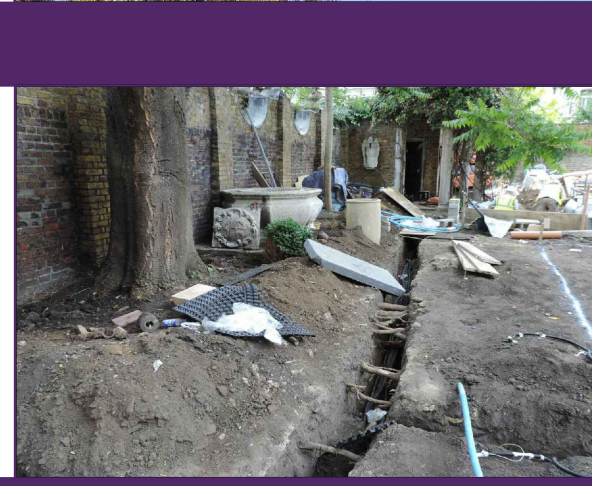


SGN 7 Excavating in RPAs



Always:

- use the tree consultant to supervise work in RPAs
- use hand tools to dig in RPAs
- protect exposed roots from sunlight and drying out

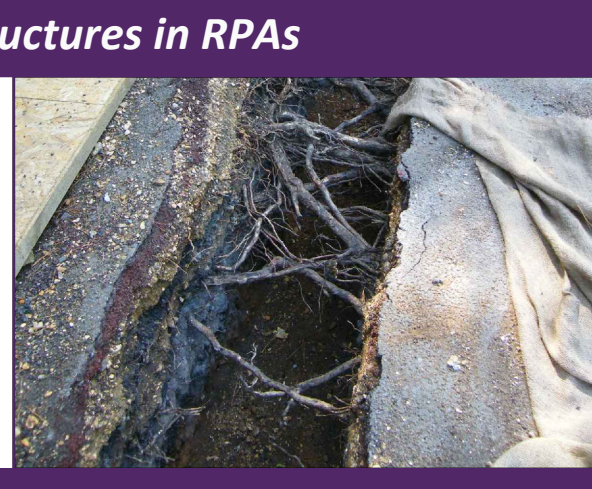


SGN 8 Removing surfacing and structures in RPAs



Always:

- have a pre-commencement meeting with the tree consultant before development starts
- use the tree consultant to supervise work in RPAs
- minimise damage to roots and disturbance to soil in RPAs

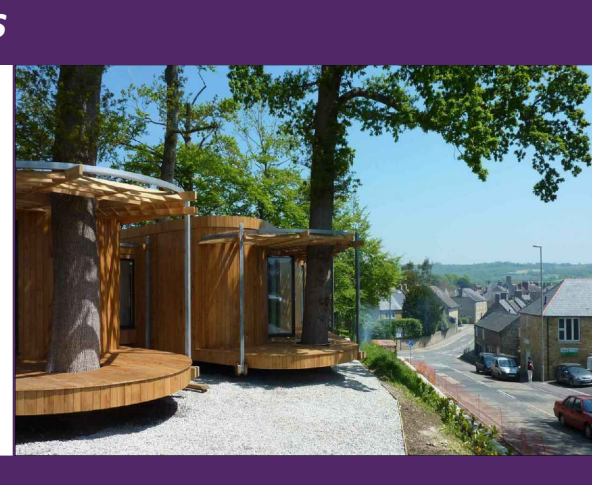


SGN 10 Installing structures in RPAs



Always:

- use the tree consultant to supervise work in RPAs
- hand-dig pile, pad, or post locations down to at least 60cm
- protect RPAs from contamination from poured wet concrete



SGN 11 Installing services in RPAs



Always:

- use the tree consultant to supervise work in RPAs
- select the least damaging option when installing services, so prioritise trenchless, over broken trench over continuous trench
- hand-dig trenches if trenchless is not feasible



How to use plan

More detailed guidance on each Site Guidance Note (SGN) can be found in a printed hard copy compilation of all the SGNs, issued to the Site Manager at the pre-commencement site meeting (Note: This should be retained on site throughout the duration of works). Additionally, an electronic pdf compilation of all the SGNs, was submitted with this drawing to the local planning authority and the client. Alternatively, a pdf of each SGN can be downloaded by:

1. clicking the image links in the electronic pdf version of this plan;
2. holding a mobile phone QR (Quick Response) code reader over the QR code in the paper version of this plan, or,
3. visiting our website at <https://www.barrelltreecare.co.uk/resources/technical-guidance>

Tree schedule				
Tree No	Species	Category	RPA Radius	Tree Works
Retained trees				
T1	London plane	A	12.6	Carry out safety check and lift over site to 3-4m as necessary. Cut back to old pollard points. Reduce one primary limb growing over the existing building.
T2	Norway maple	B	3.6	
T3	Beech	C	3	
G4	Sycamore, poplar, London plane, cypress	B	8.4	