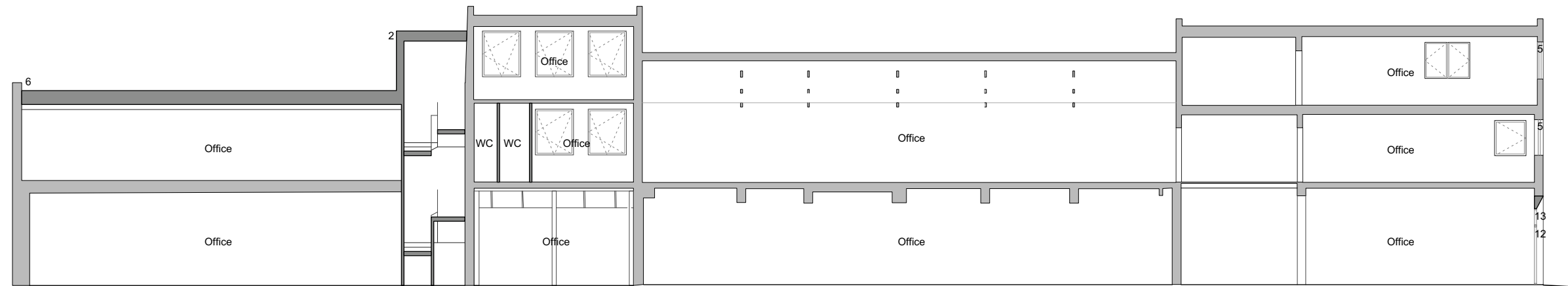
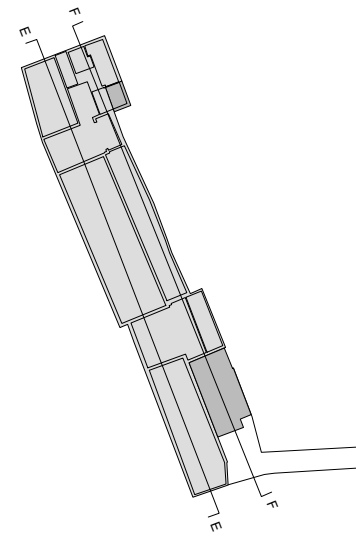
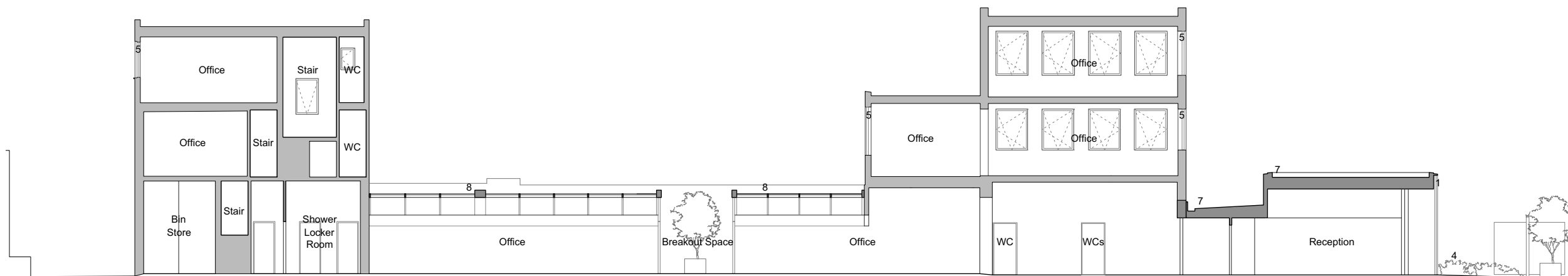


KEY

1. Curtain wall
2. Black EPDM rubber
3. Aluminium panel frame with PPC signage
4. Green wall
5. Split frame wood/aluminium window, PPC finish RAL 9004 Signal Black
6. Insulated panel roof system, finish RAL 9004 Signal Black
7. Insulated roof system, finish black EPDM rubber
8. Modular system rooflights
9. White painted brick
10. Black painted brick
11. Anodized aluminium panel with access door to refuse and cycle store and PPC signage
12. Floor to ceiling height window
13. Top light window
14. New access gate with separate pedestrian entrance, PPC signage and retained existing frame



1 Section EE



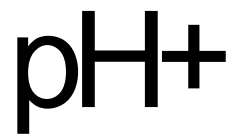
2 Section FF



Copyright pH+
 No implied licence exists. This drawing should not be used to calculate areas for the purpose of valuation. Do not scale this drawing. All dimensions to be checked on site by the contractor and such dimensions to be their responsibility. All work must comply with relevant British Standards and Building Regulations requirements. Drawing errors and omissions to be reported to the architect.

Revisions			
Rev. By	Date	Description	
/	LLG 14/03/19	Planning Issue	

KEY
 Existing Building
 Proposed



Puncher Hamilton Plus Ltd

Albion Mills, 3rd Floor
 18 East Tenter Street
 London E1 8DN

t : +44 (0)20 7613 1965
 e : mail@phplusarchitects.com
 w : www.phplusarchitects.com

Project Title
 Symes Works
Project Address
 15a - 37 Camden High Street
 London NW1 7JE

Drawing Name
 Proposed
 Sections EE - FF

Status
Planning
 Scale
 A3 1:200
 A1

Proj. No. Area Dwg. No. Type Rev
861 - X - 0301 - GA - /