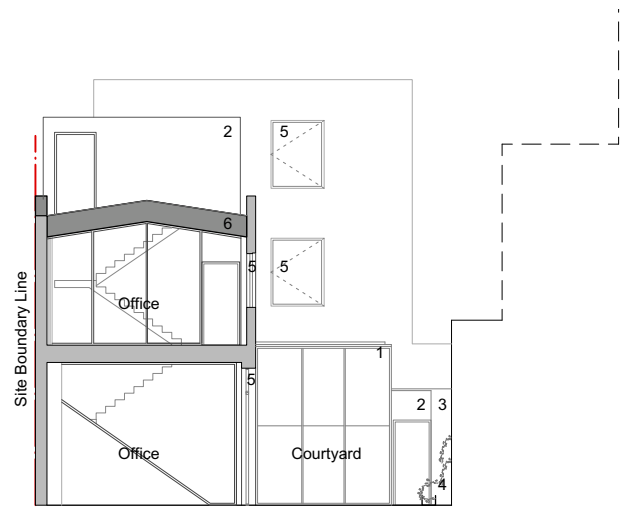
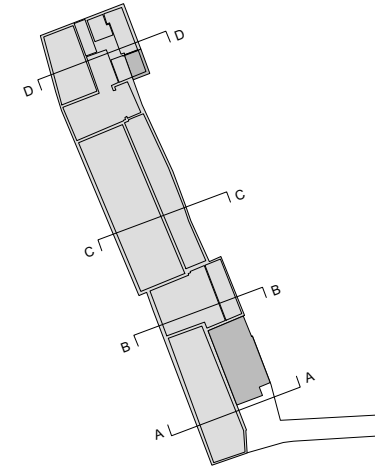
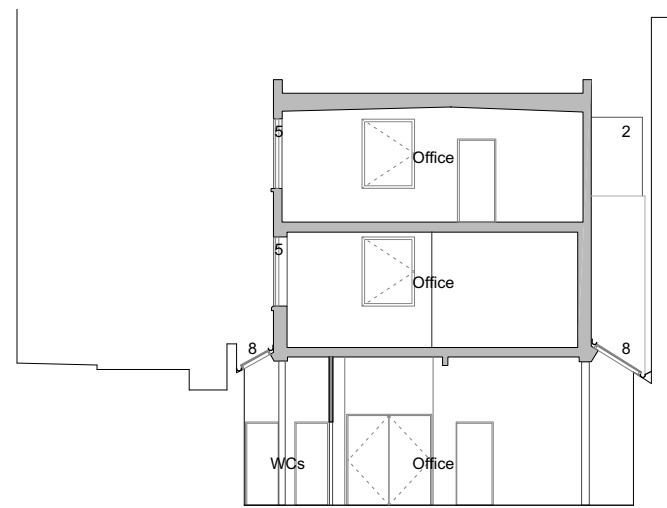


**KEY**

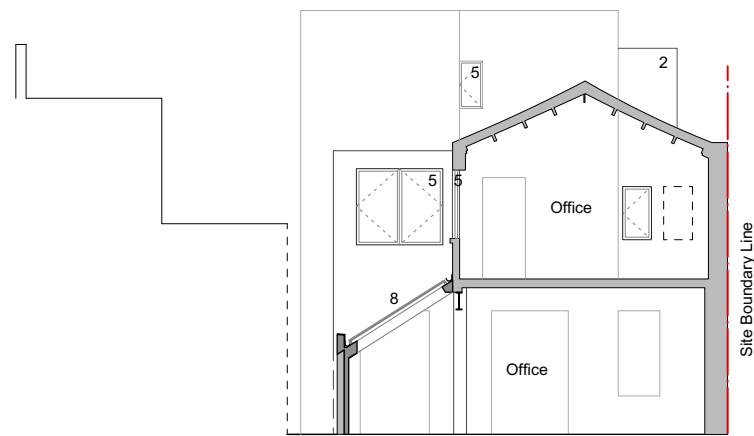
1. Curtain wall
2. Black EPDM rubber
3. Aluminium panel frame with PPC signage
4. Green wall
5. Split frame wood/aluminium window, PPC finish RAL 9004 Signal Black
6. Insulated panel roof system, finish RAL 9004 Signal Black
7. Insulated roof system, finish black EPDM rubber
8. Modular system rooflights
9. White painted brick
10. Black painted brick
11. Anodized aluminium panel with access door to refuse and cycle store and PPC signage
12. Floor to ceiling height window
13. Top light window
14. New access gate with separate pedestrian entrance, PPC signage and retained existing frame



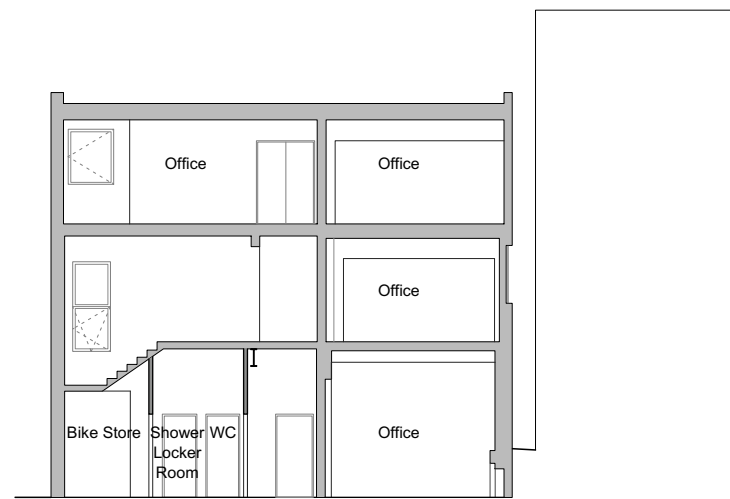
1 Section AA



2 Section BB



3 Section CC



4 Section DD

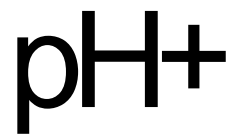


**Copyright pH+**  
 No implied licence exists. This drawing should not be used to calculate areas for the purpose of valuation. Do not scale this drawing. All dimensions to be checked on site by the contractor and such dimensions to be their responsibility. All work must comply with relevant British Standards and Building Regulations requirements. Drawing errors and omissions to be reported to the architect.

Revisions			
Rev.	By	Date	Description
/	LLG	14/03/19	Planning Issue

KEY

	Existing Building
	Proposed



**Puncher Hamilton Plus Ltd**

Albion Mills, 3rd Floor  
 18 East Tenter Street  
 London E1 8DN

t : +44 (0)20 7613 1965  
 e : mail@phplusarchitects.com  
 w : www.phplusarchitects.com

**Project Title**  
 Symes Works  
**Project Address**  
 15a - 37 Camden High Street  
 London NW1 7JE

**Drawing Name**  
 Proposed  
 Sections AA - BB - CC - DD

Status	Scale
Planning	A3 1:200 A1

Proj. No.	Area	Dwg. No.	Type	Rev
861	- X	- 0300 - GA	-	/