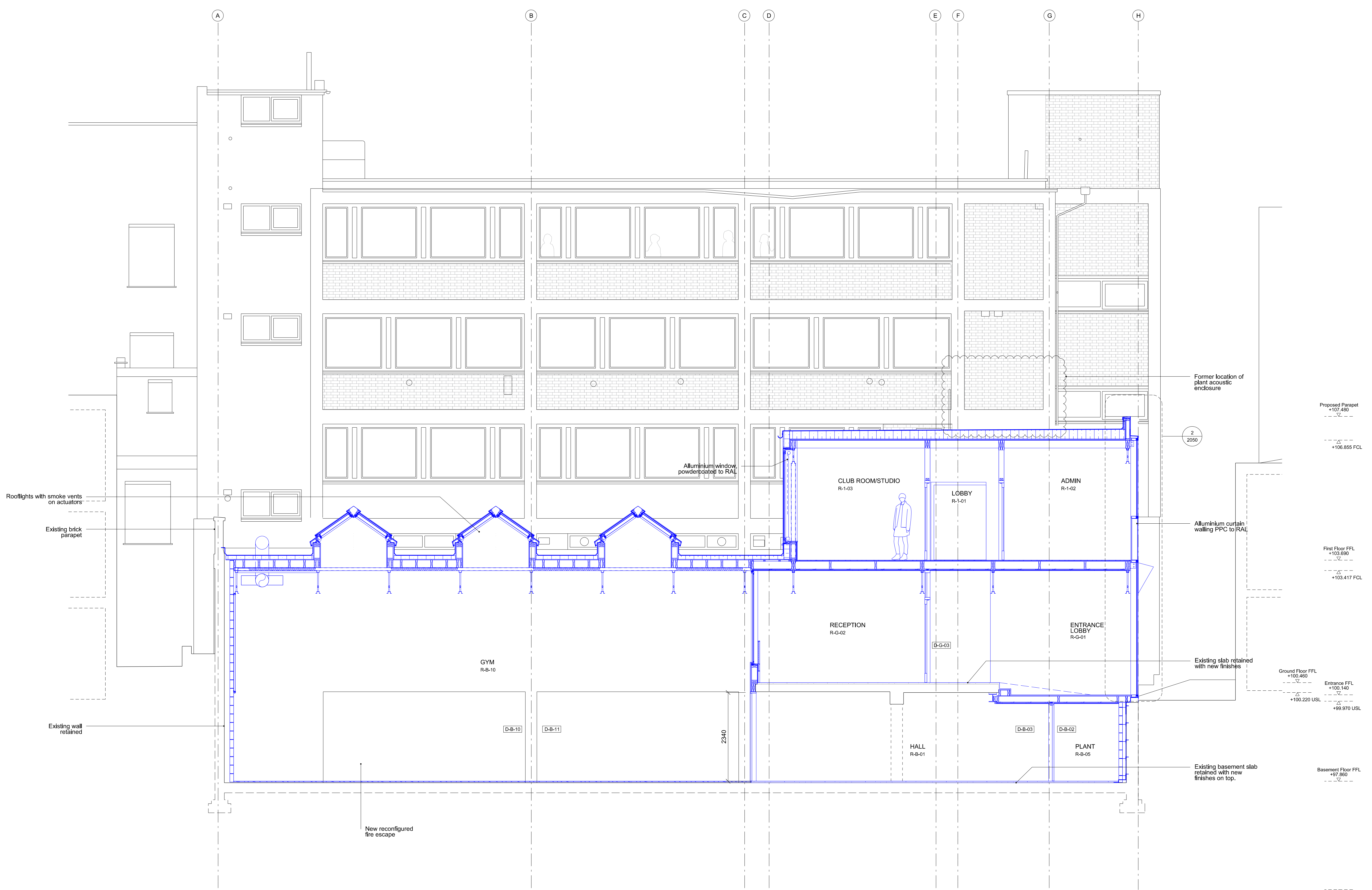


NOTES:

— EXISTING
 — PROPOSED



Former location of plant acoustic enclosure

Proposed Parapet +107.480

2 2050

+106.855 FCL

Aluminium curtain walling PPC to RAL

First Floor FFL +103.690

+103.417 FCL

Existing slab retained with new finishes

Ground Floor FFL +100.460

Entrance FFL +100.140

+100.220 USL

+99.870 USL

Existing basement slab retained with new finishes on top.

Basement Floor FFL +97.860

+96.00 DATUM



Rev	Date	Description
P2	29.3.19	Planning
P1	10.1.19	Planning

Ga Architects
 Rapier House
 40 Lambs Conduit Street
 London WC1N 3LJ
 t +44(0)20 7242 5422
 f +44(0)20 7242 3646
 post@ga.co.uk
 www.ga.co.uk

PROJECT: Bedford House

JOB: 255

TITLE: Proposed Section B

STATUS: Planning

DATE: 29.3.2019 SCALE: 1:50(A1)
 1:100(A3)

REV: P2 NUMBER: 1601

DO NOT SCALE FROM THIS DRAWING. ALL DIMENSIONS ARE TO BE CHECKED ON SITE. THIS DRAWING IS TO BE READ IN CONJUNCTION WITH ALL CONSULTANTS INFORMATION

DRAWN: RC INSPECTED: SI