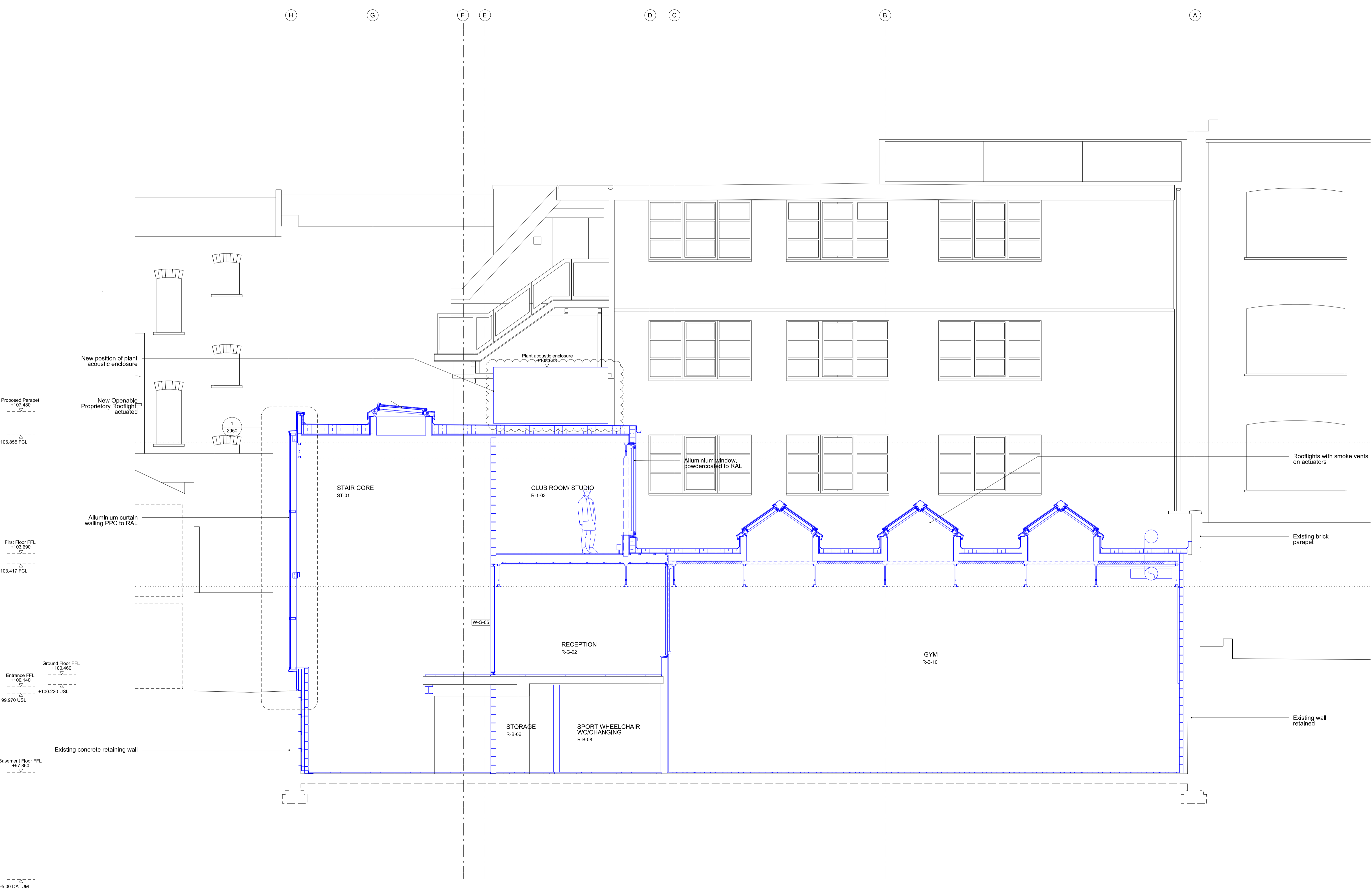


NOTES:

— EXISTING
 — PROPOSED



Proposed Parapet
 +107.480

New position of plant acoustic enclosure

New Openable Proprietary Rooflight actuated

+106.855 FCL

2050

Aluminium curtain walling PPC to RAL

First Floor FFL
 +103.650

+103.417 FCL

Ground Floor FFL
 +100.460

Entrance FFL
 +100.140

+100.220 USL

+99.970 USL

Existing concrete retaining wall

+95.00 DATUM

Rev	Date	Description
P2	29.3.19	Planning
P1	10.1.19	Planning

6a Architects
 Rapier House
 40 Lambs Conduit Street
 London WC1N 3LJ
 t +44(0)20 7242 5422
 f +44(0)20 7242 3646
 post@6a.co.uk
 www.6a.co.uk

PROJECT: Bedford House

JOB: 255

TITLE: Proposed Section A

STATUS: Planning

DATE: 29.3.2019 SCALE: 1:50(A1)
 1:100(A3)

REV: P2 NUMBER: 1600

DO NOT SCALE FROM THIS DRAWING. ALL DIMENSIONS ARE TO BE CHECKED ON SITE. THIS DRAWING IS TO BE READ IN CONJUNCTION WITH ALL CONSULTANTS INFORMATION

DRAWN: TR INSPECTED: SI