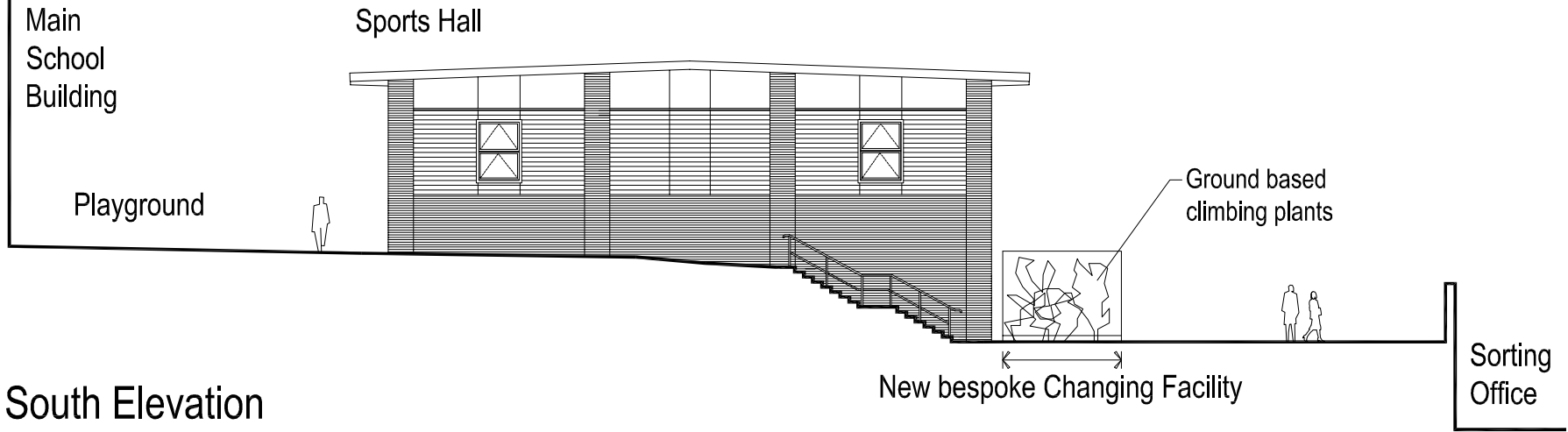
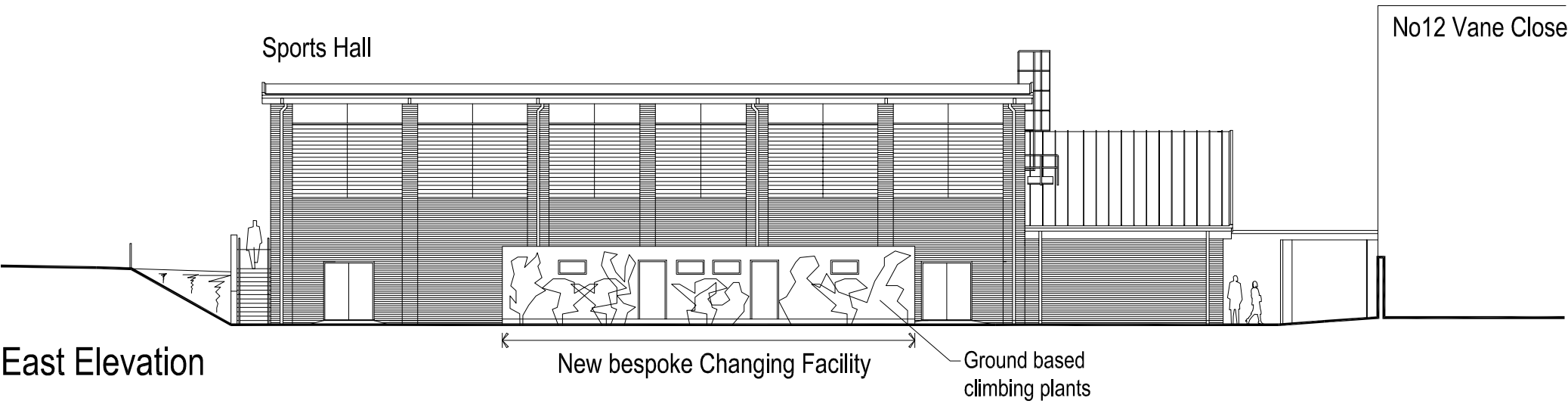


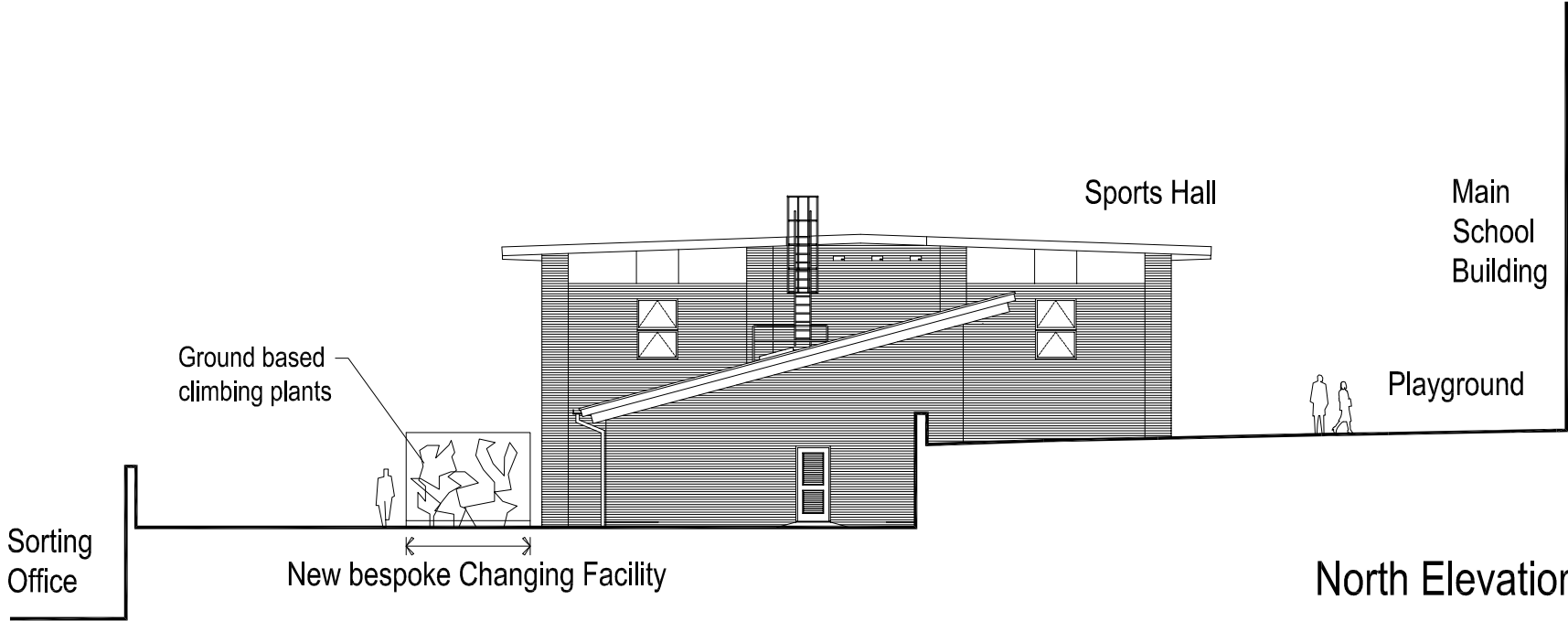
NOTES
Copyright: All rights reserved.
This drawing must not be reproduced without permission.
This drawing must not be scaled. Dimensions are in millimetres unless specified.



South Elevation



East Elevation



North Elevation

New Bespoke Modular Changing Facility

Single secure 48x12 feet (14.6x3.7m) prefabricated bespoke modular changing facility that includes two changing rooms, showers and WC provision, accommodating a total of 50 pupils.

New, purpose built unit of the highest quality. Dark green colour, surrounded on three sides by ground based climbing plants.

Climbing Plants

Minimum 600mm wide planting bed with a depth of 450mm topsoil. On completion of planting spread a 75mm layer of medium grade bark mulch.

Climbing plants to be planted at 900mm centres attached to frame (horizontal wires at 450mm spacing and vertical at 900mm).

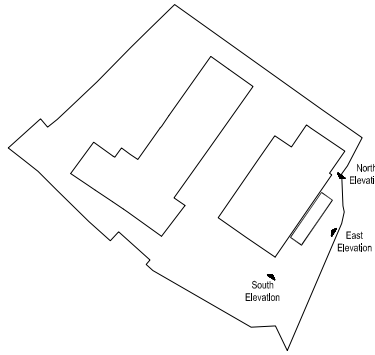
Species:

- East & North facing elevations - a mix of Hedera helix Hibernica 50%, Parthenocissus henryana, 25% & Hydrangea petiolaris, 25% - 3 litre pot size
- South facing elevation: - Jasminium nudiflorum - 3 litre pot size

Interplant with ground cover plants at 600mm centres - Geranium 'Wargrave Pink', Bergenia 'Sillberlicht', Euonymus Silver Queen, Liriope Muscari, - 3 Litre pot size

Maintenance:

- Tie climbers into trellis as required
- Water as necessary
- Keep planting bed weed free
- Pruning climbers as follows:
 - Hedera & Parthenocissus - No regular pruning needed. However trimming may be required to keep them to the space available, removing as much from the longer shoots as necessary
 - Jasminium nudiflorum prune in spring immediately after flowering, cut back flowered stems to a strong side shoot lower down; thin out crowded, crossing or misplaced branches and remove weak or thin stems. Will tolerate hard pruning and renovation as required, cut back hard to within 60cm (2ft) of the base
 - Hydrangea petiolaris - No regular pruning needed. However trimming may be required to keep them to the space available, removing as much from the longer shoots as necessary. Trim after flowering



m 0 1 2 3 4 5 6 7 8 9 10
SCALE 1:100

REV	DATE	REVISION NOTE	BY	CHECK

--

elliswilliams
ARCHITECTS

North Bridge House Senior School, Hampstead
Elevations - Proposed / Changing Facilities
2432_AP(0-0)05
STATUS | PLANNING
DRAWN BY | EWA
SCALE | 1:100 @ A1
DATE | April 2019
REV

2nd Floor 131 Shoreditch High Street London E1 6JE
T: +44 (0)20 7841 7200 E: info@ewa.co.uk