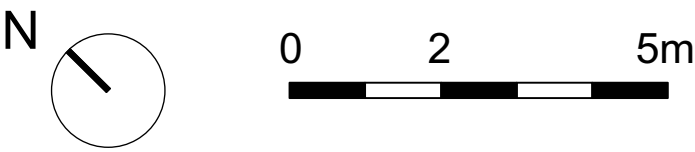


No.	Revision.	Date.



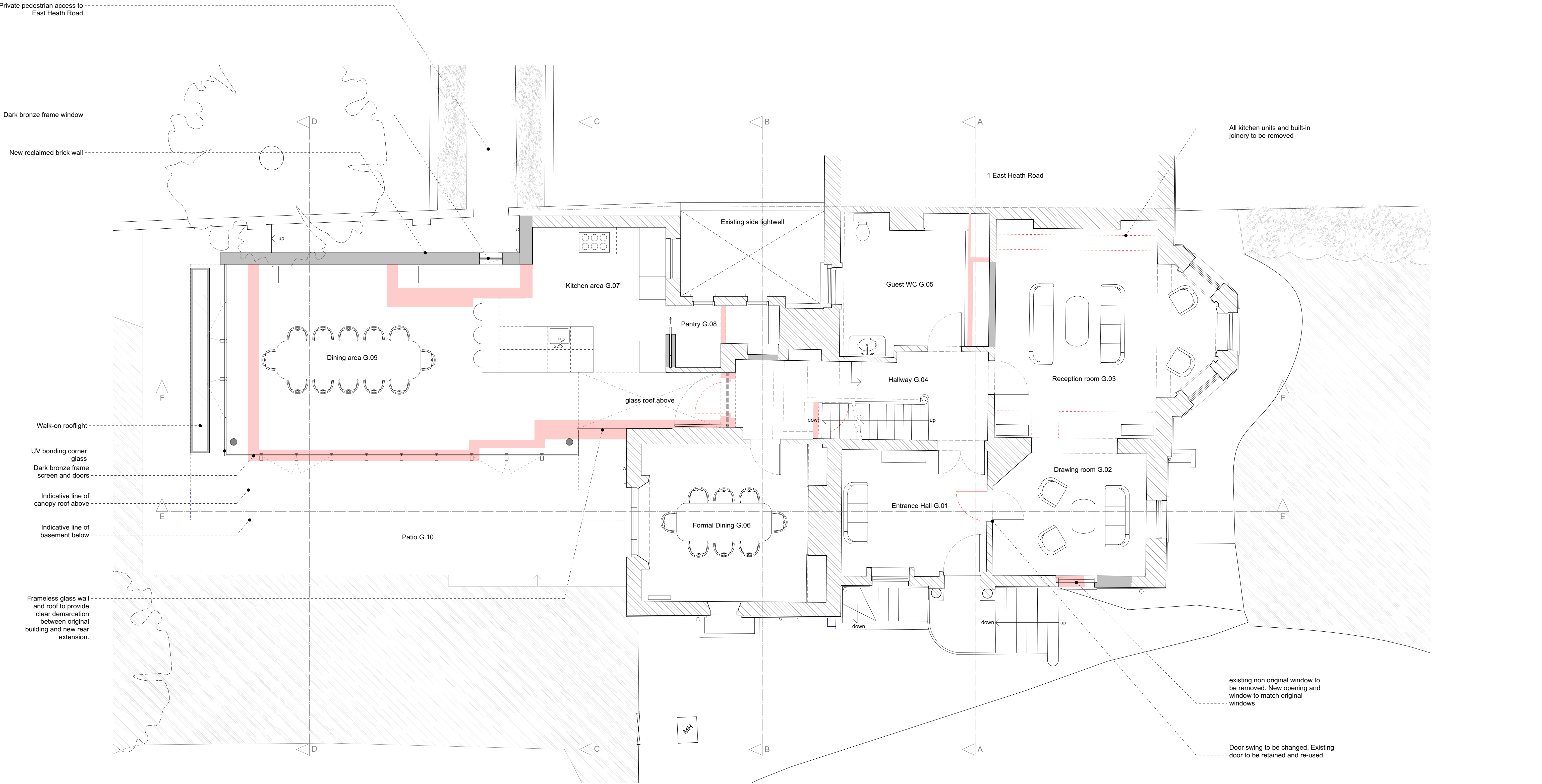
PLANNING ISSUE

All dimensions must be confirmed on site and verified with the Architect. Any discrepancies on the drawing must be reported to the Architect prior to any works being carried out on site.

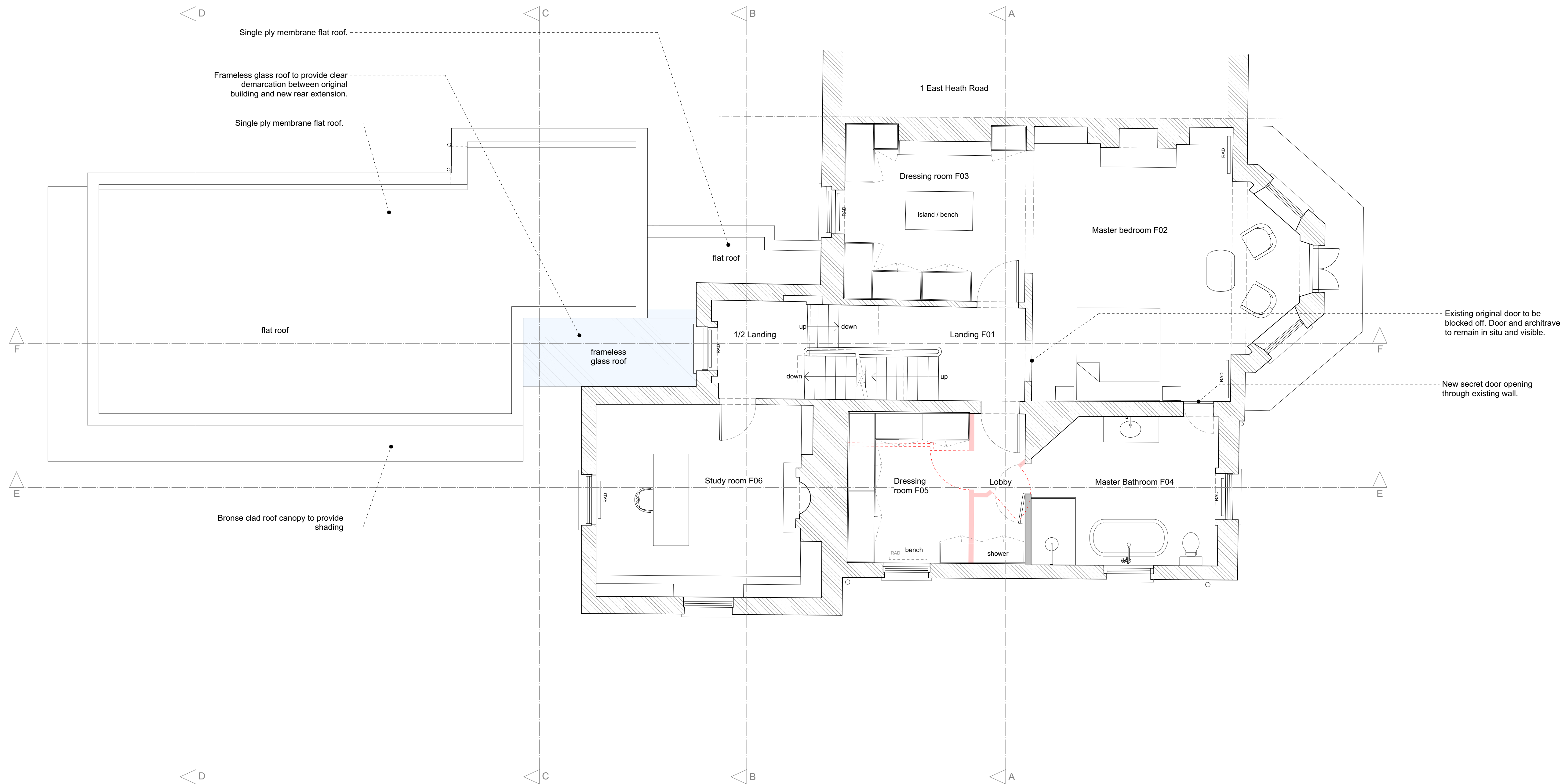
DO NOT SCALE OFF THIS DRAWING, only use stated dimensions for setting out purposes.

The copyright of this schedule / drawing remains with the Architect. No part of this schedule / drawing may be reproduced in any form or by any means without the written permission of Greenway Architects.

Project: South Lodge, Heathside, London NW3	
Drawing Title: As approved site plan	
Drawing No.: 1938 - 200	
Date 19/06/2017	Scale 1:200 @ A3 1:100 @ A1
greenwayarchitects Branch Hill Mews, London NW3 7LT Tel +44 (0)20 7435 6091 www.greenwayarchitects.co.uk	



No.	Revision.	Date.	<div><div><div><div></div><div></div></div><div><div>N</div><div><div><div>0</div><div>1</div><div>2.5m</div></div></div></div><div><div><div><div></div><div>Existing walls and structure</div></div><div><div></div><div>Proposed walls and structure</div></div><div><div></div><div>Existing walls and fixtures to be demolished or removed</div></div></div></div></div></div>	Project: South Lodge, Heathside, London NW3	
				Drawing Title: As approved ground floor	
				Drawing No.: 1938 - 201	
				Date 19/06/2017	Scale 1:100 @ A3 1:50 @ A1
			greenwayarchitects Branch Hill Mews, London NW3 7LT Tel +44 (0)20 7435 6091 www.greenwayarchitects.co.uk		



No.	Revision.	Date.

N

012.5m

Existing walls and structure

Proposed walls and structure

Existing walls and fixtures to be demolished or removed

PLANNING ISSUE

All dimensions must be confirmed on site and verified with the Architect. Any discrepancies on the drawing must be reported to the Architect prior to any works being carried out on site.

DO NOT SCALE OFF THIS DRAWING, only use stated dimensions for setting out purposes.

The copyright of this schedule / drawing remains with the Architect. No part of this schedule / drawing may be reproduced in any form or by any means without the written permission of Greenway Architects.

Project:

South Lodge, Heathside, London NW3

Drawing Title:

As approved first floor

Drawing No.:

1938 - 202

Date

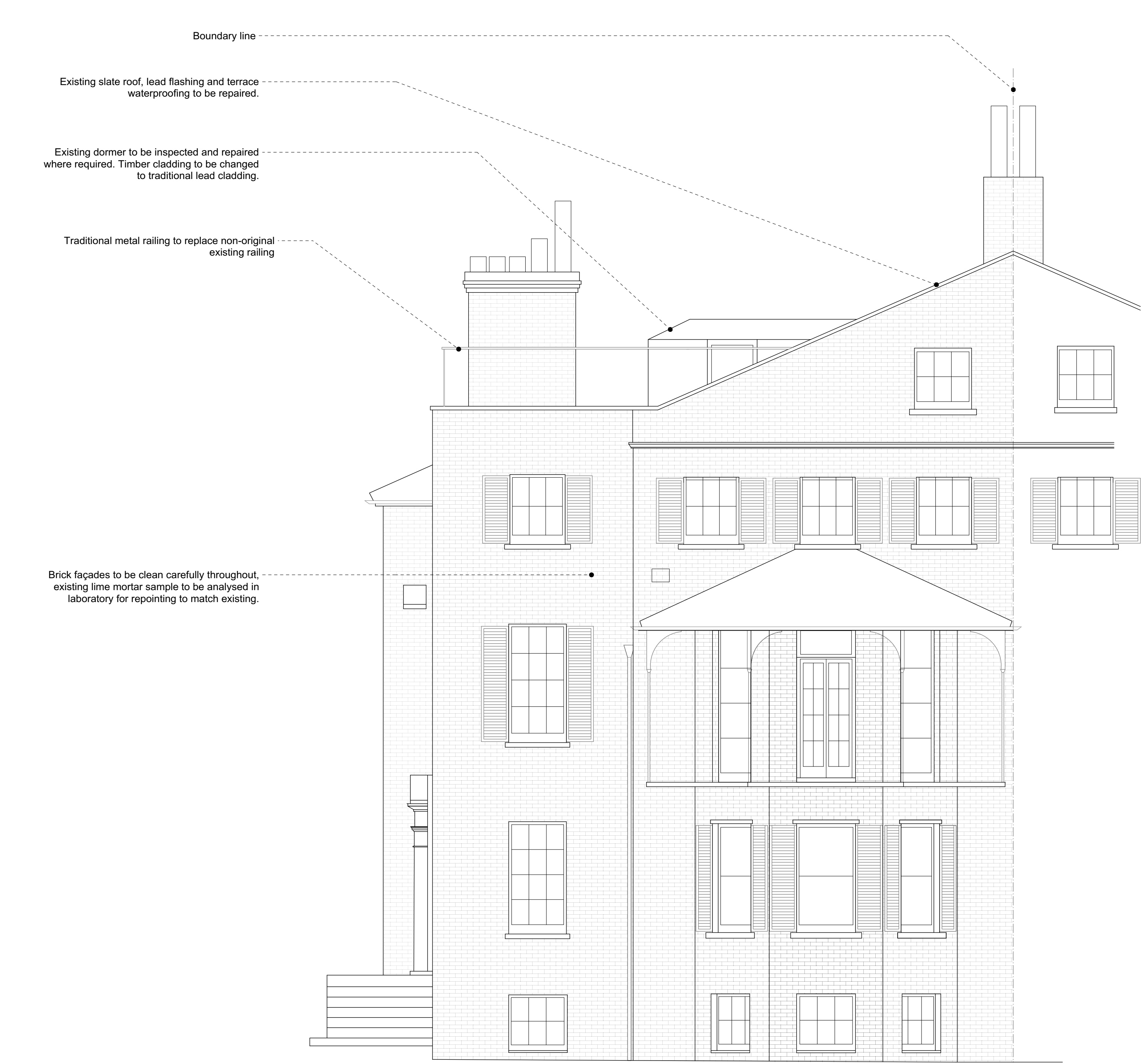
19/06/2017

Scale

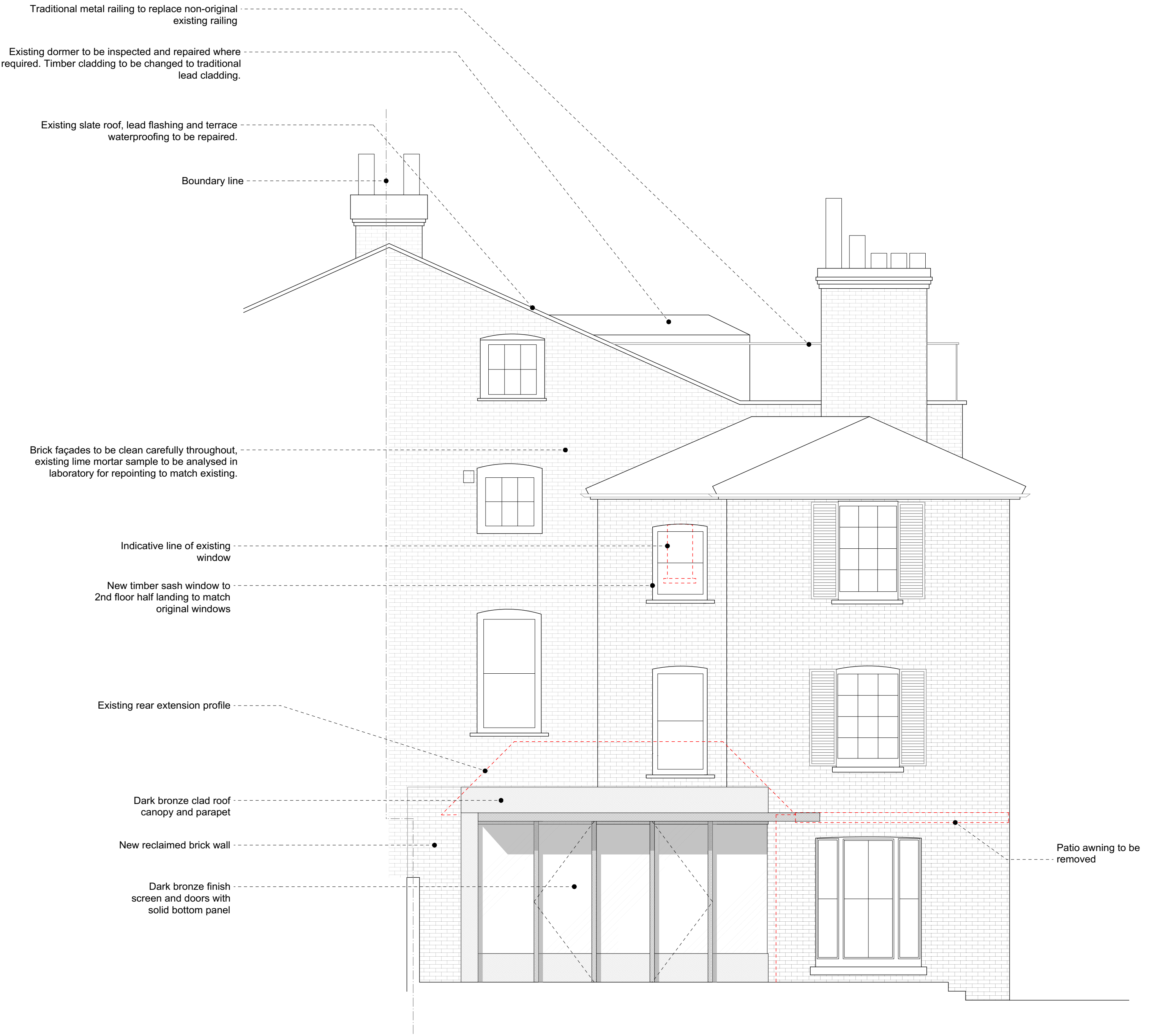
1:100 @ A3
1:50 @ A1

greenwayarchitects

Branch Hill Mews, London NW3 7LT
Tel +44 (0)20 7435 6091
www.greenwayarchitects.co.uk



01. S-E Elevation

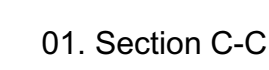


02. N-W Elevation

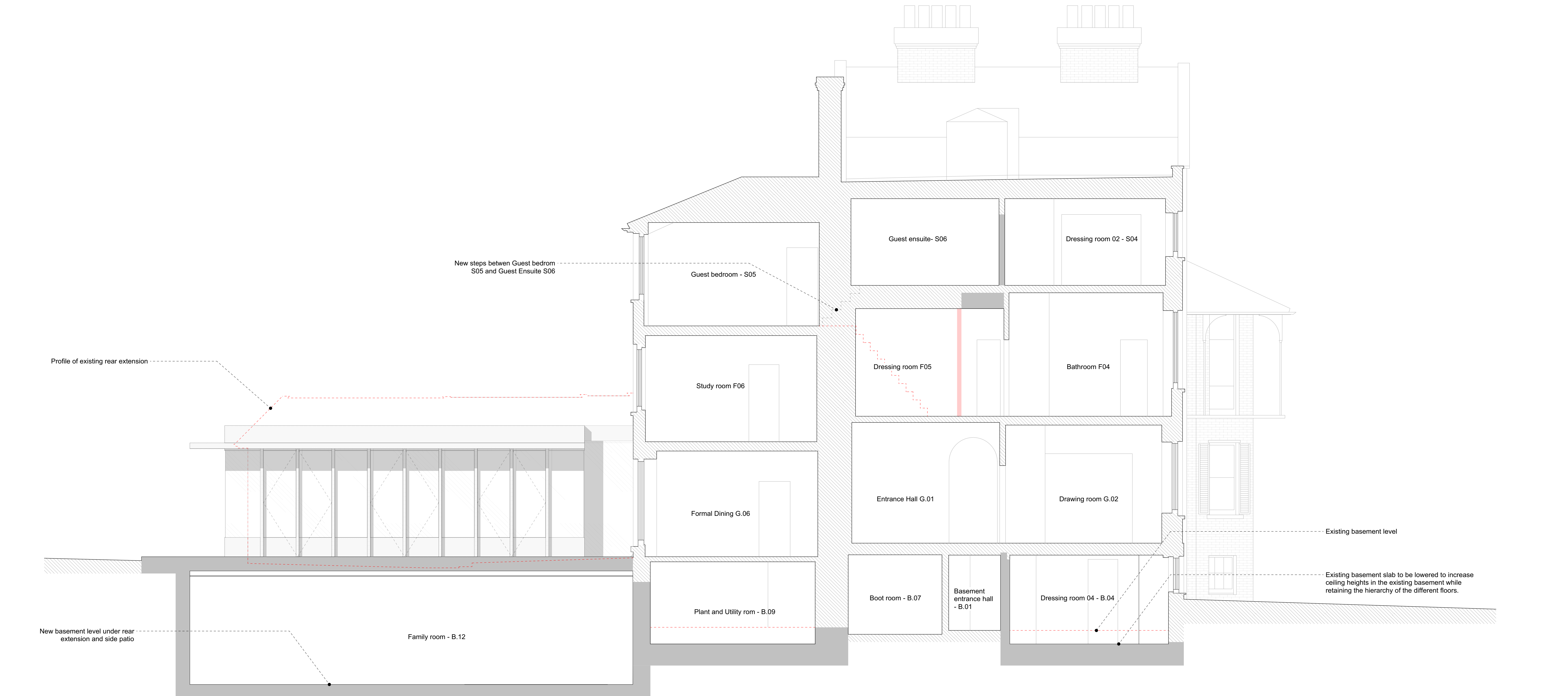
No.	Revision.	Date.	<div>01 2.5m</div>	<div>PLANNING ISSUE</div> <div>All dimensions must be confirmed on site and verified with the Architect. Any discrepancies on the drawing must be reported to the Architect prior to any works being carried out on site.</div> <div>DO NOT SCALE OFF THIS DRAWING, only use stated dimensions for setting out purposes.</div> <div>The copyright of this schedule / drawing remains with the Architect. No part of this schedule / drawing may be reproduced in any form or by any means without the written permission of Greenway Architects.</div>	Project: South Lodge, Heathside, London NW3	
					Drawing Title: As approved S-E & N-W elevations	
					Drawing No.: 1938 - 210	
					Date 19/06/2017	Scale 1:100 @ A3 1:50 @ A1
					greenwayarchitects Branch Hill Mews, London NW3 7LT Tel +44 (0)20 7435 6091 www.greenwayarchitects.co.uk	



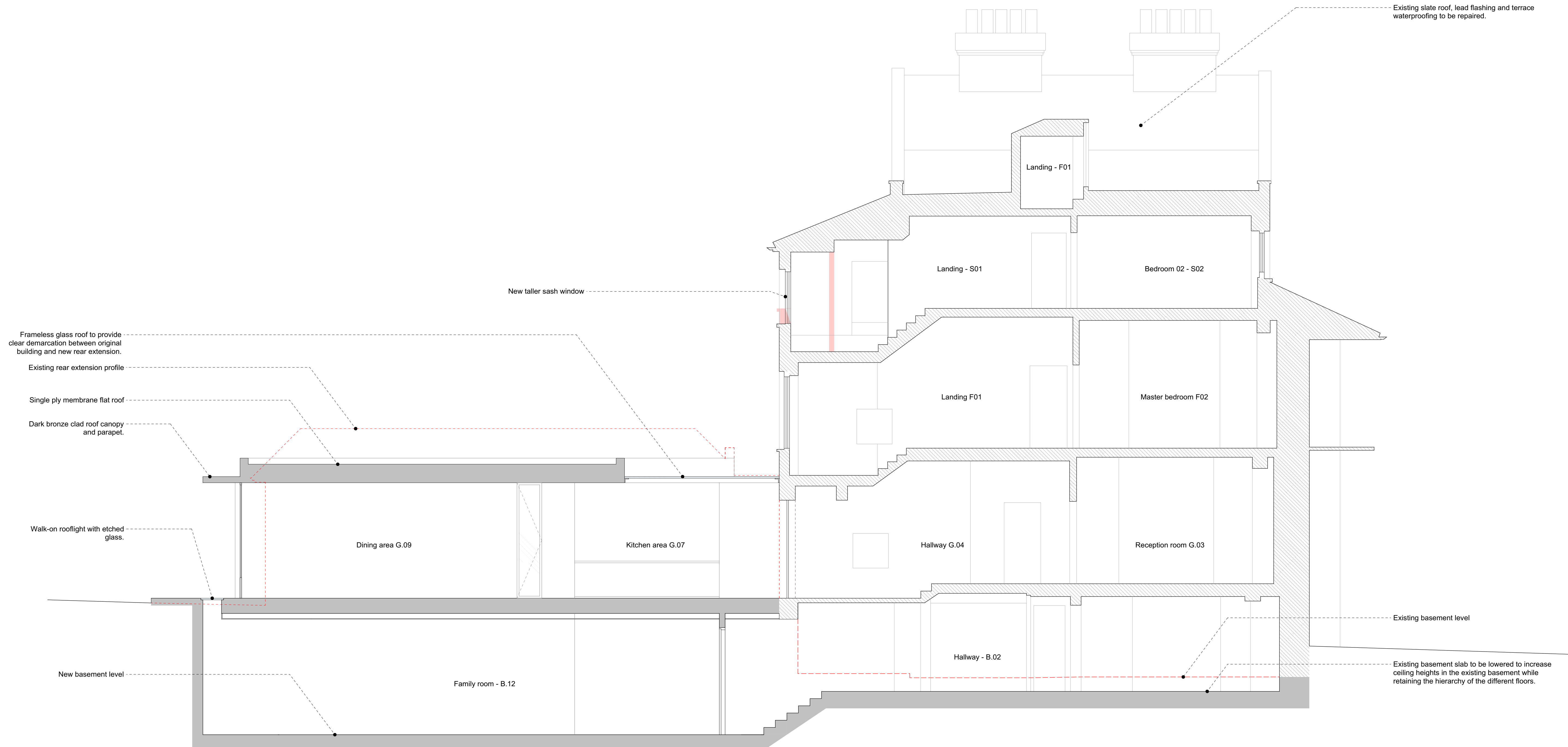
No.	Revision.	Date.	<div>012.5m</div>	<div>PLANNING ISSUE</div> <div>All dimensions must be confirmed on site and verified with the Architect. Any discrepancies on the drawing must be reported to the Architect prior to any works being carried out on site.</div> <div>DO NOT SCALE OFF THIS DRAWING, only use stated dimensions for setting out purposes.</div> <div>The copyright of this schedule / drawing remains with the Architect. No part of this schedule / drawing may be reproduced in any form or by any means without the written permission of Greenway Architects.</div>	Project: South Lodge, Heathside, London NW3	
					Drawing Title: As approved S-W elevation	
					Drawing No.: 1938 - 211	
					Date 19/06/2017	Scale 1:100 @ A3 1:50 @ A1
					greenwayarchitects Branch Hill Mews, London NW3 7LT Tel +44 (0)20 7435 6091 www.greenwayarchitects.co.uk	



No.	Revision.	Date.
<div><div><div><div><div></div><div>0</div></div><div><div></div><div>1</div></div><div><div></div><div>2.5m</div></div></div><div><div><div></div><div>Existing walls and structure</div></div><div><div></div><div>Proposed walls and structure</div></div><div><div></div><div>Existing walls and fixtures to be demolished or removed</div></div></div></div><div><div><div><div><div></div><div>PLANNING ISSUE</div></div><div><div>All dimensions must be confirmed on site and verified with the Architect. Any discrepancies on the drawing must be reported to the Architect prior to any works being carried out on site.</div><div>DO NOT SCALE OFF THIS DRAWING, only use stated dimensions for setting out purposes.</div><div>The copyright of this schedule / drawing remains with the Architect. No part of this schedule / drawing may be reproduced in any form or by any means without the written permission of Greenway Architects.</div></div><div><div><div>Project: South Lodge, Heathside, London NW3</div><div><div>Drawing Title: As approved sections C-C & D-D</div><div>Drawing No.: 1938 - 221</div><div><div>Date 19/06/2017</div><div>Scale 1:100 @ A3 1:50 @ A1</div></div><div><div>greenwayarchitects</div><div>Branch Hill Mews, London NW3 7LT Tel +44 (0)20 7435 6091 www.greenwayarchitects.co.uk</div></div></div></div></div></div></div></div></div>		



No.		Revision.	Date.	<div>012.5m</div> <div><div></div>Existing walls and structure</div> <div><div></div>Proposed walls and structure</div> <div><div></div>Existing walls and fixtures to be demolished or removed</div>
-----	--	-----------	-------	---



No.	Revision.	Date.	<div>012.5m</div> <div><div></div>Existing walls and structure</div> <div><div></div>Proposed walls and structure</div> <div><div></div>Existing walls and fixtures to be demolished or removed</div>
-----	-----------	-------	---