



INK BESPOKE



CONWAY MEWS GATE
DESIGN, ACCESS AND STATEMENT

Proposals for Gates to Conway Mews

Design and Access Statement

Conway Mews is accessed from Conway Street through a roadway underneath the upper floors of the Lurkin Pub, no. 4 Conway Mews. The road gives access to County House and parking associated with this property. County House houses First Intuition which is a business college and flats above.

The proposal is for new gates to this parking area and building only to be used after dark to give better security to the vehicles and residents of this area. The gates will be set to close on a timer at a time agreed with First Intuition and residents, it will be fail safe open in the event of a power failure and have emergency access for Emergency services.

A new intercom is to be installed for the flats so that access is maintained when the Gates are closed and access to the main gates will be via keycode access which all stakeholders will have access to.

In recent months this area is regularly frequented by homeless people and unfortunately there have been a number of instances of anti-social behaviour and crime has become an issue in the Mews.

The proposed design of the gates will be similar to the gates on the opposite side of Conway Street to Bromley place. They will be less obvious as they will be set back from the street to the rear elevation of the pub above. The application is similar to an application approved in 2013 for Gates to be installed at 2 Conway Mews 2013/4033/P which has since lapsed.

This application has been discussed with all the stakeholders of the area under discussion and it is generally welcomed by all as a means to improve the safety for all.



Photo of the Bromley Place Gates on the opposite side of Conway Street



Photo of the Lurkin Pub Entrance to Conway Mews

Proposals for Gates to Conway Mews

Design and Access Statement - Photographs



Photo of Conway Mews Road taken from inside the Mews



Photo of Stores to the rear of the Lurkin Pub



Photo of Conway Mews Road taken from inside the Mews



Photo of the Lurkin Pub Entrance to Conway Mews



Photo of the Lurkin Pub Entrance to Conway Mews

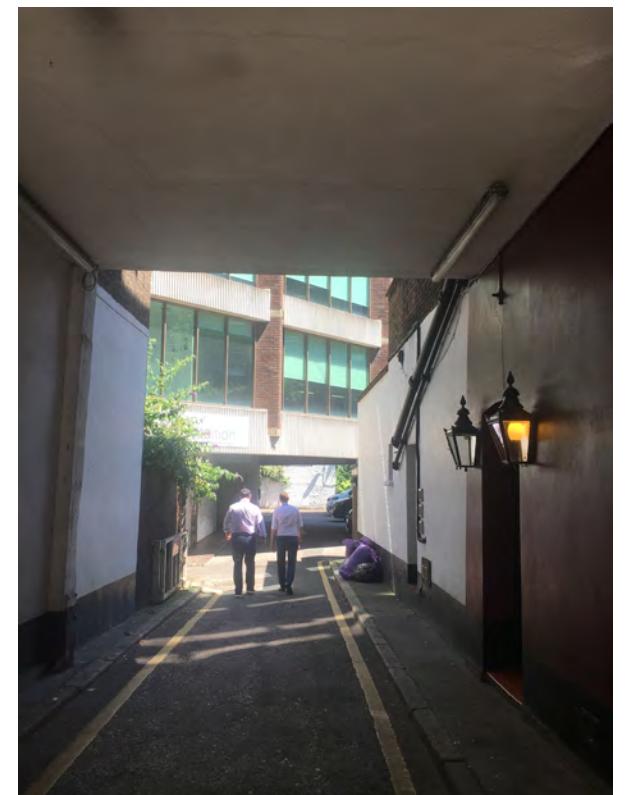


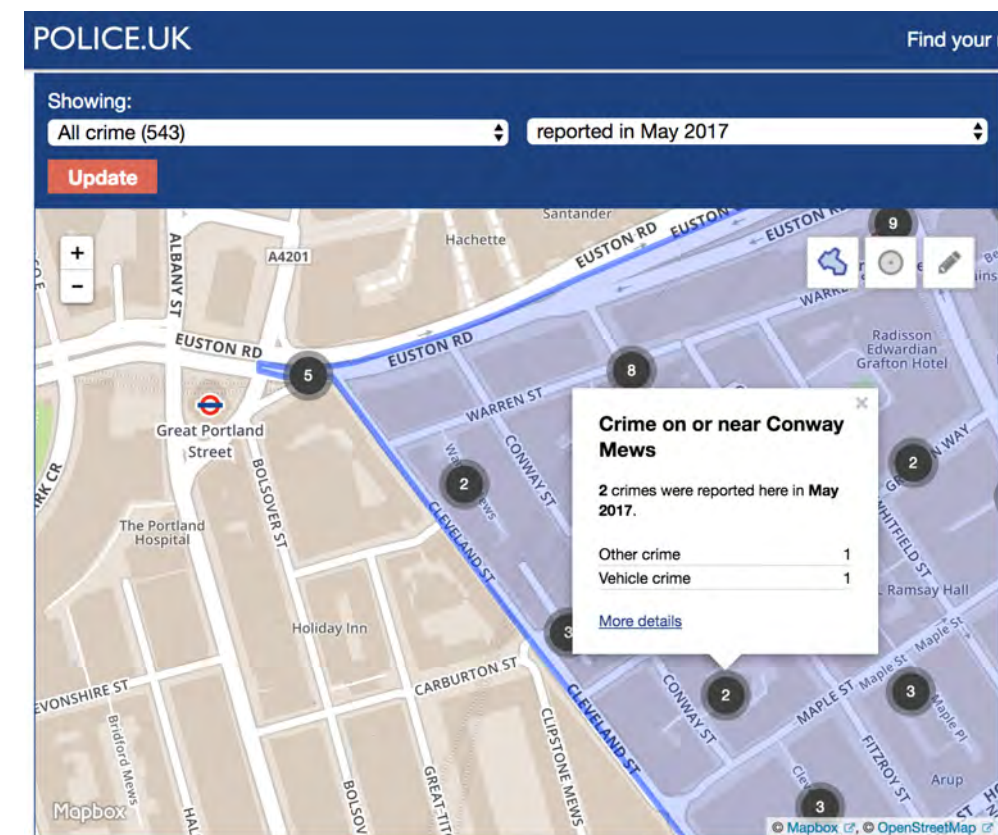
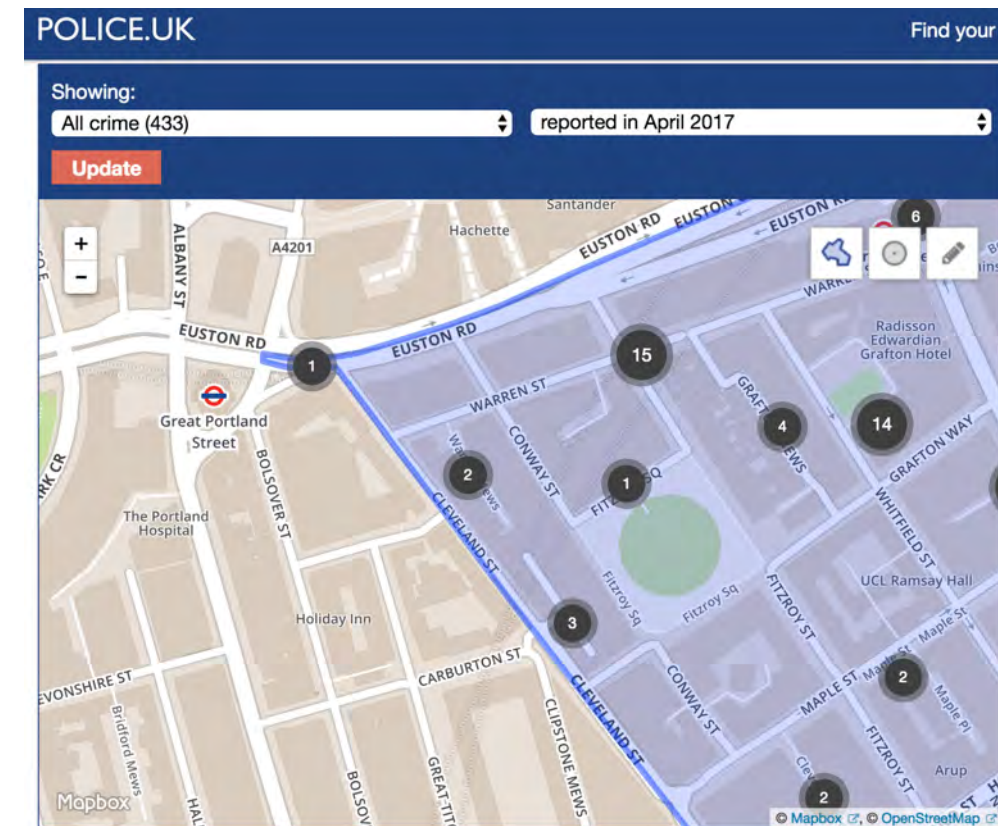
Photo of the mews entrance road, under the Lurkin Pub

Crime Rates

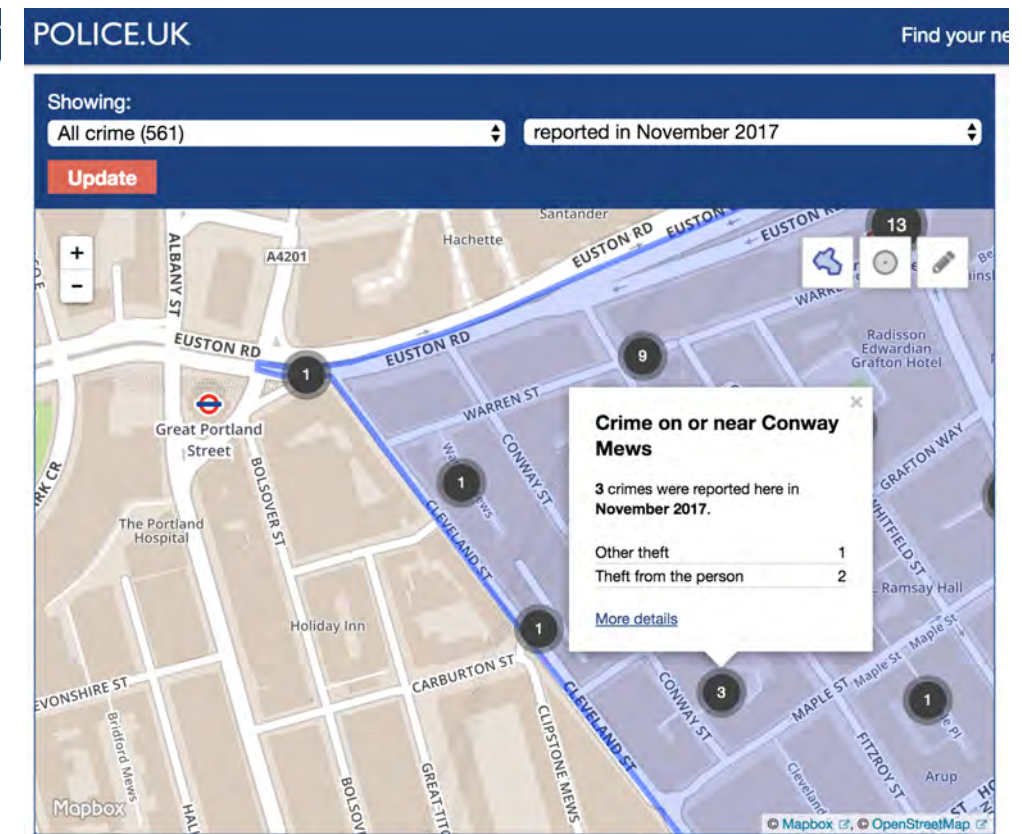
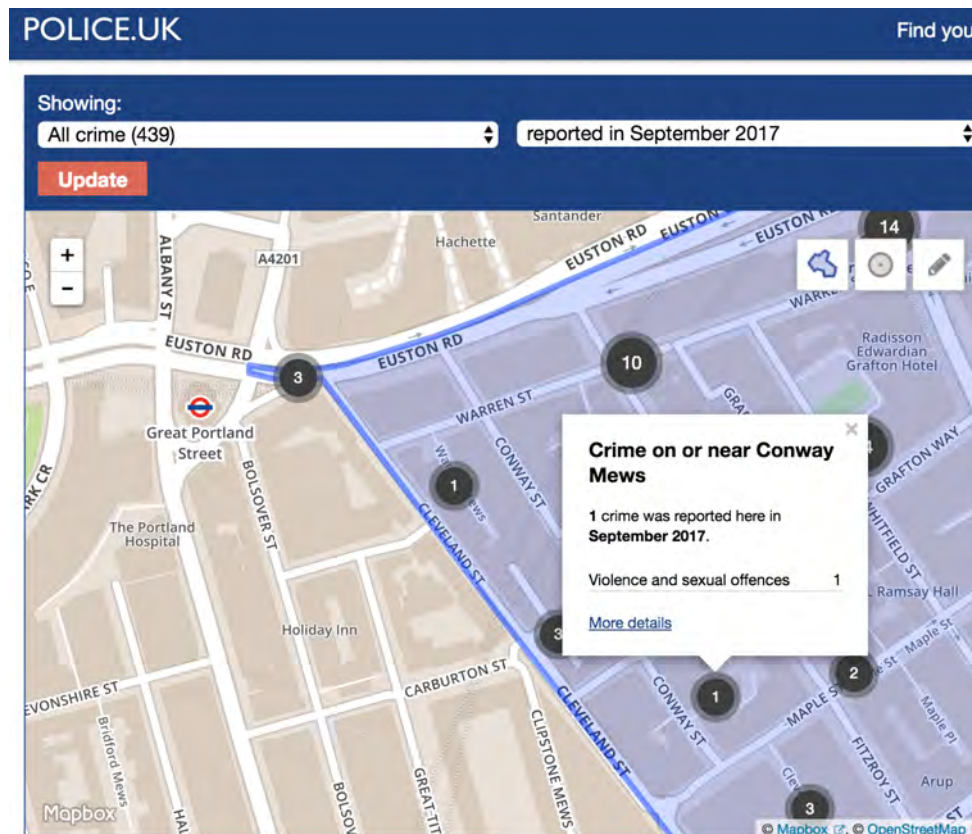
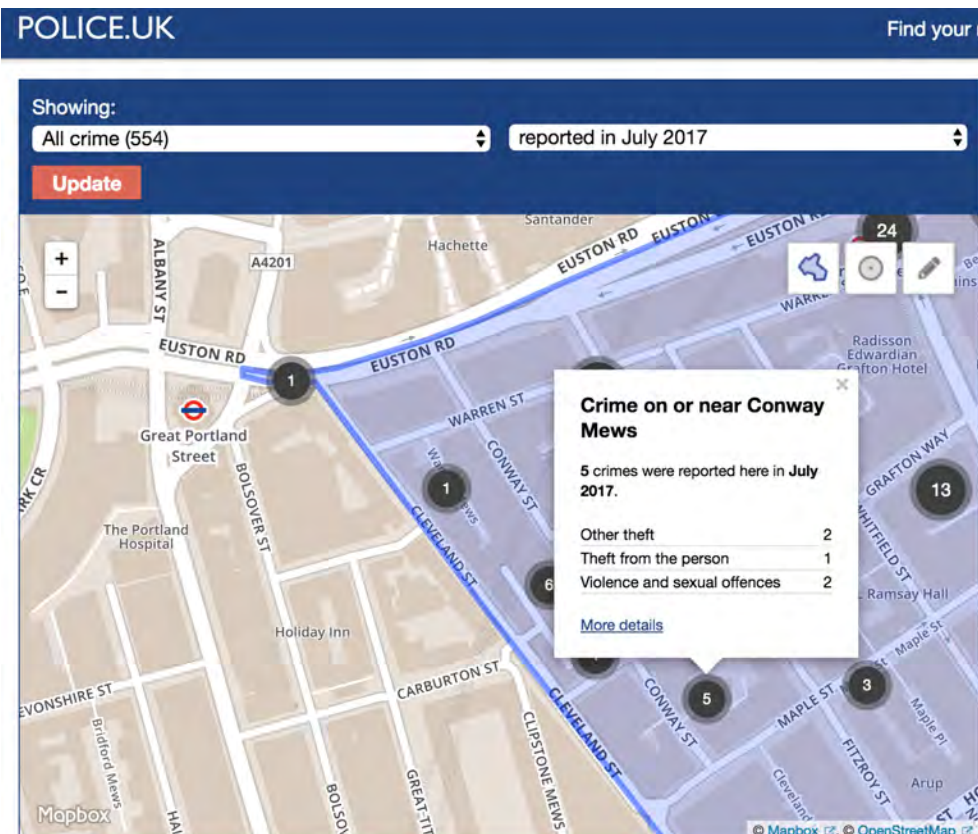
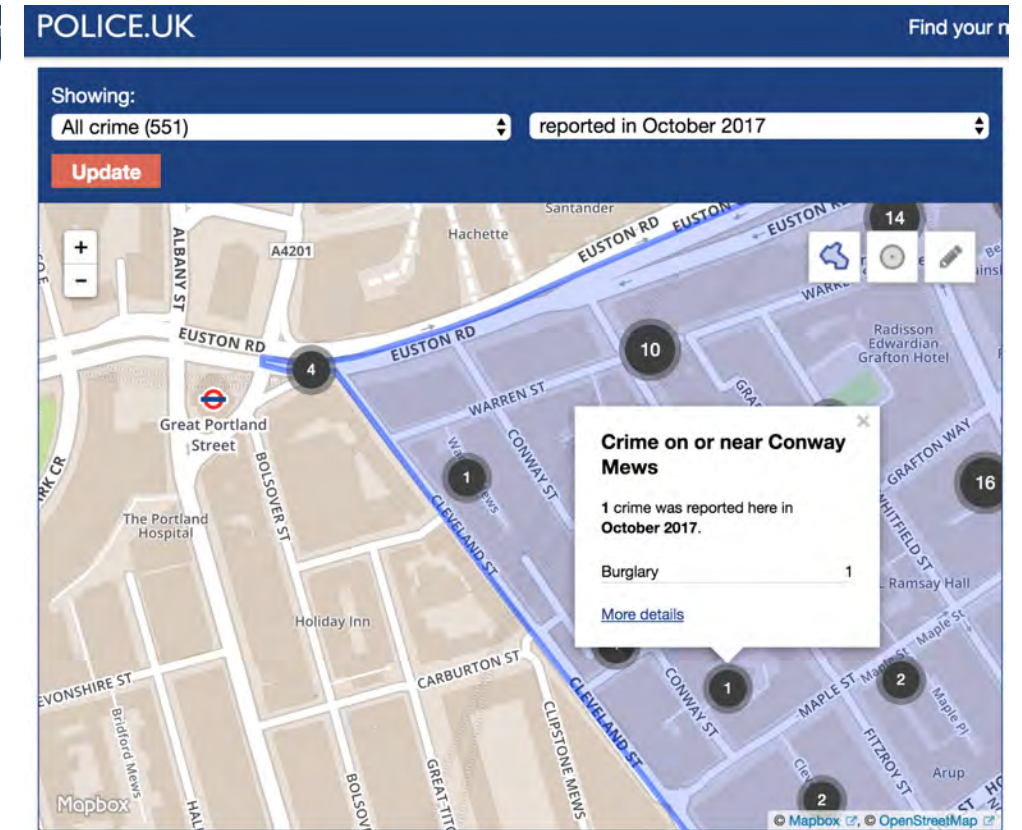
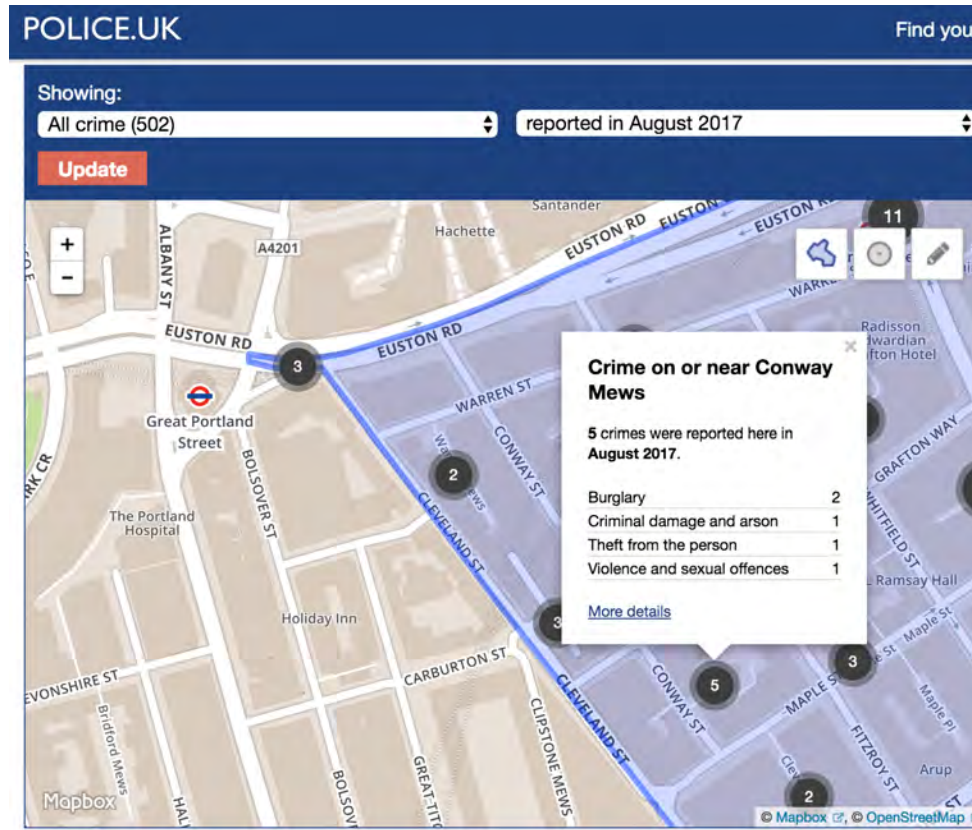
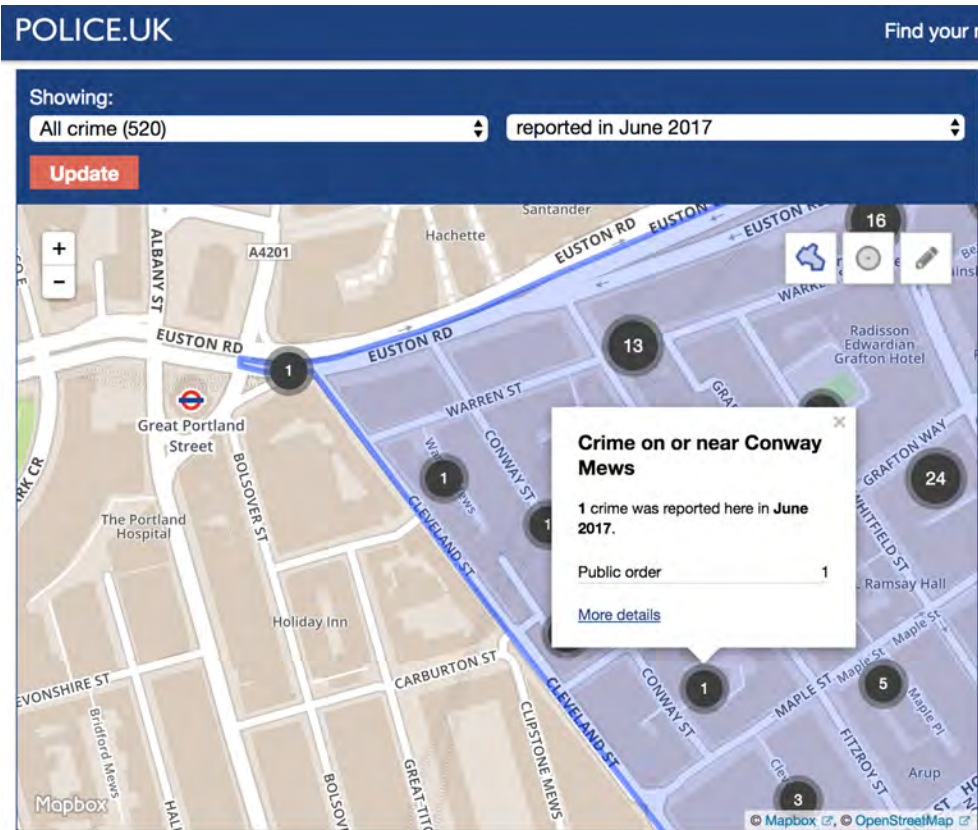
Design and Access Statement

The following pages show the crime rate statistics for the mews for the previous 18 month period. These have been collated from the following website:- <https://www.police.uk/metropolitan/E05000129/crime/>

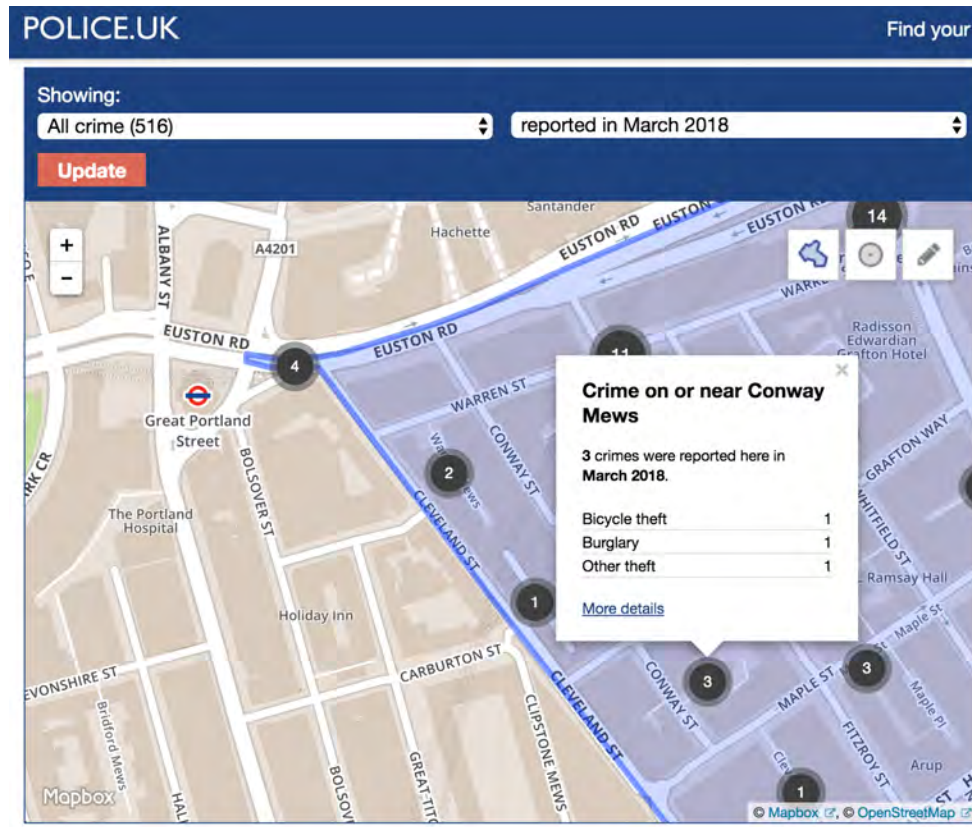
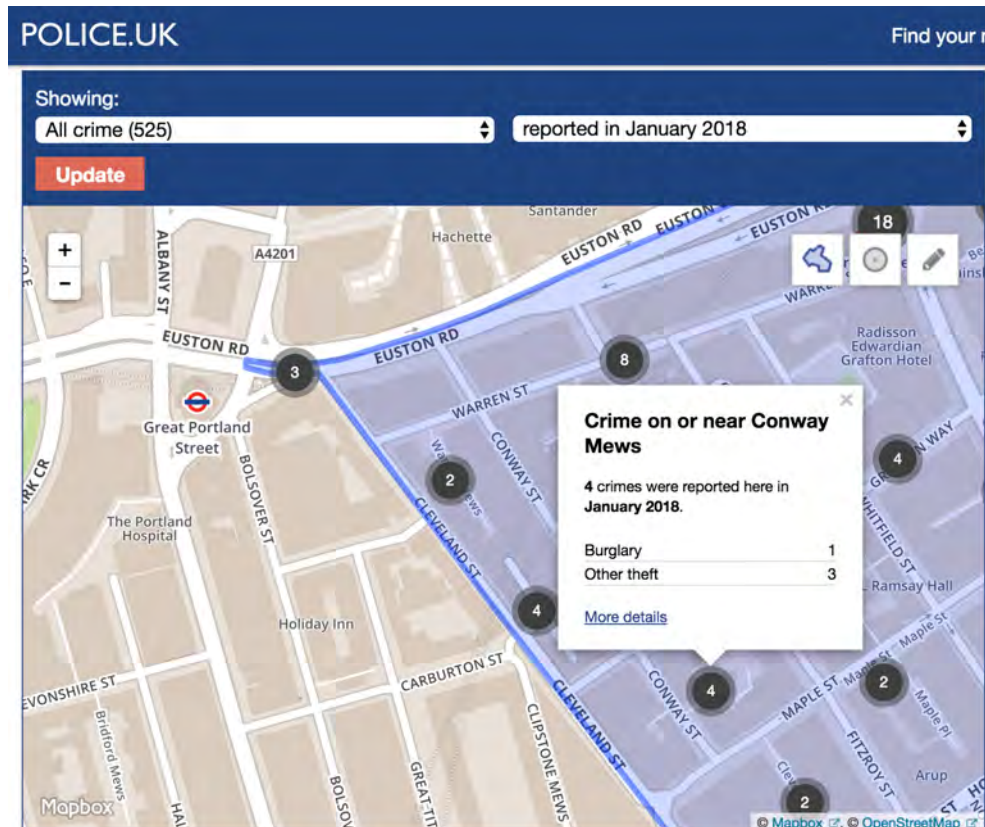
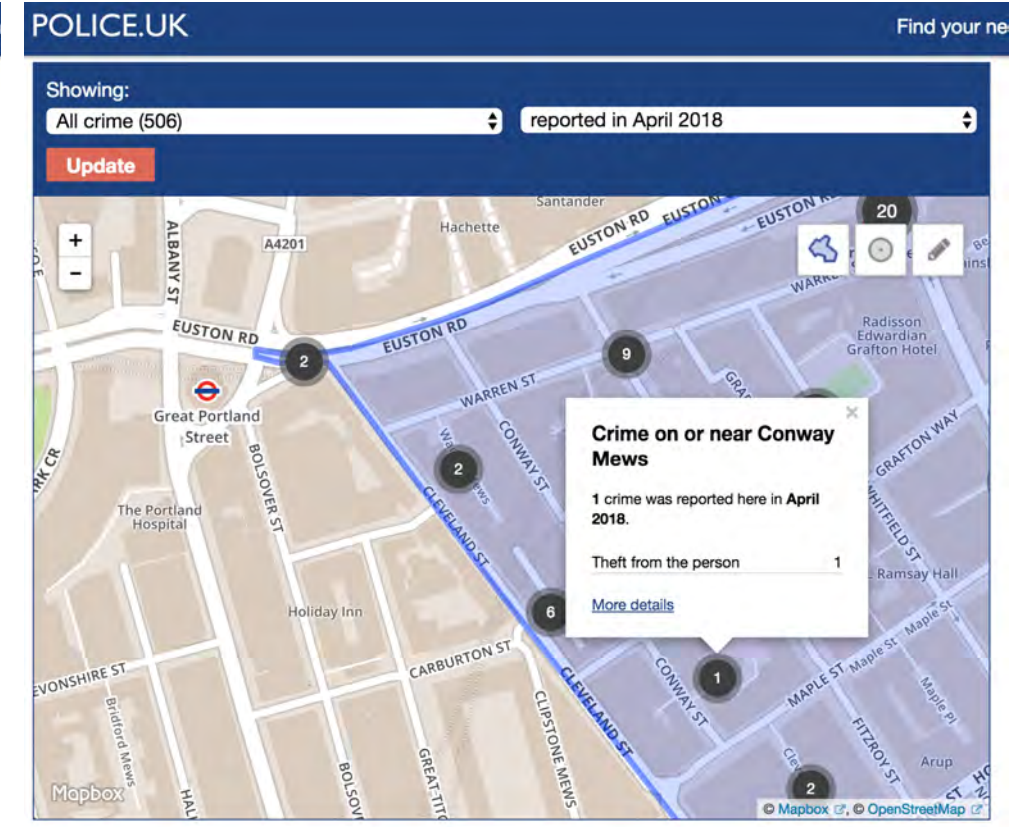
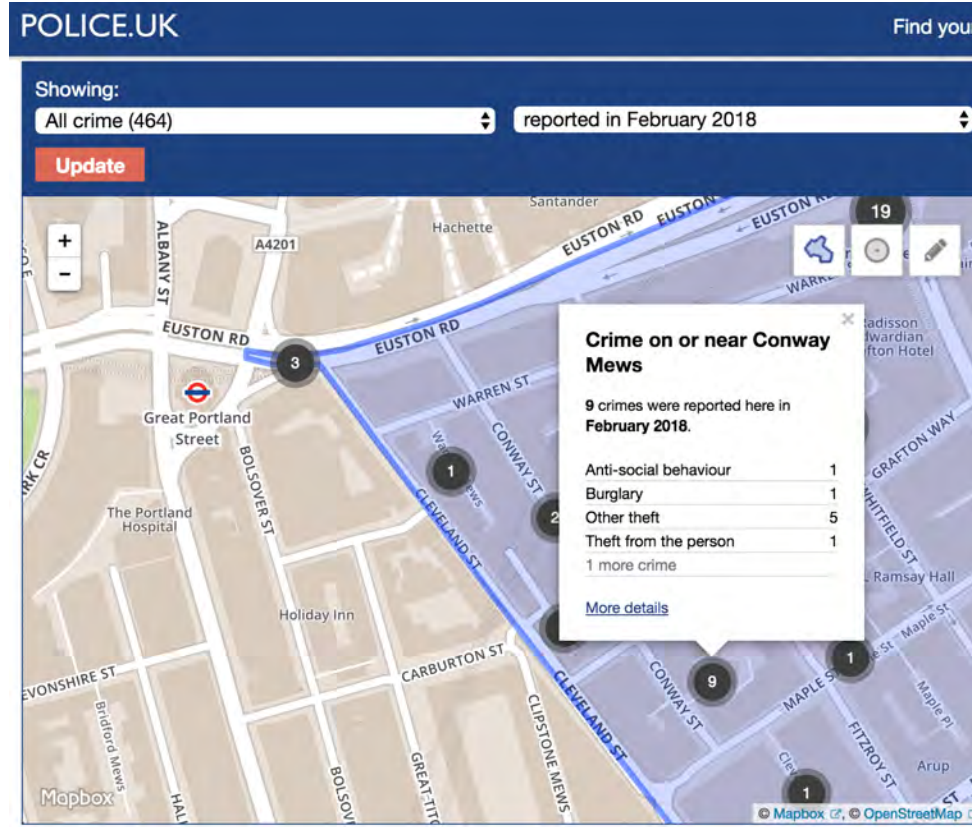
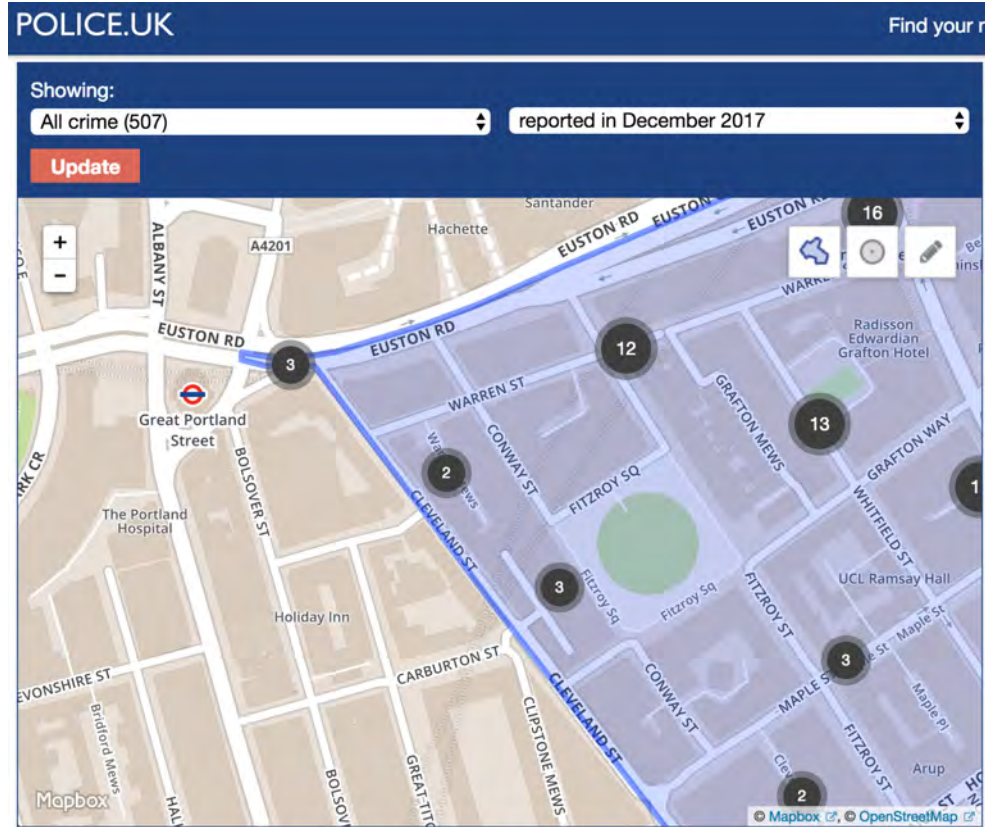
In summary there have been 49 crimes reported in the mews in the past 2 years. For further information please review the data and follow the weblink above.



CONWAY MEWS GATE - DESIGN - ACCESS - STATEMENT



CONWAY MEWS GATE - DESIGN - ACCESS - STATEMENT



CONWAY MEWS GATE - DESIGN - ACCESS - STATEMENT

